

FOR REFERENCE  
PURPOSES ONLY

# Welcome



Invitation for Bids (IFB)  
Tree Removal Services for the Camp Fire in Butte County  
DRR19067

Required Pre-Bid Meeting for DRR19067

# Agenda

- Operations Overview
- Tree Information
- Scope of Work
- Maps
- Wood Processing Yards
- End Use Facilities
- Forrest Practice Rules

# Operations Overview



- Core Values
  1. Integrity
  2. Respect
  3. Service
  4. Resiliency
  5. Leadership
- All our actions in the workplace and the community should be consistent with these values

# Operations Overview <sup>2</sup>



- FIRE DISASTER RECOVERY MISSION
- FEMA FUNDED PROJECT
- CALOES MISSION TASKS
- CALRECYCLE MANAGED CONTRACTS
- ICS (STRUCTURED ORG CHART, CHAIN OF COMMAND)
- STRINGENT DOCUMENTATION REQUIREMENTS
- STRICT ENVIRONMENTAL PROTECTION REQUIREMENTS

# Operations Overview <sup>3</sup>



- SAFETY
- ICS
- FINANCE SECTION
- PLANNING SECTION
- OPERATIONS SECTION
- USACE AND TECHNICAL MONITORS
- ENVIRONMENTAL

# Operations Overview



## ICS structure requirements

This project is being run under the FEMA Incident Command System(ICS)  
Incident management Team (IMT) consists of:

- Incident Commander (IC)
- Operations Section Chief (OSC)
- Planning Section Chief (PSC)
- Finance Section Chief (FSC) Contract Manager

Chain of Command (COC) ladder of escalation

Operations:

OSC, Deputy OSC

Branch Director

Division Supervisor

Task Force Leader (TFL)

# Operations Overview



## **Environmental sensitivities (not same permits as debris)**

Debris cleanup was run as an Emergency Response mission

Certain concessions and waivers were granted in debris since it was an emergency.

Trees are a Recovery mission

Not the same waivers as debris removal

Environmental remediation guidance information is in Environmental Protection Plan (EPP) and Environmental Compliance Plan (ECP) Links on website



# Operations Overview



## Function of Consultants

### Assessment and Monitoring Consultant

- Assessing and marking trees to cut
- Monitoring cutting crews for multiple issues:
  - Safety
  - Environmental Compliance
  - Proper cutting of trees
  - Proper disposal of trees
  - Recording cradle to grave tree ID

### Finance and Administration Consultant

- Payments for contracts

# Operations Overview



## **Army Corp/FEMA additional oversight**

FEMA has Tasked Army Corp of Engineers (ACE) to oversee the operations

ACE will quality control check about 15-20% of trees

Checking for all the issues that Task Force Leader (TFL) will be checking

# Tree Information



## FEMA Eligible of trees

- “Immediate threat to lives, public health and safety, or improved property”
- Diameter of six inches or greater at four and one-half feet above ground level; and one or more of the following criteria is true
- More than 50% of its crown damaged or destroyed, or it is a split trunk, broken branches or exposed heartwood, or it is leaning at an angle greater than 30 degrees

# Tree Information <sup>2</sup>



Estimated total of 300,000 trees

- “Camp Fire – CalFire Tree Inventory Sampling”, October 18, 2019 (Refer to the link on website)
- Potential of 17,000 properties and
- Right of Way for Butte County & Town of Paradise
- FEMA approved Private Rights of Way

# Tree Information



## State Hazard Tree Removal Program

- Right of Entry (ROE) to sign up
- ~5,600 ROE's as of May 25, 2020
- 50% / 50% split ROE vs. Private
- CalRecycle does not guarantee the ultimate number of ROE forms
- 11,400 trees on Public ROW in the Town of Paradise and Butte County

# Tree Information 4 3



## Tree Locations

- ROW Hazard Trees on Town and County Rights of Way  
Assessment done by Butte Co & Town. Diff. Criteria
- ROE Trees a.k.a. Private Property Debris Removal (PPDR) on Private Properties
- **ROE/PPDR and ROW Trees** are to be felled, processed, transported and **tracked separately**

# Tree Information

## Multi-Stem Trees



# Tree Information

## Tree Markings (Town of Paradise)





# Tree Markings (Butte County)



# Scope of Work



- Contractor shall perform all hazard tree felling, processing, and transport to end use facilities and provide all supporting services, as required by this IFB.
- Contractors shall be Licensed Timber Operator and will be responsible for reviewing, signing and implementing Timber Harvest Plans.

# Scope of Work



Two Contractors (Licensed Timber Operators – LTOs)  
Paid with the following Bid Items

- Mobilization/Demobilization
- Non-Working Days
- Delays
- Tree Removal – 6-inches diameter or larger at 4.5 feet above ground, Unit Rate per tree:
  - 1-35,000 trees
  - 35,001 – 70,000 trees
  - more than 70,001 trees
- **\$10k + costs and penalties for unauthorized tree removal**

# Scope of Work



## Hazard Tree Removal Crews

- The crew can work together as a single unit. Cutting, hauling, and cleanup
- Or split unit of cutting unit and Haul/cleanup unit
- Either way it will be classified as a single unit of Task Force. See definition in the IFB

# Scope of Work

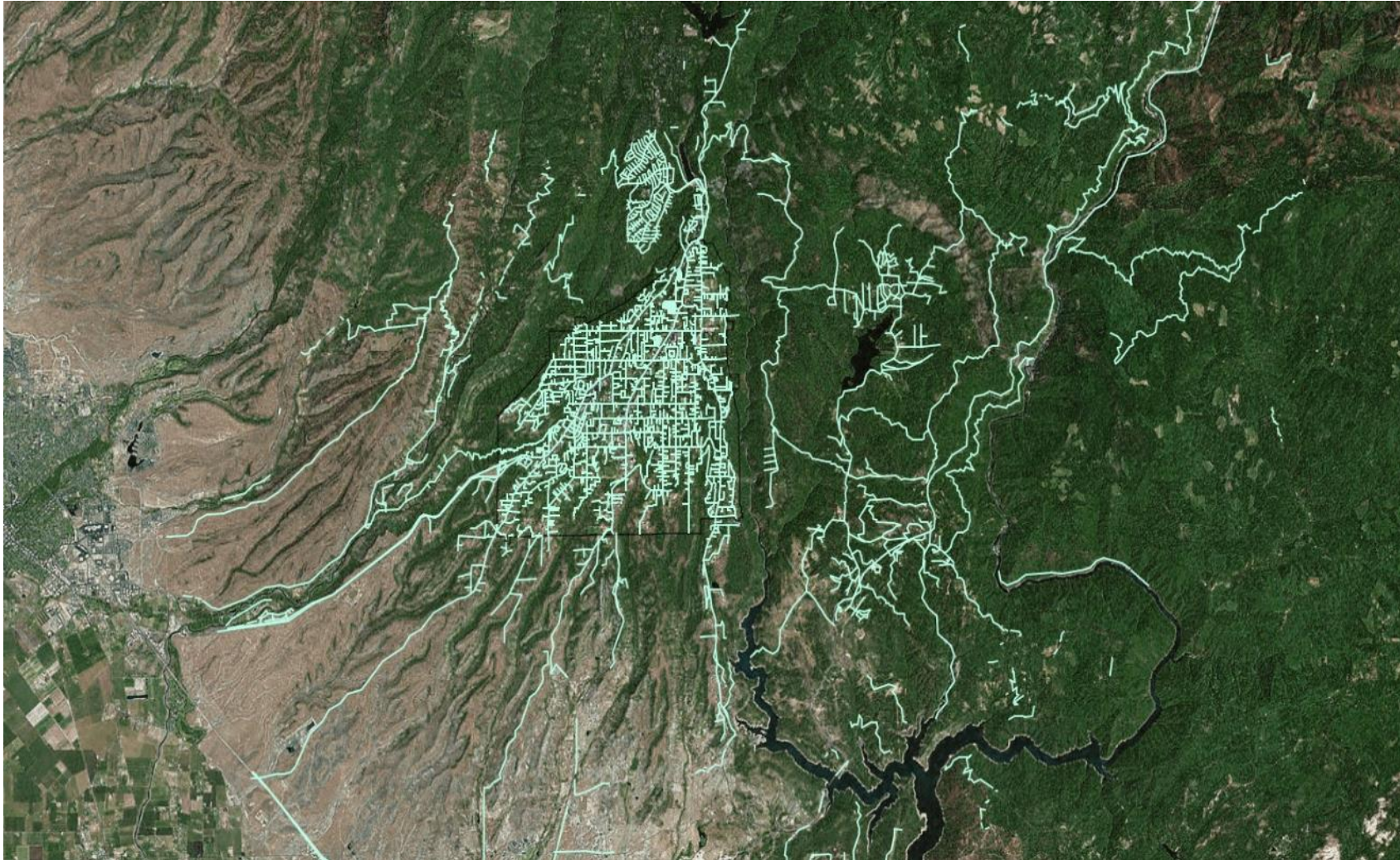


## Crew Deployment, for each contractor

- Ten (10) Hazard Tree Removal Crews, w/in 5 days after NTP
- As many as 10 additional, total of up to twenty (20) Hazard Tree Removal Crews, w/in *20 days* after NTP
- As many as 10 additional, total of up to thirty (30) Hazard Tree Removal Crews w/in *35 days* after NTP
- As many as 10 additional, total of up to forty (40) Hazard Tree Removal Crews w/in *50 days* after NTP
- As many as 10 additional, total of up to fifty (50) Hazard Tree Removal Crews w/in *65 days* after NTP

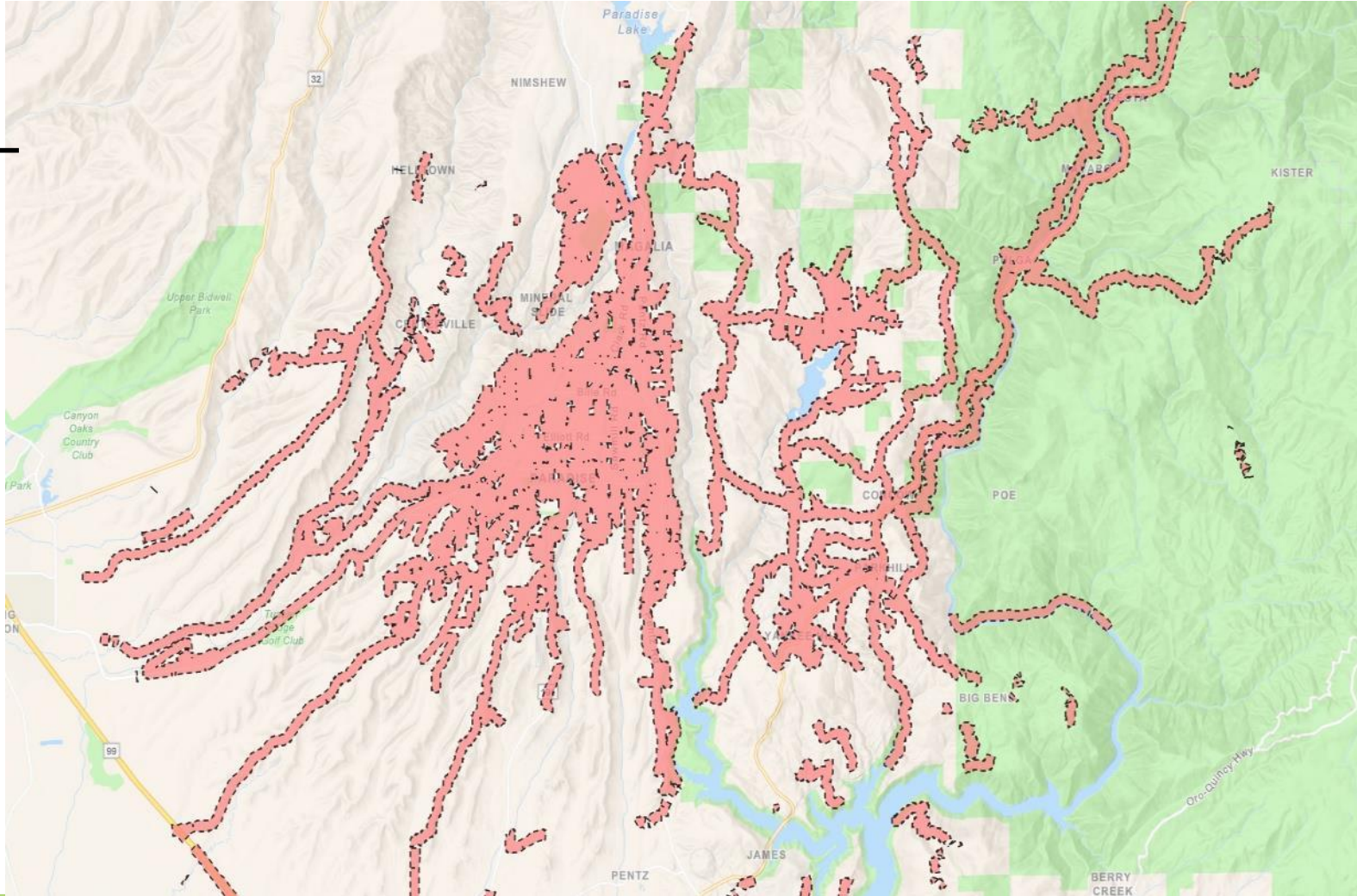
# Maps

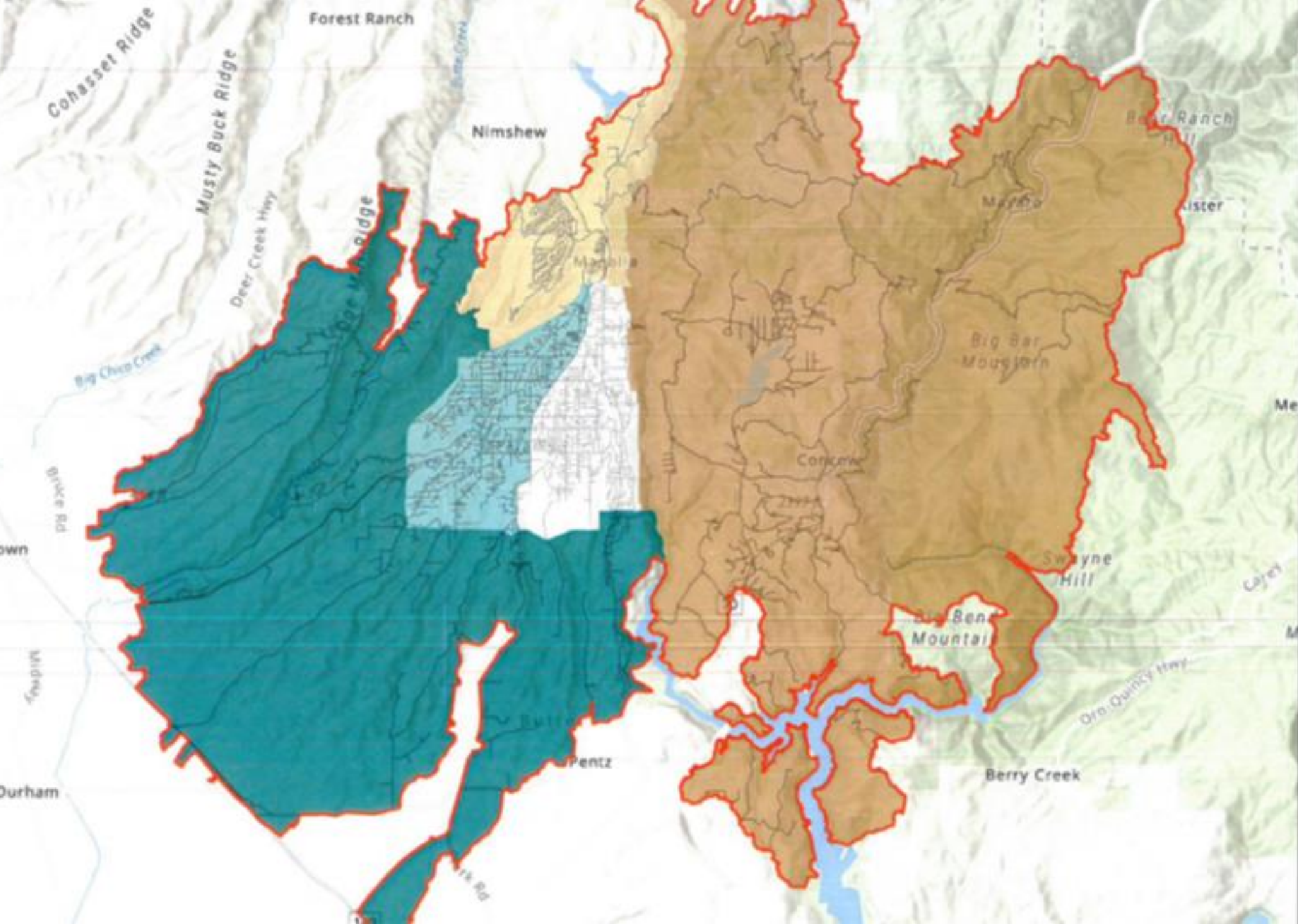
FEMA  
ELIGIBLE  
ROADWAYS



# Maps <sup>2</sup>

## OPERATIONAL AREA MAP





**Date Layer / Map Description:**  
 This map provides an overview of the Camp Fire perimeter and proposed branches for Tree Removal Operations.

Declared 11/12/2018

- Camp Fire Perimeter
- Road
- Branch Location**
- East Camp Fire (Concow)
- North Central (Magalia)
- East Paradise
- West Paradise
- West Camp Fire





# Wood Processing Yards



## Log Storage and Processing Sites

- All Log Decks to be located in Butte County and the City of Oroville
- **NONE in the Town of Paradise for the State program**
- Town & County sites listed in the IFB. Permits required
- Contractors required to obtain:
  - Use Permits
  - Environmental Review
  - Land Lease with owner(s)
- Information in the IFB

# Wood Processing Yards



## Log Storage and Processing Sites Town East/West Paradise

- Tuscan Ridge (Skyway)
- Diamler Rock (Clark Road)
- Dwight Property near Kunkle Reservoir (Off Pentz)
- Odin Recycling Facility – Oroville
- Skyway Crossroad Property (Walmart)

# Wood Processing Yards



## Log Storage and Processing Sites Butte County

- Lakeridge Road Properties (to serve Magalia)
- Concow Road (Wendell McFarland Property)
- RCI Property – Oroville
- Recology - Oroville
- Ophir Road Property - Oroville
- Skyway/Honey Run

# End Use Facilities



## Approved Biomass 75%

- Honey Lake Power (Greenleaf Power), Susanville
- Wheelabrator, Anderson
- Sierra Valley Enterprises, LLC , Loyalton(Formerly ARP Loyalton)
  
- **Commitment Letters from End Use Facilities are required in the Bid Package**

# End Use Facilities



## Approved other 25%

- Apex Lumber, Oroville
- Sierra Pacific Industries, Lincoln
- Old Durham Wood, Durham
- Ostrom Road Landfill –Recology Landfill, Wheatland

# Additional Information



- Multiple companies removing trees at same time
- Utilities (water, PGE, underground) work same time
- Traffic plan prepared by Caltrans and (LINK PROVIDED on website)
- Contractor prepare Safety plans for their crews
- Safety Plan, COVID 19, PG&E safety presented at onboarding trainings by the IMT
- Archaeological/Historical/Tribal Monitors
- Contractors are required to submit safety plans, COVID 19 safety plans

# Forest Practice Rules



## CALIFORNIA FOREST PRACTICE RULES 2020

*Title 14, California Code of Regulations  
Chapters 4, 4.5 and 10*

with the  
Z'BERG-NEJEDLY FOREST PRACTICE ACT;  
Pertinent Excerpts from  
PROTECTION OF FOREST, RANGE AND FORAGE LANDS -  
PROHIBITED ACTIVITIES  
and the  
WILD AND SCENIC RIVERS ACT;  
the  
PROFESSIONAL FORESTERS LAW and REGISTRATION OF PROFESSIONAL  
FORESTERS RULES,  
and with information related to  
FOREST ROADBED MATERIALS

Prepared for:  
California Licensed Timber Operators  
and California Registered Professional Foresters

Compiled by:  
The California Department of Forestry and Fire Protection  
Resource Management, Forest Practice Program  
P.O. Box 944246  
Sacramento, CA 94244-2460

See Also, CAL FIRE's Web Site's Home Page, at [www.fire.ca.gov](http://www.fire.ca.gov)

Gavin Newsom  
Governor  
State of California

Wade Crowfoot  
Secretary for Natural Resources  
Natural Resources Agency

Thom Porter  
Director  
California Department of Forestry  
and Fire Protection

2020 Version  
First Printing

# Questions Now

- Address those that we can now.