

Department of Resources Recycling and Recovery

Invitation for Bid (IFB) DRR21049

2021 Fires: Structural Debris Removal & Hazard Tree Removal Services

Mandatory Pre-Bid Meeting

September 14, 2021

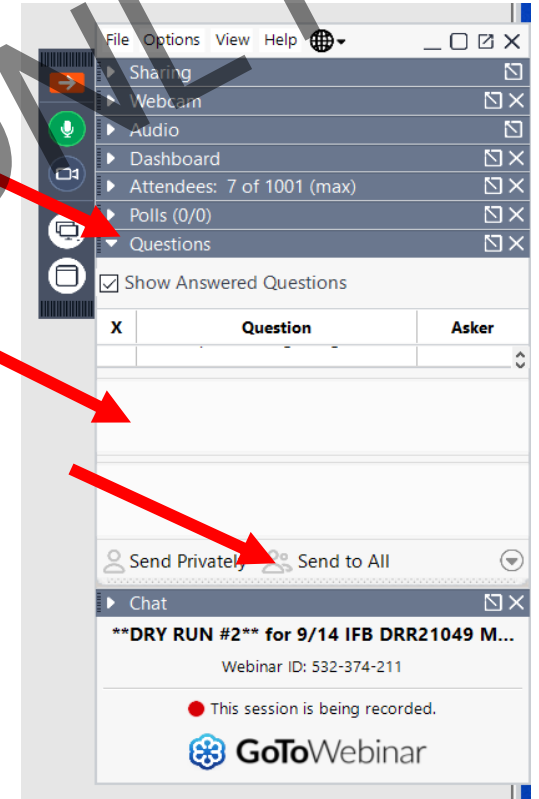
10:00 A.M. to 11:30 A.M.

Agenda

- Welcome
- Bidding Timeline Overview
- Operations Overview
- Contract Overview
- Questions

Questions

- Questions regarding required bid documents and timelines will be answered during this meeting. You may submit your questions via the GoToWebinar side panel.
- Answers given here today are non-binding on CalRecycle.
- To receive a written answer to questions regarding operations and contracts or other items, submit your questions to Contracts@CalRecycle.ca.gov by September 17, 2021, by 5:00 PM.
- All questions will be answered in an Addendum to the IFB which will be posted on CalRecycle's website at <https://www.calrecycle.ca.gov/Contracts>
- Once published, written answers will be binding on CalRecycle



Solicitation Timeline

SCHEDULE	DATE
Advertisement Date	September 10, 2021
Mandatory Pre-Bid Meeting	September 14, 2021
Written Questions Due by 5:00 P.M.	September 17, 2021
Submittals Due by 2:00 P.M.	October 1, 2021
Bid Opening at 10:00 A.M.	October 12, 2021

SERVICES NEEDED: CalRecycle has been tasked by the California Governor's Office of Emergency Services (Cal OES) to manage coordinated Structural Debris and Hazard Tree Removal Operations in numerous counties throughout California to remove fire structural debris material from parcels where structures were destroyed by numerous fires, and the removal of Hazard Trees damaged by these fires that present an imminent threat to public infrastructure including public Rights-of-Way (ROW). CalRecycle intends to perform this work in an expedited manner in full coordination with the affected Counties, Cal OES and FEMA requirements as outlined in this IFB, while protecting public health and safety and the environment.

Structural Debris Removal Function: This work will include the preparation, removal, transport, and recycling or disposal of metals, ash, debris, concrete foundations and flatwork, potentially dangerous trees, and contaminated soil on residential properties included in the Structural Debris Removal Function, due to the wildfires listed below. For the Structural Debris Removal Function, a “potentially dangerous tree” is defined as a tree that poses a risk to debris removal and hazard tree removal crews. These trees are removed at the contractor’s expense.

(Work to be Performed Exhibit A pg. 5-24)

- Some commercial properties will also be included in this program at the direction of Cal OES. These properties will be addressed in Item 7 and Item 8 of the Bid Items. Receiving facilities will be identified by the Bidder. A list of landfills that are capable of accepting ash and debris from these Operations is included in Section 4, Reference Documents, Attachment D.

- **Hazard Tree Removal Function:** In addition to the Structural Debris Removal Function, and for the purposes of addressing the immediate threat to public safety due to hazard trees, Cal OES has also authorized a Hazard Tree Removal Function.

Disaster Debris and Hazard Tree Removal (DDHTR) Contractor:

The Contractor hired to remove disaster debris and hazard trees identified by the Assessment and Monitoring Contractor.

Crews:

- Structural Debris Removal Crew
 - Hazard Tree Removal Crew
- Log Deck / Yard Processing Crew

ENVIRONMENTAL PROTECTION PLAN (EPP)

The State will prepare or direct (under a separate contract) the preparation of an Environmental Protection Plan (EPP). The EPP addresses the environmental and historic preservation areas of concern and presents the required Best Management Practices (BMPs) and Avoidance and Minimization Measures (AMMs) to protect them.

DDHTR Contractor shall implement the BMPs and AMMs listed in the EPP throughout the Operation, as described in Section 10.A.b. An example EPP, addressing both structural debris removal and hazard tree removal functions, similar to the EPP anticipated for these Operations is included as part of the IFB, Attachment C (for reference only).

HEALTH AND SAFETY

- DDHTR Contractor shall, at all times, operate equipment and perform labor in a safe workmanlike manner to ensure the safety of its employees and the public. DDHTR Contractor shall pay particular attention to operations around local roads and take all necessary precautions. DDHTR Contractor shall note the number of the power lines crossing the site, dead trees, chimneys, and all underground utilities.
- Contractor Safety Plans should comply with all CalOSHA requirements and include a COVID-19 plan.

County	*Preliminary Estimate: Destroyed Residential Structures	*Preliminary Estimate: Hazard Trees
Operation 1 – North Zone		
Lassen	115	1,570
Plumas	707	19,301
Siskiyou	25	683
Tehama	33	901
Trinity	9	246
Operation 2 – South Zone		
Alpine	15	410
El Dorado	622	16,981
Placer	48	1,310
Nevada	54	1,474
Lake	56	1,529

Scope

This plan accounts for the following counties and fires, split into two operational zones

Operation 1: Lassen, Plumas, Siskiyou, Tehama, and Trinity Counties

Operation 2: Alpine, El Dorado, Placer, Nevada, and Lake Counties

County	Fires	Zone
Alpine	Tamarack	South
El Dorado	Caldor	South
Lake	Cache	South
Lassen	Dixie, Beckwourth	North
Nevada	River	South
Placer	River	South
Plumas	Dixie, Beckwourth	North
Shasta	Monument, McFarland	North
Siskiyou	Lava, Antelope	North
Tehama	Dixie, McFarland	North

North Zone Operation 1

South Zone Operation 2

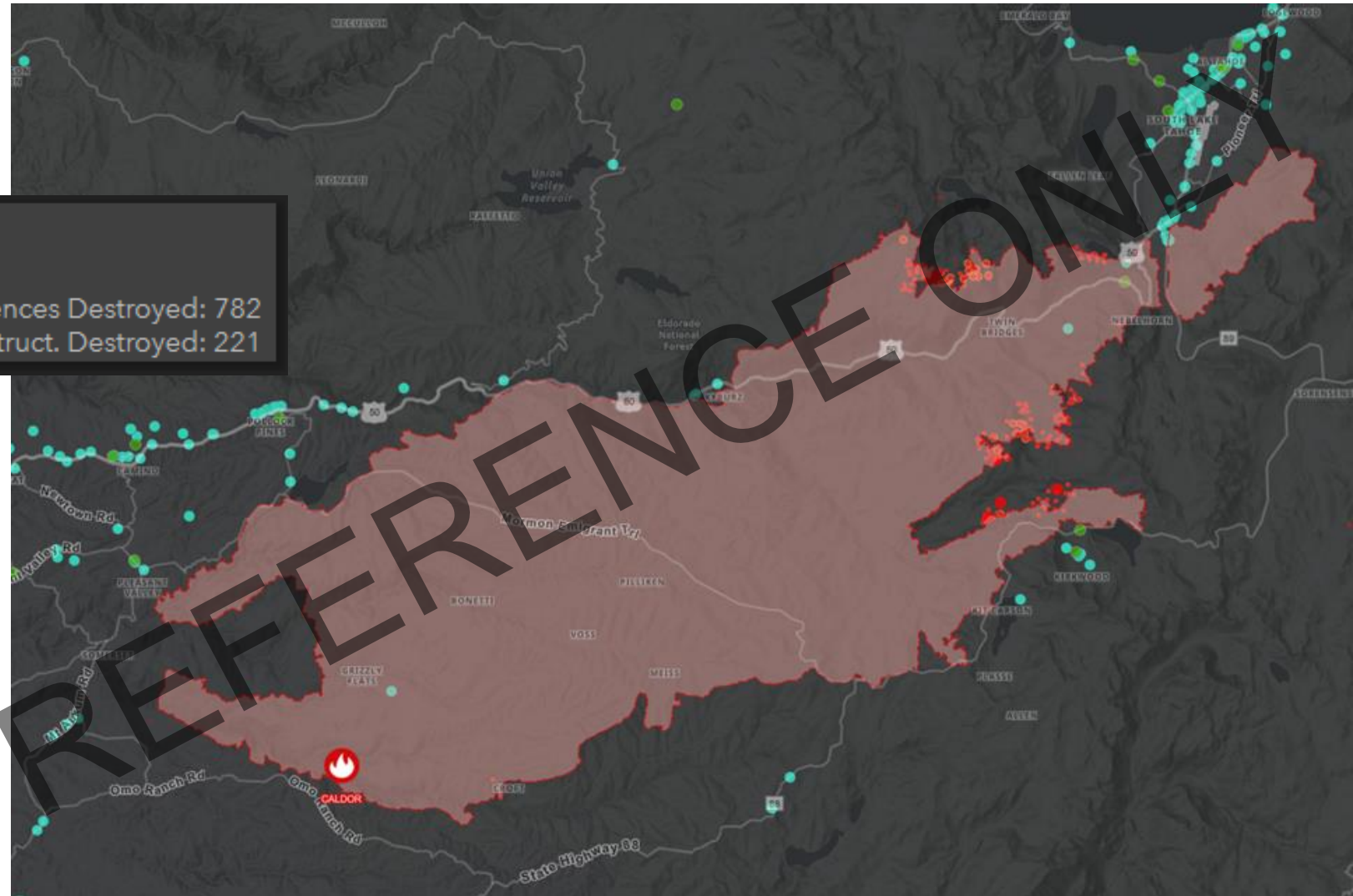
CALDOR

2021-CAENF-024030

218489 Acres Burned

60 Percent Contained

Residences Destroyed: 782
Other Struct. Destroyed: 221

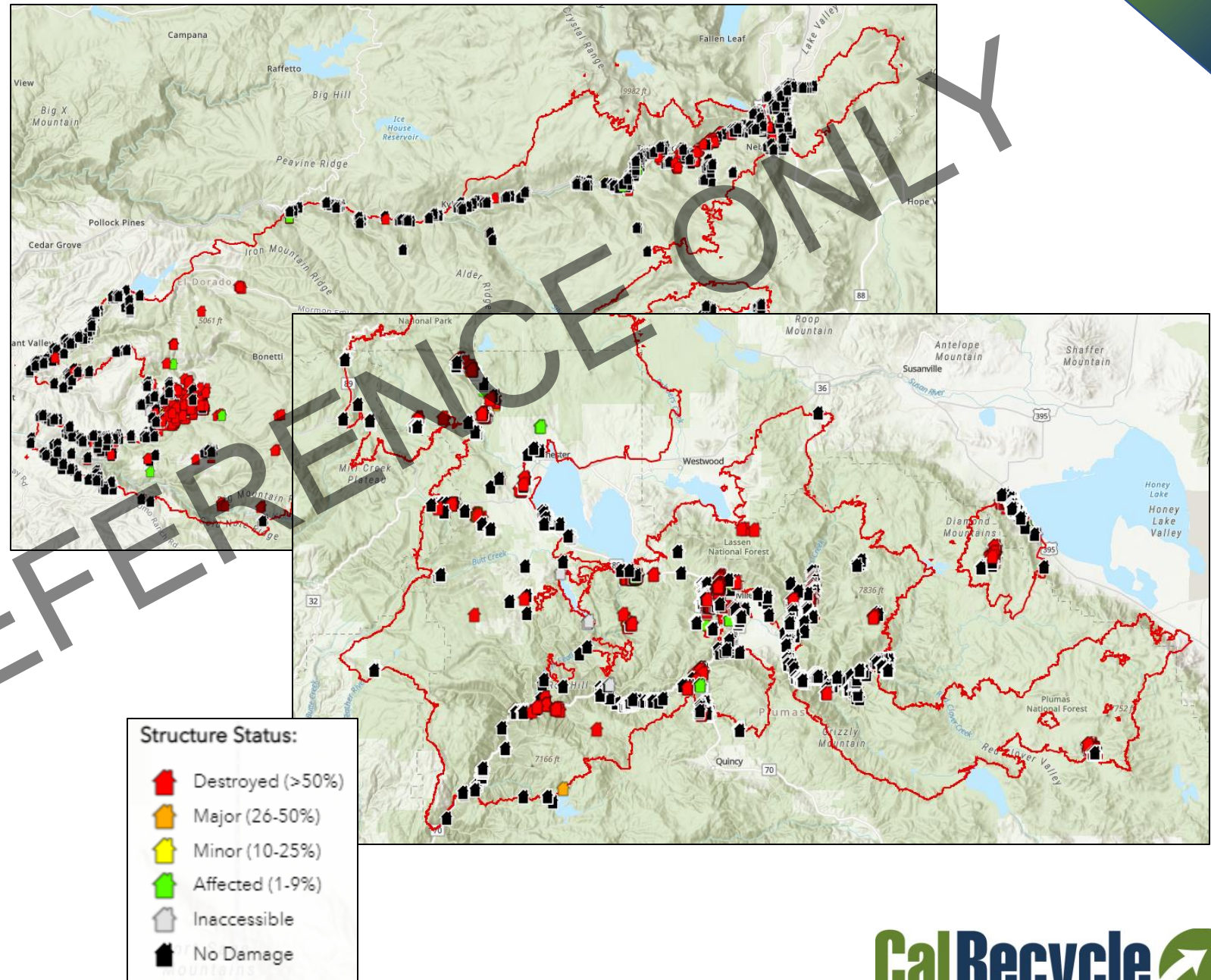


Helpful DTSC Link

<https://dtsc.maps.arcgis.com/apps/dashboards/b0d44c59682e490fac9cbbe86124c102>

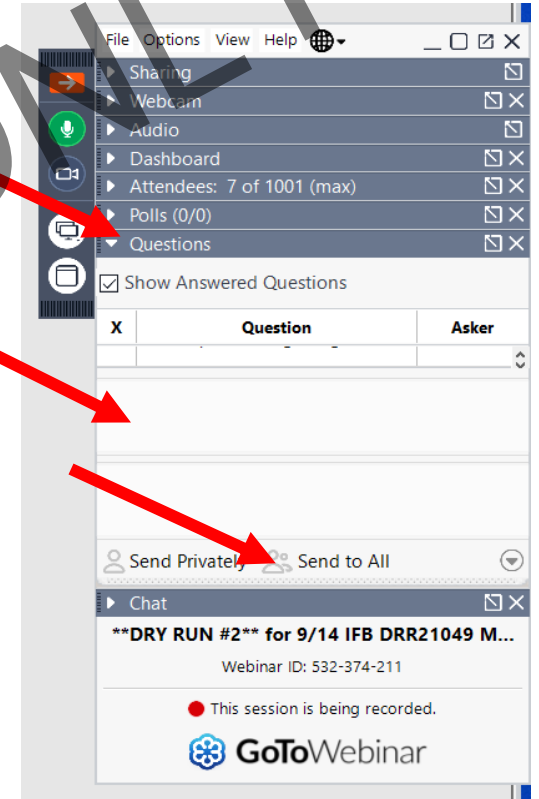
Other Helpful Map Links

- CalFire Structure Status – Caldor Fire
 - <https://www.arcgis.com/apps/webappviewer/index.html?id=366d1a3e25ce4a11a4c0846c3a337ce9>
- CalFire Structure Status – Dixie Fire
 - <https://www.arcgis.com/apps/webappviewer/index.html?id=91c5dc150e53415fa85a2420871aa214>



Questions

- Questions regarding required bid documents and timelines will be answered during this meeting. You may submit your questions via the GoToWebinar side panel.
- Answers given here today are non-binding on CalRecycle.
- To receive a written answer to questions regarding operations and contracts or other items, submit your questions to Contracts@CalRecycle.ca.gov by September 17, 2021, by 5:00 PM.
- All questions will be answered in an Addendum to the IFB which will be posted on CalRecycle's website at <https://www.calrecycle.ca.gov/Contracts>
- Once published, written answers will be binding on CalRecycle



ICS and IMT

Incident Command System (ICS): A standardized approach to the command, control, and coordination of emergency response providing a common hierarchy within which responders from multiple agencies can be effective.

Incident Management Team (IMT): Designated personnel who provide support to incident management at the Branch Level. Includes the Branch Director, Branch Planner, Debris Group Supervisor, Finance Unit Leader, and Logistics Unit Leader, and their respective designees.

The IMT will be made up of State Staff from CalOES and CalRecycle.

Assessment and Monitoring Contractor Staff may fill the Planning Function of the IMT.

Assessment & Monitoring Contractor

- Assessing and Monitoring Debris Footprints
- Asbestos Assessment and Monitoring of Removal and Disposal
- Assessing and Marking Hazard Trees
- Monitoring and Tracking Debris and Hazard Tree Removal Crews
 - Environmental Compliance
 - Safety
 - Proper Debris Removal, Loading, Transport of Debris
 - Proper Felling, Processing, Transport of Trees
 - Record/Document Cradle to Grave of all Materials Generated by the Operation

It is the documentation provided by the A&M Contractor that the State will submit to FEMA for reimbursement.

Detailed Scope of Work at www.calrecycle.ca.gov/Contracts/Current Click on Advertisement DRR21048

Also, tasks to be performed by the A&M Contractor can be found in Exhibit H.

Exhibit H Special Provisions

- Formerly exclusively known as the Debris Removal Operations Plan (DROP)
- Now a contract document also known as Exhibit H Special Provisions
- Contains specifications for tasks to be performed and general order of operations
- Also describes how the tasks to be performed by the A&M Contractor and the DDHTR Contractor(s) interrelate.
- The working relationship between the A&M Contractor and DDHTR Contractor(s) should be one of constant communication throughout the day at all levels of the operation.

Permit Requirements

The Bidder is required to provide:

1. Name(s) and Location(s) of Temporary Log Storage and Processing Facility(ies), Laydown Yard(s), Temporary Debris Management Sites, and/or Temporary Housing Facilities that the Contractor plans to use.
2. Name(s) and Location(s) of **currently operating and permitted landfills**, concrete, and metals recycling facilities, and wood materials end-use facilities (properly permitted to receive intended materials) that the Bidder plans to use.
3. Letter(s) of interest from these currently operational and permitted (**i.e., these facilities must be actively operating at the time of bid submittal**) landfills, concrete and metals recycling facilities and wood materials end-use facilities to enter into an agreement with the Bidder to receive said materials from the facilities that the Bidder plans to use.

Bidder acknowledges that, if Awarded, Bidder will be required to obtain all relevant permits. All lease arrangements with the property owners for this(these) facility(ies) shall be the responsibility of the Contractor.

Permit Requirements (Exhibit H)

Requirement/ Permission	Entity Responsible for Obtaining	Comments
Property owner Site Access/ Authorization for ROE and Access only ROEs	Counties	Executed forms are required by owners before work can begin on their property.
Property owner Access only Agreement	Counties	Executed forms from non-User Agency program property owners to provide access to properties that are part of the User Agency program.
California Environmental Quality Act (CEQA)	Exempt	Operations undertaken, carried out, or approved by a public agency to maintain, repair, restore, demolish, or replace property or facilities damaged or destroyed because of a disaster are exempt from CEQA. Public Resources Code, §§ 21080(b)(3), 21172; see also, 14 CCR 15269(a).
Section 1602 or 1610 Streambed Alteration, California Department of Fish and Wildlife (CDFW)	CDFW; User Agency	User Agency's PSC, OSC, Environmental Unit Lead, and/or A&M Contractor will consult with CDFW for removal of dangerous burned trees. Typically, the Operation does not include work in, or through, a streambed. If a stream crossing is necessary to access and remove burned debris, User Agency will consult with CDFW to determine whether work is consistent with the EPP or will need to submit a Lake or Streambed Alteration Program Notification of Emergency Work Permit to CDFW within 14-days of commencing with streambed crossing.
Federally Funded or on Federal Property Follow National Environmental Policy Act (NEPA)	FEMA as lead Agency; User Agency	User Agency's PSC, OSC, Environmental Unit Lead, and A&M Contractor will Consult with FEMA or Federal lead agency regarding the debris removal operation and potential impacts on federally protected resources (i.e., waters of the US, etc.) endangered species, and historical and cultural artifacts, etc. to be addressed and incorporated in the EPP.
Federally Funded or on Federal Property -- Federal Section 7 Permit for Federally Endangered Species	FEMA as lead Agency; User Agency	User Agency's PSC, OSC, Environmental Unit Lead, and A&M Contractor will consult with FEMA or Federal lead agency regarding the debris removal operation and potential impacts on federally endangered species or endangered species habitat as described in the EPP. Including submittal of final reports per the direction of the FEMA consultation with USFWS, and/or NOAA Marine Fisheries Service. Maps will be produced using GPS at sub-meter accuracy.
Federally Funded or on Federal Property – Section 106 National Historic Preservation Act assessments	FEMA as lead Agency; User Agency	User Agency's PSC, OSC, Environmental Unit Lead, and A&M Contractor will consult with FEMA who will consult with the State Historic Preservation Office (SHPO) to determine if there are any archeological sites of interest/concern within the footprint of the debris removal operation. If so, determine how to mitigate, as addressed in the EPP. A&M will provide Archaeologists to perform assessment and monitoring, and draft and submittal of final reports per the direction of the FEMA consultation with SHPO. Maps will be produced using GPS at sub-meter accuracy.
Federally Funded or on Federal Property ---- US Army Corps of Engineers (USACE) Non-Reporting Nationwide 33 Streambed crossing or Regional General Permit to address Clean Water Act (CWA) Section 404 Regional General Permit for Clean Water Act Section permit	User Agency or its A&M Contractor	User Agency PSC, OSC and/or its A&M Contractor will consult with the USACE regarding the applicability of the Nationwide 33 permit for the emergency response/recovery activities affiliated with the operation or whether a Regional General Permit to address CWA Section 404 is required. Permit applications will be submitted per the February 10, 2016 Updated Map and Drawing Standards, including the use of sub-meter accurate GPS readings for the Ordinary High Water Mark. A 401 Permit approval from the local Regional Water Quality Control Board (RWQCB) may be required, as addressed in the EPP.

Permit Requirements (cont...) (Exhibit H)

Requirement/ Permission	Entity Responsible for Obtaining	Comments
401 Permit	CalEPAS State Water Resources Control Board; User Agency or its A&M Contractor	User Agency's PSC, OSC, Environmental Unit Lead, and/or A&M Contractor will consult with the RWQCB, and submit information required for review and approval as addressed in the EPP.
Laydown and storage yards, and other necessary operations supporting facilities will likely require National Pollutant Discharge Elimination System (NPDES) Stormwater permits	DDHTR Contractor for support facilities. Some support by the A&M Contractor	DDHTR Contractor will coordinate with the landowner, the City or County land use municipality and the RWQCB to apply for and obtain NPDES permits as required and install and maintain necessary BMPs.
Road Use or Special Permits for accessing private properties from roads on Federal lands (BLM, USFS, etc.)	DDHTR Contractor for access across roads on federal lands. EHP support from the A&M Contractor. Plus, may require additional assistance from state agencies and User Agency CM and /or OSC or designee.	Permits will require biological and historical preservation assessments and likely bmp protections to be installed and maintained and ultimately removed.
CalFire Forest Practice Rules Permits for Timber Harvest activities (1104.1b, 1039g, 1052).	DDHTR Contractor's LTO to prepare, sign, and implement permit(s) and their requirements. May obtain assistance from A&M Contractor's RPF.	Prior to felling any Hazard Trees, the DDHTR Contractor shall confer with the CalFire Regional Office and the RWQCB representatives to confirm necessary permits and/or confirm applicable exemptions then submit obtain and implement required BMPs and AMMs, under A&M Contractor Forester's oversight and support.
County Encroachment Permit	DDHTR Contractor (May be waived)	Use of temporary trailers or storage units on County ROW will require submittal of an application.
County Demolition Permit	User Agency (may be waived)	Counties to issue a blanket permit to demolish all structures destroyed by the fire under this program.
Air District Asbestos Demolition Permit/ Notification	User Agency (may be waived)	User Agency or its A&M Contractor will make appropriate notification to local Air Quality Management District (AQMD), California Air Resources Board (CARB), and/or Federal EPA for demolition of any remaining standing structures and chimneys that fall under the requirement, as necessary.
Site Hazardous Waste Transport	User Agency	User Agency will submit and emergency Department of Transportation (DOT) waiver to allow for the transport and consoling of hazardous materials at a predefined staging area within the immediate burn scar area.
Traffic Control (city, county roadways and state highways)	DDHTR Contractor	User Agency DDHTR Contractors apply for and obtain all road and highway permits in support of these operations and will supply necessary signage as required by the permitting agency(ies).
Hazardous Waste Disposal	User Agency	User Agency will contact the DTSC if any household hazardous waste is found on properties. User Agency will direct DDHTR Contractors to place such materials at one location on each property and/or in an environmentally protective, safe, and secure storage area (as appropriate) and arrange for the DTSC to make special collection trips, "milk runs", to collect and appropriately transport and dispose of such materials.
Temporary Helipoint Authorization	CalTrans	For temporary take-off and landing facilities related to debris or tree removal via helicopter.

Environmental Compliance Liaison

“DDHTR Contractor’s Environmental Compliance Liaison (ECL) is responsible to ensure that the DDHTR Contractor meets all of the environmental permit requirements and all EPP BMPs are properly implemented for all of the DDHTR Contractor’s temporary facilities (including but not limited to: laydown yards, log processing and storage yards, materials processing and transfer facilities, vehicle adjudication facilities, DOT inspection yards, and other temporary facilities as required for the Operation) . The ECL is responsible for preparing and overseeing the appropriate implementation of each of the water quality BMPs, and Historic Preservation AMMs required in the Operational permits enforced by CAL FIRE with respect to CEQA and NEPA environmental protection requirements, for protection of endangered and impacted species and their habitats under emergency Operations, summarized in the EPP.”

Liaison to the Registered Professional Forester (RPF)

“Forest Practice Rules do not require the use of a RPF for the submittal or operations of the above identified Exemption Notices, however, there are specific Forest Practice Rule regulations (per 14 CCR sections 1038(b) and 1038.1, and 14 CCR section 1104.1) which prevent the use of the Exemption Notice in certain environmental situations. Since this Operation is being coordinated with other regulatory agencies, DDHTR Contractor shall provide a Liaison to RPF (Liaison) to the A&M Contractor’s RPF. The Liaison shall be responsible for the preparation and submittal of the Notices of Exemption.

The Liaison(s) shall oversee, monitor, and manage the Hazard Tree removal Operations and related activities, and assure their operation follows the Forest Practice Rules and the Public Agency, Public and Private Utility ROW Exemption documents.”

Liaison to the Registered Professional Forester (RPF) (cont...)

“The Liaison is responsible for the following:

- a. Sign and file on behalf of the Department, the Public Agency, Public and Private Utility ROW Exemptions for public agency removal of timber per 14 CCR section 1104.1, relating to conversion exemptions of the Forest Practice Rules. Upon execution and submittal of valid Public Agency, Public and Private Utility ROW Exemptions to the appropriate CalFire RPF, DDHTR Contractor and/or their respective Liaison shall provide written notification to the appropriate California Regional Water Quality Control Board (RWQCB), and the IMT.*
- b. Verify clear access to trees on each assigned property prior to sending Hazard Tree Removal Crews to the assigned property.*
- c. Determine if any trees require crane assisted removal and notify the OSC or designee, prior to sending Tree Removal Crews to the assigned property.*
- d. Identify and notify the OSC or designee if there is/are water courses that either need to be crossed to access a property or are in close proximity to any trees to be removed on a property for which a valid ROE has been received by the IMT.”*

Work Plans and Milestones

Exhibit A Section 14. Operational Milestones, Mobilization Requirements, and Metrics

Contractor will be required to submit several work plans throughout the operation and is advised to staff adequately for work plan development, writing and field execution.

Some work plans outlined in Exhibit A Section 14 include:

- Workforce Housing Plans
- Hauling and Reuse/Disposal Plans by County
- Hazard Tree Removal Work Plan

Each operation is unique, and the Incident Management Team may request additional work plans for specific or unforeseen situations.

Bid Line Items

Attachment 1 – Cost Bid Schedule

Item 1 – Mobilization/Demobilization Per Crew

- ½ Paid at Mob and ½ Paid at Demob
- May be paid more than once at the sole discretion of CalRecycle

Items 2,3,6 – Per Lot Costs, all inclusive

Item 4 – Soil Removal Rescrape

- Regardless of the number of re-scrapes required or the quantity of soil removed, this bid item will be paid only once per parcel and for no more than 25% of the total number of parcels where debris removal is performed. Further re-scrapes necessary, as determined by CalRecycle, shall be performed without compensation. These compensation limitations do not apply to parcels where CalRecycle determines that cleanup goals cannot be met due to site conditions unrelated to the disaster, at the sole and exclusive discretion of CalRecycle.

Bid Line Items (cont...)

Attachment 1 – Cost Bid Schedule

Item 5 – Vehicle Removal

- 5a – Vehicle Adjudicated On-site, 5b – Vehicle Adjudicated Off-site

Items 7, 8 – Costs for Public or Commercial Parcels

Item 10 – Non-Working Days

- Not a bid item. Set at 1.5% of Item 2 per crew per day

Bid Line Items (cont...)

Attachment 1 – Cost Bid Schedule

DDHTR Contractor shall provide up to ten (10) bridges of up to 50 feet per bridge to be installed simultaneously to ensure that the overall debris and hazard tree removal operations' productivities are not negatively impacted from meeting the operational schedule.

Item 9 – Temporary Long Bridges

- Bridges that the IMT agrees are necessary and are greater than fifty (50) feet in length, as determined by the ordinary high-water marks (as determined by the permitting agency(ies)) or existing damaged bridge pre-fire length, shall be paid by CalRecycle as a 15% of flat per parcel cost listed by the DDHTR Contractor as Bid Item No.2 per IMT approved bridge setup. This cost includes mobilization, permitting costs, labor, materials, and equipment required for setup and takedown and demobilization.

Core Values

Integrity

Respect

Service

Resiliency

Leadership

All our actions should be consistent with these values in the workplace and in the community in which we are guests.

Our job is to quickly and safely remove fire debris and hazard trees so that these communities can begin rebuilding their lives.

Questions

- Questions regarding required bid documents and timelines will be answered during this meeting. You may submit your questions via the GoToWebinar side panel.
- Answers given here today are non-binding on CalRecycle.
- To receive a written answer to questions regarding operations and contracts or other items, submit your questions to Contracts@CalRecycle.ca.gov by September 17, 2021, by 5:00 PM.
- All questions will be answered in an Addendum to the IFB which will be posted on CalRecycle's website at <https://www.calrecycle.ca.gov/Contracts>
- Once published, written answers will be binding on CalRecycle

