

What's in California Landfills: Measuring Single-Use Packaging and Plastic Food Service Ware Disposed (2025)

Appendix 1 – Detailed Methodology and Data Tables

Preliminary Findings

DRRR-2025-1755

Table of Contents

Detailed Methodology and Data Tables	1
Overview of Informational and Data Tables Organized by Phases of the Study	1
Section 1: Detailed Methodology	1
Section 1.1: Sorting Categories List and Sorting Guidance.....	1
Section 1.2: Facility Selection and Sample Allocation	30
Section 1.3: Field Sampling Schedule.....	31
Section 1.4: Sample Allocations.....	31
Section 1.5: Vehicle Surveys.....	32
Section 1.6: Sample Collection	33
Section 1.7: Sample Characterization	34
Section 2: Data Analysis	36
Analysis: CMC Percentage Composition.....	36
Additional Analysis: Composition Estimates.....	39

Detailed Methodology and Data Tables

This section outlines the study design, methodology, data analyses procedures, and supplementary data tables. Each section provides additional detail on its respective topic, with consideration to the overall scope and objectives of the material characterization study.

Overview of Informational and Data Tables Organized by Phases of the Study

- Appendix 1, Section 1.1, Table A1: displays the material characterization study material sorting list by category. The list includes the material class, type, form, code, sorting rule, examples, and additional required information.
- Appendix 1, Section 1.1, Table A2: provides the sample count for the quality control sort.
- Appendix 1, Section 1.1, Table A3: provides the sample count for additional contractor staff sorts.
- Appendix 1, Section 1.3, Table A4: displays the field sampling schedule.
- Appendix 1, Section 1.4, Table A5: displays the facility selection and sample allocation.
- Appendix 1, Section 2, Table A6: estimates the percent composition by weight of material types within classes.
- Appendix 1, Section 2, Table A7: provides within-sector composition analysis for each material type.
- Appendix 1, Section 2, Table A8: provides statewide disposal estimates for all material types.

Section 1: Detailed Methodology

Section 1.1: Sorting Categories List and Sorting Guidance

This section describes the in-field sorting conducted by contractor staff. Additionally, CalRecycle staff provide a descriptive narrative of the sorting guidance given to contractor staff, including special cases encountered during material sortation. A table is also included that illustrates the sorting list, which includes combined Covered Material Categories (CMC) codes with the CMC list.

Study Material Sorting List

Table A1 is the material sorting list used in this study, which is aligned to covered material categories ([the most updated version of the covered material categories was published January 1, 2025](#)). Table A1 shows the material sorting categories, including sorting rules and examples for the sort. Each sorting category identifies a combination of material class, material type, and form. The first column in the table is a numeric count. The second column describes the material class (glass, ceramic, metal, paper and fiber, plastic, wood, and other organic materials). The third column describes the material type, and the fourth column describes the form of the covered materials in that covered material category.

The fifth column, which contains a code, includes which covered material categories are included within each sorting category and refers to the CMC List [published on July 1, 2024](#), pursuant to the [Plastic Pollution Prevention and Packaging Producer Responsibility Act](#) (Senate Bill (SB) 54, Allen, Chapter 75, Statutes of 2022, the Act). All sorting categories with a corresponding code starting with “24_” are specific to covered material. Additionally, in the code column, the alphanumeric material code ends with either an “N” and/or a “P” indicating whether the item contains an inseparable plastic component (P) or contains no plastic component (N). An “N/P” indicates that the material form contains two covered materials, one with and one without separable plastic components. Entries in the code column with the following text mean:

- “Mixture”: categories in which a covered material was jointly discarded with other material (e.g., food discarded in original packaging),
- “Potential reuse”: categories for packaging and food service ware that may be reusable or refillable, and
- “N/a”: remainder categories for materials other than covered material.

The sixth column presents a sorting rule with a description of the identifiable features of these items. The seventh column provides examples of expected items within each material class, type, and form.

Table A1: Study Material Sorting List

Count	Class	Type	Form	Combined CMC Code	Sorting Rule	Examples
1	Glass	Glass	Bottles and Jars	24_G1N/P	Means glass bottles and jars that do not display the CRV indication. Includes whole and broken containers.	Bottles and jars of: Food; Candles; Personal care products; Salad dressing; Sauce
2	Glass	Glass	Other Forms	24_G2N/P	Means glass that does not display the CRV indication and are not in the form of a bottle or jar. Includes whole and broken containers.	Glass ampules; Closed-ended glass tubes
3	Glass	Glass	Potentially Reusable Packaging and Food Service Ware	Potential Reuse	Means packaging and food service ware composed of a durable product intended for multiple uses. Item is washable between uses. Excludes packaging and food service ware items intended for single use but reused incidentally.	Dishes; Refillable bottles; Wrappers; Glass straws; Glass milk jugs

Count	Class	Type	Form	Combined CMC Code	Sorting Rule	Examples
4	Glass	Glass	Small – Two or more sides measuring 2” or less	24_G3N/P	Means any glass less than 2 inches such that it will pass through a screen with a 2-inch mesh.	Broken glass fragments; Perfume sample jars; Small glass containers; Herb jars; Cosmetic jars; Glass droppers; Glass spray bottles; Glass vials
5	Glass	Glass	Remainder/ Composite Glass	n/a	Means glass which does not fall into any of the above categories. Includes CRV beverage containers. Includes whole and broken glass.	Flat glass; Automotive glass; Soda bottles; Beer bottles; Fruit juice bottles; Wine cooler bottles; Liquor bottles
6	Ceramic	Ceramic	All Forms	24_C1N/P	Means all forms of ceramic used for plastic single-use food service ware or single-use packaging. Includes whole and broken ceramic.	Bottles and jars of: Food; Candles; Personal care products; Yogurt; Beverages

Count	Class	Type	Form	Combined CMC Code	Sorting Rule	Examples
7	Ceramic	Ceramic	Potentially Reusable Packaging and Food Service Ware	Potential Reuse	Means packaging and food service ware composed of a durable product intended for multiple uses. Item is washable between uses. Excludes packaging and food service ware items intended for single use but reused incidentally.	Cups; Dishes; Utensils
8	Ceramic	Ceramic	Small – Two or more sides measuring 2” or less	24_C2N/P	Means any ceramic less than 2 inches such that it will pass through a screen with a 2-inch mesh.	Fragments of broken ceramic; Small ceramic containers
9	Ceramic	Ceramic	Remainder/ Composite Ceramic	n/a	Means ceramic which does not fall into any of the above categories. Includes whole and broken ceramic.	Tera cotta pots; Ceramic tiles; Toilets; Sinks; Tubs
10	Metal	Aluminum	Non-aerosol Container	24_M1N/P	Means any container that is made mainly of aluminum, with or without lids attached, that does not display the CRV indication. Does not include aerosol containers or architectural paint products.	Meat cans; Food cans; Non-beverage bottles; Cups; Candle/screw top/other tins; Collapsible tubes; Coffee pods

Count	Class	Type	Form	Combined CMC Code	Sorting Rule	Examples
11	Metal	Aluminum	Foil Sheets	24_M2N/P	Means aluminum foil or aluminum item in the form of a sheet or wrap.	Aluminum foil sheets
12	Metal	Aluminum	Foil Molded Containers	24_M3N/P	Means flexible molded container composed of aluminum.	Molded trays; Takeout containers; Food trays; Pie pans
13	Metal	Aluminum	Aerosol Cans	24_M4P	Means rigid aluminum cans with aerosol spray tops. Excludes any container believed to contain any amount of hazardous product.	Aerosol cans for: Personal care products; Food; Cleaning products
14	Metal	Aluminum	Other Forms	24_M5N/P	Means any aluminum item, other than aluminum non-aerosol containers, foil sheets, foil-molded containers, or aerosol cans, that is single-use packaging or plastic single-use food service ware.	Lids
15	Metal	Tin/Steel/Bimetal	Non-aerosol Container	24_M6N/P	Means rigid containers, made mostly of steel, that do not display the CRV indication. These items will stick to a magnet and may be tin-coated.	Soup cans; Coffee cans; Bimetal containers with steel sides and aluminum ends; Canned food containers; Candy tins

Count	Class	Type	Form	Combined CMC Code	Sorting Rule	Examples
16	Metal	Tin/Steel/Bimetal	Aerosol Cans	24_M7P	Means rigid cans with aerosol spray tops, made mostly of steel. Material will stick to a magnet. Includes materials marked with the number 40 and the code FE with the chasing arrows. Excludes any container believed to contain any amount of hazardous product.	Aerosol cans for: Cleaning products; Personal care products; Food
17	Metal	Tin/Steel/Bimetal	Other Forms	24_M8N/P	Means single-use packaging and plastic single-use food service ware made of tin/steel/bimetal item that cannot be put in any other category.	Lids; Strapping
18	Metal	Other Non-ferrous	All Other Forms	24_M9N/P	Means any single-use packaging and plastic single-use food service ware made of non-ferrous metal that does not fit into any other category, is not stainless steel, and is not magnetic.	Non-ferrous: Candy box or container; Cookie box or container; Mesh

Count	Class	Type	Form	Combined CMC Code	Sorting Rule	Examples
19	Metal	Other Ferrous	All Other Forms	24_M10N/P	Means any single-use packaging and plastic single-use food service ware that is ferrous metal and does not contain any steel.	Ferrous: Candy box or container; Cookie box or container
20	Metal	Metal	Potentially Reusable Packaging and Food Service Ware	Potential Reuse	Means packaging and food service ware composed of a durable product intended for multiple uses. Item is washable between uses.	Dishes; Utensils
21	Metal	Metal	Small – Two or more sides measuring 2” or less	24_M12N/P	Means metal less than 2 inches such that it will pass through a screen with a 2-inch mesh.	Bottle caps; Metal clasps; Mini tins; Sachets; Wrappers
22	Metal	Metal	Remainder/ Composite Metal	n/a	Means metal that cannot be put in any other category. Includes CRV beverage containers.	Soda cans and bottles; Beer cans and bottles; Wine cans; Cocktail beverage cans; Alcoholic seltzer cans; Motors; Major appliances; Insulated wire; Fasteners (such as nails and screws)

Count	Class	Type	Form	Combined CMC Code	Sorting Rule	Examples
23	Paper/Fiber	Kraft Paper	All Forms	24_PF1N/P	Means stiff, sturdy paper derived from wood pulp, usually brown, that is single-use packaging or plastic single-use food service ware.	Packaging paper; Envelopes; Mailers; Shipping filler/cushioning paper; Floral arrangement wrapping paper; Butcher paper; Shipping tubes; Take out boxes
24	Paper/Fiber	Molded Fiber	All Forms	24_PF14N/P	Means paper fiber molded to shape designed specifically for single-use packaging or plastic single-use food service ware.	Molded egg cartons; Packaging inserts; Roll cradles; Bowls; Take-out containers; Trays
25	Paper/Fiber	Multi-Material Laminate	Aseptic Cartons	24_PF15P	Means bleached paperboard or paper cartons with a foil liner and plastic coating that do not display the CRV indication.	Cartons for: Juice; Milk; Water; Soup or broth
26	Paper/Fiber	Multi-Material Laminate	Gable-top Cartons	24_PF5P	Means plastic-coated paper-based cartons with a triangular top that do not display the CRV indication.	Cartons for: Milk; Egg substitute; Juice; Creamer

Count	Class	Type	Form	Combined CMC Code	Sorting Rule	Examples
27	Paper/Fiber	OCC	Waxed Cardboard	24_PF8N/P	Means waxed paper laminate, usually composed of three layers, with a center wavy layer sandwiched between the two outer layers.	Produce boxes
28	Paper/Fiber	OCC	Cardboard	24_PF9N/P	Means paper laminate, usually composed of three layers, with a center wavy layer sandwiched between the two outer layers. It can be uncoated or have a (glossy) coating on the inside or outside. Excludes waxed cardboard.	Shipping boxes; Electronic packaging cartons; Sheets used as dividers in boxes; Corrugated wrap; Shipping padding
29	Paper/Fiber	Multi-Material Laminate	Other Forms	24_PF7P	Means single-use packaging and plastic single-use food service ware made mostly of paper laminated with plastic and other materials, that do not fit into any other category. This includes paper with a laminated plastic coating.	Food containers; Snack containers; Parchment paper; Poly-coated paper

Count	Class	Type	Form	Combined CMC Code	Sorting Rule	Examples
30	Paper/Fiber	Paperboard	All Forms	24_PF10N/P	Means single-use packaging and plastic single-use food service ware made of paperboard. Excludes cardboard (OCC).	Boxes for: Cereal; Frozen food; Candy/cookie; Jewelry; Cigarettes; Cosmetics; Pasta; Packaging inserts; To-go containers; Food trays
31	Paper/Fiber	White Paper	All Forms	24_PF11N/P	Means single-use packaging or plastic single-use food service ware made of white paper.	White shipping envelopes, with or without clear windows; White expandable packing paper
32	Paper/Fiber	Other/Mixed Paper	All Forms	24_PF12N/P	Means single-use packaging and plastic single-use food service ware made of other or mixed paper/fiber that does not fit into any other category.	Waxed paper liners; Waxed paper bags; Freezer paper

Count	Class	Type	Form	Combined CMC Code	Sorting Rule	Examples
33	Paper/Fiber	Other/Mixed Paper	Potentially Reusable Packaging and Food Service Ware	Potential Reuse	Means packaging and food service ware composed of a durable product intended for multiple uses. Item is washable between uses. Excludes packaging and food service ware items intended for single use but reused incidentally.	Durable items for the display, cooling, or transportation of food
34	Paper/Fiber	Paper/Fiber	Small – Two or more sides measuring 2” or less	24_PF16N/P	Means any paper less than 2 inches such that it will pass through a screen with a 2-inch mesh.	Small paper cushioning; Sugar packets; Hang tabs; Candy wrappers
35	Paper/Fiber	Other/ Mixed Paper	Remainder/Composite Mixed Paper	n/a	Means any paper that cannot be put in any other category. Includes CRV beverage containers.	Self-adhesive notes; Hardcover and paperback books; Greeting cards; Printing or notebook paper; Newspapers; Magazines; Grocery bags; Aseptic or gable-top cartons for wine or liquor

Count	Class	Type	Form	Combined CMC Code	Sorting Rule	Examples
36	Plastic	PET (#1)	Bottles, Jugs, and Jars (Clear/ Natural)	24_P1P	Means clear bottles, jugs, and jars that are marked and identified as PET or PETE (#1) that do not display the CRV indication.	Bottles, jugs and jars for: Food; Household products; Personal care products
37	Plastic	PET (#1)	Bottles, Jugs, and Jars (Pigmented/Color)	24_P2P	Means tinted/pigmented/colored bottles, jugs, and jars that are marked and identified as PET or PETE (#1) that do not display the CRV indication. These may be translucent or opaque.	Bottles, jugs and jars for: Food; Household products; Personal care products
38	Plastic	PET (#1)	Other Rigid Containers, Cups, Lids Plates, Trays, Tubs	24_P38P	Means a PET rigid plastic container, cup, lid, plate, tray, or tub that is marked and identified as PET or PETE (#1). Resin can be of any color, pigmented or clear. Includes thermoformed PET containers.	PET clamshell to-go containers; Berry containers; Plastic tubs used for lettuce; Cold cups; Trays; Cold cup lids; Plastic egg cartons; Plastic packaging for cupcakes; Clamshell packaging for hardware

Count	Class	Type	Form	Combined CMC Code	Sorting Rule	Examples
39	Plastic	PET (#1)	Other Rigid Items	24_P39P	Means rigid items, other than bottles, jugs, and jars, cups, lids, plates, trays, tubs, and other containers, that do not fit in any other category that are marked and identified as PET or PETE (#1).	Toy packaging; Custom rigid packaging
40	Plastic	PET (#1)	Flexible and Film Items	24_P5P	Means flexible and film single-use packaging and food service ware items that are marked and identified as PET (#1).	Film for: Food; Tertiary packaging; Ovenable film; Strapping; Mailers
41	Plastic	HDPE (#2)	Bottles, Jugs, and Jars (Clear/ Natural)	24_P6P	Means clear/natural bottles, jugs, and jars that are marked and identified as HDPE (#2) that do not display the CRV indication. The plastic is cloudy white, allowing light to pass through it.	Bottles, jugs and jars for: Food; Household products; Personal care products

Count	Class	Type	Form	Combined CMC Code	Sorting Rule	Examples
42	Plastic	HDPE (#2)	Bottles, Jugs, and Jars (Pigmented/Color)	24_P7P	Means tinted/pigmented/colored bottles, jugs, and jars, that are marked and identified as HDPE (#2) that do not display the CRV indication. These may be translucent (of a color other than milky-white) or opaque.	Bottles, jugs and jars for: Food; Household products; Personal care products
43	Plastic	HDPE (#2)	Pails and Buckets	24_P8P	Means pails and buckets over 1-gallon (including 5-gallon buckets) that are marked and identified as HDPE (#2). Does not include pails and buckets for architectural paint.	Buckets for drywall mud; Bulk food buckets
44	Plastic	HDPE (#2)	Other Rigid Items	24_P40P	Means rigid items, other than bottles, jugs, jars, pails, and buckets, that are marked and identified as HDPE (#2) and used as single-use packaging or plastic single-use food service ware.	Boxes and tubs for: Food; Household products; Personal care products; Tubes for frozen juice concentrate; 4- or 6-pack carriers for aluminum beverage cans

Count	Class	Type	Form	Combined CMC Code	Sorting Rule	Examples
45	Plastic	HDPE (#2)	Flexible and Film Items	24_P10P	Means flexible and film single-use packaging and plastic single-use food service ware items that are marked and identified as HDPE (#2).	Mailers; Cereal bags; Take-out bags; Rice bags; Detergent bags; Child-resistant pouches
46	Plastic	PVC (#3)	Rigid Items	24_P11P	Means rigid single-use packaging and plastic single-use food service ware items that are marked and identified as PVC (#3) that do not display the CRV indication.	Clamshells; Bottles; Jugs; Jars; Boxes
47	Plastic	PVC (#3)	Flexible and Film	24_P12P	Means flexible and film single-use packaging and plastic single-use food service ware items that are marked and identified as PVC (#3).	Shrink film; Tubing sleeves
48	Plastic	LDPE (#4)	Bottles, Jugs, and Jars	24_P13P	Means bottles, jugs, and jars that are marked and identified as LDPE (#4) that do not display the CRV indication.	Bottles, jugs and jars for: Food; Household products; Personal care products

Count	Class	Type	Form	Combined CMC Code	Sorting Rule	Examples
49	Plastic	LDPE (#4)	Other Rigid Items	24_P14P	Means rigid items, other than bottles, jugs, and jars, that are marked and identified as LDPE (#4) and are used for single-use packaging or plastic single-use food service ware	Containers for: Food; Household products; Personal care products; Cups; Lids; Trays; Tubs
50	Plastic	LDPE (#4)	Clear Non-Bag Film	24_P15P	Means clear, film-type items that are marked and identified as LDPE (#4), used in single-use packaging and plastic single-use food-service ware, but not identified as bags.	Stretch film; Industrial film; Bubble wrap; Air pillows
51	Plastic	LDPE (#4)	Other Flexible and Film Items	24_P16P	Means flexible or film single-use packaging and plastic single-use food service ware items marked LDPE (#4).	6-pack soda can/beer can rings; Bread bags; Mesh citrus bags; Food packaging; Candy wrappers; Plastic cutlery packaging
52	Plastic	PP (#5)	Bottles, Jugs, and Jars	24_P17P	Means bottles, jugs, and jars that are marked and identified as PP (#5) that do not display CRV indication.	Bottles, jugs and jars for: Food; Household products; Personal care products

Count	Class	Type	Form	Combined CMC Code	Sorting Rule	Examples
53	Plastic	PP (#5)	Other Rigid Containers, Cups, Lids, Plates, Trays, and Tubs	24_P41P	Means rigid containers, cups, lids, trays, and tubs that are marked and identified as PP (#5). Includes thermoformed PP containers and other items that are single-use packaging or plastic single-use food service ware.	Clear cups and lids; Deli containers/tubs; To-go containers (e.g. clamshells); Plates; Bowls; Multiple-compartment trays/plates; Berry baskets
54	Plastic	PP (#5)	Utensils	24_P19P	Means single-use utensils that are marked and identified as PP (#5). Excludes utensils that are clearly designed or labeled for reuse.	Knives; Forks; Spoons; Chopsticks
55	Plastic	PP (#5)	Other Rigid Items	24_P20P	Means rigid single-use packaging and plastic single-use food service ware items that are marked and identified as PP (#5) that do not fit into another category.	Corrugated pads

Count	Class	Type	Form	Combined CMC Code	Sorting Rule	Examples
56	Plastic	PP (#5)	Clear Non-Bag Film	24_P21P	Means clear, film-type items that are marked and identified as PP (#5) but not identified as a bag and used for single-use packaging and plastic single-use food service ware.	Adhesive tape; Cellophane-type film; Basket wrap
57	Plastic	PP (#5)	Other Flexible and Film Items	24_P22P	Means flexible or film items that are marked and identified as PP (#5) that are single-use packaging or plastic single-use food service ware. Includes pigmented non-bag film.	Candy or snack bags; Rice bags; Dog and cat dry food bags; Poly strapping
58	Plastic	PS (#6)	Expanded/Foamed Hinged Containers, Plates, Cups, Tubs, Trays, and Other Foamed Containers	24_P23P	Means expanded/foamed items that are marked and identified as PS (#6) that are single-use for plastic food service ware or packaging.	Clamshell to-go containers; To-go soup containers; Bowls; Plates; Cups; Expanded foam egg cartons; Meat trays

Count	Class	Type	Form	Combined CMC Code	Sorting Rule	Examples
59	Plastic	PS (#6)	Other Expanded/ Foamed Forms	24_P42P	Means expanded/foamed forms that are marked and identified as polystyrene (#6) items that do not fit into any other category that are single-use packaging or plastic single-use food service ware.	Foam blocks; Polystyrene sheets; Foam rolls; Convuluted foam; Foam netting; Foam tubing; Wine shippers
60	Plastic	PS (#6)	Utensils	24_P27P	Means single-use utensils that are marked and identified as PS (#6). Excludes utensils that are clearly designed or labeled for reuse.	Forks; Knives; Spoons
61	Plastic	PS (#6)	Solid Hinged Containers, Plates, Cups, Tubs, Trays, and Other Solid Forms	24_P43P	Means solid items that are marked and identified as polystyrene (#6) used for single-use plastic food service ware or single-use packaging. Excludes foamed/expanded polystyrene.	Clamshell to-go containers; To-go soup containers; Plates; Cups

Count	Class	Type	Form	Combined CMC Code	Sorting Rule	Examples
62	Plastic	PS (#6)	Flexible and Film Items	24_P29P	Means flexible or film single-use plastic food service ware and single-use packaging items that are marked and identified as PS (#6). Excludes foamed polystyrene flexible and film items.	Sheets for shipping or packaging
63	Plastic	Plastics and Polymers Designed for Compostability	Rigid Items	24_P44P	Means a rigid plastic single-use packaging and food service ware item that is designed and marked for compostability.	To-go containers; Cups; Plates; Bowls; Utensils; Egg flats
64	Plastic	Plastics and Polymers Designed for Compost-ability	Flexible and Film Items	24_P45P	Means a flexible plastic or film single-use packaging and food service ware item that is designed and marked for compostability.	Shipping pouches; Flexible food packaging; Compostable take-out bags
65	Plastic	Multi-Material Laminate	Pouches and Envelopes	24_P46P	Means pouches and envelopes composed of multiple laminated layers of plastic and, potentially, other materials.	Pouches for: Shipping; Food; Beverages; Personal care products; Mailing envelopes

Count	Class	Type	Form	Combined CMC Code	Sorting Rule	Examples
66	Plastic	Multi-Material Laminate	Other Forms	24_P33P	Means any multi-material laminate item that does not fit into the other category and is used for single-use packaging and single-use plastic food service ware.	Metalized wrappers
67	Plastic	Other/ Mixed Plastics	Textiles (non-organic/synthetic)	24_P34P	Means all fabric or textile single-use packaging and single-use plastic food service ware items that are made of any type of synthetic fiber or are a mixture of synthetic and non-synthetic fibers. Excludes bags or other items made of textiles that are not single use.	Woven plastic rice bags; Packing material made of scrap fabric; Ribbon used for packaging; Fabric bags
68	Plastic	Other/Mixed Plastics	Rigid Items	24_P35P	Means rigid material that is made of plastic other than resins #1-6, easily identified as compostable, or are otherwise unidentifiable by resin.	Bottles; Jugs; Jars; Food containers; Polyurethane blocks; Synthetic rubber stoppers

Count	Class	Type	Form	Combined CMC Code	Sorting Rule	Examples
69	Plastic	Other/Mixed Plastics	Flexible and Film Items	24_P36P	Means flexible or film plastic items that are made of plastics other than resins #1-6, easily identified as compostable, or otherwise unidentifiable by resin.	Plastic wrap; Food pouches; Soap bladders; Polyurethane foam sheets
70	Plastic	Plastic	Potentially Reusable Packaging and Food Service Ware	Potential Reuse	Means packaging and food service ware composed of a durable product intended for multiple uses. Item is washable between uses. Excludes packaging and food service ware items intended for single use but reused incidentally.	Dishes; Utensils; Durable melamine; Reusable shipping crates; Plastic pallets
71	Plastic	Plastic	Small – Two or more sides measuring 2” or less	24_P47P	Means any plastic less than 2 inches such that it will pass through a screen with a 2-inch mesh.	Packing peanuts; Caps and lids; Pizza savers; Condiment packets; Straws; Coffee stirrers; Twist ties; Bread clips/tabs; Synthetic rubber bands

Count	Class	Type	Form	Combined CMC Code	Sorting Rule	Examples
72	Plastic	Plastic	Remainder/Composite Plastic	n/a	Means plastic that cannot be put in any other type. Includes CRV beverage containers.	Plastic toys; CRV Beverage containers; PVC pipes; Agricultural film; Grocery/produce bags; Trash bags
73	Wood and Other Organic Materials	Wood	All Untreated Forms	24_WO1N/P	Means single-use packaging and single-use plastic food service ware items made of unpainted and untreated wood.	Crates; Wine boxes; Pallets; Tea boxes
74	Wood and Other Organic Materials	Wood	All Treated or Painted Forms	24_WO2N/P	Means wood that has been treated with a chemical preservative, like paint or varnish, to protect it from its environment, including insects, microorganisms, fungi, etc.	Thermoformed or thermoglued wooden food packaging; Wooden cheese boxes

Count	Class	Type	Form	Combined CMC Code	Sorting Rule	Examples
75	Wood and Other Organic Materials	Other/Mixed Organic	Textiles	24_WO3N/P	Means all fabric or textile single-use packaging and single-use plastic food service ware items that are made of any type of non-synthetic fibers, such as cotton, hemp, linen, and jute.	Cloth (cotton) bags that sheets are sold in; Ribbon
76	Wood and Other Organic Materials	Other/Mixed Organic	Other Forms	24_WO4N/P	Means single-use packaging and plastic single-use food service ware made of non-synthetic material that does not fall into any other category.	Mushroom packaging; Algal packaging (untreated); Bamboo packaging
77	Wood and Other Organic Materials	Other/Mixed Organic	Food Discarded in Original Packaging or Food Service Ware	Mixture	Means food intended for human consumption that was discarded in opened or unopened original packaging from the manufacturer, or in single-use food service ware from a food service establishment, such as takeout containers. Does not include beverage containers that display the CRV indication.	Box of lasagna; Packaged meats; Wrapped/boxed sandwiches; Canned foods; Fruit cups; Pudding cups; Frozen meals; Drinks in non-CRV bottles

Count	Class	Type	Form	Combined CMC Code	Sorting Rule	Examples
78	Wood and Other Organic Materials	Other/Mixed Organic	Potentially Reusable Packaging and Food Service Ware	Potential Reuse	Means packaging or food service ware composed of a durable product intended for multiple uses. Item is washable between uses. Excludes packaging and food service ware items intended for single use but reused incidentally.	Dishes; Utensils
79	Wood and Other Organic Materials	Wood and Other Organic	Small – Two or more sides measuring 2” or less	24_WO6N/P	Means any wood or organic-based packaging less than 2 inches such that it will pass through a screen with a 2-inch mesh.	Cork; Wooden lids; Twine
80	Wood and Other Organic Materials	Other/Mixed Organic	Remainder/Composite Organic	n/a	Means organic material that cannot be put in any other category.	Food discarded without original packaging or food service ware; Yard waste; Hair; Small wood products; Sawdust; Agriculture crop residues; Animal carcasses

Count	Class	Type	Form	Combined CMC Code	Sorting Rule	Examples
81	Miscellaneous	Miscellaneous	Non-Food Discarded in Original Packaging	Mixture	Means any non-food item that was discarded in opened or unopened original packaging.	Personal care products in bottles; Nail polish in bottles; Pet food in cans; Partially used candles; Boxes of tissues
82	Miscellaneous	Miscellaneous	Remainder Miscellaneous	n/a	Means materials that do not belong in any other category. Includes Inerts and Others, HHW, E-Waste, Special Waste, and Miscellaneous	Concrete; Masonry; Drywall; Roofing; Carpet; Rock, Sand, Soil; Architectural paint; Batteries; Pharmaceuticals; Tires; Mattresses and foundations; Furniture
83	Miscellaneous	Miscellaneous	Mixed Residue	n/a	Means material (including 2-inch-minus materials) that cannot be put in any other type or category. Includes mixed residue and materials smaller than two inches that cannot be further sorted.	Non-organic scraps; Rocks; Grit

Additional Sorting Guidance

In addition to the guidance provided in the sorting list, additional information was provided to contractor staff to ensure proper sorting. The sorting categories were intended to apply to each detachable item of covered material individually (e.g., a cup and a lid would be categorized independently). If detachable items were discarded together and were empty (e.g., a cup with a lid that is empty), they were sorted separately unless doing so was a potential safety hazard. If detachable items were discarded together but contained any liquid, food, or other contents, sorters were not expected to detach the items to sort separately.

Dominance

When an item was composed of materials of different classes or types that were not readily separable, such as paper coated with plastic, the sorter estimated which material—in both material class and type—contributed most to the overall weight. The item was then sorted into the sorting category that accounted for most of the weight.

Covered Material Discarded with Food or Goods Inside

Covered material that was discarded with the good still inside was sorted into one of two categories. If original single-use packaging (whether opened or unopened) or single-use plastic food service ware was disposed of with food inside, it was sorted into the Food Discarded in Original Packaging or Food Service Ware category. If original single-use packaging (whether opened or unopened) was disposed of with some or all of the good still inside, the item was sorted into the Non-Food Discarded in Original Packaging category.

Special Cases for Sorting

Additional guidance was provided to contractor staff for the groups of material identified and described in this section.

California Redemption Value (CRV)

Beverage containers covered under the Beverage Container Recycling Program, or displaying the CRV indication, were sorted into the remainder material category appropriate to that material class (e.g., Remainder/Composite Glass, Remainder/Composite Metal, Remainder/Composite Paper, or Remainder/Composite Plastic).

Bags

Bags, such as grocery bags, provided at the point of sale by retailers (i.e., a store other than a food service establishment) were not sorted into categories of covered material. Similarly, bags that become associated with goods only after they arrive at a retail location were not sorted into categories of covered material. These items were sorted into one of the Remainder/Composite categories, as applicable.

Medical

Primary, secondary, and tertiary packaging associated with medical products and products defined as devices or prescription drugs; drugs used for animal medicines; animal drugs, biologics, parasiticides, medical devices, or diagnostics used to treat or administered to animals; infant formula; medical food; and fortified oral nutritional supplements used for persons who require supplemental or sole-source nutrition were

not sorted into categories for covered material. These items were sorted into one of the Remainder/Composite categories, as applicable.

Hazardous

Primary, secondary, and tertiary packaging associated with packaging used to contain pesticides; plastic packaging containers that are used to contain or ship products that are classified for transportation as dangerous goods or hazardous materials; and packaging used to contain hazardous or flammable products classified by the Occupational Safety and Health Administration (OSHA) were not sorted into categories for covered material. These items were sorted into one of the Remainder/Composite categories, as applicable.

Small Material Measuring 2 inches or Less on Two or More Sides (Single-Use Packaging and Plastic Food Service Ware)

Each material class has a sorting category specific to covered material for small items. Materials were sifted through a 2-inch screen, with materials not falling through the screen being hand-sorted. Whenever safe to do so, items that fell through the screen but were easily identified as covered material were sorted into categories for small covered material.

Most materials that fell through the 2-inch screen were not further sorted but designated into the Miscellaneous Mixed Residue category. Small or broken covered material items that were sorted into Mixed Residue are not captured in the estimation of covered materials reaching landfills.

Remainder/ Composite Category Quality Control Sort

For selected samples, CalRecycle staff conducted quality control sorting on the Remainder/Composite category of each material class after contractor staff completed their sort. The remainder material categories subjected to the CalRecycle quality control sort can be observed as each line item in the Quality Control (QC) Material Sorting Categories column found in Table A2. Quality Control Sort.

CalRecycle staff hand-sorted material on top of a metal-wired screen with 2-square-inch gaps to allow for small items to fall through. Staff hand-sorted material into many material types, including sorting categories for covered material by material class. The CalRecycle quality control sort captured covered material that was not identified in the sort conducted by contractor staff and served as one mode of quality control. After sorting, the bins were then weighed, photographed, and recorded into the database. The summed weight of the bins was compared to the weight of the material prior to sorting to ensure that all material had been weighed. The sample was accepted if the initial weight and the sum of the weights had a discrepancy of less than 5%.

During data analysis, the covered material weights were integrated back into the respective covered material class data.

Table A2. Quality Control Sort

This table provides a summary of the quality control (QC) sort performed by CalRecycle staff. The first column has the material sorting categories by count enumeration and category name. The second column provides a count of the total number of samples analyzed for the study. The third column provides a count for the total number of samples analyzed and subject to quality control for each row item. The fourth column provides a percentage of total samples that were subject to quality control sorting.

Quality Control (QC) Material Sorting Categories	Total Study Sample Count	Quality Control Sample Count	Percent of Study Samples with QC Sort
5. Remainder/Composite Glass	313	95	30.4%
9. Remainder/Composite Ceramic	313	20	6.4%
22. Remainder/Composite Metal	313	121	38.7%
35. Other/Mixed Paper Remainder/Composite Mixed Paper	313	123	39.3%
72. Remainder/Composite Plastic	313	127	40.6%
77. Other/Mixed Organic Food Discarded in Original Packaging or Food Service Ware	313	107	34.2%
80. Other/Mixed Organic Remainder/Composite Organic	313	118	37.7%
82. Remainder Miscellaneous	313	124	39.6%

Table A3. Additional Analyses Performed by Contractor Staff

This table provides a summary of additional analyses performed, by sorting category, after contractor staff sorted the material (see first column). The second column provides a description of the type of additional analyses performed, which was either: (1) Resins – additional analysis by contractor staff to identify plastic resins that were not identifiable in the field; or (2) Depackaging – additional analysis by contractor staff to depackage covered material discarded with food or goods inside. The fourth column provides a count for the total number of items analyzed for each row item.

Contractor Conducted Additional Analysis – sorting categories	Analysis Type	Item Count
68. Other/Mixed Plastics Rigid Items (CM)	Resin	527
69. Other/Mixed Plastics Flexible and Film Items (CM)	Resin	563
77. Other/Mixed Organic Food Discarded in Original Packaging or Food Service Ware	Depackaging	85
81. Non-Food Discarded in Original Packaging	Depackaging	78

Section 1.2: Facility Selection and Sample Allocation

Prior to the start of fieldwork, CalRecycle pre-selected 15 landfill facilities distributed across California to participate in the study from a list of eligible sites (see [Request for Proposal, Secondary – DRR24046](#), for a list of eligible facilities). The list of eligible sites was created and prioritized based on the largest landfills, by volume, that received material from the four waste-generating sectors (sector or sectors). Cascadia reviewed

all facility data collected by CalRecycle staff during the initial facility recruitment, confirmed each facility's willingness to participate in the study, and confirmed final logistics. CalRecycle staff selected additional sites from the list of eligible sites as replacements or adjustments to the initially selected sites were needed. Sampling proceeded at 14 of the 15 initially selected sites and at two additional eligible sites, for a total of 16 sites. A list of all the sampling sites can be found in the main report, Table 1.

Section 1.3: Field Sampling Schedule

Cascadia conducted the characterization study over two separate field sampling periods. Period one consisted of 15 days of fieldwork at seven different facilities. Period two consisted of 19 days of fieldwork at nine different facilities. Most fieldwork days were conducted Monday through Friday. Over the two sampling periods, contractor staff collected and characterized 313 samples across 34 field days from 16 different landfill facilities located throughout the state. Contractor staff conducted the fieldwork over multiple (2-3) days at each facility. The sampling calendars with the fieldwork dates and facilities are shown in Table A4.

Table A4. Field Sampling Calendar

Facility Name	Fieldwork Dates, 2025
<i>Sampling Period 1</i>	
Kiefer Landfill	February 24-26
Forward Landfill	February 27-28
Antelope Valley Recycling & Disposal Facility	March 3-4
Simi Valley Landfill & Recycling Center	March 5-6
Olinda Alpha Sanitary Landfill	March 7 & 10
El Sobrante Landfill	March 11 & 12
Badlands Landfill	March 13-14
<i>Sampling Period 2</i>	
Otay Landfill	March 25-26
West Miramar Sanitary Landfill	March 28
Johnson Canyon Sanitary Landfill	March 31-April 1
Monterey Peninsula Landfill	April 2-3
Corinda Los Trancos Landfill (Ox Mtn)	April 4-5 & 7
Altamont Landfill & Resource Recovery	April 8-9
Highway 59 Landfill	April 10-11
Potrero Hills Landfill	April 14-16
Recology Ostrom Road Landfill	April 17-18

Section 1.4: Sample Allocations

Table A5 shows the distribution of samples by facility and sector.

Contractor staff sampled an average of 10 loads per day in sampling period one and 8.5 loads per day in sampling period two. Within the commercial sector, samples were distributed approximately evenly between packer trucks and drop boxes. Similarly, the

self-haul sector was distributed approximately evenly between passenger vehicles and other large vehicles.

Table A5. Distribution of Samples per Sector and Sampling Period by Facility

Facility Name	Residential	Commercial	Self-Haul	Mix	Total
Kiefer Landfill	8	12	8	2	30
Forward Landfill	5	9	4	2	20
Antelope Valley Recycling & Disposal Facility	5	7	4	2	18
Simi Valley Landfill & Recycling Center	5	10	3	2	20
Olinda Alpha Sanitary Landfill	5	7	3	2	17
El Sobrante Landfill	0	11	6	2	19
Badlands Landfill	8	13	3	2	26
<i>Field Season 1 Total</i>	<i>36</i>	<i>69</i>	<i>31</i>	<i>14</i>	<i>150</i>
Otay Landfill	4	7	4	2	17
West Miramar landfill	4	5	1	0	10
Johnson Canyon Sanitary Landfill	1	3	2	2	8
Monterey Peninsula Landfill	5	7	4	2	18
Corinda Los Trancos Landfill	5	11	4	2	22
Altamont Landfill & Resource Recovery	6	8	4	2	20
Highway 59 Landfill	6	10	4	2	22
Potrero Hills Landfill	8	11	8	2	29
Ostrom Road Landfill	8	9	0	0	17
<i>Field Season 2 Total</i>	<i>47</i>	<i>71</i>	<i>31</i>	<i>14</i>	<i>163</i>
Study Total	83	140	62	28	313

Section 1.5: Vehicle Surveys

Contractor staff were posted at the facility entrance gate and administered surveys to vehicle drivers. Vehicle survey data were used to estimate the fraction of the overall waste sector contributed by each waste sector at each participating facility and to select the specific vehicles to be sampled.

Contractor staff collected information only from trucks with loads from the waste stream destined for final deposition at the landfill. Contractor staff did not record any loads that were excluded from this study. Contractor staff gathered the following information through the interview process:

- Date of collection
- Name of the sampling site
- Local weather conditions
- Any notes or unusual circumstances

- Sector of waste (commercial, residential, mixed waste, self-haul)
- Jurisdiction (city or unincorporated county area)
- Vehicle type: Packer (rear/front/side loader), Loose Box (roll off), Compact Box (roll off), Self-Haul (SH) Small (car, SUV, pickup), SH Large (box truck, cargo van, truck with trailer, junk hauler), Semi/Transfer Trailer
- For each load, the estimated percentage of single-family, multi-family, non-residential, self-haul, and unknown mixed waste
- For each self-haul load:
 - Type: Residential, Commercial
 - Subtype: Construction & Demolition (C&D), Roofing, Landscaping, Other
 - Type of construction project: New Construction, Remodel, Demo, Roofing, Other
- For each transfer truck, the name of the originating facility
 - Load weight (net weight was determined directly through surveying or through coordination with the facility to obtain net weights for the selected loads)

Contractor staff also selected vehicles for sampling using a random, systematic process as vehicles arrived at the facility. For each sector per facility, a vehicle sampling frequency was determined using the following logic:

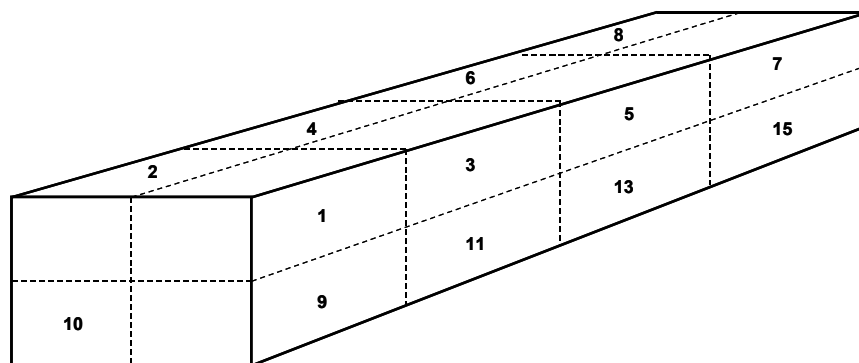
1. For each sampling day and each sector, the expected number, “L,” of arriving loads was estimated using information provided by the facilities during coordination calls. The number L was then reduced by one-fifth (producing $0.8 * L$) to ensure that the targeted number of loads for each sector was selected on each sampling day, even if traffic was lighter than expected.
2. Next, the interval n was determined by dividing the estimated reduced traffic load ($0.8 * L$) by r , which represents the number of samples needed for a sector.

If a vehicle was eligible and was the correct n^{th} vehicle, contractor staff placed a *Sample Placard* printed with a unique sample ID number on the vehicle’s windshield or dashboard to identify it as a vehicle intended for sampling.

Section 1.6: Sample Collection

Upon arrival in the sampling area, drivers of selected loads were directed to tip their loads. Individual 200-pound sample(s) of waste material were then captured using a random selection protocol designed to select representative samples for each sector. The contractor superimposed an imaginary 16-cell grid (see Figure B1) over the dumped material. A randomly generated number (1-16), pre-printed on the *Sample Placard* and given to each selected vehicle, identified which cell to extract a sample from. *Sample Placards* for transfer trailers had three random cells printed on them, one for each of the subsamples used to create the sample.

Figure B1: Diagram of a 16-cell grid superimposed on a dumped load to randomly select a sample.



For transfer trailers, the equipment operator collected one small scoop (between 65 and 70 pounds each) from three different areas of the load and combined the small scoops on a tarp to create one sample weighing at least 200 pounds. The process was repeated in some cases to create a second sample from the transfer trailer.

If a self-haul load weighed less than 200 pounds, the survey selected additional loads from the same subsector until the total weight collected exceeded 200 pounds. The combined materials were then counted as one sample.

If the vehicle traffic on the day of fieldwork at a facility did not match the information collected by CalRecycle during recruitment, the contractor collected more than one sample per vehicle. For example, if a location reported receiving 10 residential trucks per day, but on the day of fieldwork at that facility they received only two residential loads, the contractor collected multiple samples from each of those two loads to ensure the daily sampling target was achieved.

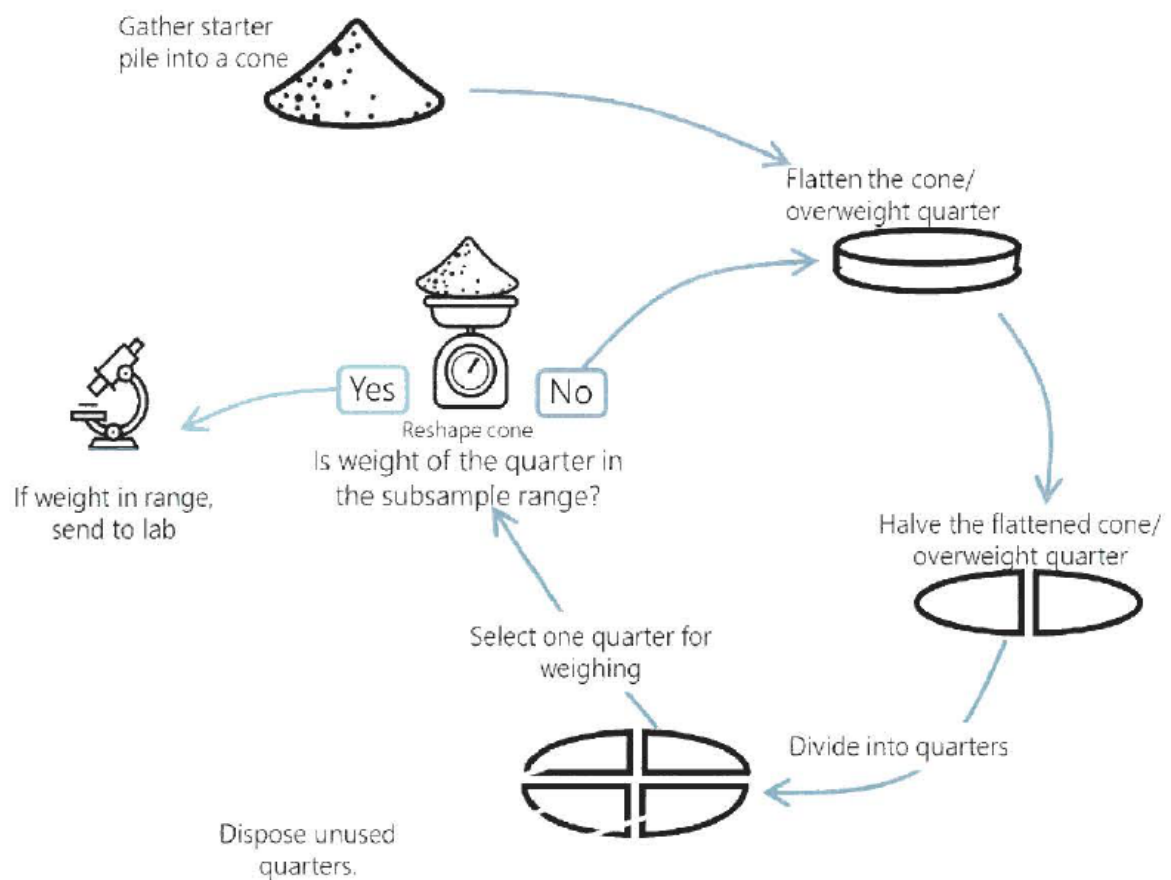
Section 1.7: Sample Characterization

All samples were hand-sorted into the 83 material types using a metal-wired screen with 2-square-inch gaps to allow for small items to fall through. These small items were then categorized under the “mixed residue” sorting category unless small, covered material could safely and practicably be sorted by material class. After each sample was completely sorted, contractor staff weighed the material in each sorting category using a scale accurate to within 0.1 pounds. The sample weight consisted of the sum of the weights of all the sorted components. Contractor staff recorded all weights in decimal pounds.

Characterizing hard-to-identify resins:

For characterizing hard-to-identify resins, the sample collection is described in the main report (Section: Additional Analysis Performed by Contractor Staff). For further illustration, the cone and quarter method is illustrated in Figure B2.

Figure B2: Excerpt from Contractor's Sampling Plan - Cone and Quarter Method



Section 2: Data Analysis

This section contains tables representing additional data analysis of collected data.

Analysis: CMC Percentage Composition

Table A6: Percentage Composition of Each Material Type Within Covered Material Classes

Data in this table are calculated from the sort material composition to provide the estimated percentage weight of each combined CMC code within each material class. The data in this table are used for additional analyses of the Remainder/Composite quality control sort and the depackaging analysis. The column descriptions are:

- Column 1: Material Class: Material class analyzed.
- Column 2: Combined CMC Code: The code of the combined covered material category used in further analyses.
- Column 3: Percentage weight of CMC in Class: The mean percentage weight of that combined covered material category within the material class, across all samples in the sort.

Material Class	Combined CMC Code	Percentage weight of CMC in Class
Ceramic	24_C1N/P	13.1%
Ceramic	24_C2N/P	86.9%
Glass	24_G1N/P	94.9%
Glass	24_G2N/P	1.5%
Glass	24_G3N/P	3.5%
Metal	24_M1N/P	3.2%
Metal	24_M10N/P	3.5%
Metal	24_M12N/P	0.7%
Metal	24_M2N/P	15.6%
Metal	24_M3N/P	8.2%
Metal	24_M4P	1.6%
Metal	24_M5N/P	4.8%
Metal	24_M6N/P	42.5%
Metal	24_M7P	6.1%
Metal	24_M8N/P	12.4%
Metal	24_M9N/P	1.3%
Paper/Fiber	24_PF1N/P	6.3%
Paper/Fiber	24_PF10N/P	14.2%
Paper/Fiber	24_PF11N/P	0.2%
Paper/Fiber	24_PF12N/P	2.6%
Paper/Fiber	24_PF14N/P	3.5%
Paper/Fiber	24_PF15P	1.1%
Paper/Fiber	24_PF16N/P	0.1%

Material Class	Combined CMC Code	Percentage weight of CMC in Class
Paper/Fiber	24 PF5P	1.5%
Paper/Fiber	24 PF7P	15.9%
Paper/Fiber	24 PF8N/P	1.1%
Paper/Fiber	24 PF9N/P	53.5%
Plastic	24 P1P	2.7%
Plastic	24 P10P	1.3%
Plastic	24 P11P	0.2%
Plastic	24 P12P	0.1%
Plastic	24 P13P	0.0%
Plastic	24 P14P	0.2%
Plastic	24 P15P	7.2%
Plastic	24 P16P	8.8%
Plastic	24 P17P	0.2%
Plastic	24 P19P	0.5%
Plastic	24 P2P	0.7%
Plastic	24 P20P	1.1%
Plastic	24 P21P	0.2%
Plastic	24 P22P	0.5%
Plastic	24 P23P	2.2%
Plastic	24 P27P	0.5%
Plastic	24 P29P	0.1%
Plastic	24 P33P	2.4%
Plastic	24 P34P	0.3%
Plastic	24 P35P	4.4%
Plastic	24 P36P	26.2%
Plastic	24 P38P	7.1%
Plastic	24 P39P	0.5%
Plastic	24 P40P	1.8%
Plastic	24 P41P	13.9%
Plastic	24 P42P	2.4%
Plastic	24 P43P	2.3%
Plastic	24 P44P	0.2%
Plastic	24 P45P	0.2%
Plastic	24 P46P	1.6%
Plastic	24 P47P	1.2%
Plastic	24 P5P	0.0%
Plastic	24 P6P	3.5%
Plastic	24 P7P	2.9%
Plastic	24 P8P	2.6%

Material Class	Combined CMC Code	Percentage weight of CMC in Class
Wood and Other Organic Materials	24_WO1N/P	75.8%
Wood and Other Organic Materials	24_WO2N/P	23.6%
Wood and Other Organic Materials	24_WO3N/P	0.1%
Wood and Other Organic Materials	24_WO4N/P	0.3%
Wood and Other Organic Materials	24_WO6N/P	0.1%

Additional Analysis: Composition Estimates

Table A7: Composition Estimates for Material Types Within Sectors

This table presents composition estimates based on calculations across the sort samples within each sector. The first column is the combined CMC code or non-CMC identifier for analysis. Rows with n/a in this column are non-CMC categories included in the material characterization study. The second column is the sector of origin for the characterized samples. Columns three through five provide percent composition estimates by weight for each covered material group within each sector. Column three is mean composition, column four is minimum composition, and column five is maximum composition. Column six describes the percentage of samples with the associated material observed. Column seven describes the material class, type, and form for the CMC grouping.

Combined CMC Code	Sector	Mean Percent Composition (by weight)	Minimum Percent Composition (by weight)	Maximum Percent Composition (by weight)	Percent of Samples with Material Observed	Material Class, Type, Form
24_C1N/P	Franchised Commercial	0.0%	0.0%	0.0%	0.0%	Ceramic - Ceramic - All Forms
24_C1N/P	Franchised Residential	0.0%	0.0%	0.7%	3.6%	Ceramic - Ceramic - All Forms
24_C1N/P	Mixed	0.0%	0.0%	0.1%	3.6%	Ceramic - Ceramic - All Forms
24_C1N/P	Self-haul	0.0%	0.0%	0.0%	0.0%	Ceramic - Ceramic - All Forms
24_C2N/P	Franchised Commercial	0.0%	0.0%	0.4%	2.9%	Ceramic - Ceramic - Small - Two or more sides measuring 2" or less
24_C2N/P	Franchised Residential	0.0%	0.0%	0.4%	6.0%	Ceramic - Ceramic - Small - Two or more sides measuring 2" or less
24_C2N/P	Mixed	0.0%	0.0%	0.2%	3.6%	Ceramic - Ceramic - Small - Two or more sides measuring 2" or less
24_C2N/P	Self-haul	0.1%	0.0%	8.1%	1.6%	Ceramic - Ceramic - Small - Two or more sides measuring 2" or less
24_G1N/P	Franchised Commercial	0.2%	0.0%	5.4%	35.7%	Glass - Glass - Bottles and Jars

Combined CMC Code	Sector	Mean Percent Composition (by weight)	Minimum Percent Composition (by weight)	Maximum Percent Composition (by weight)	Percent of Samples with Material Observed	Material Class, Type, Form
24_G1N/P	Franchised Residential	0.7%	0.0%	3.5%	91.6%	Glass - Glass - Bottles and Jars
24_G1N/P	Mixed	0.3%	0.0%	1.9%	53.6%	Glass - Glass - Bottles and Jars
24_G1N/P	Self-haul	0.0%	0.0%	0.2%	1.6%	Glass - Glass - Bottles and Jars
24_G2N/P	Franchised Commercial	0.0%	0.0%	0.0%	7.1%	Glass - Glass - Other Forms
24_G2N/P	Franchised Residential	0.0%	0.0%	0.8%	34.9%	Glass - Glass - Other Forms
24_G2N/P	Mixed	0.0%	0.0%	0.0%	25.0%	Glass - Glass - Other Forms
24_G2N/P	Self-haul	0.0%	0.0%	0.0%	0.0%	Glass - Glass - Other Forms
24_G3N/P	Franchised Commercial	0.0%	0.0%	0.3%	15.0%	Glass - Glass - Small - Two or more sides measuring 2" or less
24_G3N/P	Franchised Residential	0.0%	0.0%	0.3%	50.6%	Glass - Glass - Small - Two or more sides measuring 2" or less
24_G3N/P	Mixed	0.0%	0.0%	0.0%	28.6%	Glass - Glass - Small - Two or more sides measuring 2" or less
24_G3N/P	Self-haul	0.0%	0.0%	0.0%	1.6%	Glass - Glass - Small - Two or more sides measuring 2" or less
24_M1N/P	Franchised Commercial	0.0%	0.0%	0.7%	27.1%	Metal - Aluminum - Non-aerosol container
24_M1N/P	Franchised Residential	0.1%	0.0%	0.5%	86.7%	Metal - Aluminum - Non-aerosol container
24_M1N/P	Mixed	0.0%	0.0%	0.2%	57.1%	Metal - Aluminum - Non-aerosol container
24_M1N/P	Self-haul	0.0%	0.0%	0.0%	3.2%	Metal - Aluminum - Non-aerosol container

Combined CMC Code	Sector	Mean Percent Composition (by weight)	Minimum Percent Composition (by weight)	Maximum Percent Composition (by weight)	Percent of Samples with Material Observed	Material Class, Type, Form
24_M10N/P	Franchised Commercial	0.0%	0.0%	3.2%	23.6%	Metal - Other Ferrous - All Forms
24_M10N/P	Franchised Residential	0.0%	0.0%	0.4%	48.2%	Metal - Other Ferrous - All Forms
24_M10N/P	Mixed	0.0%	0.0%	0.1%	50.0%	Metal - Other Ferrous - All Forms
24_M10N/P	Self-haul	0.0%	0.0%	0.3%	4.8%	Metal - Other Ferrous - All Forms
24_M12N/P	Franchised Commercial	0.0%	0.0%	0.1%	30.0%	Metal - Metal - Small - Two or more sides measuring 2" or less
24_M12N/P	Franchised Residential	0.0%	0.0%	0.1%	69.9%	Metal - Metal - Small - Two or more sides measuring 2" or less
24_M12N/P	Mixed	0.0%	0.0%	0.0%	64.3%	Metal - Metal - Small - Two or more sides measuring 2" or less
24_M12N/P	Self-haul	0.0%	0.0%	0.0%	6.5%	Metal - Metal - Small - Two or more sides measuring 2" or less
24_M2N/P	Franchised Commercial	0.1%	0.0%	0.9%	60.0%	Metal - Aluminum - Foil sheets
24_M2N/P	Franchised Residential	0.2%	0.0%	0.6%	98.8%	Metal - Aluminum - Foil sheets
24_M2N/P	Mixed	0.1%	0.0%	0.7%	89.3%	Metal - Aluminum - Foil sheets
24_M2N/P	Self-haul	0.0%	0.0%	0.0%	9.7%	Metal - Aluminum - Foil sheets
24_M3N/P	Franchised Commercial	0.0%	0.0%	0.7%	38.6%	Metal - Aluminum - Foil Molded Containers
24_M3N/P	Franchised Residential	0.1%	0.0%	1.7%	85.5%	Metal - Aluminum - Foil Molded Containers
24_M3N/P	Mixed	0.0%	0.0%	0.1%	67.9%	Metal - Aluminum - Foil Molded Containers

Combined CMC Code	Sector	Mean Percent Composition (by weight)	Minimum Percent Composition (by weight)	Maximum Percent Composition (by weight)	Percent of Samples with Material Observed	Material Class, Type, Form
24_M3N/P	Self-haul	0.0%	0.0%	0.1%	3.2%	Metal - Aluminum - Foil Molded Containers
24_M4P	Franchised Commercial	0.0%	0.0%	0.1%	19.3%	Metal - Aluminum - Aerosol can
24_M4P	Franchised Residential	0.0%	0.0%	0.2%	60.2%	Metal - Aluminum - Aerosol can
24_M4P	Mixed	0.0%	0.0%	0.1%	60.7%	Metal - Aluminum - Aerosol can
24_M4P	Self-haul	0.0%	0.0%	0.0%	3.2%	Metal - Aluminum - Aerosol can
24_M5N/P	Franchised Commercial	0.1%	0.0%	5.5%	23.6%	Metal - Aluminum - Other Forms
24_M5N/P	Franchised Residential	0.0%	0.0%	0.3%	61.4%	Metal - Aluminum - Other Forms
24_M5N/P	Mixed	0.0%	0.0%	0.4%	60.7%	Metal - Aluminum - Other Forms
24_M5N/P	Self-haul	0.0%	0.0%	0.0%	3.2%	Metal - Aluminum - Other Forms
24_M6N/P	Franchised Commercial	0.3%	0.0%	5.6%	47.1%	Metal - Tin/Steel/Bimetal - Non-aerosol container
24_M6N/P	Franchised Residential	0.6%	0.0%	2.0%	96.4%	Metal - Tin/Steel/Bimetal - Non-aerosol container
24_M6N/P	Mixed	0.3%	0.0%	1.3%	82.1%	Metal - Tin/Steel/Bimetal - Non-aerosol container
24_M6N/P	Self-haul	0.0%	0.0%	0.1%	8.1%	Metal - Tin/Steel/Bimetal - Non-aerosol container
24_M7P	Franchised Commercial	0.0%	0.0%	0.8%	30.0%	Metal - Tin/Steel/Bimetal - Aerosol can
24_M7P	Franchised Residential	0.1%	0.0%	0.5%	69.9%	Metal - Tin/Steel/Bimetal - Aerosol can

Combined CMC Code	Sector	Mean Percent Composition (by weight)	Minimum Percent Composition (by weight)	Maximum Percent Composition (by weight)	Percent of Samples with Material Observed	Material Class, Type, Form
24_M7P	Mixed	0.1%	0.0%	0.4%	60.7%	Metal - Tin/Steel/Bimetal - Aerosol can
24_M7P	Self-haul	0.0%	0.0%	0.3%	4.8%	Metal - Tin/Steel/Bimetal - Aerosol can
24_M8N/P	Franchised Commercial	0.1%	0.0%	10.1%	32.1%	Metal - Tin/Steel/Bimetal - Other Forms
24_M8N/P	Franchised Residential	0.1%	0.0%	1.0%	75.9%	Metal - Tin/Steel/Bimetal - Other Forms
24_M8N/P	Mixed	0.1%	0.0%	0.8%	60.7%	Metal - Tin/Steel/Bimetal - Other Forms
24_M8N/P	Self-haul	0.0%	0.0%	0.0%	6.5%	Metal - Tin/Steel/Bimetal - Other Forms
24_M9N/P	Franchised Commercial	0.0%	0.0%	1.4%	18.6%	Metal - Other Nonferrous - All Forms
24_M9N/P	Franchised Residential	0.0%	0.0%	0.6%	42.2%	Metal - Other Nonferrous - All Forms
24_M9N/P	Mixed	0.0%	0.0%	0.1%	50.0%	Metal - Other Nonferrous - All Forms
24_M9N/P	Self-haul	0.0%	0.0%	0.0%	3.2%	Metal - Other Nonferrous - All Forms
24_P1P	Franchised Commercial	0.1%	0.0%	1.2%	56.4%	Plastic - PET (#1) - Bottles, Jugs, and Jars (Clear/Natural)
24_P1P	Franchised Residential	0.3%	0.0%	1.2%	96.4%	Plastic - PET (#1) - Bottles, Jugs, and Jars (Clear/Natural)
24_P1P	Mixed	0.1%	0.0%	0.7%	96.4%	Plastic - PET (#1) - Bottles, Jugs, and Jars (Clear/Natural)
24_P1P	Self-haul	0.0%	0.0%	0.4%	17.7%	Plastic - PET (#1) - Bottles, Jugs, and Jars (Clear/Natural)
24_P10P	Franchised Commercial	0.1%	0.0%	0.4%	61.4%	Plastic - HDPE (#2) - Flexible and Film Items

Combined CMC Code	Sector	Mean Percent Composition (by weight)	Minimum Percent Composition (by weight)	Maximum Percent Composition (by weight)	Percent of Samples with Material Observed	Material Class, Type, Form
24_P10P	Franchised Residential	0.2%	0.0%	0.5%	98.8%	Plastic - HDPE (#2) - Flexible and Film Items
24_P10P	Mixed	0.1%	0.0%	0.3%	96.4%	Plastic - HDPE (#2) - Flexible and Film Items
24_P10P	Self-haul	0.0%	0.0%	0.1%	19.4%	Plastic - HDPE (#2) - Flexible and Film Items
24_P11P	Franchised Commercial	0.0%	0.0%	0.5%	40.7%	Plastic - PVC (#3) - Rigid Items
24_P11P	Franchised Residential	0.0%	0.0%	0.3%	73.5%	Plastic - PVC (#3) - Rigid Items
24_P11P	Mixed	0.0%	0.0%	0.1%	89.3%	Plastic - PVC (#3) - Rigid Items
24_P11P	Self-haul	0.0%	0.0%	0.1%	17.7%	Plastic - PVC (#3) - Rigid Items
24_P12P	Franchised Commercial	0.0%	0.0%	0.7%	41.4%	Plastic - PVC (#3) - Flexible and Film Items
24_P12P	Franchised Residential	0.0%	0.0%	0.4%	73.5%	Plastic - PVC (#3) - Flexible and Film Items
24_P12P	Mixed	0.0%	0.0%	0.3%	89.3%	Plastic - PVC (#3) - Flexible and Film Items
24_P12P	Self-haul	0.0%	0.0%	0.0%	12.9%	Plastic - PVC (#3) - Flexible and Film Items
24_P13P	Franchised Commercial	0.0%	0.0%	0.1%	36.4%	Plastic - LDPE (#4) - Bottles, Jugs, and Jars
24_P13P	Franchised Residential	0.0%	0.0%	0.1%	63.9%	Plastic - LDPE (#4) - Bottles, Jugs, and Jars
24_P13P	Mixed	0.0%	0.0%	0.0%	89.3%	Plastic - LDPE (#4) - Bottles, Jugs, and Jars
24_P13P	Self-haul	0.0%	0.0%	0.0%	12.9%	Plastic - LDPE (#4) - Bottles, Jugs, and Jars

Combined CMC Code	Sector	Mean Percent Composition (by weight)	Minimum Percent Composition (by weight)	Maximum Percent Composition (by weight)	Percent of Samples with Material Observed	Material Class, Type, Form
24_P14P	Franchised Commercial	0.0%	0.0%	0.1%	45.0%	Plastic - LDPE (#4) - Other Rigid Items
24_P14P	Franchised Residential	0.0%	0.0%	0.2%	81.9%	Plastic - LDPE (#4) - Other Rigid Items
24_P14P	Mixed	0.0%	0.0%	0.1%	92.9%	Plastic - LDPE (#4) - Other Rigid Items
24_P14P	Self-haul	0.0%	0.0%	0.0%	12.9%	Plastic - LDPE (#4) - Other Rigid Items
24_P15P	Franchised Commercial	0.7%	0.0%	30.5%	66.4%	Plastic - LDPE (#4) - Clear Non-Bag Film
24_P15P	Franchised Residential	0.1%	0.0%	1.7%	95.2%	Plastic - LDPE (#4) - Clear Non-Bag Film
24_P15P	Mixed	0.9%	0.0%	8.4%	96.4%	Plastic - LDPE (#4) - Clear Non-Bag Film
24_P15P	Self-haul	0.0%	0.0%	0.8%	24.2%	Plastic - LDPE (#4) - Clear Non-Bag Film
24_P16P	Franchised Commercial	0.8%	0.0%	16.8%	70.7%	Plastic - LDPE (#4) - Other Flexible and Film Items
24_P16P	Franchised Residential	0.3%	0.0%	1.1%	98.8%	Plastic - LDPE (#4) - Other Flexible and Film Items
24_P16P	Mixed	0.9%	0.0%	12.8%	96.4%	Plastic - LDPE (#4) - Other Flexible and Film Items
24_P16P	Self-haul	0.0%	0.0%	0.9%	30.6%	Plastic - LDPE (#4) - Other Flexible and Film Items
24_P17P	Franchised Commercial	0.0%	0.0%	0.2%	39.3%	Plastic - PP (#5) - Bottles, Jugs, and Jars
24_P17P	Franchised Residential	0.0%	0.0%	0.4%	69.9%	Plastic - PP (#5) - Bottles, Jugs, and Jars

Combined CMC Code	Sector	Mean Percent Composition (by weight)	Minimum Percent Composition (by weight)	Maximum Percent Composition (by weight)	Percent of Samples with Material Observed	Material Class, Type, Form
24_P17P	Mixed	0.0%	0.0%	0.1%	89.3%	Plastic - PP (#5) - Bottles, Jugs, and Jars
24_P17P	Self-haul	0.0%	0.0%	0.0%	12.9%	Plastic - PP (#5) - Bottles, Jugs, and Jars
24_P19P	Franchised Commercial	0.0%	0.0%	0.8%	48.6%	Plastic - PP (#5) - Utensils
24_P19P	Franchised Residential	0.0%	0.0%	0.7%	79.5%	Plastic - PP (#5) - Utensils
24_P19P	Mixed	0.0%	0.0%	0.2%	89.3%	Plastic - PP (#5) - Utensils
24_P19P	Self-haul	0.0%	0.0%	0.0%	12.9%	Plastic - PP (#5) - Utensils
24_P2P	Franchised Commercial	0.0%	0.0%	0.3%	43.6%	Plastic - PET (#1) - Bottles, Jugs, and Jars (Pigmented/Color)
24_P2P	Franchised Residential	0.1%	0.0%	0.4%	88.0%	Plastic - PET (#1) - Bottles, Jugs, and Jars (Pigmented/Color)
24_P2P	Mixed	0.1%	0.0%	1.0%	92.9%	Plastic - PET (#1) - Bottles, Jugs, and Jars (Pigmented/Color)
24_P2P	Self-haul	0.0%	0.0%	0.0%	12.9%	Plastic - PET (#1) - Bottles, Jugs, and Jars (Pigmented/Color)
24_P20P	Franchised Commercial	0.1%	0.0%	2.6%	43.6%	Plastic - PP (#5) - Other Rigid Items
24_P20P	Franchised Residential	0.0%	0.0%	1.3%	78.3%	Plastic - PP (#5) - Other Rigid Items
24_P20P	Mixed	0.3%	0.0%	2.5%	89.3%	Plastic - PP (#5) - Other Rigid Items
24_P20P	Self-haul	0.0%	0.0%	0.0%	14.5%	Plastic - PP (#5) - Other Rigid Items
24_P21P	Franchised Commercial	0.0%	0.0%	3.1%	43.6%	Plastic - PP (#5) - Clear Non-Bag Film

Combined CMC Code	Sector	Mean Percent Composition (by weight)	Minimum Percent Composition (by weight)	Maximum Percent Composition (by weight)	Percent of Samples with Material Observed	Material Class, Type, Form
24_P21P	Franchised Residential	0.0%	0.0%	0.0%	62.7%	Plastic - PP (#5) - Clear Non-Bag Film
24_P21P	Mixed	0.0%	0.0%	0.2%	89.3%	Plastic - PP (#5) - Clear Non-Bag Film
24_P21P	Self-haul	0.0%	0.0%	0.0%	12.9%	Plastic - PP (#5) - Clear Non-Bag Film
24_P22P	Franchised Commercial	0.0%	0.0%	0.4%	41.4%	Plastic - PP (#5) - Other Flexible and Film Items
24_P22P	Franchised Residential	0.0%	0.0%	0.4%	83.1%	Plastic - PP (#5) - Other Flexible and Film Items
24_P22P	Mixed	0.1%	0.0%	3.5%	89.3%	Plastic - PP (#5) - Other Flexible and Film Items
24_P22P	Self-haul	0.0%	0.0%	0.0%	12.9%	Plastic - PP (#5) - Other Flexible and Film Items
24_P23P	Franchised Commercial	0.2%	0.0%	10.4%	60.7%	Plastic - PS (#6) - Expanded/Foamed Hinged Containers, Plates, Cups, Tubs, Trays, and Other Foamed Containers
24_P23P	Franchised Residential	0.2%	0.0%	0.7%	97.6%	Plastic - PS (#6) - Expanded/Foamed Hinged Containers, Plates, Cups, Tubs, Trays, and Other Foamed Containers

Combined CMC Code	Sector	Mean Percent Composition (by weight)	Minimum Percent Composition (by weight)	Maximum Percent Composition (by weight)	Percent of Samples with Material Observed	Material Class, Type, Form
24_P23P	Mixed	0.1%	0.0%	0.6%	96.4%	Plastic - PS (#6) - Expanded/Foamed Hinged Containers, Plates, Cups, Tubs, Trays, and Other Foamed Containers
24_P23P	Self-haul	0.0%	0.0%	0.1%	16.1%	Plastic - PS (#6) - Expanded/Foamed Hinged Containers, Plates, Cups, Tubs, Trays, and Other Foamed Containers
24_P27P	Franchised Commercial	0.0%	0.0%	0.9%	50.0%	Plastic - PS (#6) - Utensils
24_P27P	Franchised Residential	0.0%	0.0%	0.5%	80.7%	Plastic - PS (#6) - Utensils
24_P27P	Mixed	0.0%	0.0%	0.2%	89.3%	Plastic - PS (#6) - Utensils
24_P27P	Self-haul	0.0%	0.0%	0.1%	16.1%	Plastic - PS (#6) - Utensils
24_P29P	Franchised Commercial	0.0%	0.0%	0.6%	38.6%	Plastic - PS (#6) - Flexible and Film Items
24_P29P	Franchised Residential	0.0%	0.0%	0.0%	63.9%	Plastic - PS (#6) - Flexible and Film Items
24_P29P	Mixed	0.0%	0.0%	0.0%	89.3%	Plastic - PS (#6) - Flexible and Film Items
24_P29P	Self-haul	0.0%	0.0%	0.0%	14.5%	Plastic - PS (#6) - Flexible and Film Items
24_P33P	Franchised Commercial	0.1%	0.0%	0.9%	68.6%	Plastic - Multi-Material Laminate - Other Forms
24_P33P	Franchised Residential	0.3%	0.0%	1.2%	100.0%	Plastic - Multi-Material Laminate - Other Forms

Combined CMC Code	Sector	Mean Percent Composition (by weight)	Minimum Percent Composition (by weight)	Maximum Percent Composition (by weight)	Percent of Samples with Material Observed	Material Class, Type, Form
24_P33P	Mixed	0.1%	0.0%	0.4%	96.4%	Plastic - Multi-Material Laminate - Other Forms
24_P33P	Self-haul	0.0%	0.0%	0.0%	27.4%	Plastic - Multi-Material Laminate - Other Forms
24_P34P	Franchised Commercial	0.0%	0.0%	0.7%	41.4%	Plastic - Other/Mixed Plastics - Textiles
24_P34P	Franchised Residential	0.0%	0.0%	0.4%	69.9%	Plastic - Other/Mixed Plastics - Textiles
24_P34P	Mixed	0.0%	0.0%	0.5%	89.3%	Plastic - Other/Mixed Plastics - Textiles
24_P34P	Self-haul	0.0%	0.0%	0.5%	12.9%	Plastic - Other/Mixed Plastics - Textiles
24_P35P	Franchised Commercial	0.3%	0.0%	8.7%	70.0%	Plastic - Other/Mixed Plastics - Rigid Items
24_P35P	Franchised Residential	0.4%	0.0%	6.7%	100.0%	Plastic - Other/Mixed Plastics - Rigid Items
24_P35P	Mixed	0.2%	0.0%	0.7%	96.4%	Plastic - Other/Mixed Plastics - Rigid Items
24_P35P	Self-haul	0.0%	0.0%	0.5%	30.6%	Plastic - Other/Mixed Plastics - Rigid Items
24_P36P	Franchised Commercial	2.1%	0.0%	56.4%	80.7%	Plastic - Other/Mixed Plastics - Flexible and Film Items
24_P36P	Franchised Residential	1.9%	0.0%	5.5%	98.8%	Plastic - Other/Mixed Plastics - Flexible and Film Items
24_P36P	Mixed	1.7%	0.0%	7.7%	100.0%	Plastic - Other/Mixed Plastics - Flexible and Film Items
24_P36P	Self-haul	0.1%	0.0%	1.6%	35.5%	Plastic - Other/Mixed Plastics - Flexible and Film Items

Combined CMC Code	Sector	Mean Percent Composition (by weight)	Minimum Percent Composition (by weight)	Maximum Percent Composition (by weight)	Percent of Samples with Material Observed	Material Class, Type, Form
24_P38P	Franchised Commercial	0.3%	0.0%	3.7%	65.0%	Plastic - PET (#1) - Other Rigid Containers, Cups, Lids, Plates, Trays, Tubs
24_P38P	Franchised Residential	0.8%	0.2%	3.4%	100.0%	Plastic - PET (#1) - Other Rigid Containers, Cups, Lids, Plates, Trays, Tubs
24_P38P	Mixed	0.5%	0.0%	3.3%	100.0%	Plastic - PET (#1) - Other Rigid Containers, Cups, Lids, Plates, Trays, Tubs
24_P38P	Self-haul	0.0%	0.0%	0.1%	21.0%	Plastic - PET (#1) - Other Rigid Containers, Cups, Lids, Plates, Trays, Tubs
24_P39P	Franchised Commercial	0.0%	0.0%	2.0%	42.9%	Plastic - PET (#1) - Other Rigid Items
24_P39P	Franchised Residential	0.0%	0.0%	1.2%	79.5%	Plastic - PET (#1) - Other Rigid Items
24_P39P	Mixed	0.0%	0.0%	0.2%	89.3%	Plastic - PET (#1) - Other Rigid Items
24_P39P	Self-haul	0.0%	0.0%	0.0%	12.9%	Plastic - PET (#1) - Other Rigid Items
24_P40P	Franchised Commercial	0.1%	0.0%	1.9%	52.9%	Plastic - HDPE (#2) - Other Rigid Items
24_P40P	Franchised Residential	0.3%	0.0%	17.6%	85.5%	Plastic - HDPE (#2) - Other Rigid Items
24_P40P	Mixed	0.1%	0.0%	1.2%	89.3%	Plastic - HDPE (#2) - Other Rigid Items
24_P40P	Self-haul	0.0%	0.0%	0.1%	17.7%	Plastic - HDPE (#2) - Other Rigid Items

Combined CMC Code	Sector	Mean Percent Composition (by weight)	Minimum Percent Composition (by weight)	Maximum Percent Composition (by weight)	Percent of Samples with Material Observed	Material Class, Type, Form
24_P41P	Franchised Commercial	0.8%	0.0%	18.0%	71.4%	Plastic - PP (#5) - Other Rigid Containers, Cups, Lids, Plates, Trays, Tubs
24_P41P	Franchised Residential	1.4%	0.0%	4.2%	100.0%	Plastic - PP (#5) - Other Rigid Containers, Cups, Lids, Plates, Trays, Tubs
24_P41P	Mixed	1.0%	0.0%	5.3%	96.4%	Plastic - PP (#5) - Other Rigid Containers, Cups, Lids, Plates, Trays, Tubs
24_P41P	Self-haul	0.0%	0.0%	0.6%	25.8%	Plastic - PP (#5) - Other Rigid Containers, Cups, Lids, Plates, Trays, Tubs
24_P42P	Franchised Commercial	0.1%	0.0%	3.5%	60.0%	Plastic - PS (#6) - Other Expanded/Foamed Forms
24_P42P	Franchised Residential	0.1%	0.0%	1.2%	90.4%	Plastic - PS (#6) - Other Expanded/Foamed Forms
24_P42P	Mixed	0.1%	0.0%	1.6%	92.9%	Plastic - PS (#6) - Other Expanded/Foamed Forms
24_P42P	Self-haul	0.3%	0.0%	16.3%	25.8%	Plastic - PS (#6) - Other Expanded/Foamed Forms
24_P43P	Franchised Commercial	0.1%	0.0%	1.9%	65.0%	Plastic - PS (#6) - Solid Hinged Containers, Plates, Cups, Tubs, Trays, and Other Solid Forms
24_P43P	Franchised Residential	0.2%	0.0%	0.8%	98.8%	Plastic - PS (#6) - Solid Hinged Containers, Plates, Cups, Tubs, Trays, and Other Solid Forms

Combined CMC Code	Sector	Mean Percent Composition (by weight)	Minimum Percent Composition (by weight)	Maximum Percent Composition (by weight)	Percent of Samples with Material Observed	Material Class, Type, Form
24_P43P	Mixed	0.1%	0.0%	1.1%	92.9%	Plastic - PS (#6) - Solid Hinged Containers, Plates, Cups, Tubs, Trays, and Other Solid Forms
24_P43P	Self-haul	0.0%	0.0%	0.5%	24.2%	Plastic - PS (#6) - Solid Hinged Containers, Plates, Cups, Tubs, Trays, and Other Solid Forms
24_P44P	Franchised Commercial	0.0%	0.0%	0.4%	42.1%	Plastic - Plastics and Polymers Designed for Compostability - Rigid Items
24_P44P	Franchised Residential	0.0%	0.0%	0.1%	69.9%	Plastic - Plastics and Polymers Designed for Compostability - Rigid Items
24_P44P	Mixed	0.0%	0.0%	0.5%	92.9%	Plastic - Plastics and Polymers Designed for Compostability - Rigid Items
24_P44P	Self-haul	0.0%	0.0%	0.0%	12.9%	Plastic - Plastics and Polymers Designed for Compostability - Rigid Items
24_P45P	Franchised Commercial	0.0%	0.0%	0.2%	37.1%	Plastic - Plastics and Polymers Designed for Compostability - Flexible and Film Items
24_P45P	Franchised Residential	0.0%	0.0%	0.8%	67.5%	Plastic - Plastics and Polymers Designed for Compostability - Flexible and Film Items
24_P45P	Mixed	0.0%	0.0%	0.1%	92.9%	Plastic - Plastics and Polymers Designed for Compostability - Flexible and Film Items

Combined CMC Code	Sector	Mean Percent Composition (by weight)	Minimum Percent Composition (by weight)	Maximum Percent Composition (by weight)	Percent of Samples with Material Observed	Material Class, Type, Form
24_P45P	Self-haul	0.0%	0.0%	0.0%	14.5%	Plastic - Plastics and Polymers Designed for Compostability - Flexible and Film Items
24_P46P	Franchised Commercial	0.1%	0.0%	0.8%	57.9%	Plastic - Multi-Material Laminate - Pouches and Envelopes
24_P46P	Franchised Residential	0.2%	0.0%	0.6%	98.8%	Plastic - Multi-Material Laminate - Pouches and Envelopes
24_P46P	Mixed	0.1%	0.0%	0.6%	92.9%	Plastic - Multi-Material Laminate - Pouches and Envelopes
24_P46P	Self-haul	0.0%	0.0%	0.0%	16.1%	Plastic - Multi-Material Laminate - Pouches and Envelopes
24_P47P	Franchised Commercial	0.1%	0.0%	2.5%	65.0%	Plastic - Plastic - Small - Two or more sides measuring 2" or less
24_P47P	Franchised Residential	0.1%	0.0%	0.4%	98.8%	Plastic - Plastic - Small - Two or more sides measuring 2" or less
24_P47P	Mixed	0.1%	0.0%	0.4%	92.9%	Plastic - Plastic - Small - Two or more sides measuring 2" or less
24_P47P	Self-haul	0.0%	0.0%	0.1%	22.6%	Plastic - Plastic - Small - Two or more sides measuring 2" or less
24_P5P	Franchised Commercial	0.0%	0.0%	0.3%	37.1%	Plastic - PET (#1) - Flexible and Film Items
24_P5P	Franchised Residential	0.0%	0.0%	0.0%	62.7%	Plastic - PET (#1) - Flexible and Film Items
24_P5P	Mixed	0.0%	0.0%	0.0%	89.3%	Plastic - PET (#1) - Flexible and Film Items
24_P5P	Self-haul	0.0%	0.0%	0.0%	12.9%	Plastic - PET (#1) - Flexible and Film Items

Combined CMC Code	Sector	Mean Percent Composition (by weight)	Minimum Percent Composition (by weight)	Maximum Percent Composition (by weight)	Percent of Samples with Material Observed	Material Class, Type, Form
24_P6P	Franchised Commercial	0.3%	0.0%	8.6%	56.4%	Plastic - HDPE (#2) - Bottles, Jugs, and Jars (Clear/Natural)
24_P6P	Franchised Residential	0.2%	0.0%	0.9%	96.4%	Plastic - HDPE (#2) - Bottles, Jugs, and Jars (Clear/Natural)
24_P6P	Mixed	0.2%	0.0%	0.8%	92.9%	Plastic - HDPE (#2) - Bottles, Jugs, and Jars (Clear/Natural)
24_P6P	Self-haul	0.0%	0.0%	0.0%	12.9%	Plastic - HDPE (#2) - Bottles, Jugs, and Jars (Clear/Natural)
24_P7P	Franchised Commercial	0.2%	0.0%	1.9%	57.1%	Plastic - HDPE (#2) - Bottles, Jugs, and Jars (Pigmented/Color)
24_P7P	Franchised Residential	0.3%	0.0%	1.0%	100.0%	Plastic - HDPE (#2) - Bottles, Jugs, and Jars (Pigmented/Color)
24_P7P	Mixed	0.2%	0.0%	0.6%	92.9%	Plastic - HDPE (#2) - Bottles, Jugs, and Jars (Pigmented/Color)
24_P7P	Self-haul	0.0%	0.0%	0.2%	19.4%	Plastic - HDPE (#2) - Bottles, Jugs, and Jars (Pigmented/Color)
24_P8P	Franchised Commercial	0.3%	0.0%	7.1%	46.4%	Plastic - HDPE (#2) - Pails and Buckets
24_P8P	Franchised Residential	0.1%	0.0%	1.7%	65.1%	Plastic - HDPE (#2) - Pails and Buckets
24_P8P	Mixed	0.1%	0.0%	0.9%	89.3%	Plastic - HDPE (#2) - Pails and Buckets
24_P8P	Self-haul	0.1%	0.0%	1.0%	22.6%	Plastic - HDPE (#2) - Pails and Buckets
24_PF1N/P	Franchised Commercial	0.7%	0.0%	15.3%	67.1%	Paper and Fiber - Kraft Paper - All Forms
24_PF1N/P	Franchised Residential	0.4%	0.0%	1.3%	100.0%	Paper and Fiber - Kraft Paper - All Forms

Combined CMC Code	Sector	Mean Percent Composition (by weight)	Minimum Percent Composition (by weight)	Maximum Percent Composition (by weight)	Percent of Samples with Material Observed	Material Class, Type, Form
24_PF1N/P	Mixed	1.0%	0.0%	12.8%	96.4%	Paper and Fiber - Kraft Paper - All Forms
24_PF1N/P	Self-haul	0.1%	0.0%	1.1%	25.8%	Paper and Fiber - Kraft Paper - All Forms
24_PF10N/P	Franchised Commercial	1.2%	0.0%	9.2%	77.9%	Paper and Fiber - Paperboard - All Forms
24_PF10N/P	Franchised Residential	2.0%	0.1%	3.9%	100.0%	Paper and Fiber - Paperboard - All Forms
24_PF10N/P	Mixed	1.2%	0.0%	3.4%	96.4%	Paper and Fiber - Paperboard - All Forms
24_PF10N/P	Self-haul	0.1%	0.0%	0.9%	37.1%	Paper and Fiber - Paperboard - All Forms
24_PF11N/P	Franchised Commercial	0.0%	0.0%	0.7%	47.1%	Paper and Fiber - White Paper - All Forms
24_PF11N/P	Franchised Residential	0.0%	0.0%	0.3%	77.1%	Paper and Fiber - White Paper - All Forms
24_PF11N/P	Mixed	0.0%	0.0%	0.1%	85.7%	Paper and Fiber - White Paper - All Forms
24_PF11N/P	Self-haul	0.0%	0.0%	0.0%	17.7%	Paper and Fiber - White Paper - All Forms
24_PF12N/P	Franchised Commercial	0.3%	0.0%	2.7%	60.7%	Paper and Fiber - Other/Mixed Paper - All Forms
24_PF12N/P	Franchised Residential	0.3%	0.0%	0.9%	100.0%	Paper and Fiber - Other/Mixed Paper - All Forms
24_PF12N/P	Mixed	0.3%	0.0%	1.7%	92.9%	Paper and Fiber - Other/Mixed Paper - All Forms
24_PF12N/P	Self-haul	0.0%	0.0%	0.0%	17.7%	Paper and Fiber - Other/Mixed Paper - All Forms

Combined CMC Code	Sector	Mean Percent Composition (by weight)	Minimum Percent Composition (by weight)	Maximum Percent Composition (by weight)	Percent of Samples with Material Observed	Material Class, Type, Form
24_PF14N/P	Franchised Commercial	0.3%	0.0%	5.4%	59.3%	Paper and Fiber - Molded Fiber - All Forms
24_PF14N/P	Franchised Residential	0.4%	0.0%	2.0%	96.4%	Paper and Fiber - Molded Fiber - All Forms
24_PF14N/P	Mixed	0.6%	0.0%	10.6%	85.7%	Paper and Fiber - Molded Fiber - All Forms
24_PF14N/P	Self-haul	0.0%	0.0%	0.3%	17.7%	Paper and Fiber - Molded Fiber - All Forms
24_PF15P	Franchised Commercial	0.1%	0.0%	1.9%	52.9%	Paper and Fiber - Multi-Material Laminate - Aseptic Cartons
24_PF15P	Franchised Residential	0.1%	0.0%	1.0%	100.0%	Paper and Fiber - Multi-Material Laminate - Aseptic Cartons
24_PF15P	Mixed	0.1%	0.0%	0.7%	89.3%	Paper and Fiber - Multi-Material Laminate - Aseptic Cartons
24_PF15P	Self-haul	0.0%	0.0%	0.1%	12.9%	Paper and Fiber - Multi-Material Laminate - Aseptic Cartons
24_PF16N/P	Franchised Commercial	0.0%	0.0%	0.2%	42.9%	Paper and Fiber - Paper and Fiber - Small - Two or more sides measuring 2" or less
24_PF16N/P	Franchised Residential	0.0%	0.0%	0.1%	73.5%	Paper and Fiber - Paper and Fiber - Small - Two or more sides measuring 2" or less
24_PF16N/P	Mixed	0.0%	0.0%	0.0%	85.7%	Paper and Fiber - Paper and Fiber - Small - Two or more sides measuring 2" or less
24_PF16N/P	Self-haul	0.0%	0.0%	0.0%	11.3%	Paper and Fiber - Paper and Fiber - Small - Two or more sides measuring 2" or less

Combined CMC Code	Sector	Mean Percent Composition (by weight)	Minimum Percent Composition (by weight)	Maximum Percent Composition (by weight)	Percent of Samples with Material Observed	Material Class, Type, Form
24_PF5P	Franchised Commercial	0.1%	0.0%	4.4%	51.4%	Paper and Fiber - Multi-Material Laminate - Gable-top Cartons
24_PF5P	Franchised Residential	0.2%	0.0%	0.7%	92.8%	Paper and Fiber - Multi-Material Laminate - Gable-top Cartons
24_PF5P	Mixed	0.2%	0.0%	2.1%	92.9%	Paper and Fiber - Multi-Material Laminate - Gable-top Cartons
24_PF5P	Self-haul	0.0%	0.0%	0.0%	11.3%	Paper and Fiber - Multi-Material Laminate - Gable-top Cartons
24_PF7N/P	Franchised Commercial	1.2%	0.0%	28.9%	66.4%	Paper and Fiber - Multi-Material Laminate - Other Forms
24_PF7N/P	Franchised Residential	2.5%	0.0%	6.1%	98.8%	Paper and Fiber - Multi-Material Laminate - Other Forms
24_PF7N/P	Mixed	1.5%	0.0%	8.1%	96.4%	Paper and Fiber - Multi-Material Laminate - Other Forms
24_PF7N/P	Self-haul	0.0%	0.0%	0.6%	25.8%	Paper and Fiber - Multi-Material Laminate - Other Forms
24_PF8N/P	Franchised Commercial	0.1%	0.0%	4.2%	38.6%	Paper and Fiber - OCC - Waxed Cardboard
24_PF8N/P	Franchised Residential	0.0%	0.0%	2.8%	63.9%	Paper and Fiber - OCC - Waxed Cardboard
24_PF8N/P	Mixed	0.5%	0.0%	5.0%	85.7%	Paper and Fiber - OCC - Waxed Cardboard
24_PF8N/P	Self-haul	0.0%	0.0%	0.0%	11.3%	Paper and Fiber - OCC - Waxed Cardboard
24_PF9N/P	Franchised Commercial	5.4%	0.0%	42.2%	80.0%	Paper and Fiber - OCC - Cardboard
24_PF9N/P	Franchised Residential	2.0%	0.1%	11.3%	100.0%	Paper and Fiber - OCC - Cardboard

Combined CMC Code	Sector	Mean Percent Composition (by weight)	Minimum Percent Composition (by weight)	Maximum Percent Composition (by weight)	Percent of Samples with Material Observed	Material Class, Type, Form
24_PF9N/P	Mixed	6.0%	0.9%	16.5%	100.0%	Paper and Fiber - OCC - Cardboard
24_PF9N/P	Self-haul	5.0%	0.0%	100.0%	54.8%	Paper and Fiber - OCC - Cardboard
24_WO1N/P	Franchised Commercial	3.6%	0.0%	99.7%	21.4%	Wood and Other Organic Materials - Wood - All Untreated Forms
24_WO1N/P	Franchised Residential	0.0%	0.0%	0.1%	20.5%	Wood and Other Organic Materials - Wood - All Untreated Forms
24_WO1N/P	Mixed	1.6%	0.0%	15.3%	28.6%	Wood and Other Organic Materials - Wood - All Untreated Forms
24_WO1N/P	Self-haul	0.6%	0.0%	40.1%	3.2%	Wood and Other Organic Materials - Wood - All Untreated Forms
24_WO2N/P	Franchised Commercial	1.1%	0.0%	100.0%	12.1%	Wood and Other Organic Materials - Wood - All Treated or Painted Forms
24_WO2N/P	Franchised Residential	0.0%	0.0%	0.8%	20.5%	Wood and Other Organic Materials - Wood - All Treated or Painted Forms
24_WO2N/P	Mixed	0.0%	0.0%	0.0%	7.1%	Wood and Other Organic Materials - Wood - All Treated or Painted Forms
24_WO2N/P	Self-haul	0.5%	0.0%	29.6%	1.6%	Wood and Other Organic Materials - Wood - All Treated or Painted Forms
24_WO3N/P	Franchised Commercial	0.0%	0.0%	0.3%	9.3%	Wood and Other Organic Materials - Other/Mixed Organic - Textiles
24_WO3N/P	Franchised Residential	0.0%	0.0%	0.1%	20.5%	Wood and Other Organic Materials - Other/Mixed Organic - Textiles
24_WO3N/P	Mixed	0.0%	0.0%	0.0%	10.7%	Wood and Other Organic Materials - Other/Mixed Organic - Textiles
24_WO3N/P	Self-haul	0.0%	0.0%	0.4%	1.6%	Wood and Other Organic Materials - Other/Mixed Organic - Textiles
24_WO4N/P	Franchised Commercial	0.0%	0.0%	2.0%	8.6%	Wood and Other Organic Materials - Other/Mixed Organic - Other Forms

Combined CMC Code	Sector	Mean Percent Composition (by weight)	Minimum Percent Composition (by weight)	Maximum Percent Composition (by weight)	Percent of Samples with Material Observed	Material Class, Type, Form
24_WO4N/P	Franchised Residential	0.0%	0.0%	0.2%	20.5%	Wood and Other Organic Materials - Other/Mixed Organic - Other Forms
24_WO4N/P	Mixed	0.0%	0.0%	0.0%	7.1%	Wood and Other Organic Materials - Other/Mixed Organic - Other Forms
24_WO4N/P	Self-haul	0.0%	0.0%	0.0%	0.0%	Wood and Other Organic Materials - Other/Mixed Organic - Other Forms
24_WO6N/P	Franchised Commercial	0.0%	0.0%	0.0%	12.9%	Wood and Other Organic Materials - Wood and Other Organic Materials - Small - Two or more sides measuring 2" or less
24_WO6N/P	Franchised Residential	0.0%	0.0%	0.1%	30.1%	Wood and Other Organic Materials - Wood and Other Organic Materials - Small - Two or more sides measuring 2" or less
24_WO6N/P	Mixed	0.0%	0.0%	0.1%	14.3%	Wood and Other Organic Materials - Wood and Other Organic Materials - Small - Two or more sides measuring 2" or less
24_WO6N/P	Self-haul	0.0%	0.0%	0.3%	1.6%	Wood and Other Organic Materials - Wood and Other Organic Materials - Small - Two or more sides measuring 2" or less
n/a	Franchised Commercial	1.3%	0.0%	48.1%	53.6%	Mixed - non-CMC - Non-Food Discarded in Original Packaging
n/a	Franchised Residential	0.8%	0.0%	9.0%	94.0%	Mixed - non-CMC - Non-Food Discarded in Original Packaging
n/a	Mixed	1.7%	0.0%	31.9%	78.6%	Mixed - non-CMC - Non-Food Discarded in Original Packaging

Combined CMC Code	Sector	Mean Percent Composition (by weight)	Minimum Percent Composition (by weight)	Maximum Percent Composition (by weight)	Percent of Samples with Material Observed	Material Class, Type, Form
n/a	Self-haul	2.2%	0.0%	99.7%	21.0%	Mixed - non-CMC - Non-Food Discarded in Original Packaging
n/a	Franchised Commercial	32.0%	0.0%	100.0%	92.9%	Mixed - non-CMC - Remainder Miscellaneous
n/a	Franchised Residential	24.8%	0.0%	54.2%	98.8%	Mixed - non-CMC - Remainder Miscellaneous
n/a	Mixed	35.3%	9.5%	87.3%	100.0%	Mixed - non-CMC - Remainder Miscellaneous
n/a	Self-haul	66.4%	0.0%	100.0%	85.5%	Mixed - non-CMC - Remainder Miscellaneous
n/a	Franchised Commercial	2.6%	0.0%	57.9%	75.0%	Mixed - non-CMC - Mixed Residue
n/a	Franchised Residential	5.2%	0.0%	20.6%	98.8%	Mixed - non-CMC - Mixed Residue
n/a	Mixed	6.9%	0.0%	23.6%	96.4%	Mixed - non-CMC - Mixed Residue
n/a	Self-haul	2.0%	0.0%	47.9%	43.5%	Mixed - non-CMC - Mixed Residue
n/a	Franchised Commercial	0.1%	0.0%	2.3%	12.9%	Ceramic - non-CMC - Ceramic Potentially Reusable Packaging and Food Service Ware
n/a	Franchised Residential	0.1%	0.0%	0.9%	33.7%	Ceramic - non-CMC - Ceramic Potentially Reusable Packaging and Food Service Ware
n/a	Mixed	0.0%	0.0%	0.3%	28.6%	Ceramic - non-CMC - Ceramic Potentially Reusable Packaging and Food Service Ware
n/a	Self-haul	0.0%	0.0%	0.5%	1.6%	Ceramic - non-CMC - Ceramic Potentially Reusable Packaging and Food Service Ware

Combined CMC Code	Sector	Mean Percent Composition (by weight)	Minimum Percent Composition (by weight)	Maximum Percent Composition (by weight)	Percent of Samples with Material Observed	Material Class, Type, Form
n/a	Franchised Commercial	0.3%	0.0%	21.8%	7.9%	Ceramic - non-CMC - Remainder/Composite Ceramic
n/a	Franchised Residential	0.1%	0.0%	1.8%	18.1%	Ceramic - non-CMC - Remainder/Composite Ceramic
n/a	Mixed	0.4%	0.0%	6.4%	42.9%	Ceramic - non-CMC - Remainder/Composite Ceramic
n/a	Self-haul	2.7%	0.0%	92.5%	14.5%	Ceramic - non-CMC - Remainder/Composite Ceramic
n/a	Franchised Commercial	0.0%	0.0%	1.1%	5.0%	Glass - non-CMC - Glass Potentially Reusable Packaging and Food Service Ware
n/a	Franchised Residential	0.1%	0.0%	1.6%	20.5%	Glass - non-CMC - Glass Potentially Reusable Packaging and Food Service Ware
n/a	Mixed	0.0%	0.0%	0.6%	14.3%	Glass - non-CMC - Glass Potentially Reusable Packaging and Food Service Ware
n/a	Self-haul	0.0%	0.0%	0.0%	0.0%	Glass - non-CMC - Glass Potentially Reusable Packaging and Food Service Ware
n/a	Franchised Commercial	1.0%	0.0%	21.7%	55.0%	Glass - non-CMC - Remainder/Composite Glass
n/a	Franchised Residential	1.6%	0.0%	7.1%	91.6%	Glass - non-CMC - Remainder/Composite Glass
n/a	Mixed	0.8%	0.0%	4.8%	82.1%	Glass - non-CMC - Remainder/Composite Glass
n/a	Self-haul	0.0%	0.0%	1.2%	14.5%	Glass - non-CMC - Remainder/Composite Glass

Combined CMC Code	Sector	Mean Percent Composition (by weight)	Minimum Percent Composition (by weight)	Maximum Percent Composition (by weight)	Percent of Samples with Material Observed	Material Class, Type, Form
n/a	Franchised Commercial	0.0%	0.0%	0.5%	8.6%	Metal - non-CMC - Metal Potentially Reusable Packaging and Food Service Ware
n/a	Franchised Residential	0.0%	0.0%	0.8%	31.3%	Metal - non-CMC - Metal Potentially Reusable Packaging and Food Service Ware
n/a	Mixed	0.0%	0.0%	0.1%	10.7%	Metal - non-CMC - Metal Potentially Reusable Packaging and Food Service Ware
n/a	Self-haul	0.0%	0.0%	0.4%	3.2%	Metal - non-CMC - Metal Potentially Reusable Packaging and Food Service Ware
n/a	Franchised Commercial	3.5%	0.0%	42.7%	82.1%	Metal - non-CMC - Remainder/Composite Metal
n/a	Franchised Residential	2.6%	0.0%	21.6%	98.8%	Metal - non-CMC - Remainder/Composite Metal
n/a	Mixed	2.5%	0.0%	12.3%	92.9%	Metal - non-CMC - Remainder/Composite Metal
n/a	Self-haul	5.5%	0.0%	79.2%	58.1%	Metal - non-CMC - Remainder/Composite Metal
n/a	Franchised Commercial	0.1%	0.0%	10.2%	13.6%	Plastic - non-CMC - Plastic Potentially Reusable Packaging and Food Service Ware
n/a	Franchised Residential	0.0%	0.0%	0.6%	26.5%	Plastic - non-CMC - Plastic Potentially Reusable Packaging and Food Service Ware

Combined CMC Code	Sector	Mean Percent Composition (by weight)	Minimum Percent Composition (by weight)	Maximum Percent Composition (by weight)	Percent of Samples with Material Observed	Material Class, Type, Form
n/a	Mixed	0.1%	0.0%	1.4%	17.9%	Plastic - non-CMC - Plastic Potentially Reusable Packaging and Food Service Ware
n/a	Self-haul	0.0%	0.0%	1.3%	1.6%	Plastic - non-CMC - Plastic Potentially Reusable Packaging and Food Service Ware
n/a	Franchised Commercial	7.2%	0.0%	70.1%	87.9%	Plastic - non-CMC - Remainder/Composite Plastic
n/a	Franchised Residential	6.5%	0.3%	21.6%	100.0%	Plastic - non-CMC - Remainder/Composite Plastic
n/a	Mixed	7.2%	1.3%	21.3%	100.0%	Plastic - non-CMC - Remainder/Composite Plastic
n/a	Self-haul	1.3%	0.0%	15.2%	53.2%	Plastic - non-CMC - Remainder/Composite Plastic
n/a	Franchised Commercial	0.0%	0.0%	2.2%	0.7%	Paper and Fiber - non-CMC - Other/Mixed Paper Potentially Reusable Packaging and Food Service Ware
n/a	Franchised Residential	0.0%	0.0%	0.0%	0.0%	Paper and Fiber - non-CMC - Other/Mixed Paper Potentially Reusable Packaging and Food Service Ware
n/a	Mixed	0.0%	0.0%	0.0%	0.0%	Paper and Fiber - non-CMC - Other/Mixed Paper Potentially Reusable Packaging and Food Service Ware

Combined CMC Code	Sector	Mean Percent Composition (by weight)	Minimum Percent Composition (by weight)	Maximum Percent Composition (by weight)	Percent of Samples with Material Observed	Material Class, Type, Form
n/a	Self-haul	0.0%	0.0%	0.8%	1.6%	Paper and Fiber - non-CMC - Other/Mixed Paper Potentially Reusable Packaging and Food Service Ware
n/a	Franchised Commercial	7.8%	0.0%	94.0%	80.0%	Paper and Fiber - non-CMC - Other/Mixed Paper Remainder/Composite Mixed Paper
n/a	Franchised Residential	11.3%	0.0%	27.1%	98.8%	Paper and Fiber - non-CMC - Other/Mixed Paper Remainder/Composite Mixed Paper
n/a	Mixed	7.1%	0.0%	15.6%	100.0%	Paper and Fiber - non-CMC - Other/Mixed Paper Remainder/Composite Mixed Paper
n/a	Self-haul	1.4%	0.0%	36.9%	40.3%	Paper and Fiber - non-CMC - Other/Mixed Paper Remainder/Composite Mixed Paper
n/a	Franchised Commercial	4.3%	0.0%	99.0%	67.9%	Wood and Other Organic Materials - non-CMC - Other/Mixed Organic Food Discarded in Original Packaging or Food Service Ware
n/a	Franchised Residential	8.1%	0.0%	21.3%	98.8%	Wood and Other Organic Materials - non-CMC - Other/Mixed Organic Food Discarded in Original Packaging or Food Service Ware
n/a	Mixed	5.3%	0.0%	66.9%	92.9%	Wood and Other Organic Materials - non-CMC - Other/Mixed Organic Food Discarded in Original Packaging or Food Service Ware

Combined CMC Code	Sector	Mean Percent Composition (by weight)	Minimum Percent Composition (by weight)	Maximum Percent Composition (by weight)	Percent of Samples with Material Observed	Material Class, Type, Form
n/a	Self-haul	0.1%	0.0%	1.5%	14.5%	Wood and Other Organic Materials - non-CMC - Other/Mixed Organic Food Discarded in Original Packaging or Food Service Ware
n/a	Franchised Commercial	0.0%	0.0%	0.5%	1.4%	Wood and Other Organic Materials - non-CMC - Other/Mixed Organic Potentially Reusable Packaging and Food Service Ware
n/a	Franchised Residential	0.0%	0.0%	0.4%	3.6%	Wood and Other Organic Materials - non-CMC - Other/Mixed Organic Potentially Reusable Packaging and Food Service Ware
n/a	Mixed	0.0%	0.0%	0.0%	0.0%	Wood and Other Organic Materials - non-CMC - Other/Mixed Organic Potentially Reusable Packaging and Food Service Ware
n/a	Self-haul	0.0%	0.0%	0.0%	1.6%	Wood and Other Organic Materials - non-CMC - Other/Mixed Organic Potentially Reusable Packaging and Food Service Ware
n/a	Franchised Commercial	18.0%	0.0%	100.0%	81.4%	Wood and Other Organic Materials - non-CMC - Other/Mixed Organic Remainder/Composite Organic
n/a	Franchised Residential	21.2%	8.0%	96.6%	100.0%	Wood and Other Organic Materials - non-CMC - Other/Mixed Organic Remainder/Composite Organic

Combined CMC Code	Sector	Mean Percent Composition (by weight)	Minimum Percent Composition (by weight)	Maximum Percent Composition (by weight)	Percent of Samples with Material Observed	Material Class, Type, Form
n/a	Mixed	11.7%	0.0%	28.3%	96.4%	Wood and Other Organic Materials - non-CMC - Other/Mixed Organic Remainder/Composite Organic
n/a	Self-haul	11.2%	0.0%	100.0%	48.4%	Wood and Other Organic Materials - non-CMC - Other/Mixed Organic Remainder/Composite Organic

Table A8: Statewide Disposal Estimates for All Material Categories

This table is an expansion of Table 6 (from main report), with disposal estimates for non-CMC items included. Each row of the table contains data for each sorting category for covered material. The first four columns identify the sorting category by combined CMC code, material class, material type, and material form. Any item with “n/a” in the Combined CMC Code column is a non-CMC material type characterized within the study. The fifth column is the annual average (mean) statewide disposal estimate in tons. The sixth column is the percentage of total statewide disposal that each sorting category accounts for. All sorting categories with a corresponding code starting with “24_” are categories specific to covered material. Additionally, in the code column, the alphanumeric material code ends with either an “N” and/or a “P” indicating whether the item contains an inseparable plastic component (P) or contains no plastic component (N). An “N/P” indicates that the material form contains two covered materials, one with and one without separable plastic components.

Statistical descriptions of variation and error (e.g., margin of error and standard deviation) are not included in the preliminary findings. Further statistical analyses will be conducted, and statistical descriptions will be provided in the final findings report.

Combined CMC Code	Material Class	Material Type	Combined Form	Average (mean) annual statewide disposal (tons)	Percentage of total statewide disposal
24_C1N/P	Ceramic	Ceramic	All Forms	1,830	0.005%
24_C2N/P	Ceramic	Ceramic	Small - Two or more sides measuring 2" or less	8,242	0.021%
24_G1N/P	Glass	Glass	Bottles and Jars	112,124	0.280%

Combined CMC Code	Material Class	Material Type	Combined Form	Average (mean) annual statewide disposal (tons)	Percentage of total statewide disposal
24_G2N/P	Glass	Glass	Other Forms	1,152	0.003%
24_G3N/P	Glass	Glass	Small - Two or more sides measuring 2" or less	3,069	0.008%
24_M1N/P	Metal	Aluminum	Non-aerosol container	9,082	0.023%
24_M10N/P	Metal	Other Ferrous	All Forms	6,683	0.017%
24_M12N/P	Metal	Metal	Small - Two or more sides measuring 2" or less	1,605	0.004%
24_M2N/P	Metal	Aluminum	Foil sheets	46,681	0.117%
24_M3N/P	Metal	Aluminum	Foil Molded Containers	15,850	0.040%
24_M4P	Metal	Aluminum	Aerosol can	5,645	0.014%
24_M5N/P	Metal	Aluminum	Other Forms	12,033	0.030%
24_M6N/P	Metal	Tin/Steel/Bimetal	Non-aerosol container	115,576	0.289%
24_M7P	Metal	Tin/Steel/Bimetal	Aerosol can	20,781	0.052%
24_M8N/P	Metal	Tin/Steel/Bimetal	Other Forms	32,041	0.080%
24_M9N/P	Metal	Other Nonferrous	All Forms	2,495	0.006%
24_P1P	Plastic	PET (#1)	Bottles, Jugs, and Jars (Clear/Natural)	59,868	0.150%
24_P10P	Plastic	HDPE (#2)	Flexible and Film Items	28,893	0.072%
24_P11P	Plastic	PVC (#3)	Rigid Items	3,542	0.009%
24_P12P	Plastic	PVC (#3)	Flexible and Film Items	5,079	0.013%
24_P13P	Plastic	LDPE (#4)	Bottles, Jugs, and Jars	495	0.001%
24_P14P	Plastic	LDPE (#4)	Other Rigid Items	4,672	0.012%
24_P15P	Plastic	LDPE (#4)	Clear Non-Bag Film	255,055	0.637%
24_P16P	Plastic	LDPE (#4)	Other Flexible and Film Items	288,682	0.721%
24_P17P	Plastic	PP (#5)	Bottles, Jugs, and Jars	2,792	0.007%
24_P19P	Plastic	PP (#5)	Utensils	11,725	0.029%
24_P2P	Plastic	PET (#1)	Bottles, Jugs, and Jars (Pigmented/Color)	26,392	0.066%

Combined CMC Code	Material Class	Material Type	Combined Form	Average (mean) annual statewide disposal (tons)	Percentage of total statewide disposal
24_P20P	Plastic	PP (#5)	Other Rigid Items	62,472	0.156%
24_P21P	Plastic	PP (#5)	Clear Non-Bag Film	4,640	0.012%
24_P22P	Plastic	PP (#5)	Other Flexible and Film Items	32,124	0.080%
24_P23P	Plastic	PS (#6)	Expanded/Foamed Hinged Containers, Plates, Cups, Tubs, Trays, and Other Foamed Containers	46,972	0.117%
24_P27P	Plastic	PS (#6)	Utensils	11,124	0.028%
24_P29P	Plastic	PS (#6)	Flexible and Film Items	1,148	0.003%
24_P33P	Plastic	Multi-Material Laminate	Other Forms	51,949	0.130%
24_P34P	Plastic	Other/Mixed Plastics	Textiles	10,856	0.027%
24_P35P	Plastic	Other/Mixed Plastics	Rigid Items	96,681	0.241%
24_P36P	Plastic	Other/Mixed Plastics	Flexible and Film Items	646,601	1.615%
24_P38P	Plastic	PET (#1)	Other Rigid Containers, Cups, Lids, Plates, Trays, Tubs	184,891	0.462%
24_P39P	Plastic	PET (#1)	Other Rigid Items	9,978	0.025%
24_P40P	Plastic	HDPE (#2)	Other Rigid Items	38,782	0.097%
24_P41P	Plastic	PP (#5)	Other Rigid Containers, Cups, Lids, Plates, Trays, Tubs	356,061	0.889%
24_P42P	Plastic	PS (#6)	Other Expanded/Foamed Forms	55,400	0.138%
24_P43P	Plastic	PS (#6)	Solid Hinged Containers, Plates, Cups, Tubs, Trays, and Other Solid Forms	54,868	0.137%

Combined CMC Code	Material Class	Material Type	Combined Form	Average (mean) annual statewide disposal (tons)	Percentage of total statewide disposal
24_P44P	Plastic	Plastics and Polymers Designed for Compostability	Rigid Items	10,921	0.027%
24_P45P	Plastic	Plastics and Polymers Designed for Compostability	Flexible and Film Items	3,005	0.008%
24_P46P	Plastic	Multi-Material Laminate	Pouches and Envelopes	39,053	0.098%
24_P47P	Plastic	Plastic	Small - Two or more sides measuring 2" or less	29,029	0.073%
24_P5P	Plastic	PET (#1)	Flexible and Film Items	584	0.001%
24_P6P	Plastic	HDPE (#2)	Bottles, Jugs, and Jars (Clear/Natural)	82,024	0.205%
24_P7P	Plastic	HDPE (#2)	Bottles, Jugs, and Jars (Pigmented/Color)	74,985	0.187%
24_P8P	Plastic	HDPE (#2)	Pails and Buckets	50,153	0.125%
24_PF1N/P	Paper and Fiber	Kraft Paper	All Forms	298,529	0.746%
24_PF10N/P	Paper and Fiber	Paperboard	All Forms	467,054	1.167%
24_PF11N/P	Paper and Fiber	White Paper	All Forms	4,724	0.012%
24_PF12N/P	Paper and Fiber	Other/Mixed Paper	All Forms	94,482	0.236%

Combined CMC Code	Material Class	Material Type	Combined Form	Average (mean) annual statewide disposal (tons)	Percentage of total statewide disposal
24_PF14N/P	Paper and Fiber	Molded Fiber	All Forms	171,459	0.428%
24_PF15P	Paper and Fiber	Multi-Material Laminate	Aseptic Cartons	38,608	0.096%
24_PF16N/P	Paper and Fiber	Paper and Fiber	Small - Two or more sides measuring 2" or less	1,764	0.004%
24_PF5P	Paper and Fiber	Multi-Material Laminate	Gable-top Cartons	67,412	0.168%
24_PF7P	Paper and Fiber	Multi-Material Laminate	Other Forms	549,577	1.373%
24_PF8N/P	Paper and Fiber	OCC	Waxed Cardboard	110,761	0.277%
24_PF9N/P	Paper and Fiber	OCC	Cardboard	2,092,128	5.226%
24_WO1N/P	Wood and Other Organic Materials	Wood	All Untreated Forms	725,609	1.812%

Combined CMC Code	Material Class	Material Type	Combined Form	Average (mean) annual statewide disposal (tons)	Percentage of total statewide disposal
24_WO2N/P	Wood and Other Organic Materials	Wood	All Treated or Painted Forms	137,818	0.344%
24_WO3N/P	Wood and Other Organic Materials	Other/Mixed Organic	Textiles	1,027	0.003%
24_WO4N/P	Wood and Other Organic Materials	Other/Mixed Organic	Other Forms	1,643	0.004%
24_WO6N/P	Wood and Other Organic Materials	Wood and Other Organic Materials	Small - Two or more sides measuring 2" or less	1,156	0.003%
n/a	Mixed	non-CMC	Non-Food Discarded in Original Packaging	603,781	1.508%
n/a	Mixed	non-CMC	Remainder Miscellaneous	14,592,046	36.448%
n/a	Mixed	non-CMC	Mixed Residue	1,996,763	4.987%
n/a	Ceramic	non-CMC	Ceramic Potentially Reusable Packaging and Food Service Ware	19,713	0.049%
n/a	Ceramic	non-CMC	Remainder/Composite Ceramic	233,267	0.583%

Combined CMC Code	Material Class	Material Type	Combined Form	Average (mean) annual statewide disposal (tons)	Percentage of total statewide disposal
n/a	Glass	non-CMC	Glass Potentially Reusable Packaging and Food Service Ware	11,974	0.030%
n/a	Glass	non-CMC	Remainder/Composite Glass	347,121	0.867%
n/a	Metal	non-CMC	Metal Potentially Reusable Packaging and Food Service Ware	4,362	0.011%
n/a	Metal	non-CMC	Remainder/Composite Metal	1,248,485	3.118%
n/a	Plastic	non-CMC	Plastic Potentially Reusable Packaging and Food Service Ware	37,693	0.094%
n/a	Plastic	non-CMC	Remainder/Composite Plastic	2,563,741	6.404%
n/a	Paper and Fiber	non-CMC	Other/Mixed Paper Potentially Reusable Packaging and Food Service Ware	2,241	0.006%
n/a	Paper and Fiber	non-CMC	Other/Mixed Paper Remainder/Composite Mixed Paper	2,860,223	7.144%
n/a	Wood and Other Organic Materials	non-CMC	Other/Mixed Organic Food Discarded in Original Packaging or Food Service Ware	1,910,400	4.772%
n/a	Wood and Other Organic Materials	non-CMC	Other/Mixed Organic Potentially Reusable Packaging and Food Service Ware	810	0.002%

Combined CMC Code	Material Class	Material Type	Combined Form	Average (mean) annual statewide disposal (tons)	Percentage of total statewide disposal
n/a	Wood and Other Organic Materials	non-CMC	Other/Mixed Organic Remainder/Composite Organic	5,802,893	14.494%