



Textile Exchange

Home and Hospitality Recycling Project

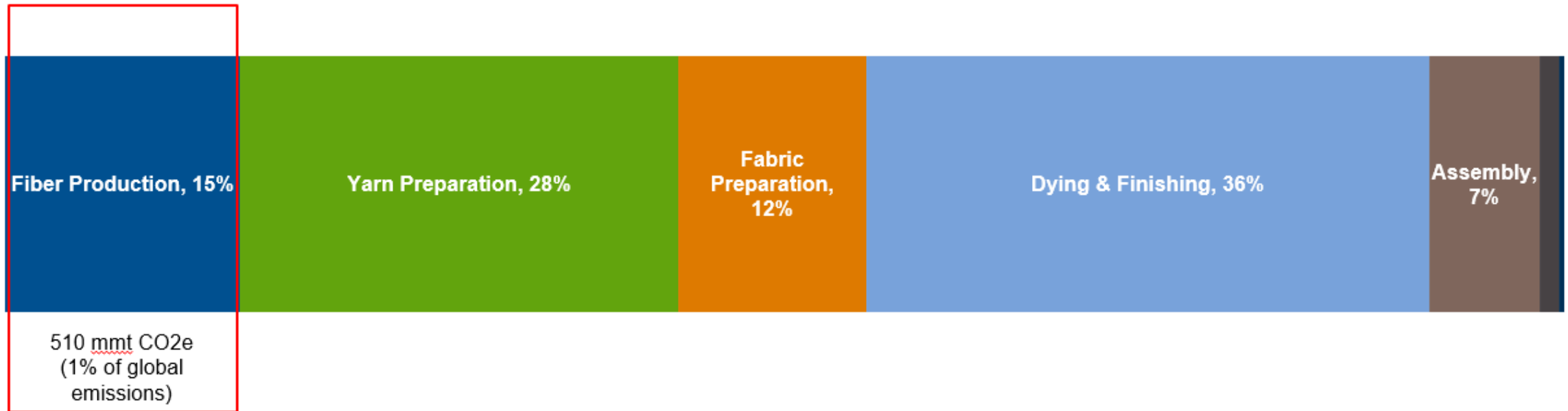
December 3, 2019

Textile Exchange's 2030 "Climate+" Goal

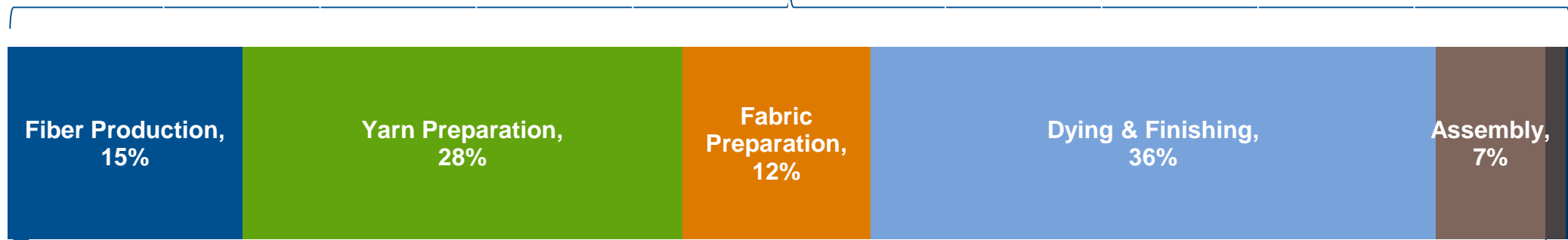
Textile Exchange will be the driving force for urgent climate action with a goal of 35-45% reduced CO2 emissions from textile fiber and material production by 2030.

2016 Apparel CO2 Footprint (Quantis)

3300 million metric tons of CO2e = 6.7% of global emissions

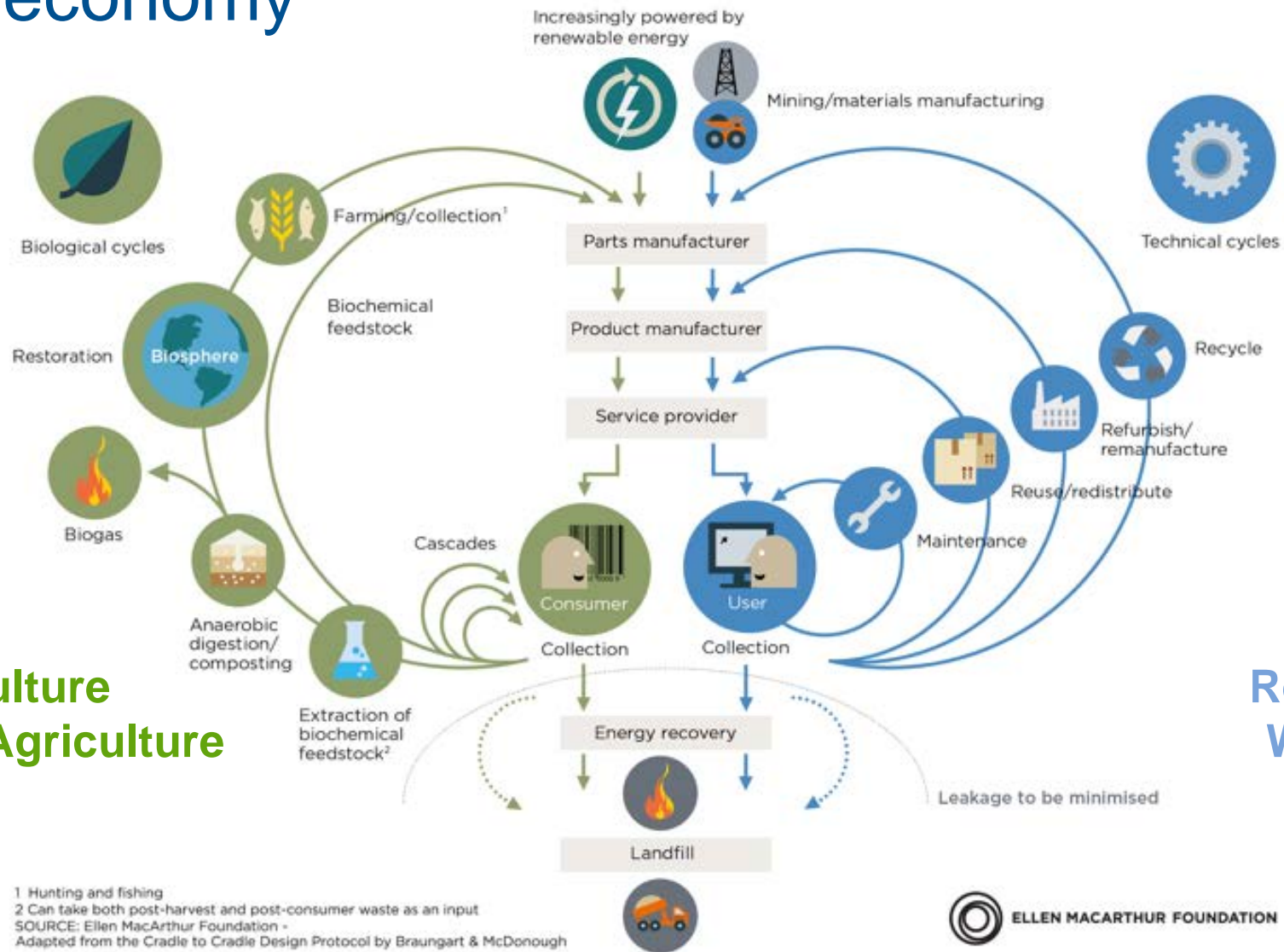


Climate partnerships



fashionpositive⁺

Circular economy



Organic Agriculture
 Regenerative Agriculture
 Biosynthetics

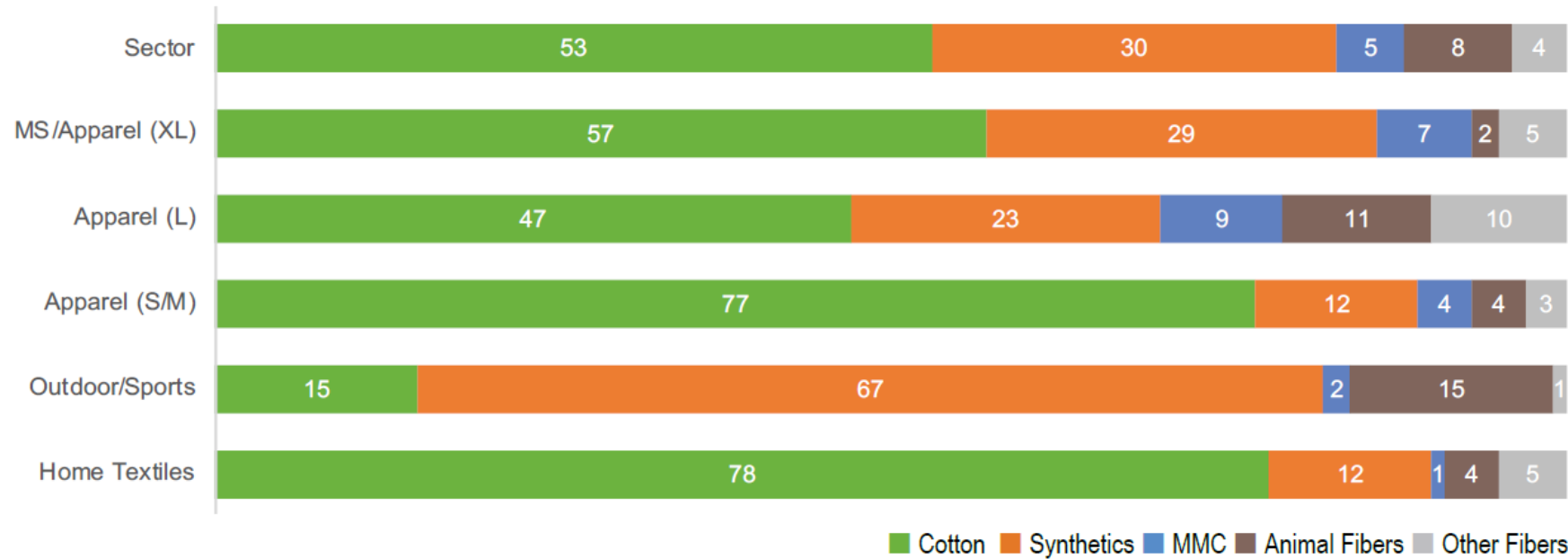
Recycled Material
 Waste Reduction

¹ Hunting and fishing
² Can take both post-harvest and post-consumer waste as an input
 SOURCE: Ellen MacArthur Foundation -
 Adapted from the Cradle to Cradle Design Protocol by Braungart & McDonough

2018 Fiber & Material Portfolio

FM Usage Breakdown

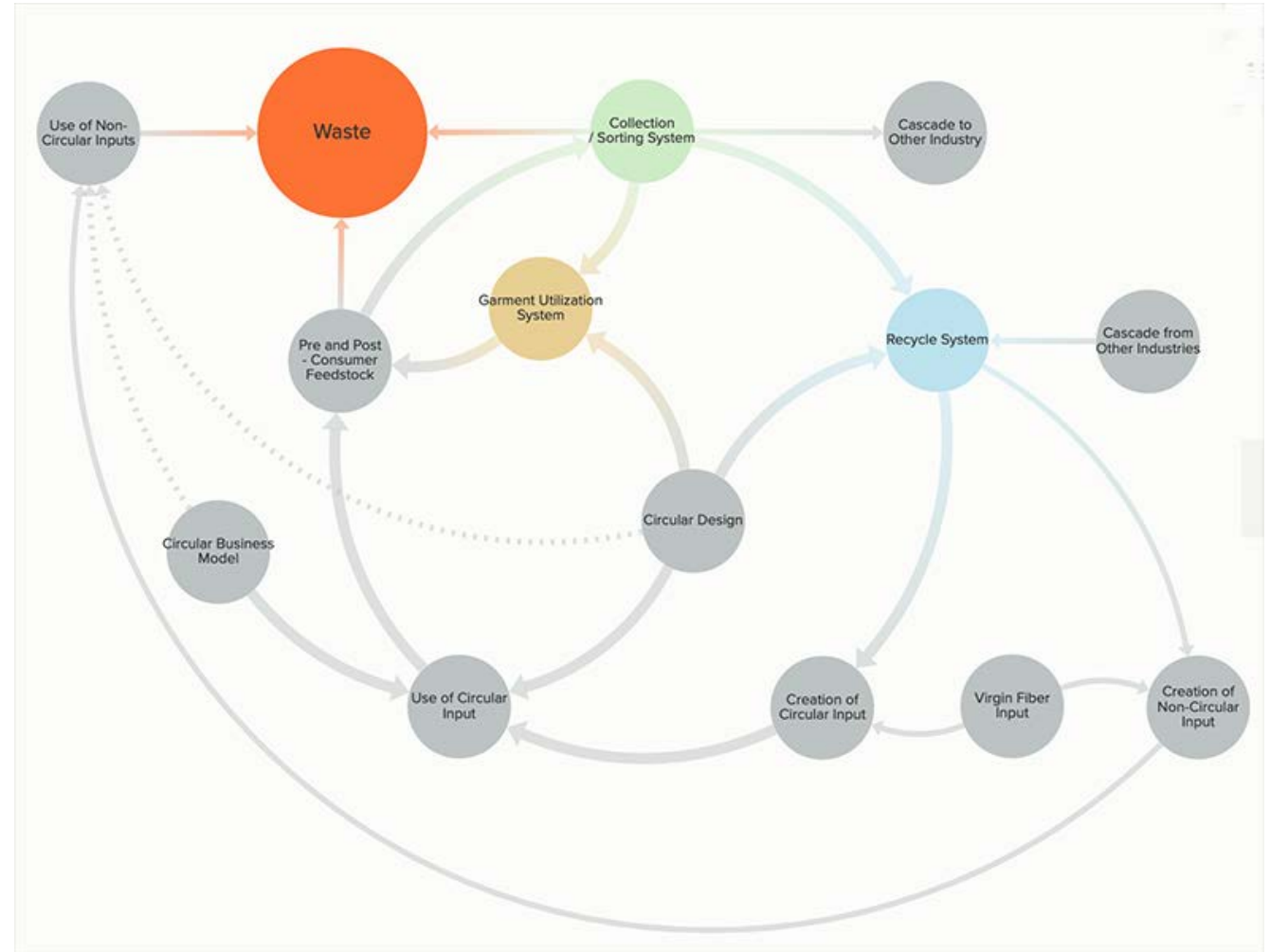
+ FM Usage: Sub-Sector and Sector Estimated Averages (%)



- H&H sub-sector had the highest cotton usage. The fiber and usage breakdown closely resembles Apparel (S/M)

Home and Hospitality Round Table: Project in Development

- We are in process of connecting partners across the hospitality and recycling industries to get more used hospitality textiles into recycling facilities via their laundry partners.



Home and Hospitality Round Table: Project in Development

- Sheeting and towels are consistent weights and fibers, and can be easily recycled once a collection system is implemented, which would divert large quantities of textiles from landfills and back into feedstock.



Home and Hospitality Round Table: Project in Development 2

- The longer term vision also involves leveraging hospitality locations as neighborhood collection sites, which can then in turn further increase the uptake into the system.



Thank you



© Copyright Notice

This presentation is protected by U.S. and International copyright laws.

Textile Exchange welcomes you to use slides from this collection for your presentations on the condition that:

- The slides are not altered from the way it is presented in its original format, this includes changing colors and style.
 - The Textile Exchange logo should not be removed.
 - Adding logos and/or content is not permitted without written permission from Textile Exchange.
- Any presentation using this content or any form of this content should acknowledge Textile Exchange as the author.