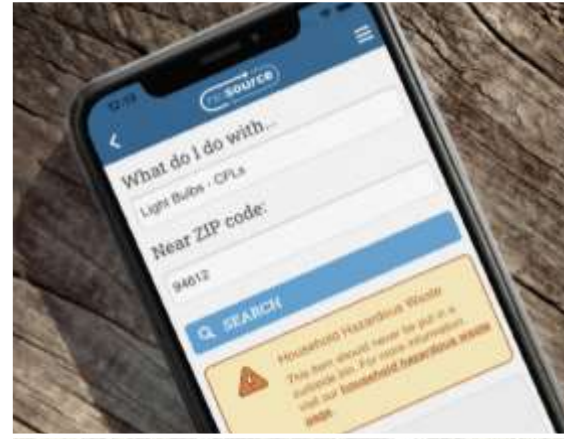




Compost and Mulch Procurement Strategies from Alameda County

Kelly Schoonmaker, RLA, LEED AP
Program Manager

May 3, 2022





- Albany
- Berkeley
- Piedmont
- Emeryville
- Oakland
- Alameda

• San Leandro

- Castro Valley SD
- Oro Loma SD
- Hayward

• Dublin

• Livermore

• Pleasanton

• Union City

• The County of Alameda

• Fremont

• Newark

MARIN

CONTRA COSTA

SAN FRANCISCO

SAN MATEO

SANTA CLARA

SAN JOAQUIN

STANISLAW

What are we required to procure?

City of Fremont:

- **Population: 234,239**
- **Procurement Target: 18,739 tons ROWP**
 - **Compost CY: 25,737**
 - **Mulch CY: 62,464 (600 lb/CY)**

California Department of Resources Recycling and Recovery
SB 1383 Procurement of Recovered Organic Products Calculator Tool

PROCUREMENT TARGET & PLANNING

STEP 1: Jurisdiction Name and Reporting Year

| Jurisdiction Name (City, County, or City and County): | Reporting Year: |
|---|-----------------|
| | |

STEP 2: Annual Procurement Target

The jurisdiction population equals the number of residents in a jurisdiction, using the most recent annual data reported by the California Department of Finance. Click here for the jurisdiction population estimates from the California Department of Finance.

| Description | Date | Unit |
|-------------------------------|------|--|
| Jurisdiction Population | | Residents |
| Per Capita Procurement Target | 0.08 | Tons of organic waste per California resident per year |
| Procurement Target | 0.0 | Tons of organic waste |

PRODUCTS

The conversion factors below, from 14CCR Section 18993.1(j)(3) of the regulations, convert the procurement target into quantities of recovered organic waste products.

1 Ton of Organic Waste in a Procurement Target Shall Constitute:

| Recovered Organic Waste Product | Quantity | Unit |
|--|----------|-------|
| Renewable Gas in the form of Transportation Fuel | 21 | CCF |
| Electricity from Renewable Gas | 242 | kWh |
| Heat from Renewable Gas | 22 | Items |
| Electricity from Biomass Conversion | 650 | kWh |

SB 1383 Recycled Organic Product Procurement Calculator
DRAFT

| | City | Cost | Notes |
|--------------------------|-----------------------|---------------|--------------------------------------|
| Population | Total Alameda County* | | Does not include Citrus and Oro Loma |
| Organic target (tons) | 5,562,526 | | Based on 2017 data |
| Organics procured (tons) | 125,002 | | |
| Organics procured (tons) | 8,731 | \$ 976,358.00 | from worksheet |
| Percent toward target | 7% | | |
| Organics needed (tons) | 114,272 | | see individual products |

How do you want to meet your target?

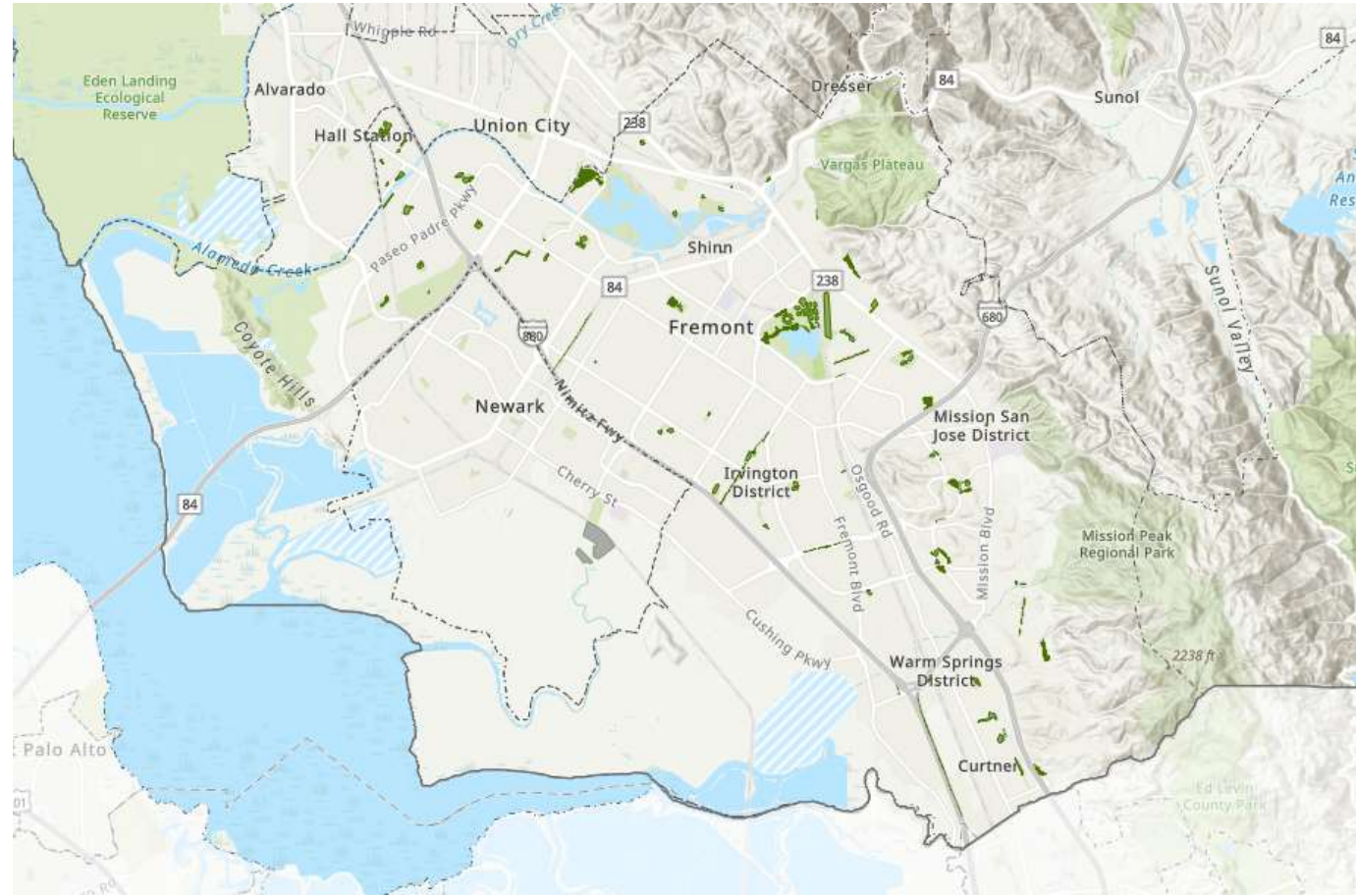
0% Compost 100% Mulch

This assumes no RNG and electricity of biomass are available or have already been applied to total below.

| Product | Quantity | Cost | Notes |
|-------------------------------------|----------|-------------------------|---|
| Compost needed (CY) | | \$ | 1.45 CY compost / 1 ton organic (per regulations); assumes 1 ton organic ton compost, and bulk density of 800 lb/CY |
| Mulch needed (CY) | 387,572 | \$ 18,376,586.78 | Assumes average bulk density of 600 lb/CY, \$15/CY delivered |
| Enter \$/CY Compost | | \$ 30.00 | |
| Enter \$/CY Mulch | | \$ 50.00 | |
| Total Additional Cost: | | \$ 18,376,586.78 | |
| Days out of compliance/Penalty low | | \$ | |
| Days out of compliance/Penalty high | 340 | \$ 169,753.38 | \$500/day value will appear once city is selected |
| Compost | 340 | \$ 1,195,067.57 | \$3,500/day value will appear once city is selected |

How much can we use?

- How much landscape area?



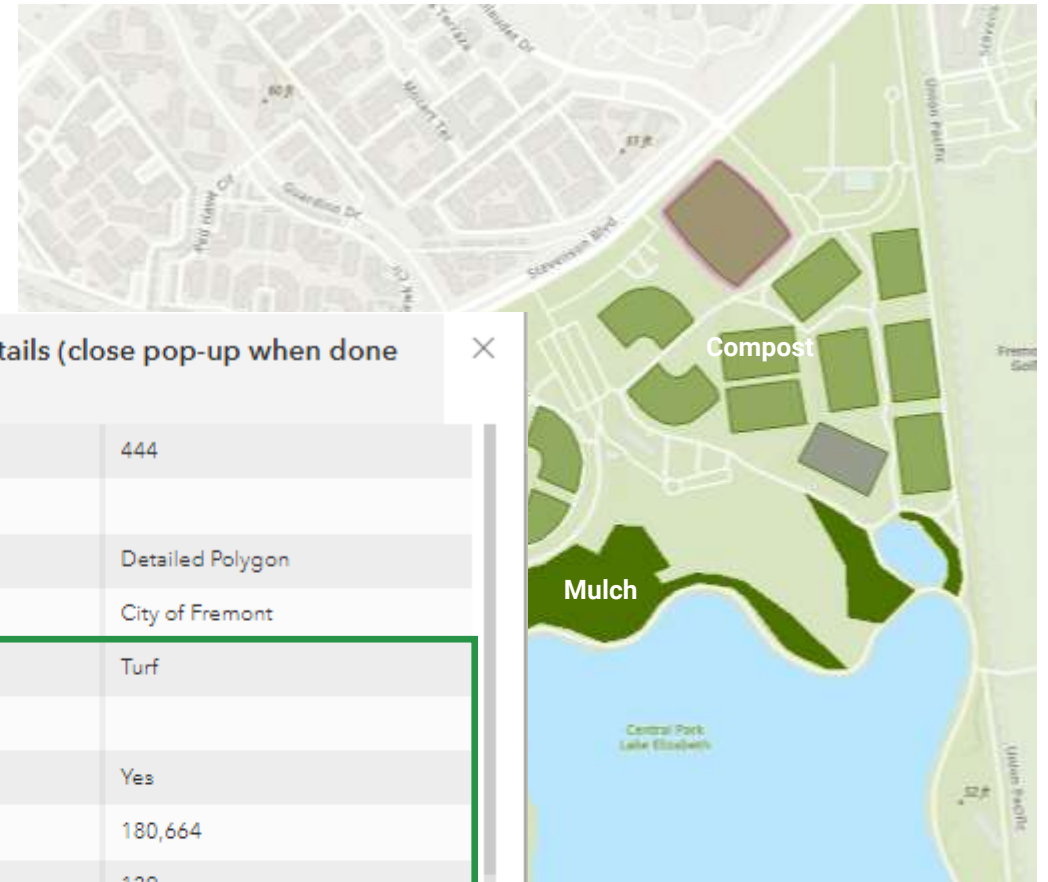
How much can we use?

- How much landscape area?*
- What areas can accept compost and mulch?
 - Annual application rates:
 - 0.25 inch compost
 - 2 inches mulch



How much can we use?

- How much landscape area?*
- What areas can accept compost and mulch?
 - Annual application rates:
 - 0.25 inch compost
 - 2 inches mulch



Landscaped Area Details (close pop-up when done reviewing)

| | |
|-----------------------------------|------------------|
| Site ID | 444 |
| Park Name/Address/APN | |
| Data Type | Detailed Polygon |
| City/Agency Name | City of Fremont |
| Type of Landscaping A | Turf |
| Type of Landscaping B | |
| Compost Application? | Yes |
| Compost Area (Sq. Ft.) | 180,664 |
| Compost (CY) | 139 |
| Compost (Tons) | 56 |
| Mulch Application? | No |
| Mulch Area (Sq. Ft.) | 0 |
| Mulch (CY) | 0 |
| Mulch (Tons) | 0 |
| Total Potential Organics Procured | 96.19 |

How much can we use?

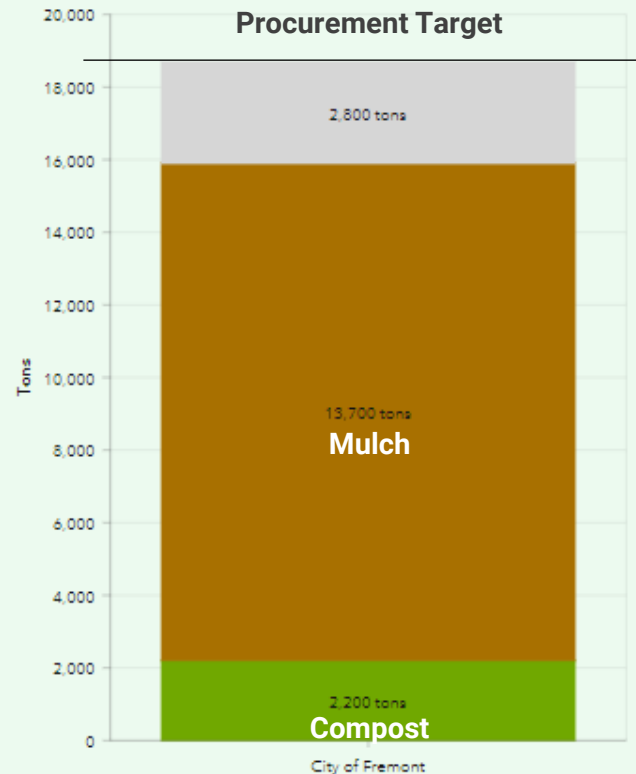
- How much landscape area?*
- What areas can accept compost and mulch?
- How much more compost and mulch do we need to use to meet target?

Annual Procurement Target
18,700 tons of ROWP

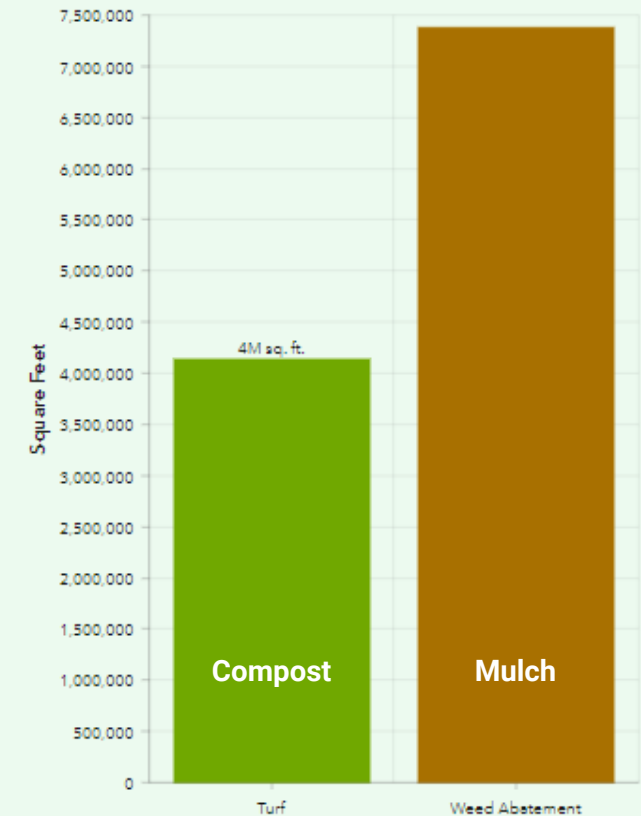
Total Potential Compost Distribution
3,200 cubic yards

Total Potential Mulch Distribution
45,600 cubic yards

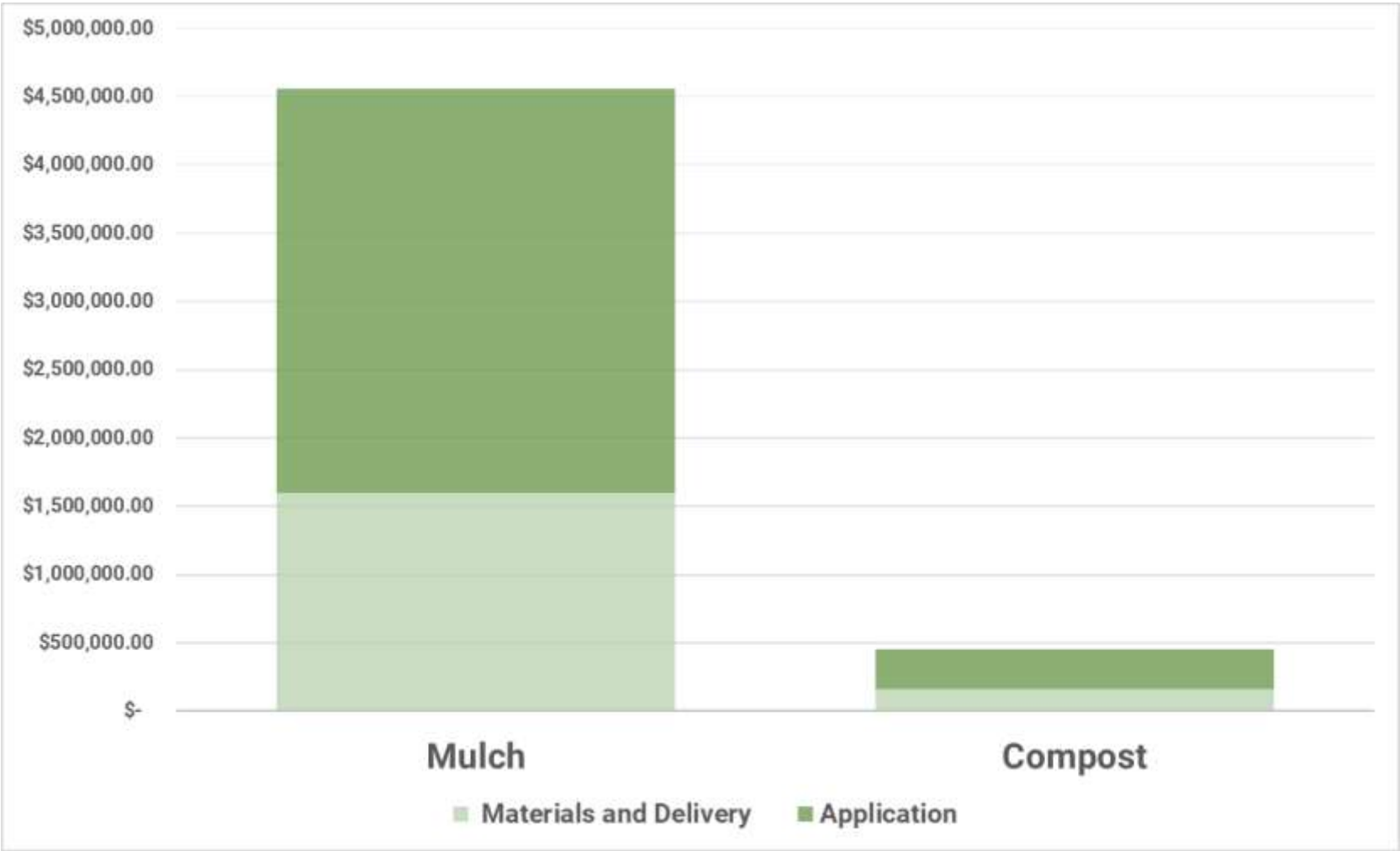
Annual Tons of ROWP That Can Be Used on City/County Landscapes



Total Area by Type of Landscaping



What will it cost?



PIG X-ING
Go Slow

COMMUNITY COMPOST HUB

SPONSORED BY:

- BAY AREA MAKER FARM
- FARM2MARKET
- STOP WASTE

What to do:

- 1: FILL OUT MAKER FARM WAIVER
(ONCE AND DONE) →
- 2: FILL OUT COMPOST HUB SURVEY
(EVERYTIME YOU PICK UP COMPOST)
- 3: FILL YOUR REUSABLE
CONTAINERS WITH COMPOST
OR BORROW OUR BURLAP
SACKS AND GET PLANTING!
- 4: ENJOY THE FREE COMPOST



Expanding distribution of free compost

Expanding carbon farming on ranches and farms



- Alameda County Resource Conservation District (RCD)
- Zero Foodprint

Water Efficient Landscape Ordinance



- Including private projects
- Make project team the DSP
- Include language in application to use compost/mulch on behalf...
- Require submittal of receipts for Certificate of Completion
- Good for cities with development happening

Lawn Conversion Rebates – Sheet Mulching

- Increasingly required or incentivized
- Can be integrated with little additional work
- DSP language in rebate application (prospective)
- Receipts required
- Good for cities who:
 - Administer rebates
 - Have good relationship with water agency



Direct Service Providers

- **Landscape Maintenance**
 - Direct contract and subcontractor
- **Landscape Construction**
 - Will be subcontractor
- **Important documents**
 - RFP or bid specs
 - Contract documents
- **Include requirements for:**
 - Materials - meet 1383 req's
 - Documentation - test data for mulch
 - Reporting – provide template





Thank you!
Kelly Schoonmaker
kschoonmaker@stopwaste.org