

SB 1383 Procurement Tools For Municipalities

Michael Wonsidler
County of San Diego
US Composting Council 1/24/23



OVERVIEW

- The Challenge
- Forming Your Team
- Identify Opportunities
- Outreach & Tools
- Examples from San Diego County
- Questions?

SB 1383 EXPANDS CALIFORNIA'S CLOSED LOOP ORGANICS RECYCLING ECONOMY

Demand for Recovered Organic Waste Products Drives Infrastructure Investments



Procuring Recovered Organic Waste Products is Vital to Closing the Loop



SB 1383 KEY DATES

2022



Provide Organics Collection Service to All Residents and Businesses



Establish Edible Food Recovery Program



Conduct Education and Outreach



Procure Recovered Organic Waste Products



Plan for Capacity

2024



Take enforcement action against non-complaint entities starting January 1, 2024.

RECOVERED ORGANIC WASTE PRODUCT PROCUREMENT RECORD KEEPING

Jurisdictions Must Maintain Records so CalRecycle Can Verify Compliance



SB 1383 Compliance Checklist

CHECKLIST REQUIREMENTS	COMPLIES		REMARKS
	YES	NO	
1. Procurement Requirements			
a. A written description for complying with the procurement requirements			
b. Name, physical location, and contact information of the entity from which the products were procured			
c. Invoices or similar records of procurement for both direct procurement and direct service provider			

REGIONAL PROCUREMENT OF RECOVERED ORGANIC WASTE PRODUCTS

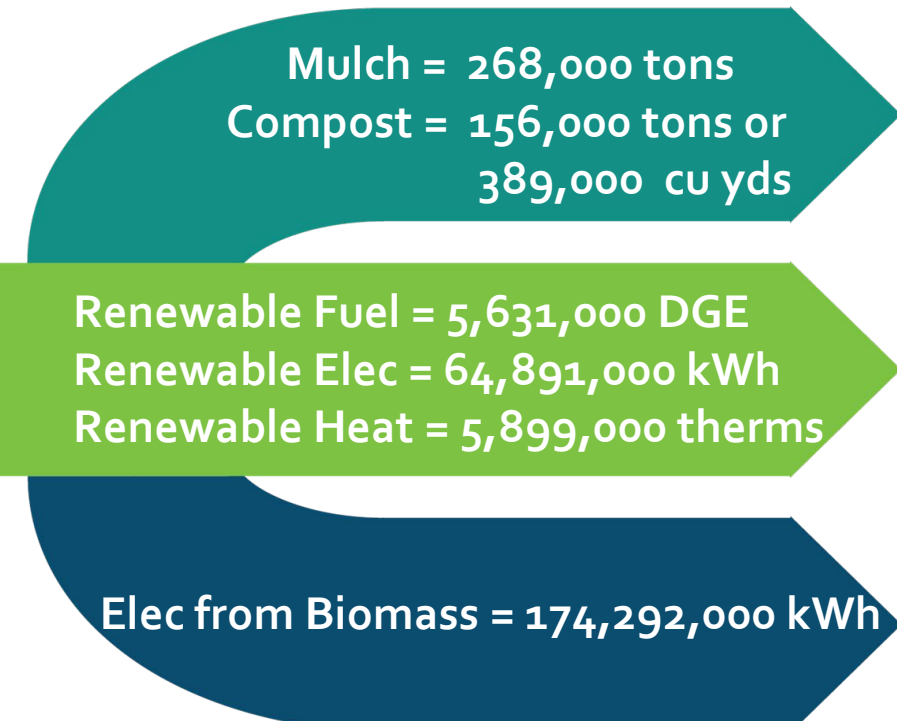
Procurement Formula

$$\text{Jurisdiction's Population} \times \text{0.08 Tons per Capita Factor} = \text{Jurisdiction's Procurement Target} \times \text{Conversion Factor for Products} = \text{Amounts of Recovered Organic Waste Products}$$

**San Diego Region
Population:
3,351,786 Residents**



**268,143
Tons of Raw
Organic Waste**



PROCUREMENT TARGET

MEETING 100% OF THE PROCUREMENT TARGET USING ONE PRODUCT

The quantity of each product below reflects how much a jurisdiction would need to procure to meet 100% of their procurement target through just one product.

Recovered Organic Waste Product	Quantity Procured Annually	Unit
Compost	23,000	tons
Mulch	40,000	tons
Renewable Gas (Transportation Fuel)	840,000	DGE
Renewable Gas (Electricity)	9,680,000	kWh
Renewable Gas (Heat)	880,000	therms
Electricity from Biomass Conversion	26,000,000	kWh

Application to achieve target (acres)

	Mulch	Compost
1 inch	1,186	742
2 inches	593	371

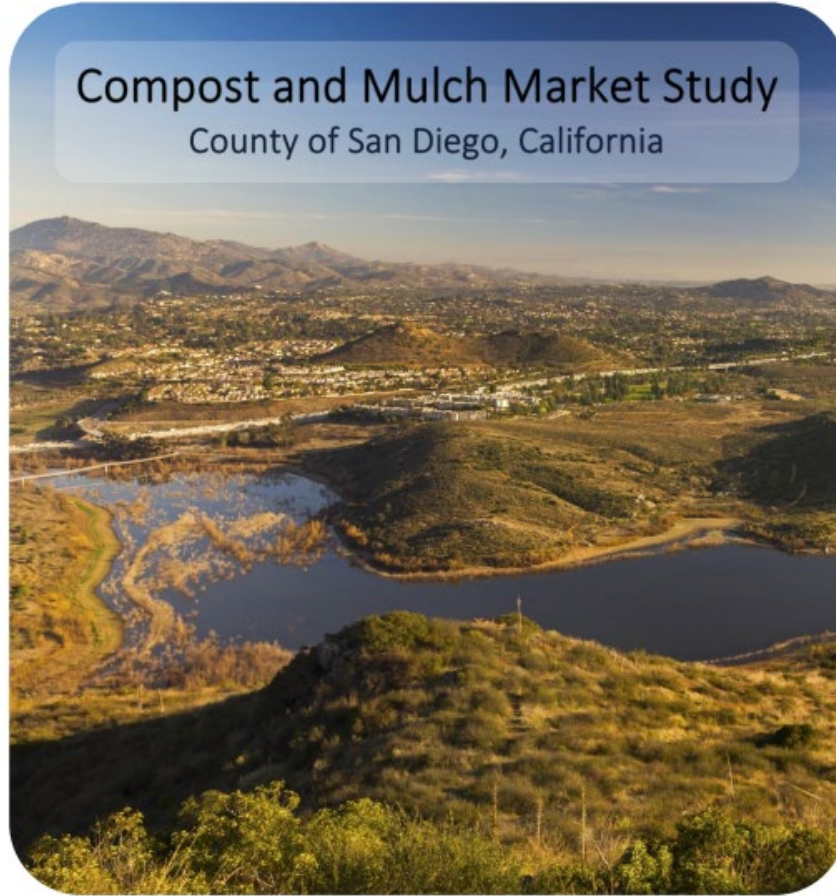
Dept. (includes bldgs., lots, etc.)	Acres
Park and Recreation	46,470
Airports	2,672
Inactive Landfills	977
Sheriff	672
General Services	605
Public Works	537
Total:	52,227

FORMING A TEAM

- ▶ Departments, Jurisdictions and Agencies
 - ▶ Internal Working Group
 - ▶ Waste, Water, Parks & Recreation, General Services, Public Works, Purchasing, etc.
 - ▶ Cities and County
 - ▶ State Agencies (Waste, Transportation, Colleges/ Universities, Natural Resources, etc.)
 - ▶ Economic Development & Chambers
- ▶ Industry Members and Associations
 - ▶ Compost and Mulch
 - ▶ Landscaping (Companies, Design, Architects, etc.)
 - ▶ Agriculture (Farm Bureau, RCD, Cooperative Extension, etc.)
 - ▶ Water Quality/Quantity
 - ▶ Building
- ▶ Others!

Compost and Mulch Market Study

County of San Diego, California



Compost and Mulch Market Study

Completed May 2020



1.5 Million Tons
COMPOSTABLES/ORGANICS
Landfilled Diverted



3 to 4 Million Cubic Yards
COMPOST AND MULCH
Recovered Products

Water Quality/ Erosion Control & Landscaping Sectors

Current and Potential Compost and Mulch Sales

Sales



Current Sales

Potential Sales



EDUCATION & OUTREACH

- **SB 1383 Internal Working Group**
 - Monthly Meetings
 - Presentations & Trainings
 - Involvement of Key Departments and Staff
 - Purchasing and Contracting
 - Contract Managers, Purchase Card Holders
 - Resources
 - Tracking and Reporting

RESOURCES: POLICY/CONTRACT

- ▶ Adoption of a Policy or Ordinance: **EP3 Implementation Guidance for Recovered Organic Waste Products**
- ▶ Includes procurement and recordkeeping requirements for compost, mulch, renewable natural gas, and electricity from biomass.
- ▶ Language for future contracts with an enforceable mechanism (e.g., No payment to contractor for ineligible product)
- ▶ Amend existing contracts if potential to be used to procure significant volumes

County of San Diego
Department of Purchasing and Contracting
PURCHASING PROCEDURES GUIDE

SUBJECT: Environmentally Preferred Procurement Policy (EP3) P 0204
Implementation Guidance- Recovered Organic Waste Products

Page 1 of 5

Purpose To provide guidance on the procurement of recovered organic waste products including mulch, compost, renewable gas, and electricity from biomass as an extension of Board Policy B-067 for Environmentally Preferred Procurement.

Background SB 1383 requires cities, counties, or a city and county to annually procure a quantity of recovered organic waste products that meets or exceeds its current annual recovered organic waste product procurement target.

RESOURCES: ASSISTANCE

- ▶ Locations to buy SB 1383 eligible materials
- ▶ Purchase agreement for compost, mulch, and related products
- ▶ Tip sheets by use (Parks, Ballfields, Landscapes, Weed Suppression, Medians, etc.)

SB 1383 Eligible Compost or Mulch Product Vendors

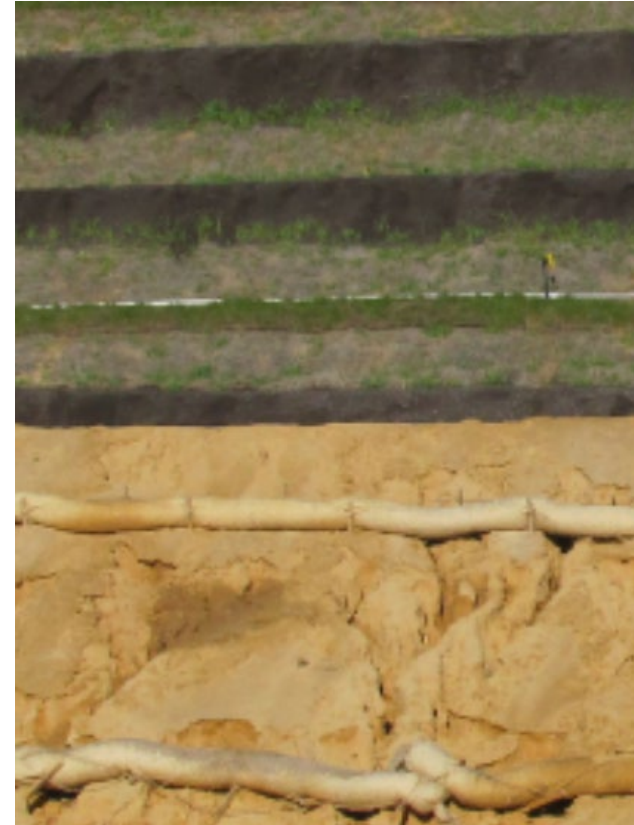
Facility	Address, Phone Number, Website	SB 1383 Eligible Products	
Miramar Greenery* https://www.sandiego.gov/environmental-services/miramar/greenery	Address: 5180 Convoy Street, San Diego, CA 92111 Phone: 858-694-7000	<ul style="list-style-type: none"> • Compost 	<ul style="list-style-type: none"> • 2" Mulch, 4" Mulch
Agri Service 2 Locations https://agriserviceinc.com/	<i>El Corazon:</i> 3210 Oceanside Blvd., Oceanside, CA 92056 Phone: 760- 439-9920 <i>Otay Compost Facility:</i> 434 Alta Road, San Diego, CA 92154 Phone: 760- 214-1842	<ul style="list-style-type: none"> • Humic Compost 	<ul style="list-style-type: none"> • Orchard Mulch • AG Grind • Everbloom Mulch • Garden Blend Mulch • County Club Blend
A-1 Soils, Martin Marietta 3 Locations Phone: 858-715-5600 https://a1soils.com/locations.html	<i>Miramar Soils:</i> 9229 Harris Plant Road, San Diego, CA 92145 <i>Hollister Soils:</i> 389 Hollister Street, San Diego, CA 92154 <i>Slaughterhouse Soils:</i> 12560 Highway 67, Lakeside, CA 92040	<ul style="list-style-type: none"> • A-1 Lifelike 3/8" Compost • A-1 Lifelike 1/8" Humus 	<ul style="list-style-type: none"> • Native Forest Mulch • A-1 Bedding Mulch
Plant's Choice Phone: 619-585-9909 https://plantschoice.com/	Address: 1700 Maxwell Rd, Chula Vista, CA 91911	<ul style="list-style-type: none"> • Organic Soil Amendment 	<ul style="list-style-type: none"> • Special Brush Mulch 200 • FF Mulch 200 • Wood Chip Mulch

RESOURCES: EXAMPLES



Around storm drains for watershed protection

Giveaways



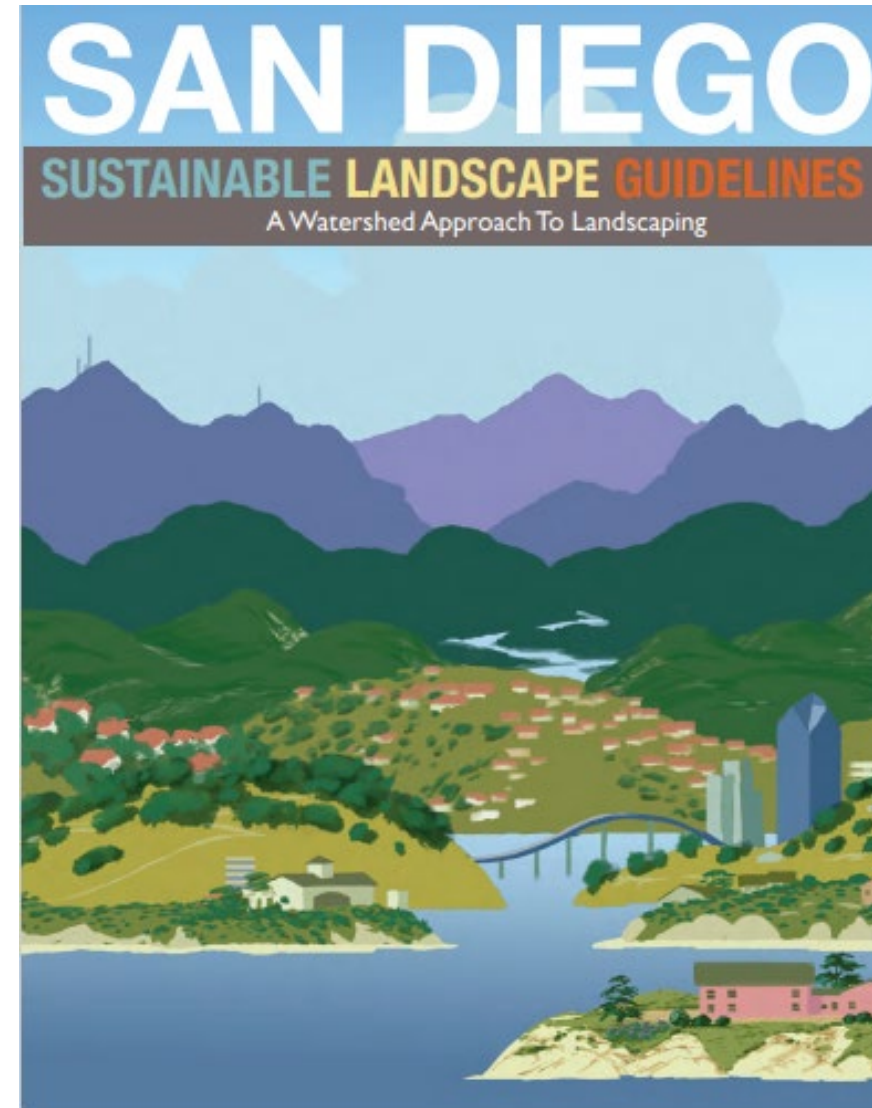
Erosion control (outperform straw waddles)



Construction projects

BEST PRACTICES/PROMOTION

- ▶ San Diego Sustainable Landscapes Guide
- ▶ Landscape Certification
- ▶ ReScape California [ReScapeca.org](https://rescapeca.org)
 - ▶ [ReScape Qualified Professionals Directory](#)
- ▶ CalRecycle/ CALTRANS Trainings & BMPs



Compost Best Management Practices

Aligns with Climate Action Plans & complies with state requirements.

Improves Stormwater Quality and Reduces Erosion

- Significantly reduces runoff volume
- Nutrients and pollutants are decomposed by naturally occurring microorganisms

Carbon Benefits

- Encourages healthy soils **carbon sequestration!**
- Promotes establishment of vegetation

Improves Soil Structure and Nutrient Content

- Better plant health. Reduces need for chemical fertilizers, pesticides, and herbicides



Nature's Toolbox: Compost Utilization for Storm Water Management - Case Studies

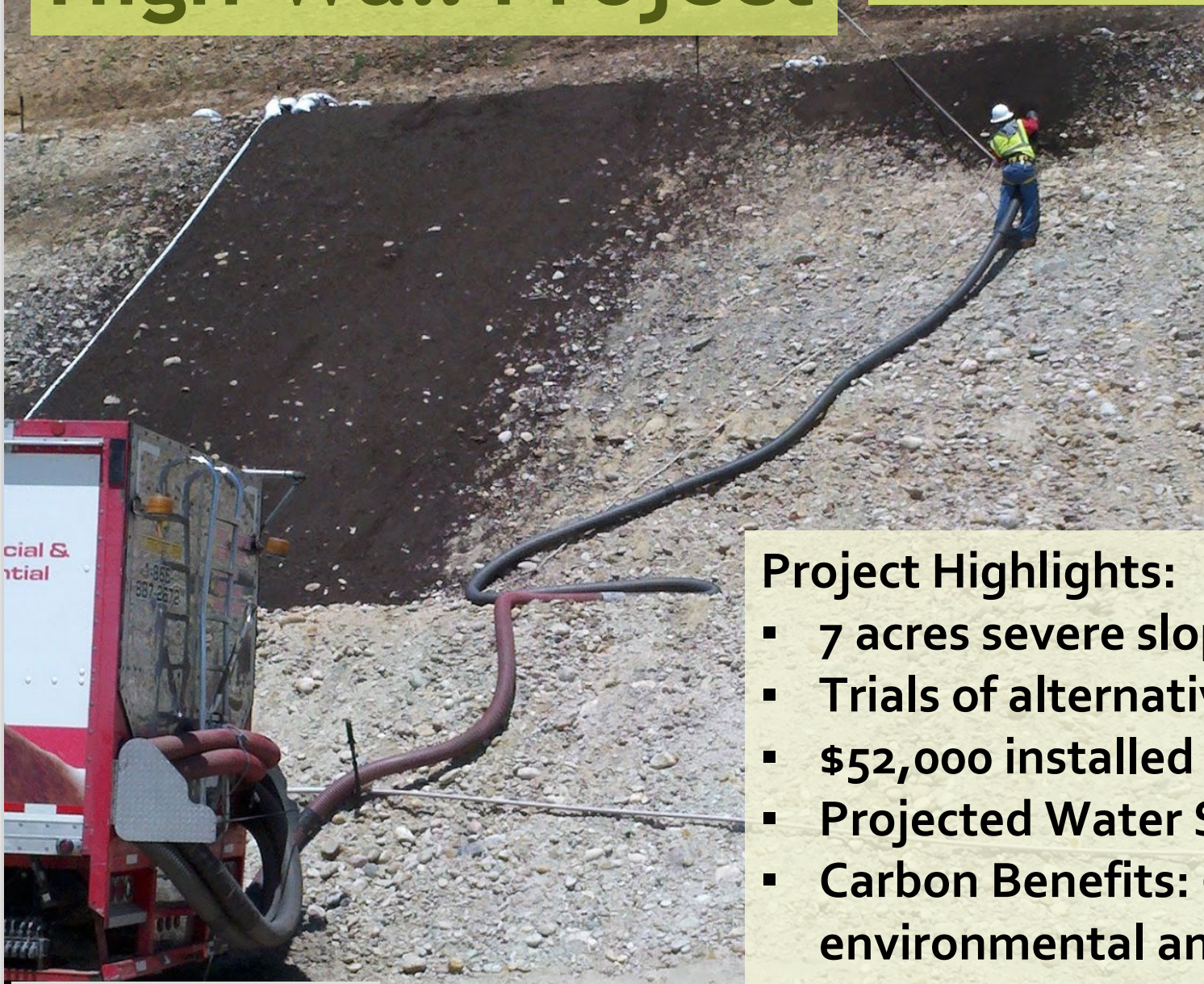


Compost Blanket & Berms vs. Hydromulch/Fiber Rolls



High Wall Project

Seeded Compost Erosion Control Blanket



Project Highlights:

- 7 acres severe slope. 964 CY of Compost. 1" depth.
- Trials of alternative BMPs failed on the steep slopes.
- \$52,000 installed cost*
- Projected Water Savings: ≥ 10 Acre-Ft.
- Carbon Benefits: 630 MTCO₂e and \$130,000 in environmental and public health benefits **

20

TOURS

PROJECT TOUR: COMPOST AND MULCH BMPs, MID-COAST TRANSIT CORRIDOR

Learn Best Practices for How Your Jurisdiction Can Use Compost and Mulch in Construction and Landscape Projects. Comply with SB 1383 Procurement Requirements and More!

AUGUST 4, 2021, 9:00AM

SCAN THE CODE TO REGISTER:

or, go to this link:

<https://forms.gle/teUSVre2tkMfdti38>

PRIORITY REGISTRATION ENDS JULY 23RD.
RESERVE TODAY, SPACE IS LIMITED!



WHO SHOULD ATTEND?

SANDAG Regional Planning Committee (and staff); watershed and landscape designers; environmental compliance managers (such as SWPPP QSPs/QSDs) for erosion control and water quality protection in transportation and development projects; anyone who will make decisions in specifying and using compost and mulch for BMPs and landscape projects

If you are a recycling/organics professional or stakeholder, please register and you will be added to a waitlist. This is to ensure the tour is prioritized for the targeted audience. Your registration will be confirmed after July 23rd, as space allows.

Questions? See registration link or send email to: recycle@sdcounty.ca.gov

Mulch BMP Tour UCSD 2021



[Video Link: Blue Line Trolley Compost and Mulch BMP Tour](#)

DEMO DAYS

Compost Equipment Demo



Join us to discuss the benefits of compost, view a range of equipment used for automated application, and learn about resources available to implement practices that increase soil health. We strongly encourage farmers to attend!

Hosted at the Carlsbad Flower Fields

Tuesday, January 31st
9:00am – 12:00pm



Register with this QR code or here: tinyurl.com/compost131

You will receive additional event information via email.

RESOURCE
CONSERVATION



Questions? Contact RCD of Greater San Diego
ag@rcdsandiego.org | 619-562-0096

DONATION AND GIVEAWAYS

- ▶ Spring/ Fall Planting Season
- ▶ Compost Awareness Week
- ▶ Engaging Public Officials
- ▶ Schools, Community Gardens, General Public
- ▶ Farms



ENGAGE DESIGN PROFESSIONALS

- ▶ Compost and Mulch Design Competition
- ▶ Promote compost and mulch toolkit
- ▶ Showcase local examples
- ▶ Incentives to replicate examples and tailor to local conditions
- ▶ Scholarship Potential

2023 COMPOST & MULCH DESIGN AND UTILIZATION COMPETITION

Title Sponsor(s) (TBD) are pleased to invite students, architects, engineers, and designers from around San Diego County to take part in the 2023 Compost & Mulch Design and Utilization Competition. This multidisciplinary competition is part of a continued push to enhance and protect vulnerable ecosystems. It recognizes innovation that redefines compost design through the implementation and adoption of proven techniques and novel approaches, programs, and aesthetics.

The participants should take into consideration existing best practices and research; advances in application technology; the establishment of new design and proven scientific methods to solve land management challenges; logistics in use and application of compost; the exploration of sustainable systems, climate resilience and adaptation, and nature-based design approaches for projects in the following categories: carbon sequestration, erosion control, fire remediation, healthy soils, stormwater management (including low impact development & green infrastructure), and water conservation all contained within CalRecycle's Compost and Mulch Use Toolbox.

CalRecycle's Compost and Mulch Use Toolbox

This competition is an investigation of the public and private space and the role of climate positive design that yields multiple ecosystem benefits and more sustainable land management systems.

DESIGN PARAMETERS

The intent of the competition is to create a pilot project that serves as a teaching tool for inspiration and wider adoption of similar practices in San Diego County.

Project and site should be:

- Located in San Diego County (if wishing to participate in compost donation incentive)
- 1 acre or less
- Project design should utilize CalRecycle's Compost and Mulch Use Toolbox in applying research in one or more of the following design categories: carbon sequestration, erosion control, fire remediation, healthy soils, stormwater management (including low impact development & green infrastructure), and water conservation.

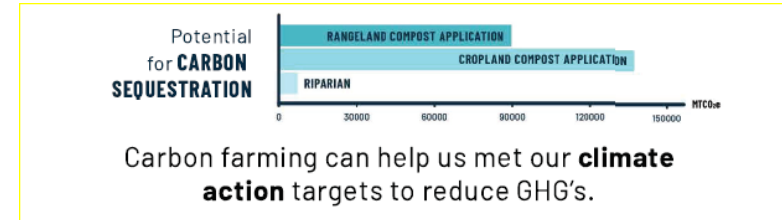
Architects, students, engineers, and designers are invited to participate in the competition. We encourage you to have multidisciplinary teams.

AWARDS

Winners and honorable mentions will be promoted by San Diego American Society of Landscape Architects press release network (with an aim for promotion in Landscape Architecture Magazine). We are anticipating some type of scholarship incentive as well as a donation of compost material to build the winning design to operate as an educational pilot project. However, these donations and scholarships are dependent on sponsor involvement moving forward and details will be forthcoming.

CLIMATE ACTION/ CARBON FARMING

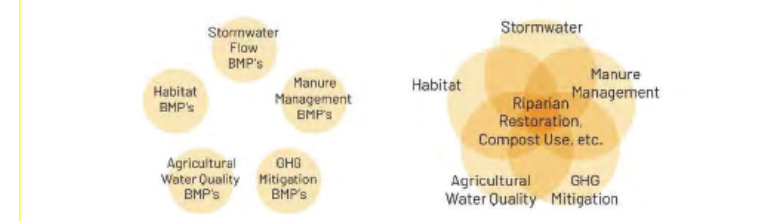
- ▶ Marin Carbon Project
- ▶ California Healthy Soils Initiative
- ▶ Sustainable Agriculture
- ▶ Compost = Carbon sequestration + Climate Resilience
- ▶ Pilot Projects for Carbon Farming



Create incentives that recognize the climate services provided by farmers who practice carbon farming.



Alignment of regulations so that they reward carbon farming. For example, ensuring that riparian species habitat creation will result in positive outcomes for a farmer, as opposed to added regulation, could encourage implementation of this climate-smart practice, which is also a best management practice (BMP) for several other programs.



Questions?

Michael Wonsidler
Program Manager
County of San Diego Waste Planning &
Recycling
(858) 694-2465
Michael.Wonsidler@sdcounty.ca.gov

