

Covered Electronic Waste (CEW) Payment Rate Considerations

Informal Workshop

CEW Recycling Program

Department of Resources Recycling
and Recovery (CalRecycle)

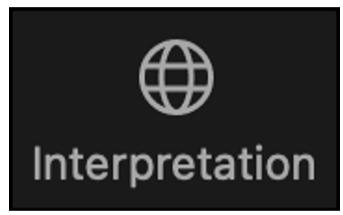
4/8/2023



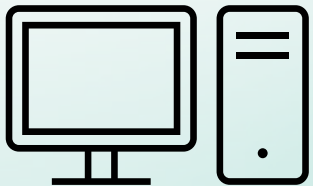
Interpretation Services | Servicios de Interpretación



In Person – Ask our team for a translation headset
En persona – Solicite asistencia si necesita audífonos de traducción



Zoom – Select your language on the Interpretation icon
Zoom - Seleccione su idioma en el icono Interpretación



Webcast - <https://video.calepa.ca.gov/#/>
Transmisión en línea - <https://video.calepa.ca.gov/#/>

Agenda

CEW Recycling Program Background

Ana-Maria Stoian-Chu, Section Manager, CEW Recycling Program

Proposed Adjustments to Payment Rates

Ana-Maria Stoian-Chu, Section Manager, CEW Recycling Program

Analysis of Net Cost Report Data

Matt Sheehan, Senior Environmental Scientist, CEW Recycling Program

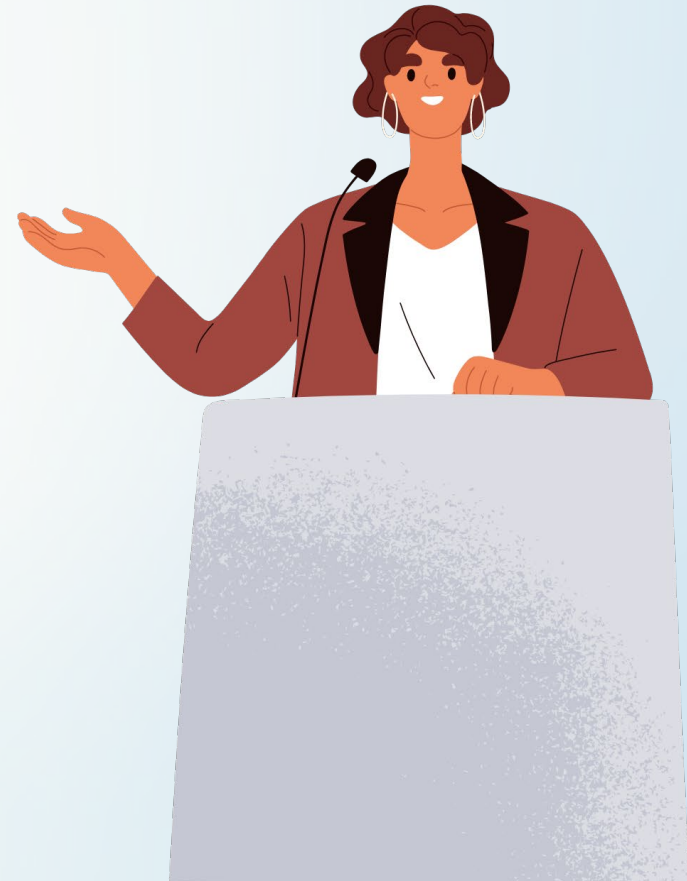
Questions

Moderated by:

Csilla Richmond, Associate Governmental Program Analyst, Regulations Unit

CalRecycle Welcomes Input from Interested Parties

- CalRecycle welcomes questions and feedback
- CalRecycle staff reads every comment
- CalRecycle wants to hear how potential regulations impact industry
- Public comments influence regulations

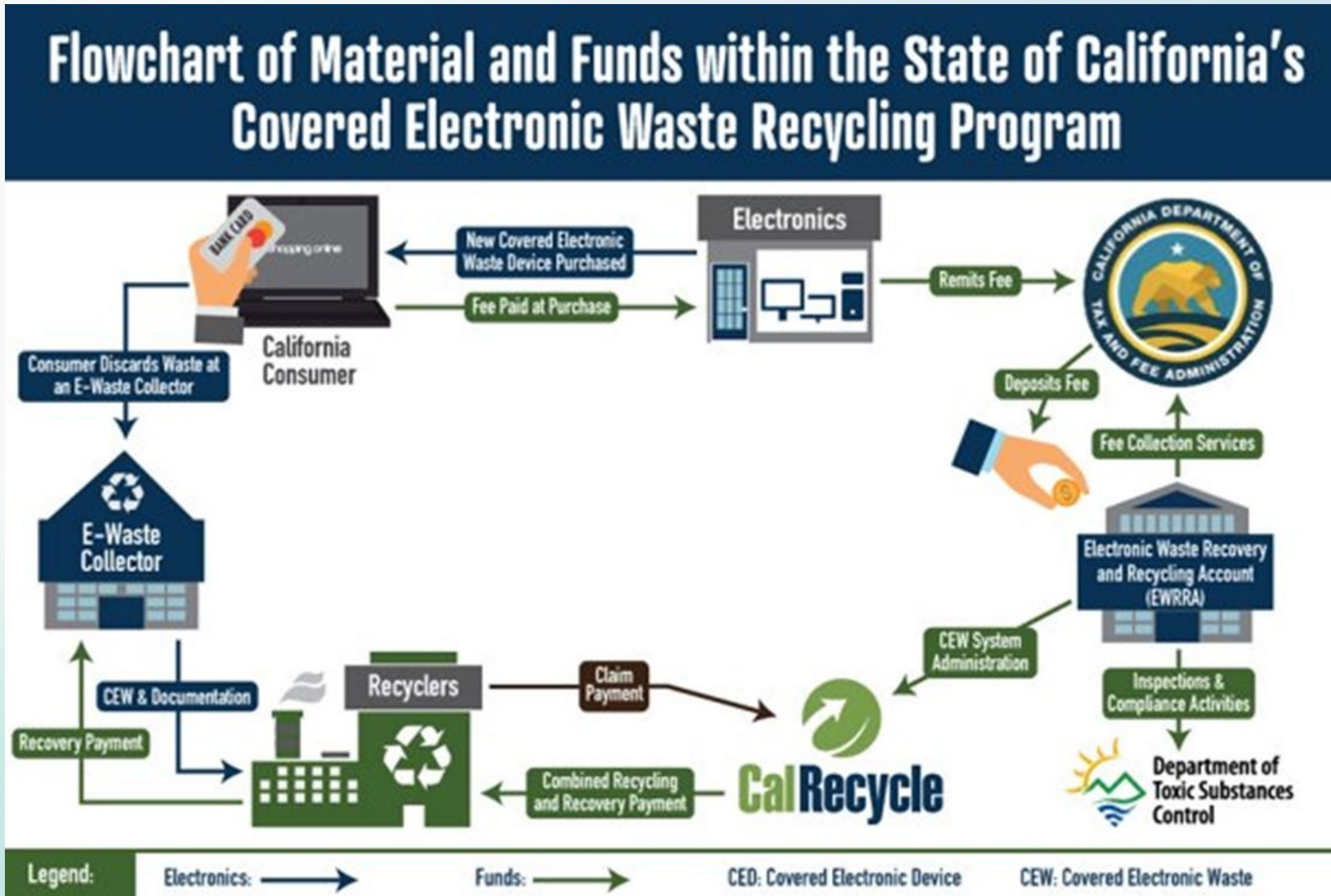


Background

The Electronic Waste Recycling Act:

- Established a payment system to support the recovery and recycling of CEW
 - Only compliantly documented CEW from CA sources are eligible
 - CEWs must be processed (cancelled) in CA
 - Treatment residuals must be properly managed (e.g., bare cathode ray tubes (CRTs) and bare plasma panels)
- Payment rates intended to cover average net costs of collection and recycling

CEW Recycling Program



Net Costs and CEW Payment Rates

- Regulations require Net Cost Reports to inform CalRecycle in its duty to set payment rates.
- Statute requires CalRecycle to establish:
 - ***an electronic waste recovery payment schedule to cover the average net cost for collecting, consolidating, and transporting CEWs and***
 - ***a recycling payment schedule to cover the average net cost to receive, process, and recycle each major category of CEW.***
- Converting reported costs of yesterday into standardized payment rates for the future is the challenge; Net Cost Reports are only part of puzzle.

Other Considerations

- Reconciling “average net costs” and seeming intent of Act is challenging
 - Payment rates based on averages do not cover all costs for all participants
 - Weighted averages reflect entire industry’s cost
 - Regulations anticipate unmet costs
- Market volatility
 - Increased Labor Cost
 - Regional Conflicts
- Depletion of CRT CEW
- Non-CRT devices are getting lighter

2024 Payment Rate Proposal

- CalRecycle proposes to **increase** the recovery rate for all CEW from **35** cents to **40** cents per pound.
- CalRecycle proposes to **increase** the recycling portion of the combined recovery and recycling CRT CEW payment rate from **63** cents to **73** cents per pound.
- CalRecycle proposes to **maintain** the recycling portion of the combined recovery and recycling non-CRT CEW payment rate at the existing level of **75** cents per pound.

Proposed Regulatory Text for Standard Statewide Recovery Payment Rate

14 CCR § 18660.33. Standard Statewide Recovery Payment Rate.

(b) Beginning July 1, 2023~~4~~, the Standard Statewide Recovery Payment Rate is \$0.35~~40~~ per pound.

Proposed Regulatory Text for Standard Statewide Combined Recovery and Recycling Payment Rates

14 CCR § 18660.34. Standard Statewide Combined Recovery and Recycling Payment Rates.

(b) Beginning July 1, 20234, the Standard Statewide Combined Recovery and Recycling Payment Rates are:

(1) \$01.9813 per pound for CRT CEW.

(2) \$1.105 per pound for non-CRT CEW.

Timeline



Present Proposed Rates the CalRecycle Monthly Public Meeting

April 16, 2024



Regulations Become Effective

July 1, 2024



On or before April 29, 2024

File with Office of Administrative Law

Net Cost Reporting

Reports for 2023 activity due March 1, 2024

- 300 reports submitted
 - 281 collector reports
 - 19 recycler reports

Analysis of as-reported 2023 data

- Trend of widely varying costs continued

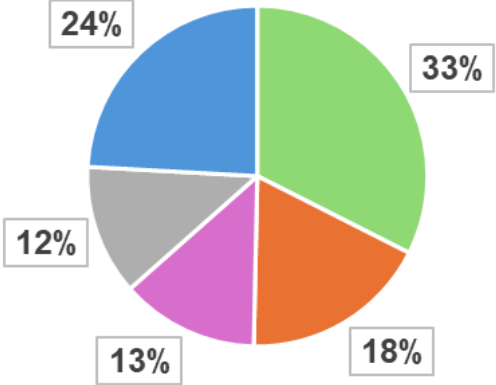
2023 Net Cost Reporting Recovery and Recycling Costs

Reporting Category	Proposed Payment Rate	Current Payment Rate	2023* Reports	% of all Reports < or = Std Pay Rate	Small Collector / Recycler	% of small Reports < or = Std Pay Rate	Large Collector / Recycler	% of large Reports < or = Std Pay Rate
Recovery	\$0.40	\$0.35	\$0.36	55%	\$0.32	58%	\$0.40	18%
CRT Recycling	\$0.73	\$0.63	\$0.51	69%	\$0.59	56%	\$0.43	100%
Non-CRT Recycling	\$0.75	\$0.75	\$0.53	78%	\$0.60	79%	\$0.46	100%

*CalRecycle excluded 1 CRT report and 39 recovery reports because the net costs were outliers.

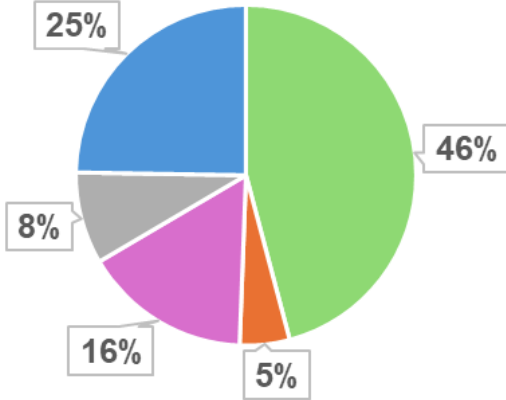
Recycling Costs Per Category 2023

CRT Recycling Costs



■ Labor ■ Residual Management ■ Cost to Purchase ■ Transportation ■ Overhead

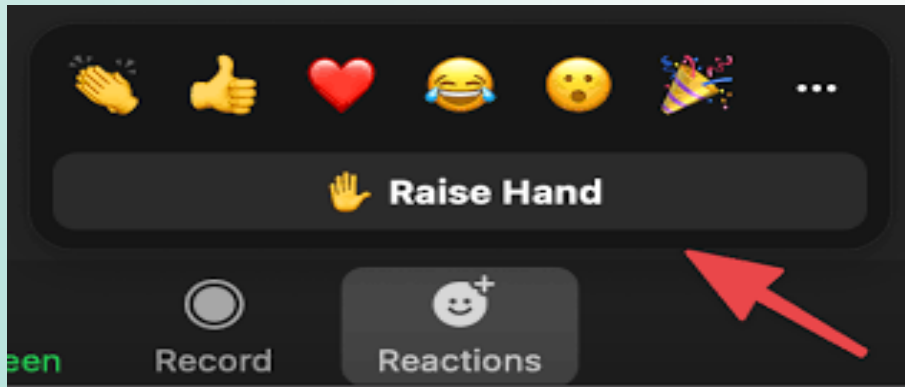
Non-CRT Recycling Costs



■ Labor ■ Residual Management ■ Cost to Purchase ■ Transportation ■ Overhead

Submitting Questions and Feedback

- To make a comment in-person, please line up at the podium.
- To make an oral comment via Zoom, please raise your hand and the host will unmute you.



- Submit written feedback or questions after today's presentation:
 - via CalRecycle's public comment portal: [Covered Electronic Waste Recovery and Recycling Payment Rates Public Comment Portal](#)
 - via email to regulations@calrecycle.ca.gov with the subject line "CEW Payment Rate Considerations 2024"
 - via mail (see [Public Meeting Notice: Covered Electronic Waste Workshop: Recovery and Recycling Payment Rates Considerations \(ca.gov\)](#) for details)

Sign-up for information related to regulations specific to the E-Waste Listserv.

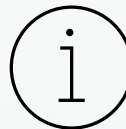
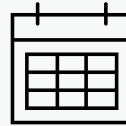
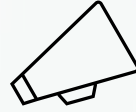
Sign up for information related to all CalRecycle Proposed Regulations: CalRecycle Proposed Regulations Listserv

More information is forthcoming and will be distributed through our listserv

Email: Regulations@CalRecycle.ca.gov

Workshop Public Comment Portal: Covered Electronic Waste Recovery and Recycling Payment Rates Public Comment Portal

This comment portal will close on April 15, 2024.



Ways to stay informed

The CalRecycle logo, featuring a white recycling symbol (three chasing arrows forming a triangle) inside a green circle, with the text "CalRecycle" in white below it. The logo is centered within a larger green circle that overlaps with other circles in a cluster.