



2024

Beverage Container Recycling

IN CALIFORNIA

Beverage Container Recycling Rates

$$\left\{ \begin{array}{l} \text{Number of} \\ \text{Beverage} \\ \text{Containers} \\ \text{Returned} \\ \text{in CA} \end{array} \right\} \div \left\{ \begin{array}{l} \text{Number of} \\ \text{Beverage} \\ \text{Containers} \\ \text{Sold in CA} \end{array} \right\} = \left\{ \begin{array}{l} \text{Beverage} \\ \text{Container} \\ \text{Recycling} \\ \text{Rate} \end{array} \right\}$$

**The Beverage Container Recycling Program (BCRP)
Recycling Rate Goal is 80%**

The 2024 BCRP Recycling Rate is 70%

$$\left\{ \begin{array}{l} \text{20.3 Billion Bottles} \\ \text{and Cans Returned} \end{array} \right\} \div \left\{ \begin{array}{l} \text{28.8 Billion} \\ \text{Beverages Sold} \end{array} \right\} = \text{70\%}$$



Collection Rates by Container Material Type



71%
Aluminum

Sales:
10.8 Billion

Returns:
7.7 Billion



60%
Glass

Sales:
3.18 Billion

Returns:
1.91 Billion



74%
#1 PET

Sales:
14.3 Billion

Returns:
10.5 Billion



62%
#2 HDPE

Sales:
173.5 Million

Returns:
107 Million



3%
#3 PVC

Sales:
27,836

Returns:
870



2%
#4 LDPE

Sales:
5.16 Million

Returns:
123,892



52%
#5 PP

Sales:
9.74 Million

Returns:
5.08 Million



22%
#6 PS

Sales:
221.66 Million

Returns:
49.44 Million



4%
#7 Other

Sales:
59.96 Million

Returns:
2.69 Million



13%
Bimetal

Sales:
50.68 Million

Returns:
6.37 Million



1%
WDS-BBP

Sales:
33.85 Million

Returns:
352,102

Program Participants

CRV Recycling Collection Distribution



17.28 Billion
Containers Collected



2.51 Billion
Containers Collected



0.47 Billion Containers Collected



1,269

**Recycling
Centers**

Primarily Privately
Owned Businesses

622

**Curbside
Programs**

166

**Dropoff
Programs**

122

**Community
Service
Programs**

Other Program Participants



161

Processors



5,750

Distributors



5,690

**Beverage
Manufacturers**

Program Participant Payments for 2024

	Consumer	Recycling Centers	Curbside Programs	Community Service/ Neighborhood Dropoff Programs
Total Containers	N/A	17,282,259,024	2,507,644,853	472,906,723
California Refund Value (CRV)	\$ 911,812,474	CRV passes through recycling centers as it goes to consumers.	\$131,351,419	\$32,278,658
Handling Fees	N/A	\$75,859,214	N/A	N/A
Curbside Supplemental Payments	N/A	N/A	\$15,000,000	N/A
Processing Payments	N/A	\$159,893,244	\$42,808,533	\$8,882,111
Administrative Fees	N/A	\$6,702,924	\$954,358	N/A

Participant Shares for 2024

The below figures show the percentage of CRV paid out by each certified recycling program and the percentage of each material type redeemed through each program.

Certified Recycling Programs

	Recycling Centers	Curbside Programs	Community Service/Neighborhood Dropoff Programs
CRV Paid Out	85%	12%	3%
Aluminum	86%	11%	3%
Glass	63%	31%	6%
PET	83%	14%	3%
HDPE	58%	35%	7%
WDS	99.9%	0%	0.1%

Grants and Other Payments for 2024

CalRecycle makes different payments to expand redemption sites, educate communities, and increase the amount of materials actually recycled into new products.

161 Certified Processors	Administrative Fees	\$26,509,409
8 Competitive Grantees	Beverage Container Recycling Grants	\$1,500,000
347 Local Governments	City and County Payments	\$8,962,899
10 Grantees	Pilot Project Recycler Grants	\$10,500,000
14 Local Community Conservation Corps	Local Conservation Corps Grants	\$3,356,365
15 Quality Incentive Payment Participants	Glass Quality Incentive Payments	\$6,297,504
4 Glass Beverage Container Manufacturers	Glass Market Development Payments	\$9,951,645
24 Plastic Reclaimers and Plastic Product Manufacturers	Plastic Market Development Payments	\$17,692,995

Rates Paid for Containers Per Pound at Recycling Centers

(Effective Jan. 1, 2025)

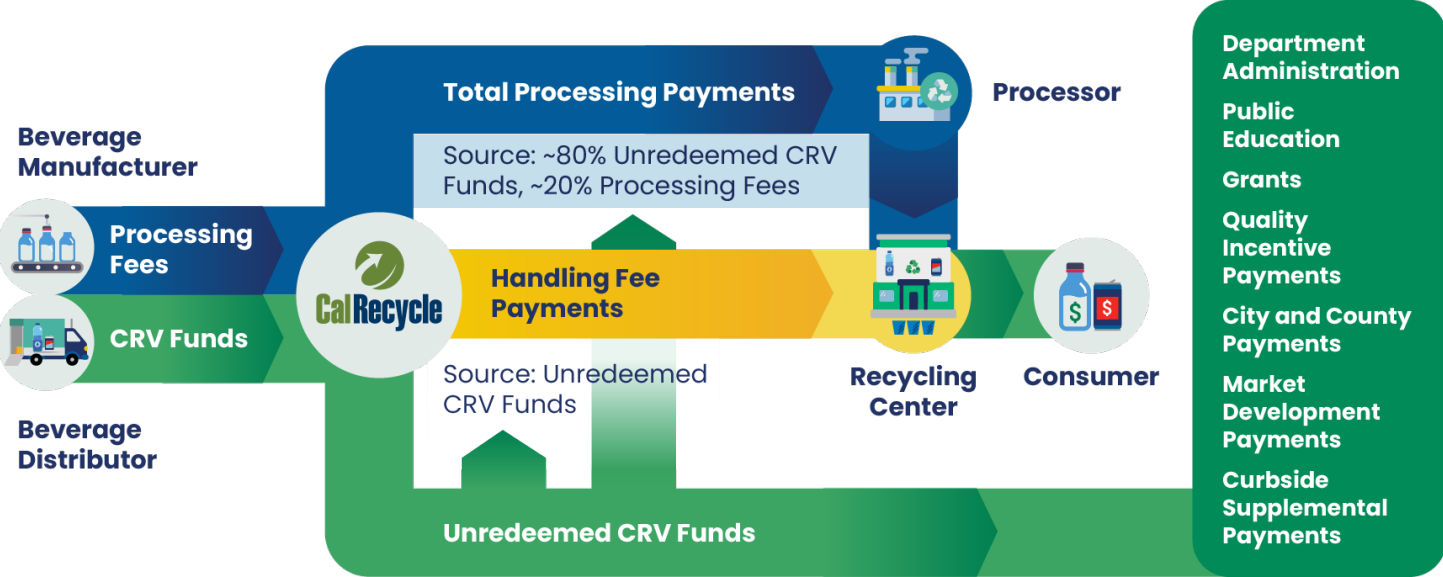
Recycling centers may issue CRV refunds by weight if customers do not request payment by count.

CalRecycle calculates the average number of containers per pound by conducting recycling center surveys.

Material Type	# of Containers per Pound	Refund Value per Pound
Aluminum	29.7	\$1.65
Glass	1.87	\$0.102
#1 PET	27.0	\$1.47
#2 HDPE	8.4	\$0.63
#3 PVC	9.70	\$0.48
#4 LDPE	39.5	\$1.98
#5 PP	10.9	\$0.55
#6 PS	109.5	\$5.47
#7 Other	3.1	\$0.31
Bimetal	8.2	\$0.41
WDS-Multi-Layer Pouch	33	\$8.25
WDS-Bag-in-Box	1.66	\$0.41
WDS-Paperboard Carton	15.18	\$3.79

Flow of Funds to Support Program Operation

Beverage Container Recycling Program funds pay to run the program, subsidize recycling participants, and expand redemption and demand for recycled materials.



Processing Payments and Fees

Beverage manufacturers' processing fees help pay processors for the cost to recycle materials whose scrap value doesn't cover costs.

The processing payments CalRecycle makes to processors fluctuate with the market value of materials.

2024 Processing Payments to Businesses:

\$211.6 MILLION

How Processing Fees and Payments Are Calculated

The formulas for determining the calculation of processing fees and payments are set by statute.

Processing payments equal the difference between the scrap values offered to recyclers and the sum of the actual costs of recycling for certified recycling centers, excluding centers receiving handling fees, plus a reasonable financial return. Processing fees equal the processing payments converted into pounds, then reduced based on the recyclability of the material type.

(Jan. 1 2025)

Material Type	Scrap Value per Ton	Cost per Ton	PP per Ton	PF per Container
Aluminum	\$1,352.68	\$860.22	N/A	N/A
Glass	\$3.24	\$216.93	\$213.69	\$0.00672
#1 PET	\$195.40	\$715.64	\$520.24	\$0.00091
#2 HDPE	\$187.83	\$1,033.63	\$845.80	\$0.00654
#3 PVC	\$0.00	\$1,625.76	\$1,625.76	\$0.05447
#4 LDPE	\$2.03	\$2,319.28	\$2,317.25	\$0.01907
#5 PP	\$10.34	\$2,080.72	\$2,070.38	\$0.01899
#6 PS	\$2.28	\$1,288.82	\$1,286.54	\$0.00382
#7 Other	\$1.44	\$1,412.10	\$1,410.66	\$0.14789
Bimetal	\$13.50	\$1,302.83	\$1,289.33	\$0.05110

Processing Payments Paid and Fees Collected in Calendar Year 2024 (Millions)

Material Type	Processing Payments Paid	Processing Fees Collected
Glass	\$89.879	\$19.807
#1 PET	\$113.649	\$11.768
#2 HDPE	\$6.184	\$1.720
#3 PVC	\$73.57 (exact amount, not in millions)	\$0.002
#4 LDPE	\$0.004	\$0.141
#5 PP	\$0.469	\$1.466
#6 PS	\$0.291	\$1.361
#7 Other	\$0.580	\$2.839
Bimetal	\$0.479	\$4.203
WDSBBP	\$0.049	\$0.138
Total	\$211.584	\$43.447

Handling Fees

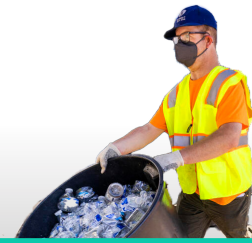
CalRecycle pays handling fees to help supermarket, nonprofit, and rural recycling center businesses operate in high-cost locations, giving consumers convenient places to recycle containers.

2024 Handling Fees:

\$75.9 MILLION



Enforcement Actions and Inspections During 2024



Beverage Container Manufacturers and Distributors

Compliance Audits Completed: **48**
Audit Findings: **\$15,772,030**

Processors

Load Inspections: **507**
Claims Denied or Reduced: **23**

Dealers (Retailers)

Inspections: **2,624**
Notice of Noncompliance Issued: **745**
Notice of Violation Issued: **599**

Recycling Centers

Inspections Conducted: **700**
Notice of Noncompliance Issued: **201**
Notice of Violation Issued: **98**
Investigations: **129**
Businesses Placed on Prepayment Controls: **94**
Probationary Reviews Completed: **331**
Handling Fee Reviewed: **85**
Handling Fee Denied: **6**

Legislative Bills Enacted in 2024

AB 2511

(Berman, Chapter 405, Statutes of 2024)

- Extends the sunset date of the plastic market development payment program from July 1, 2025, to July 1, 2027.

SB 156

(Committee on Budget and Fiscal Review, Statutes of 2020)

- Sets the handling fee rate for the 2024 - 2025 fiscal year until June 30, 2026.
- Requires CalRecycle to set a new handling fee calculation methodology in regulations to remain in effect through June 30, 2027.

SB 551

(Portantino, Chapter 983, Statutes of 2024)

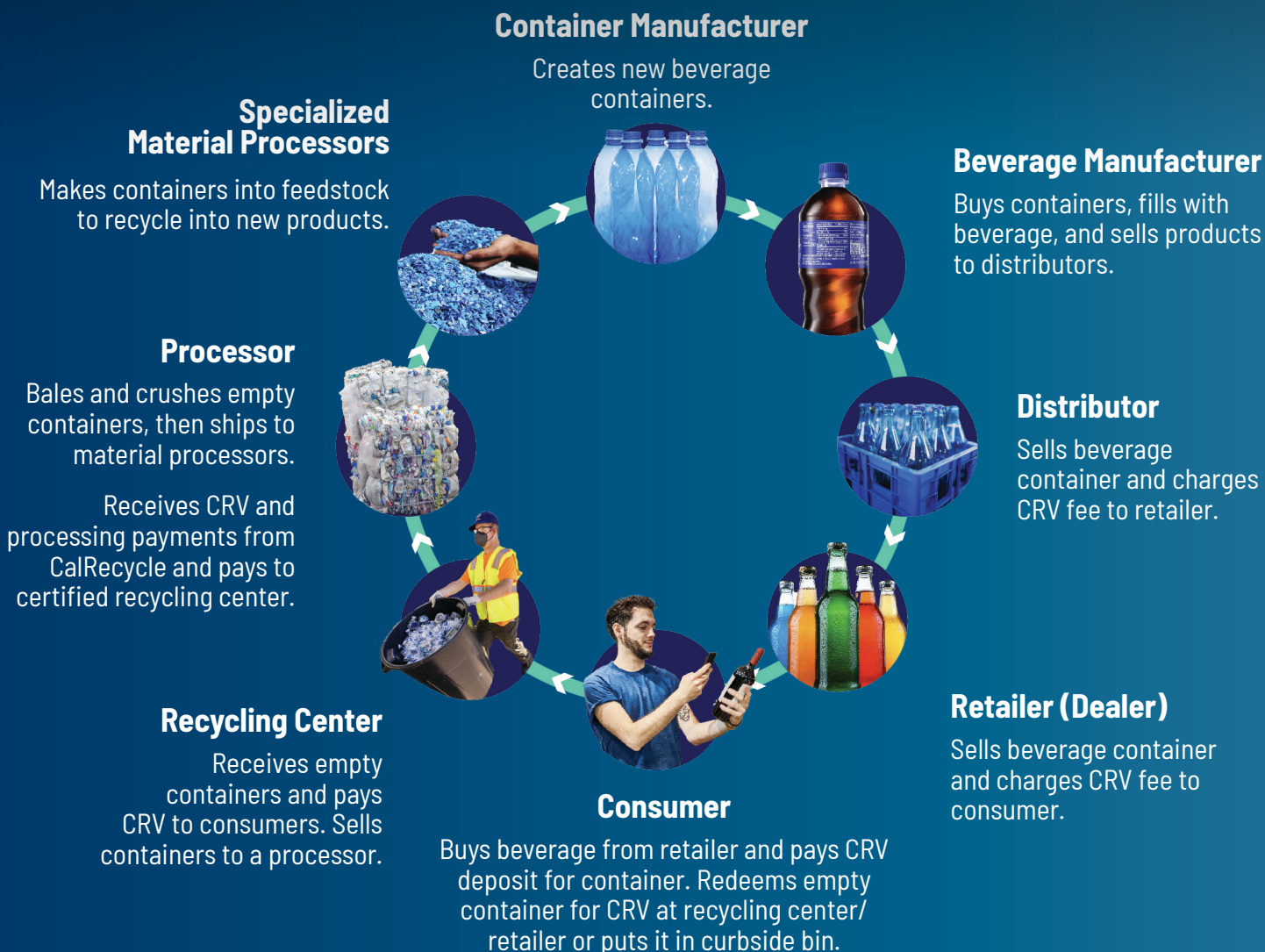
- Allows beverage manufacturers to submit consolidated reports for plastic beverage container postconsumer recycled content reporting.

SB 1113

(Newman, Chapter 182, Statutes of 2024)

- Extends the sunset date of the pilot project program from June 30, 2026, to January 1, 2034.
- Removes the pilot project's ability to serve a convenience zone on January 1, 2027.

Overview of Beverage Container Recycling Program



Flow of Consumer Funds through CRV Program

