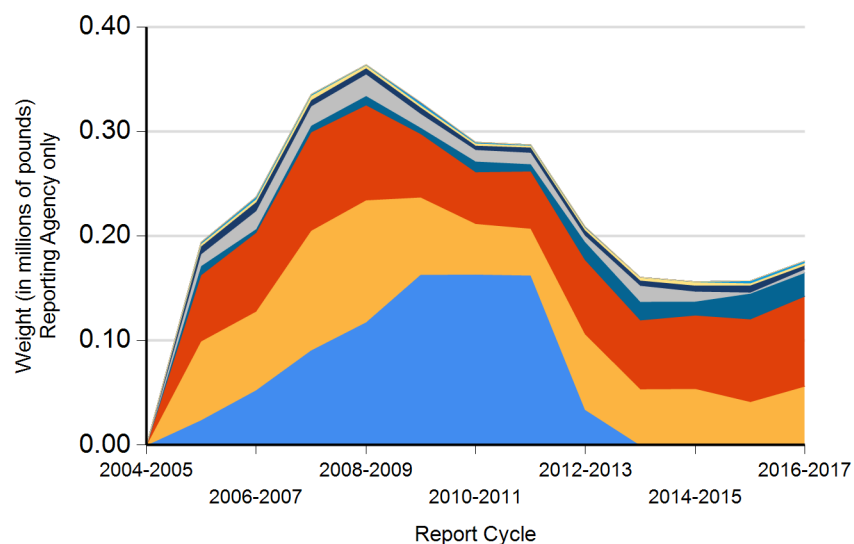




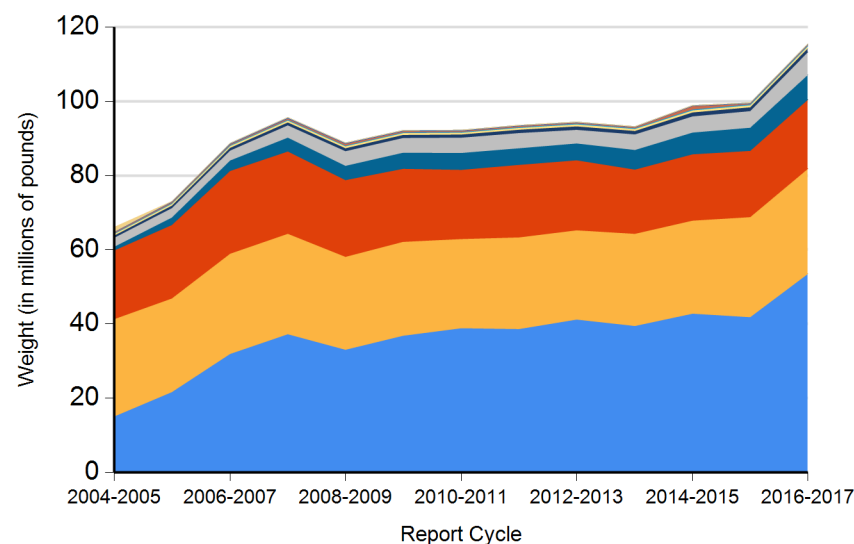
Form CalRecycle 303 Household Hazardous Waste Collection Information For 2016-2017

HHW Collection By Material Categories (City of El Cajon)



Aerosol Containers (UW)	Other
PCB-containing	Universal Waste (UW)*
Asbestos	Flammable and Poison
Oxidizer	Reclaimable
Acid	Electronic Devices (UW)
Base	

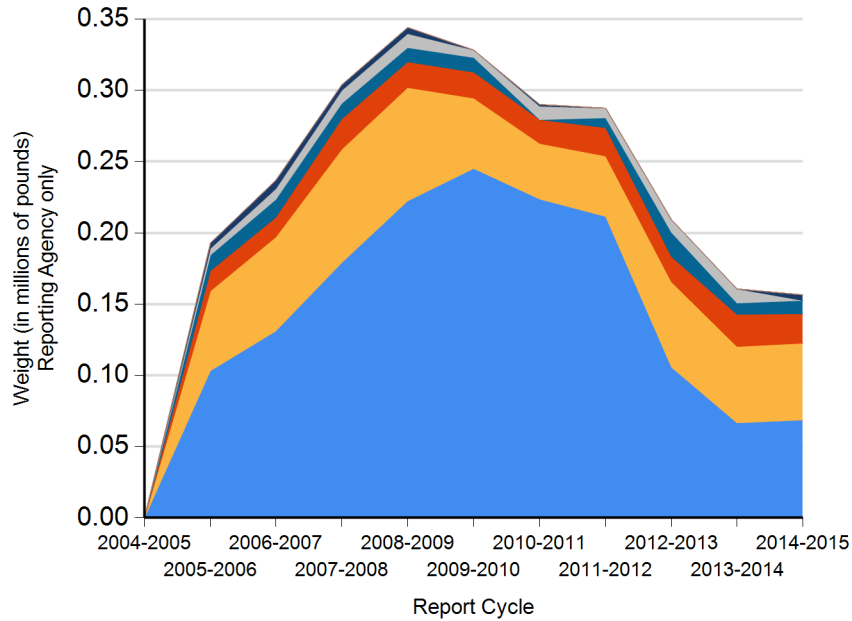
HHW Collection By Material Categories (Statewide)



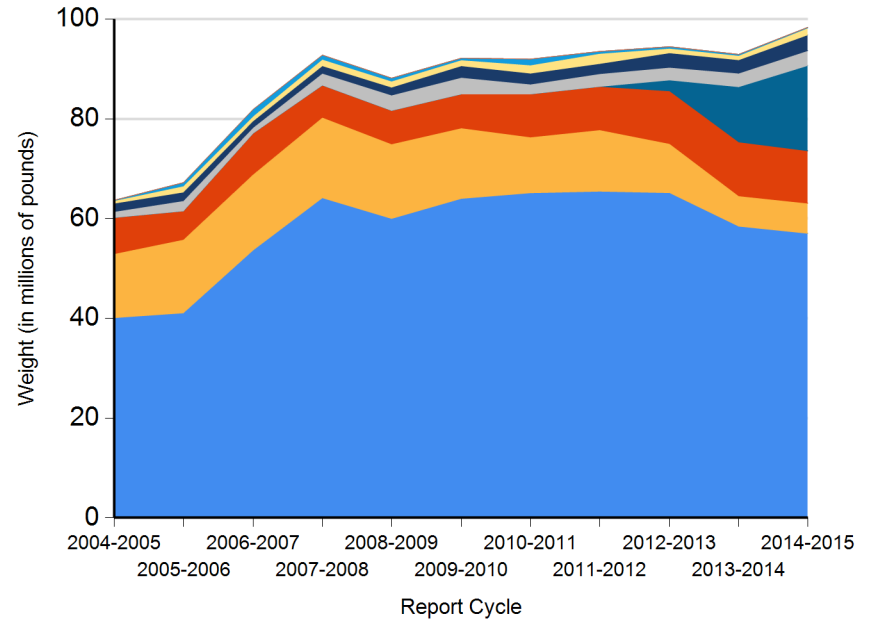
Aerosol Containers (UW)	Other
PCB-containing	Universal Waste (UW)*
Asbestos	Flammable and Poison
Oxidizer	Reclaimable
Acid	Electronic Devices (UW)
Base	



HHW Disposition By Disposition Method (City of El Cajon)



HHW Disposition By Disposition Method (Statewide)





Name of Public Agency Reporting: City of El Cajon

Contractor's Name: Psc Environmental Services, Llc

Participating Households: 1,514 **Method:** Number of Vehicles

Participating Households includes non-residential (CESQG,schools,nonprofits,etc.): No

Service Area Households: 25,000

Participants Represented by Reporting Jurisdiction/Agency (i.e., individual city(ies), county(ies), other agency(ies)):

El Cajon

Program Types:

Program Type	EPAID
Permanent Facility	CAH111000851



DEPARTMENT OF RESOURCES RECYCLING AND RECOVERY

1001 I STREET, SACRAMENTO, CALIFORNIA 95814 • www.CalRecycle.ca.gov • (916) 322-4027
P.O. BOX 4025, SACRAMENTO, CALIFORNIA 95812

Collection (pounds)	Material Type	Permanent Facility	Temporary (periodic) Facility	Mobile Facility	Recycle-only Facility	Door to Door (residential) Program	Curbside Program	Load Check	Other
Flammable and Poison	Flammable solids / liquids								
	Bulked flammable liquids								
	Oil-based paints	22,546							
	Paint Related Material (PRM)	43,100							
	Poisons	19,900							
	Reactive and explosive								
	Compressed gas cylinders	600							
	1 lb propane canister								
	Flammable and Poison subtotal	86,146							
PCB-containing	PCB-containing paint								
	Other PCB waste (includes ballasts)								
	PCB-containing subtotal								
Reclaimable	Antifreeze	3,000							
	Auto type batteries (motor vehicles)	2,300							
	Latex paint	51,096							
	Motor oil/oil products								
	Used oil filters (recyclables only)								
	Reclaimable subtotal	56,396							
Acid	Inorganic and organic acid	2,400							
Base	Inorganic and organic base	3,600							
Oxidizer	Neutral oxidizers, Organic peroxides, Oxidizing acid/base	1,800							
Asbestos	Asbestos								
Universal Waste (UW)*	Mercury containing automatic switches / thermometers / and novelties								
	Mercury containing thermostats								
	Mercury containing waste (other)								
	Lamps	7,850							
	Rechargeable batteries	800							
	Other batteries	7,250							
	Aerosol cans	6,650							
Electronic Devices (UW)	Covered Electronic Devices								



DEPARTMENT OF RESOURCES RECYCLING AND RECOVERY

1001 I STREET, SACRAMENTO, CALIFORNIA 95814 • www.CalRecycle.ca.gov • (916) 322-4027
P.O. BOX 4025, SACRAMENTO, CALIFORNIA 95812

Collection (pounds)	Material Type	Permanent Facility	Temporary (periodic) Facility	Mobile Facility	Recycle-only Facility	Door to Door (residential) Program	Curbside Program	Load Check	Other
Electronic Devices (UW)	Other Electronic Devices								
	Electronic Devices (UW) subtotal								
	Universal Waste (UW)* + Electronic Devices (UW) subtotal	22,550							
Other	Home-generated sharps waste								
	Home-generated pharmaceutical waste								
	Treated wood								
	Fire extinguisher and/or expelled fire extiguisher	500							
	Non RCRA Labpack/Loosepack	2,950							
	None								
	Other								
	Reuse Total								
Other subtotal		3,450							
Grand Total		176,342							



DEPARTMENT OF RESOURCES RECYCLING AND RECOVERY

1001 I STREET, SACRAMENTO, CALIFORNIA 95814 • www.CalRecycle.ca.gov • (916) 322-4027
P.O. BOX 4025, SACRAMENTO, CALIFORNIA 95812

Disposition (pounds)	Material Type	Destructive Incineration	Fuel Incineration	Landfill	Neutralization / Treatment	Recycled	Reused	Stabilization	Steward
Flammable and Poison	Flammable solids / liquids								
	Bulked flammable liquids								
	Oil-based paints								22,546
	Paint Related Material (PRM)		43,100						
	Poisons	19,900							
	Reactive and explosive								
	Compressed gas cylinders					600			
	1 lb propane canister								
	Flammable and Poison subtotal	19,900	43,100			600			22,546
PCB-containing	PCB-containing paint								
	Other PCB waste (includes ballasts)								
	PCB-containing subtotal								
Reclaimable	Antifreeze					3,000			
	Auto type batteries (motor vehicles)					2,300			
	Latex paint								51,096
	Motor oil/oil products								
	Used oil filters (recyclables only)								
	Reclaimable subtotal					5,300			51,096
Acid	Inorganic and organic acid				2,400				
Base	Inorganic and organic base				3,600				
Oxidizer	Neutral oxidizers, Organic peroxides, Oxidizing acid/base				1,800				
Asbestos	Asbestos								
Universal Waste (UW)*	Mercury containing automatic switches / thermometers / and novelties								
	Mercury containing thermostats								
	Mercury containing waste (other)								
	Lamps					7,850			
	Rechargeable batteries					800			
	Other batteries					7,250			
	Aerosol cans	6,650							
Electronic Devices (UW)	Covered Electronic Devices								



DEPARTMENT OF RESOURCES RECYCLING AND RECOVERY

1001 I STREET, SACRAMENTO, CALIFORNIA 95814 • www.CalRecycle.ca.gov • (916) 322-4027
P.O. BOX 4025, SACRAMENTO, CALIFORNIA 95812

Disposition (pounds)	Material Type	Destructive Incineration	Fuel Incineration	Landfill	Neutralization / Treatment	Recycled	Reused	Stabilization	Steward
Electronic Devices (UW)	Other Electronic Devices								
	Electronic Devices (UW) subtotal								
	Universal Waste (UW)* + Electronic Devices (UW) subtotal	6,650				15,900			
Other	Home-generated sharps waste								
	Home-generated pharmaceutical waste								
	Treated wood								
	Fire extinguisher and/or expelled fire extinguisher					500			
	Non RCRA Labpack/Loosepack							2,950	
	None								
	Other								
	Reuse Total								
	Other subtotal					500		2,950	
	Grand Total	26,550	43,100		7,800	22,300		2,950	73,642