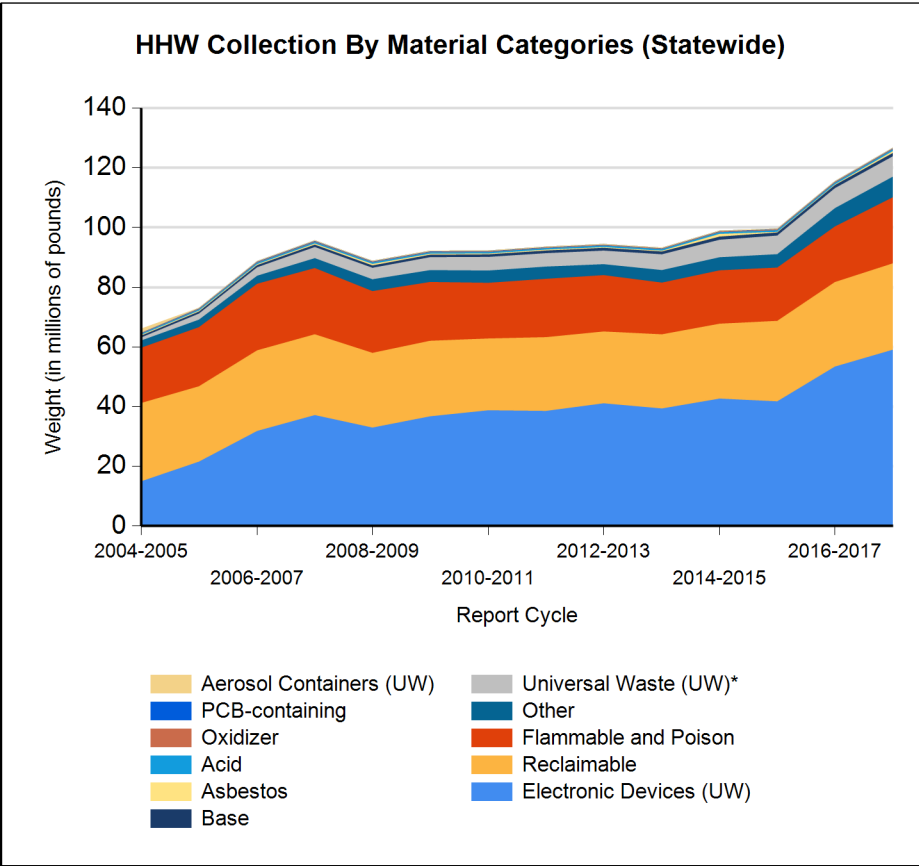
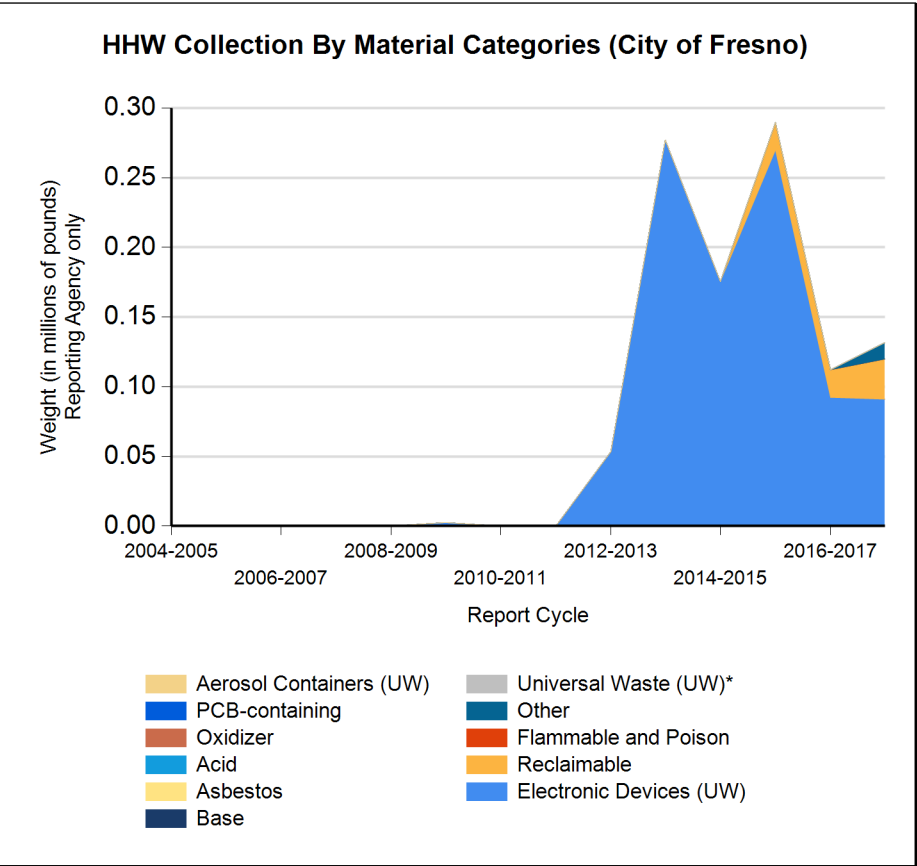


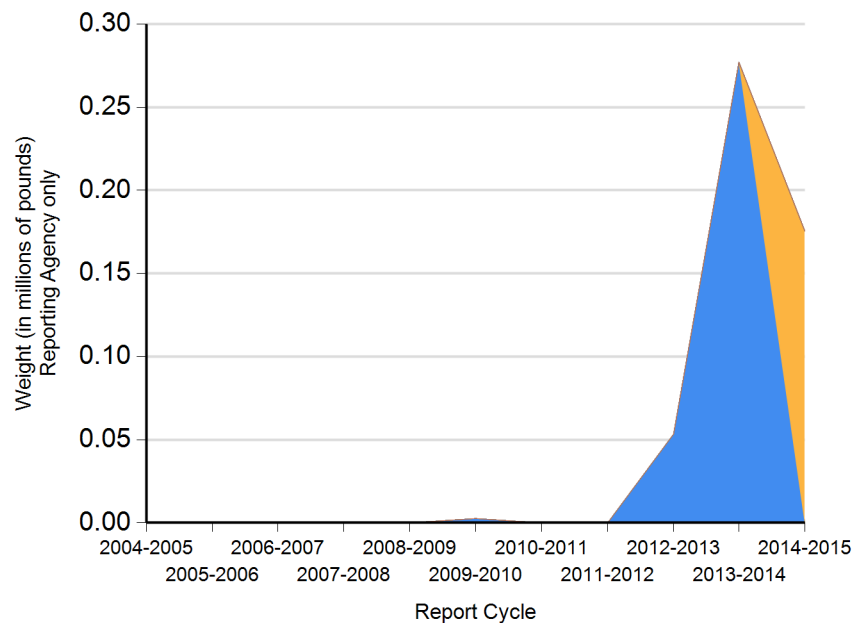


Form CalRecycle 303 Household Hazardous Waste Collection Information For 2017-2018

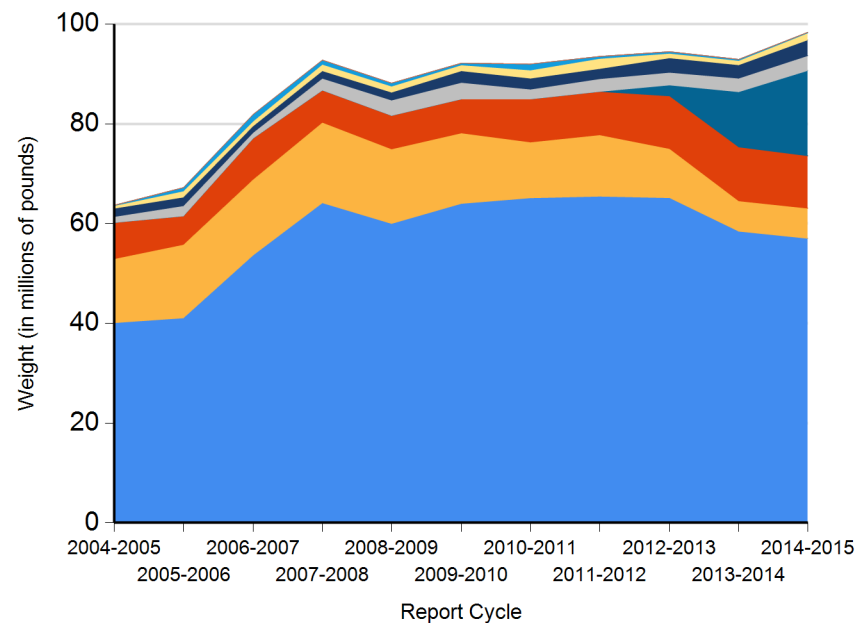




HHW Disposition By Disposition Method (City of Fresno)



HHW Disposition By Disposition Method (Statewide)





**Name of Public Agency Reporting:** City of Fresno

**Contractor's Name:**

**Participating Households:** 179,679      **Method:** Number of Addresses

Participating Households includes non-residential (CESQG,schools,nonprofits,etc.): Yes

**Service Area Households:** 179,679      Different than Finance E-5 report

**Participants Represented by Reporting Jurisdiction/Agency (i.e., individual city(ies), county(ies), other agency(ies)):**

Fresno

**Program Types:**

Program Type	EPAID	Program Type	EPAID	Program Type	EPAID	Program Type	EPAID
Permanent Facility	CAL000344122	Temporary (periodic) Facility	CAH111001212	Door to Door (residential) Program	CAR000116742	Load Check	CAR000102425
E-Waste Roundup	CAR000202937	Alianza Rec. & Recovery	CAR000197087				



# DEPARTMENT OF RESOURCES RECYCLING AND RECOVERY

1001 I STREET, SACRAMENTO, CALIFORNIA 95814 • www.CalRecycle.ca.gov • (916) 322-4027  
P.O. BOX 4025, SACRAMENTO, CALIFORNIA 95812

Collection (pounds)	Material Type	Permanent Facility	Temporary (periodic) Facility	Mobile Facility	Recycle-only Facility	Door to Door (residential) Program	Curbside Program	Load Check	Other
Flammable and Poison	Flammable solids / liquids								
	Bulked flammable liquids								
	Oil-based paints								
	Paint Related Material (PRM)								
	Poisons								
	Reactive and explosive								
	Compressed gas cylinders								
	1 lb propane canister								
	Flammable and Poison subtotal								
PCB-containing	PCB-containing paint								
	Other PCB waste (includes ballasts)								
	PCB-containing subtotal								
Reclaimable	Antifreeze								
	Auto type batteries (motor vehicles)								
	Latex paint								
	Motor oil/oil products						11,940		
	Used oil filters (recyclables only)						16,900		
	Reclaimable subtotal						28,840		
Acid	Inorganic and organic acid								
Base	Inorganic and organic base								
Oxidizer	Neutral oxidizers, Organic peroxides, Oxidizing acid/base								
Asbestos	Asbestos								
Universal Waste (UW)*	Mercury containing automatic switches / thermometers / and novelties								
	Mercury containing thermostats								
	Mercury containing waste (other)								
	Lamps								
	Rechargeable batteries								
	Other batteries								
	Aerosol cans								
Electronic Devices (UW)	Covered Electronic Devices				85,450				



DEPARTMENT OF RESOURCES RECYCLING AND RECOVERY

1001 I STREET, SACRAMENTO, CALIFORNIA 95814 • www.CalRecycle.ca.gov • (916) 322-4027  
P.O. BOX 4025, SACRAMENTO, CALIFORNIA 95812

Collection (pounds)	Material Type	Permanent Facility	Temporary (periodic) Facility	Mobile Facility	Recycle-only Facility	Door to Door (residential) Program	Curbside Program	Load Check	Other
Electronic Devices (UW)	Other Electronic Devices				5,682				
	Electronic Devices (UW) subtotal	91,132							
	Universal Waste (UW)* + Electronic Devices (UW) subtotal	91,132							
Other	Home-generated sharps waste	8,403							
	Home-generated pharmaceutical waste	3,398							
	Treated wood								
	Other								
	Reuse Total								
Other subtotal		11,801							
Grand Total		11,801				91,132	28,840		



# DEPARTMENT OF RESOURCES RECYCLING AND RECOVERY

1001 I STREET, SACRAMENTO, CALIFORNIA 95814 • www.CalRecycle.ca.gov • (916) 322-4027  
P.O. BOX 4025, SACRAMENTO, CALIFORNIA 95812

Disposition (pounds)	Material Type	Destructive Incineration	Fuel Incineration	Landfill	Neutralization / Treatment	Recycled	Reused	Stabilization	Steward
Flammable and Poison	Flammable solids / liquids								
	Bulked flammable liquids								
	Oil-based paints								
	Paint Related Material (PRM)								
	Poisons								
	Reactive and explosive								
	Compressed gas cylinders								
	1 lb propane canister								
	<b>Flammable and Poison subtotal</b>								
PCB-containing	PCB-containing paint								
	Other PCB waste (includes ballasts)								
	<b>PCB-containing subtotal</b>								
Reclaimable	Antifreeze								
	Auto type batteries (motor vehicles)								
	Latex paint								
	Motor oil/oil products					11,940			
	Used oil filters (recyclables only)					16,900			
	<b>Reclaimable subtotal</b>					<b>28,840</b>			
Acid	Inorganic and organic acid								
Base	Inorganic and organic base								
Oxidizer	Neutral oxidizers, Organic peroxides, Oxidizing acid/base								
Asbestos	Asbestos								
Universal Waste (UW)*	Mercury containing automatic switches / thermometers / and novelties								
	Mercury containing thermostats								
	Mercury containing waste (other)								
	Lamps								
	Rechargeable batteries								
	Other batteries								
	Aerosol cans								
Electronic Devices (UW)	Covered Electronic Devices					85,450			



DEPARTMENT OF RESOURCES RECYCLING AND RECOVERY

1001 I STREET, SACRAMENTO, CALIFORNIA 95814 • www.CalRecycle.ca.gov • (916) 322-4027  
P.O. BOX 4025, SACRAMENTO, CALIFORNIA 95812

Disposition (pounds)	Material Type	Destructive Incineration	Fuel Incineration	Landfill	Neutralization / Treatment	Recycled	Reused	Stabilization	Steward
Electronic Devices (UW)	Other Electronic Devices					5,682			
	Electronic Devices (UW) subtotal					91,132			
	Universal Waste (UW)* + Electronic Devices (UW) subtotal					91,132			
Other	Home-generated sharps waste	8,403							
	Home-generated pharmaceutical waste	3,398							
	Treated wood								
	Other								
	Reuse Total								
	Other subtotal	11,801							
	Grand Total	11,801				119,972			