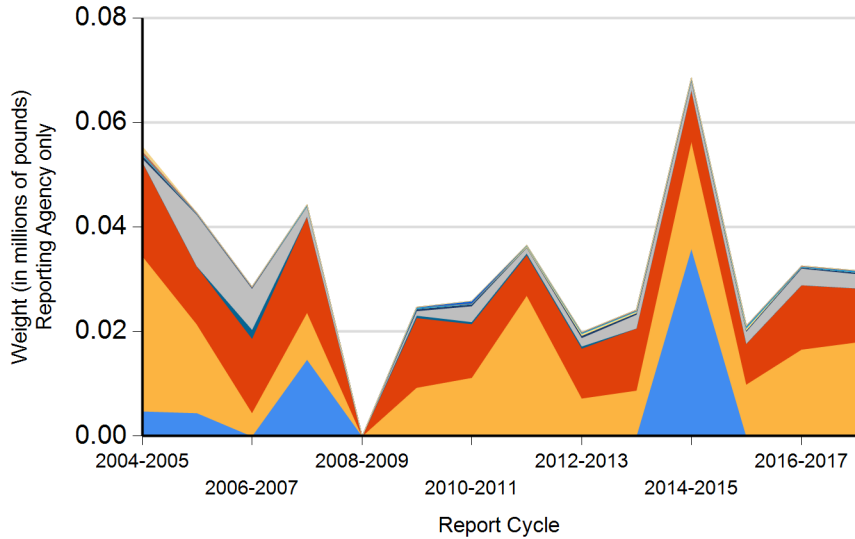




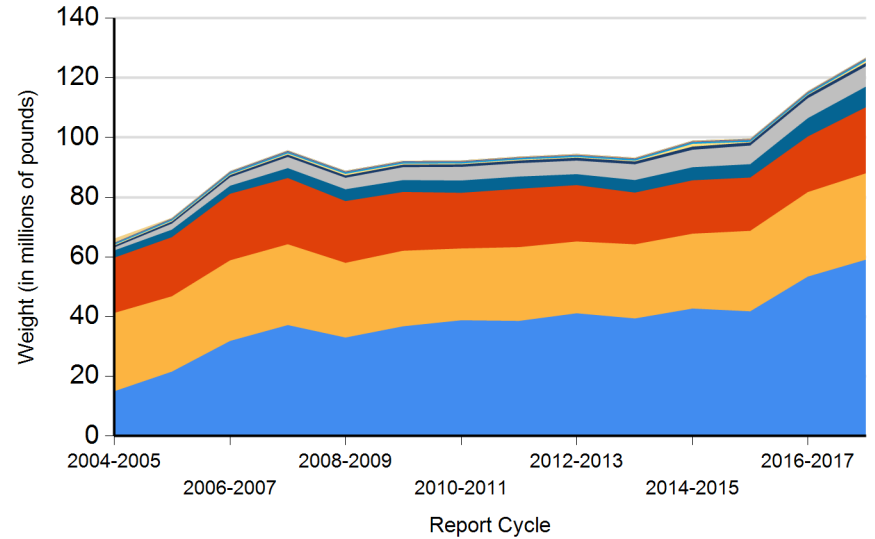
Form CalRecycle 303 Household Hazardous Waste Collection Information For 2017-2018

HHW Collection By Material Categories (City of Carpinteria)



- Aerosol Containers (UW)
- PCB-containing
- Oxidizer
- Acid
- Asbestos
- Base
- Universal Waste (UW)\*
- Other
- Flammable and Poison
- Reclaimable
- Electronic Devices (UW)

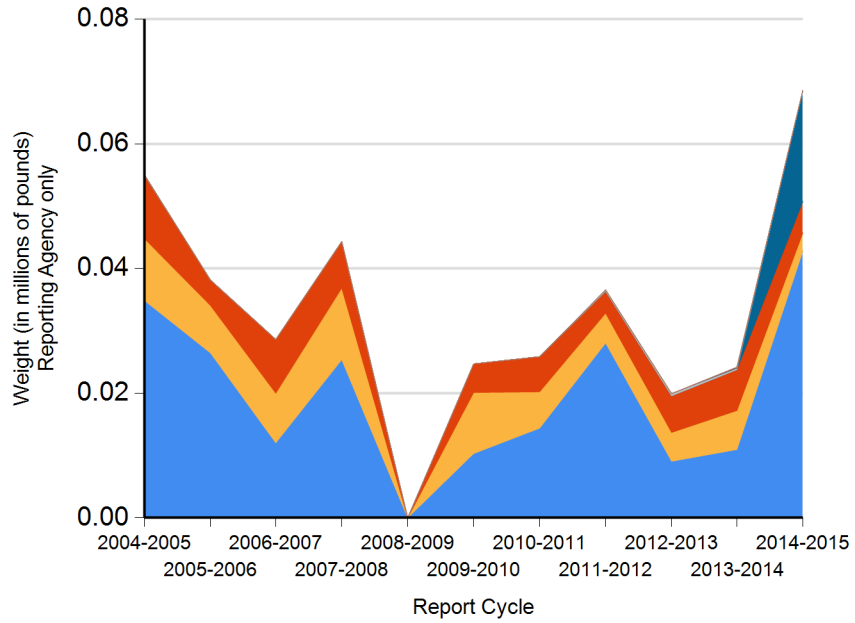
HHW Collection By Material Categories (Statewide)



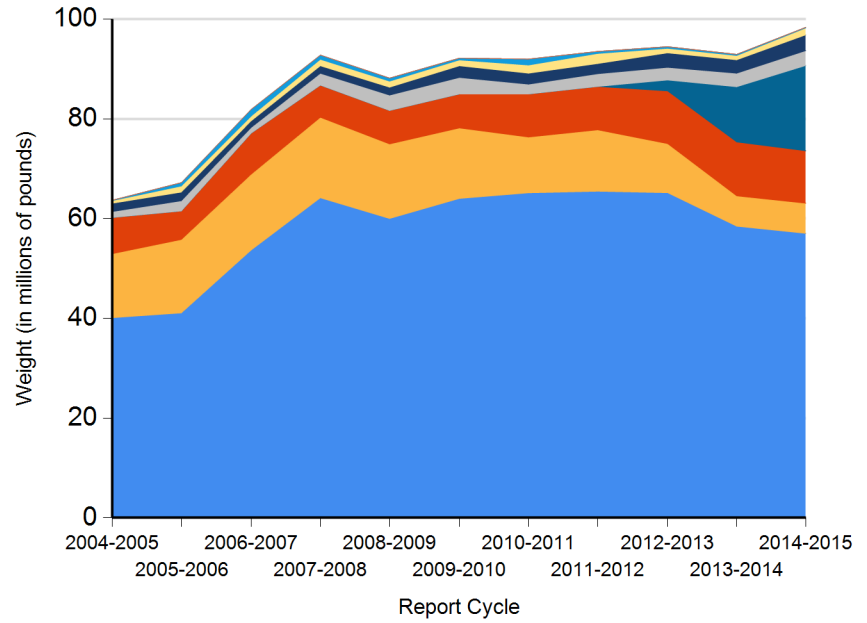
- Aerosol Containers (UW)
- PCB-containing
- Oxidizer
- Acid
- Asbestos
- Base
- Universal Waste (UW)\*
- Other
- Flammable and Poison
- Reclaimable
- Electronic Devices (UW)



HHW Disposition By Disposition Method (City of Carpinteria)



HHW Disposition By Disposition Method (Statewide)





# DEPARTMENT OF RESOURCES RECYCLING AND RECOVERY

1001 I STREET, SACRAMENTO, CALIFORNIA 95814 • www.CalRecycle.ca.gov • (916) 322-4027  
P.O. BOX 4025, SACRAMENTO, CALIFORNIA 95812

**Name of Public Agency Reporting:** City of Carpinteria

**Contractor's Name:** City of Carpinteria

**Participating Households:** 1,254      **Method:** Number of Addresses

Participating Households includes non-residential (CESQG,schools,nonprofits,etc.): Yes

**Service Area Households:** 5,602

**Participants Represented by Reporting Jurisdiction/Agency (i.e., individual city(ies), county(ies), other agency(ies)):**

Carpinteria

**Program Types:**

Program Type	EPAID	Program Type	EPAID
Temporary (periodic) Facility	CAH111000364	Door to Door (commercial)	CAL000343066



DEPARTMENT OF RESOURCES RECYCLING AND RECOVERY

1001 I STREET, SACRAMENTO, CALIFORNIA 95814 • www.CalRecycle.ca.gov • (916) 322-4027  
 P.O. BOX 4025, SACRAMENTO, CALIFORNIA 95812

Collection (pounds)	Material Type	Permanent Facility	Temporary (periodic) Facility	Mobile Facility	Recycle-only Facility	Door to Door (residential) Program	Curbside Program	Load Check	Other
<b>Flammable and Poison</b>	Flammable solids / liquids		3,695						
	Bulked flammable liquids		421						
	Oil-based paints		3,126		1,646				
	Paint Related Material (PRM)								
	Poisons		1,418						
	Reactive and explosive		11						
	Compressed gas cylinders		41						
	1 lb propane canister								
<b>Flammable and Poison subtotal</b>			<b>8,712</b>		<b>1,646</b>				
<b>PCB-containing</b>	PCB-containing paint								
	Other PCB waste (includes ballasts)		33						
<b>PCB-containing subtotal</b>			<b>33</b>						
<b>Reclaimable</b>	Antifreeze		151						
	Auto type batteries (motor vehicles)		200		773				
	Latex paint		8,735		7,258				
	Motor oil/oil products		848						
	Used oil filters (recyclables only)		8						
<b>Reclaimable subtotal</b>			<b>9,942</b>		<b>8,031</b>				
<b>Acid</b>	Inorganic and organic acid		259						
<b>Base</b>	Inorganic and organic base		287						
<b>Oxidizer</b>	Neutral oxidizers, Organic peroxides, Oxidizing acid/base		63						
<b>Asbestos</b>	Asbestos								
<b>Universal Waste (UW)*</b>	Mercury containing automatic switches / thermometers / and novelties								
	Mercury containing thermostats								
	Mercury containing waste (other)								
	Lamps		345		222				
	Rechargeable batteries		87		100				
	Other batteries		491		910				
	Aerosol cans		587						
<b>Electronic Devices (UW)</b>	Covered Electronic Devices								



DEPARTMENT OF RESOURCES RECYCLING AND RECOVERY

1001 I STREET, SACRAMENTO, CALIFORNIA 95814 • www.CalRecycle.ca.gov • (916) 322-4027  
 P.O. BOX 4025, SACRAMENTO, CALIFORNIA 95812

Collection (pounds)	Material Type	Permanent Facility	Temporary (periodic) Facility	Mobile Facility	Recycle-only Facility	Door to Door (residential) Program	Curbside Program	Load Check	Other
Electronic Devices (UW)	Other Electronic Devices								
	<b>Electronic Devices (UW) subtotal</b>								
	<b>Universal Waste (UW)* + Electronic Devices (UW) subtotal</b>			1,510		1,232			
Other	Home-generated sharps waste		6						
	Home-generated pharmaceutical waste								
	Treated wood								
	Other								
	Reuse Total								
	<b>Other subtotal</b>		6						
	<b>Grand Total</b>		20,812		10,909				



# DEPARTMENT OF RESOURCES RECYCLING AND RECOVERY

1001 I STREET, SACRAMENTO, CALIFORNIA 95814 • www.CalRecycle.ca.gov • (916) 322-4027  
 P.O. BOX 4025, SACRAMENTO, CALIFORNIA 95812

Disposition (pounds)	Material Type	Destructive Incineration	Fuel Incineration	Landfill	Neutralization / Treatment	Recycled	Reused	Stabilization	Steward
<b>Flammable and Poison</b>	Flammable solids / liquids	3,545				150			
	Bulked flammable liquids		421						
	Oil-based paints								4,772
	Paint Related Material (PRM)								
	Poisons	1,418							
	Reactive and explosive	11							
	Compressed gas cylinders					41			
	1 lb propane canister								
	<b>Flammable and Poison subtotal</b>	<b>4,974</b>	<b>421</b>			<b>191</b>			<b>4,772</b>
<b>PCB-containing</b>	PCB-containing paint								
	Other PCB waste (includes ballasts)	33							
	<b>PCB-containing subtotal</b>	<b>33</b>							
<b>Reclaimable</b>	Antifreeze					151			
	Auto type batteries (motor vehicles)					973			
	Latex paint								15,993
	Motor oil/oil products					848			
	Used oil filters (recyclables only)					8			
	<b>Reclaimable subtotal</b>					<b>1,980</b>			<b>15,993</b>
<b>Acid</b>	Inorganic and organic acid	259							
<b>Base</b>	Inorganic and organic base	287							
<b>Oxidizer</b>	Neutral oxidizers, Organic peroxides, Oxidizing acid/base	63							
<b>Asbestos</b>	Asbestos								
<b>Universal Waste (UW)*</b>	Mercury containing automatic switches / thermometers / and novelties								
	Mercury containing thermostats								
	Mercury containing waste (other)								
	Lamps					567			
	Rechargeable batteries					187			
	Other batteries					1,401			
	Aerosol cans	587							
	<b>Electronic Devices (UW)</b>	Covered Electronic Devices							



DEPARTMENT OF RESOURCES RECYCLING AND RECOVERY

1001 I STREET, SACRAMENTO, CALIFORNIA 95814 • www.CalRecycle.ca.gov • (916) 322-4027  
 P.O. BOX 4025, SACRAMENTO, CALIFORNIA 95812

Disposition (pounds)	Material Type	Destructive Incineration	Fuel Incineration	Landfill	Neutralization / Treatment	Recycled	Reused	Stabilization	Steward
Electronic Devices (UW)	Other Electronic Devices								
	<b>Electronic Devices (UW) subtotal</b>								
	<b>Universal Waste (UW)* + Electronic Devices (UW) subtotal</b>		<b>587</b>				<b>2,155</b>		
Other	Home-generated sharps waste	6							
	Home-generated pharmaceutical waste								
	Treated wood								
	Other								
	Reuse Total								
<b>Other subtotal</b>		<b>6</b>							
<b>Grand Total</b>		<b>6,209</b>	<b>421</b>			<b>4,326</b>			<b>20,765</b>