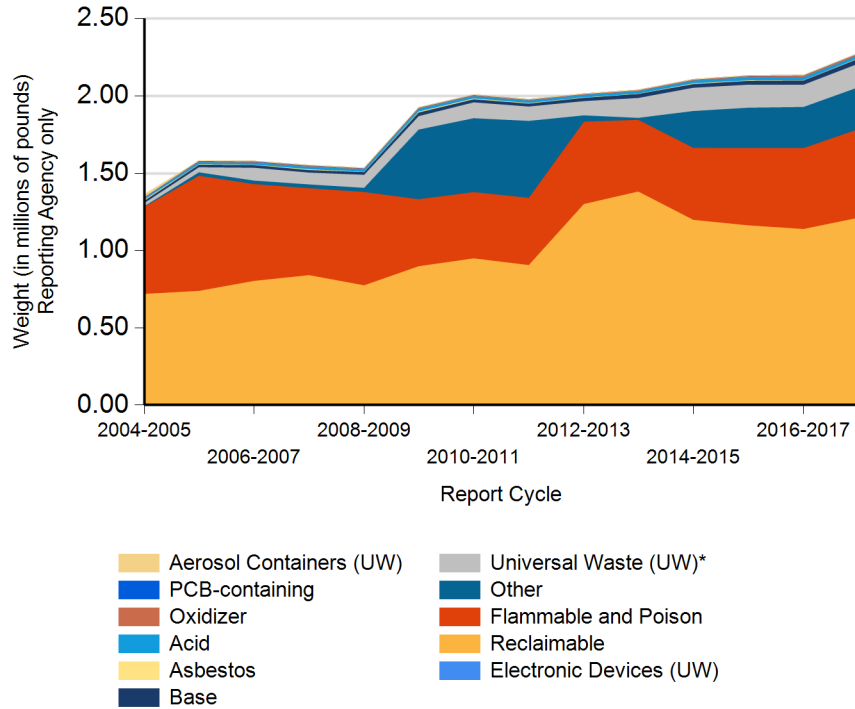


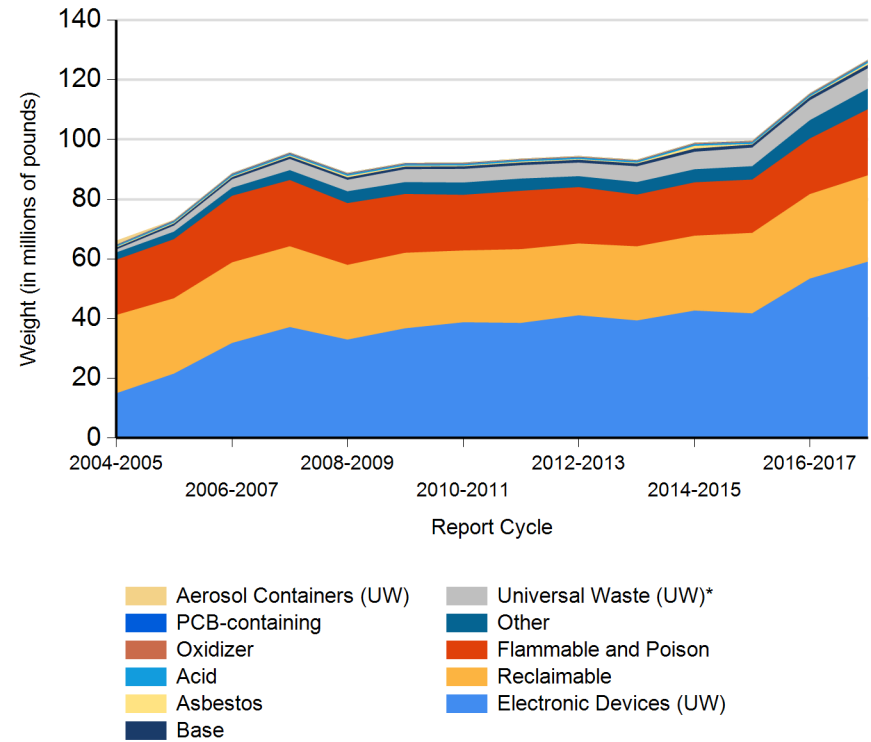


Form CalRecycle 303 Household Hazardous Waste Collection Information For 2017-2018

HHW Collection By Material Categories (Central Contra Costa Sanitary District)

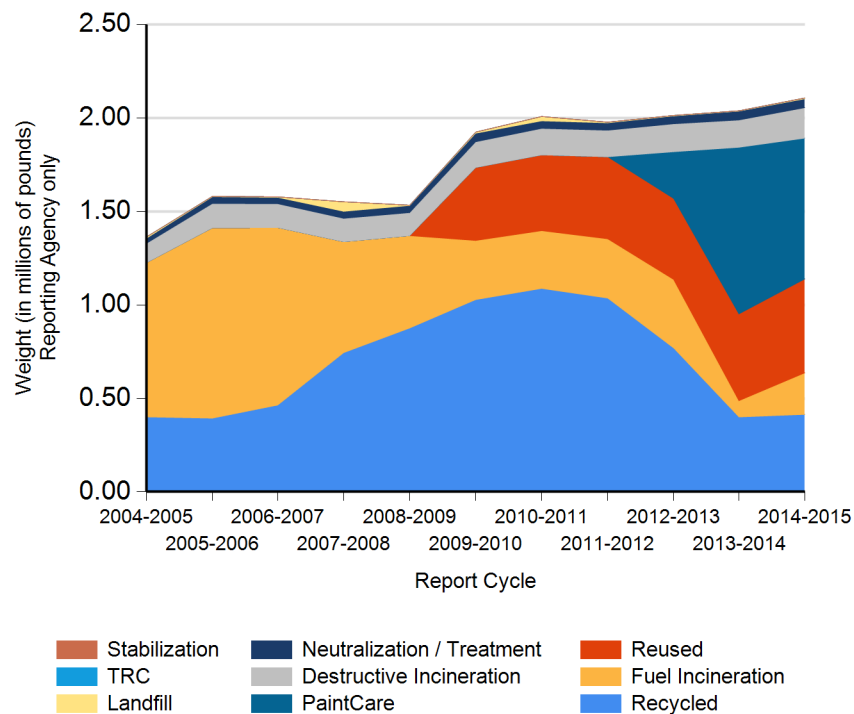


HHW Collection By Material Categories (Statewide)

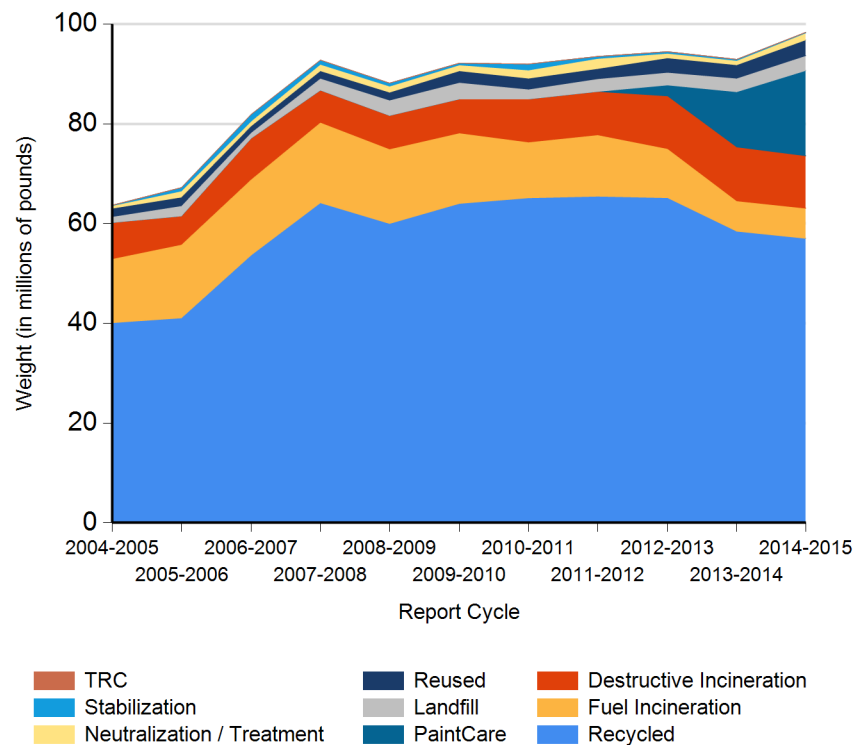




HHW Disposition By Disposition Method (Central Contra Costa Sanitary District)



HHW Disposition By Disposition Method (Statewide)





DEPARTMENT OF RESOURCES RECYCLING AND RECOVERY

1001 I STREET, SACRAMENTO, CALIFORNIA 95814 • www.CalRecycle.ca.gov • (916) 322-4027  
P.O. BOX 4025, SACRAMENTO, CALIFORNIA 95812

**Name of Public Agency Reporting:** Central Contra Costa Sanitary District

**Contractor's Name:** Stericycle

**Participating Households:** 35,640      **Method:** Number of Vehicles

Participating Households includes non-residential (CESQG,schools,nonprofits,etc.): Yes

**Service Area Households:** 193,597

Participants Represented by Reporting Jurisdiction/Agency (i.e., individual city(ies), county(ies), other agency(ies)):

Clayton	Concord	Contra Costa-Unincorporated	Danville	Lafayette
Martinez	Moraga	Orinda	Pleasant Hill	San Ramon
Walnut Creek				

Program Types:

Program Type	EPAID	Program Type	EPAID	Program Type	EPAID	Program Type	EPAID
Permanent Facility	CAH111000541	Retail - Ace Hardware Walnut Creek - Ygnacio		Retail - Ace Hardware Walnut Creek - Mt. Diablo		Retail - Ace Hardware Alamo	
Retail - Ace Hardware Clayton		Retail - Ace Hardware Pleasant Hill		Retail - Ace Hardware Martinez		Retail - Ace Hardware Blackhawk	
Pharmaceutical Collection - Clayton PD		Pharmaceutical Collection - Concord PD		Pharmaceutical Collection - Danville PD		Pharmaceutical Collection - Martinez PD	
Pharmaceutical Collection - Moraga PD		Pharmaceutical Collection - Orinda PD		Pharmaceutical Collection - Pleasant Hill PD		Pharmaceutical Collection - San Ramon PD	
Pharmaceutical Collection - Walnut Creek PD		Pharmaceutical Collection - CCC Sheriff FOB		Pharmaceutical Collection - CCC Regional Medical Center		Pharmaceutical Collection - Alamo Substation	
Pharmaceutical Collection - Lafayette PD							



# DEPARTMENT OF RESOURCES RECYCLING AND RECOVERY

1001 I STREET, SACRAMENTO, CALIFORNIA 95814 • www.CalRecycle.ca.gov • (916) 322-4027  
P.O. BOX 4025, SACRAMENTO, CALIFORNIA 95812

Collection (pounds)	Material Type	Permanent Facility	Temporary (periodic) Facility	Mobile Facility	Recycle-only Facility	Door to Door (residential) Program	Curbside Program	Load Check	Other
Flammable and Poison	Flammable solids / liquids	66,526							
	Bulked flammable liquids	60,750							
	Oil-based paints	131,893							
	Paint Related Material (PRM)	153,900							
	Poisons	125,174							
	Reactive and explosive	105							
	Compressed gas cylinders	29,723							
	1 lb propane canister	4,100							
	<b>Flammable and Poison subtotal</b>	<b>572,171</b>							
PCB-containing	PCB-containing paint								
	Other PCB waste (includes ballasts)	1,400							
	<b>PCB-containing subtotal</b>	<b>1,400</b>							
Reclaimable	Antifreeze	38,936							
	Auto type batteries (motor vehicles)	50,254							
	Latex paint	955,879							
	Motor oil/oil products	161,920							
	Used oil filters (recyclables only)	7,200							
	<b>Reclaimable subtotal</b>	<b>1,214,189</b>							
Acid	Inorganic and organic acid	19,012							
Base	Inorganic and organic base	31,500							
Oxidizer	Neutral oxidizers, Organic peroxides, Oxidizing acid/base	9,557							
Asbestos	Asbestos	3,600							
Universal Waste (UW)*	Mercury containing automatic switches / thermometers / and novelties	91							
	Mercury containing thermostats	31							
	Mercury containing waste (other)	23							
	Lamps	43,271							8,888
	Rechargeable batteries	5,462							
	Other batteries	58,024							
	Aerosol cans	37,200							
Electronic Devices (UW)	Covered Electronic Devices								



# DEPARTMENT OF RESOURCES RECYCLING AND RECOVERY

1001 I STREET, SACRAMENTO, CALIFORNIA 95814 • www.CalRecycle.ca.gov • (916) 322-4027  
P.O. BOX 4025, SACRAMENTO, CALIFORNIA 95812

Collection (pounds)	Material Type	Permanent Facility	Temporary (periodic) Facility	Mobile Facility	Recycle-only Facility	Door to Door (residential) Program	Curbside Program	Load Check	Other
Electronic Devices (UW)	Other Electronic Devices								
	Electronic Devices (UW) subtotal								
	Universal Waste (UW)* + Electronic Devices (UW) subtotal	144,102							8,888
Other	Home-generated sharps waste	25							
	Home-generated pharmaceutical waste								17,453
	Treated wood								
	cooking oil	34,681							
	Other								
	Printer Cartridges	1,114							
	Scrap lead	406							
	smoke detectors	83							
	Reuse Total	217,369							
Other subtotal		253,678							17,453
Grand Total		2,249,209							26,341



# DEPARTMENT OF RESOURCES RECYCLING AND RECOVERY

1001 I STREET, SACRAMENTO, CALIFORNIA 95814 • www.CalRecycle.ca.gov • (916) 322-4027  
P.O. BOX 4025, SACRAMENTO, CALIFORNIA 95812

Disposition (pounds)	Material Type	Destructive Incineration	Fuel Incineration	Landfill	Neutralization / Treatment	Recycled	Reused	Stabilization	Steward
Flammable and Poison	Flammable solids / liquids	1,750	64,776						
	Bulked flammable liquids		60,750						
	Oil-based paints						22,393		109,500
	Paint Related Material (PRM)		153,900						
	Poisons	125,174							
	Reactive and explosive	105							
	Compressed gas cylinders	3,450				26,273			
	1 lb propane canister					4,100			
Flammable and Poison subtotal		130,479	279,426			30,373	22,393		109,500
PCB-containing	PCB-containing paint								
	Other PCB waste (includes ballasts)	1,400							
PCB-containing subtotal		1,400							
Reclaimable	Antifreeze					38,936			
	Auto type batteries (motor vehicles)					50,254			
	Latex paint						151,879		804,000
	Motor oil/oil products					161,920			
	Used oil filters (recyclables only)					7,200			
Reclaimable subtotal						258,310	151,879		804,000
Acid	Inorganic and organic acid				19,012				
Base	Inorganic and organic base				31,500				
Oxidizer	Neutral oxidizers, Organic peroxides, Oxidizing acid/base	96				9,461			
Asbestos	Asbestos			3,600					
Universal Waste (UW)*	Mercury containing automatic switches / thermometers / and novelties					91			
	Mercury containing thermostats								31
	Mercury containing waste (other)					23			
	Lamps					52,159			
	Rechargeable batteries					5,462			
	Other batteries					58,024			
	Aerosol cans	11,160	26,040						
	Covered Electronic Devices								
Electronic Devices (UW)									



# DEPARTMENT OF RESOURCES RECYCLING AND RECOVERY

1001 I STREET, SACRAMENTO, CALIFORNIA 95814 • www.CalRecycle.ca.gov • (916) 322-4027  
P.O. BOX 4025, SACRAMENTO, CALIFORNIA 95812

Disposition (pounds)	Material Type	Destructive Incineration	Fuel Incineration	Landfill	Neutralization / Treatment	Recycled	Reused	Stabilization	Steward
Electronic Devices (UW)	Other Electronic Devices								
	Electronic Devices (UW) subtotal								
	Universal Waste (UW)* + Electronic Devices (UW) subtotal	11,160	26,040			115,759			31
Other	Home-generated sharps waste			25					
	Home-generated pharmaceutical waste	17,453							
	Treated wood								
	cooking oil					34,681			
	Other								
	Printer Cartridges					1,114			
	Scrap lead					406			
	smoke detectors					83			
	Reuse Total						217,369		
	Other subtotal	17,453		25		36,284	217,369		
Grand Total		160,588	305,466	3,625	50,512	450,187	391,641		913,531