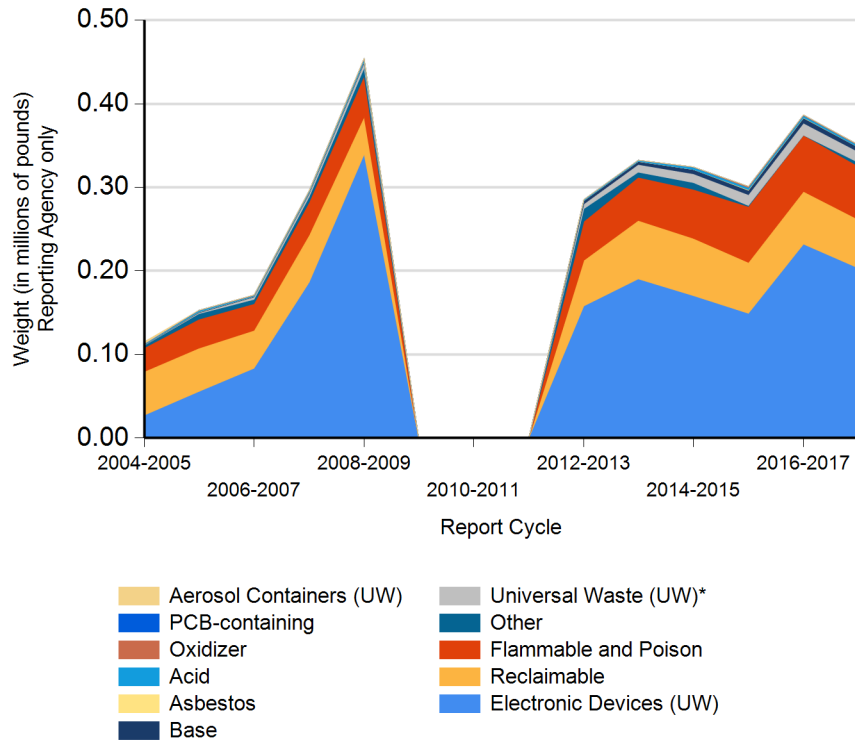


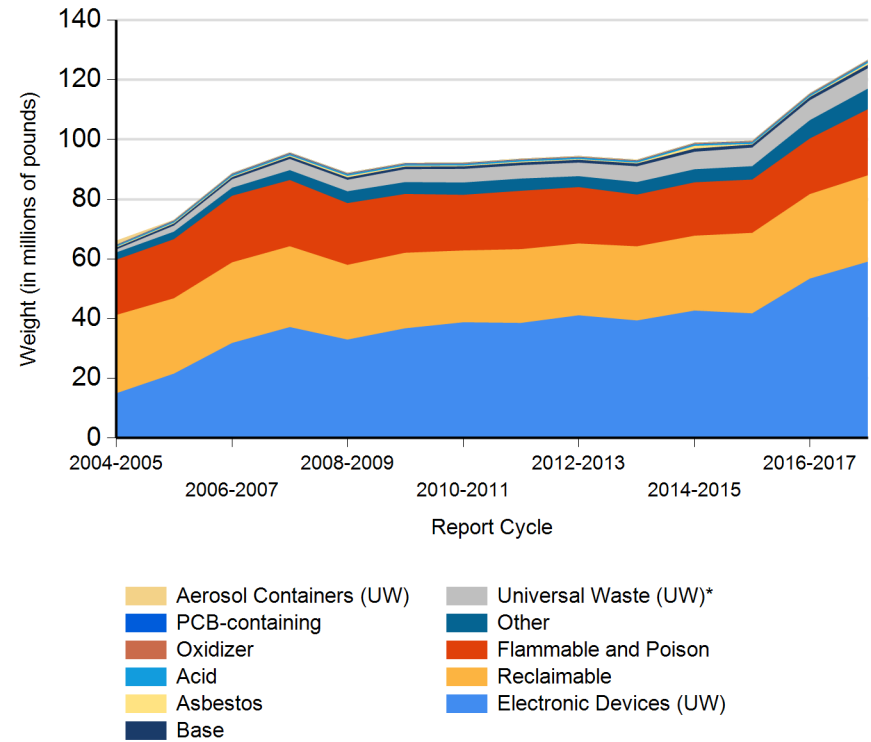


Form CalRecycle 303 Household Hazardous Waste Collection Information For 2017-2018

HHW Collection By Material Categories (City of Escondido)

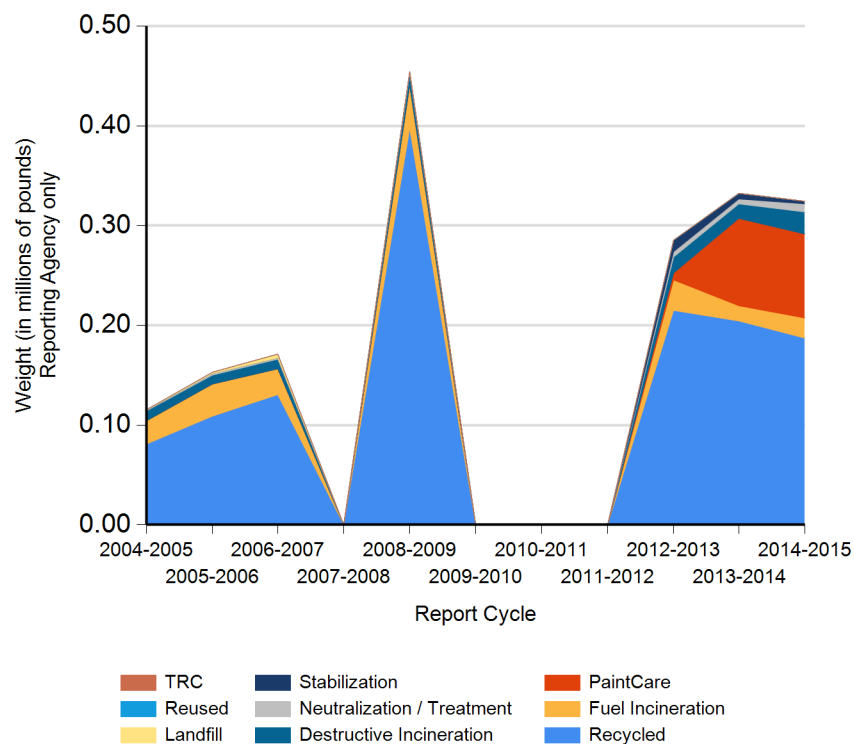


HHW Collection By Material Categories (Statewide)

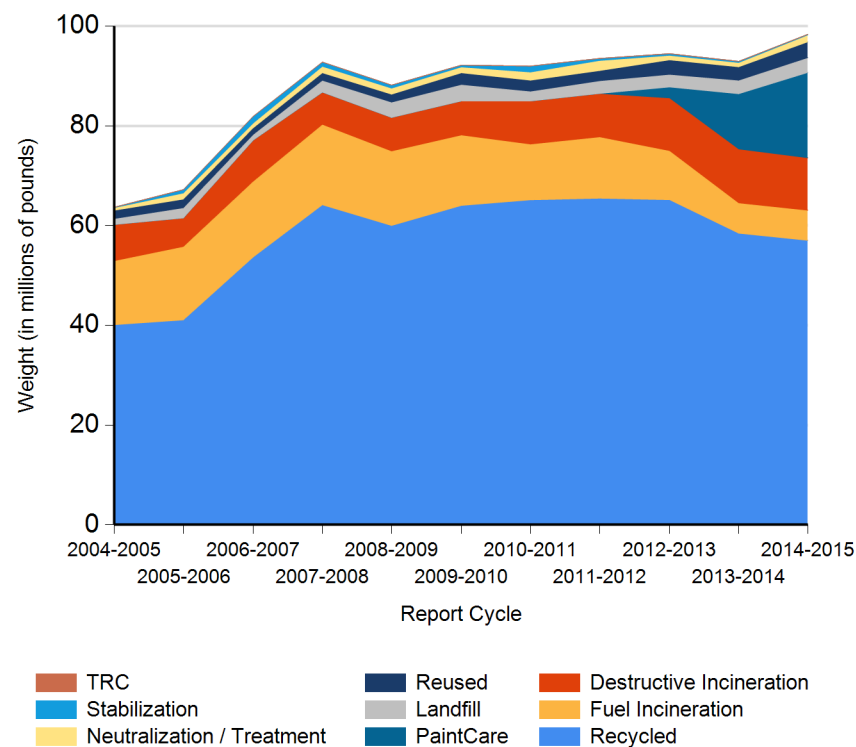




HHW Disposition By Disposition Method (City of Escondido)



HHW Disposition By Disposition Method (Statewide)





**Name of Public Agency Reporting:** City of Escondido

**Contractor's Name:** Stericycle Environmental Solutions

**Participating Households:** 1,986 **Method:** Number of Vehicles

Participating Households includes non-residential (CESQG,schools,nonprofits,etc.): No

**Service Area Households:** 149,268

**Participants Represented by Reporting Jurisdiction/Agency (i.e., individual city(ies), county(ies), other agency(ies)):**

Escondido

**Program Types:**

Program Type	EPAID
Permanent Facility	CAH111001070



# DEPARTMENT OF RESOURCES RECYCLING AND RECOVERY

1001 I STREET, SACRAMENTO, CALIFORNIA 95814 • www.CalRecycle.ca.gov • (916) 322-4027  
P.O. BOX 4025, SACRAMENTO, CALIFORNIA 95812

Collection (pounds)	Material Type	Permanent Facility	Temporary (periodic) Facility	Mobile Facility	Recycle-only Facility	Door to Door (residential) Program	Curbside Program	Load Check	Other
Flammable and Poison	Flammable solids / liquids	200							
	Bulked flammable liquids								
	Oil-based paints	15,188							
	Paint Related Material (PRM)	30,300							
	Poisons	17,050							
	Reactive and explosive								
	Compressed gas cylinders	1,100							
	1 lb propane canister								
	<b>Flammable and Poison subtotal</b>	<b>63,838</b>							
PCB-containing	PCB-containing paint								
	Other PCB waste (includes ballasts)								
	<b>PCB-containing subtotal</b>								
Reclaimable	Antifreeze	500							
	Auto type batteries (motor vehicles)								
	Latex paint	53,959							
	Motor oil/oil products	3,360							
	Used oil filters (recyclables only)	250							
	<b>Reclaimable subtotal</b>	<b>58,069</b>							
Acid	Inorganic and organic acid	2,100							
Base	Inorganic and organic base	5,500							
Oxidizer	Neutral oxidizers, Organic peroxides, Oxidizing acid/base	900							
Asbestos	Asbestos								
Universal Waste (UW)*	Mercury containing automatic switches / thermometers / and novelties	10							
	Mercury containing thermostats								
	Mercury containing waste (other)								
	Lamps	2,940							
	Rechargeable batteries	800							
	Other batteries	4,450							
	Aerosol cans	4,600							
Electronic Devices (UW)	Covered Electronic Devices	115,634							



# DEPARTMENT OF RESOURCES RECYCLING AND RECOVERY

1001 I STREET, SACRAMENTO, CALIFORNIA 95814 • [www.CalRecycle.ca.gov](http://www.CalRecycle.ca.gov) • (916) 322-4027  
P.O. BOX 4025, SACRAMENTO, CALIFORNIA 95812

Collection (pounds)	Material Type	Permanent Facility	Temporary (periodic) Facility	Mobile Facility	Recycle-only Facility	Door to Door (residential) Program	Curbside Program	Load Check	Other
Electronic Devices (UW)	Other Electronic Devices	88,066							
	<b>Electronic Devices (UW) subtotal</b>	<b>203,700</b>							
	<b>Universal Waste (UW)* + Electronic Devices (UW) subtotal</b>	<b>216,500</b>							
Other	Home-generated sharps waste	382							
	Home-generated pharmaceutical waste								
	Treated wood								
	non-rcra lab/loosepack and fire extinguishers	4,000							
	Other								
	Reuse Total								
	<b>Other subtotal</b>	<b>4,382</b>							
	<b>Grand Total</b>	<b>351,289</b>							



# DEPARTMENT OF RESOURCES RECYCLING AND RECOVERY

1001 I STREET, SACRAMENTO, CALIFORNIA 95814 • www.CalRecycle.ca.gov • (916) 322-4027  
P.O. BOX 4025, SACRAMENTO, CALIFORNIA 95812

Disposition (pounds)	Material Type	Destructive Incineration	Fuel Incineration	Landfill	Neutralization / Treatment	Recycled	Reused	Stabilization	Steward
Flammable and Poison	Flammable solids / liquids	200							
	Bulked flammable liquids								
	Oil-based paints								15,188
	Paint Related Material (PRM)		30,300						
	Poisons	17,050							
	Reactive and explosive								
	Compressed gas cylinders					1,100			
	1 lb propane canister								
	<b>Flammable and Poison subtotal</b>	<b>17,250</b>	<b>30,300</b>			<b>1,100</b>			<b>15,188</b>
PCB-containing	PCB-containing paint								
	Other PCB waste (includes ballasts)								
	<b>PCB-containing subtotal</b>								
Reclaimable	Antifreeze					500			
	Auto type batteries (motor vehicles)								
	Latex paint								53,959
	Motor oil/oil products					3,360			
	Used oil filters (recyclables only)					250			
	<b>Reclaimable subtotal</b>					<b>4,110</b>			<b>53,959</b>
Acid	Inorganic and organic acid				2,100				
Base	Inorganic and organic base				5,500				
Oxidizer	Neutral oxidizers, Organic peroxides, Oxidizing acid/base				900				
Asbestos	Asbestos								
Universal Waste (UW)*	Mercury containing automatic switches / thermometers / and novelties					10			
	Mercury containing thermostats								
	Mercury containing waste (other)								
	Lamps					2,940			
	Rechargeable batteries					800			
	Other batteries					4,450			
	Aerosol cans	4,600							
Electronic Devices (UW)	Covered Electronic Devices					115,634			



# DEPARTMENT OF RESOURCES RECYCLING AND RECOVERY

1001 I STREET, SACRAMENTO, CALIFORNIA 95814 • www.CalRecycle.ca.gov • (916) 322-4027  
P.O. BOX 4025, SACRAMENTO, CALIFORNIA 95812

Disposition (pounds)	Material Type	Destructive Incineration	Fuel Incineration	Landfill	Neutralization / Treatment	Recycled	Reused	Stabilization	Steward
Electronic Devices (UW)	Other Electronic Devices					88,066			
	Electronic Devices (UW) subtotal					203,700			
	Universal Waste (UW)* + Electronic Devices (UW) subtotal	4,600				211,900			
Other	Home-generated sharps waste	382							
	Home-generated pharmaceutical waste								
	Treated wood								
	non-rcra lab/loosepack and fire extinguishers					650		3,350	
	Other								
	Reuse Total								
	Other subtotal	382				650		3,350	
	Grand Total	22,232	30,300		8,500	217,760		3,350	69,147