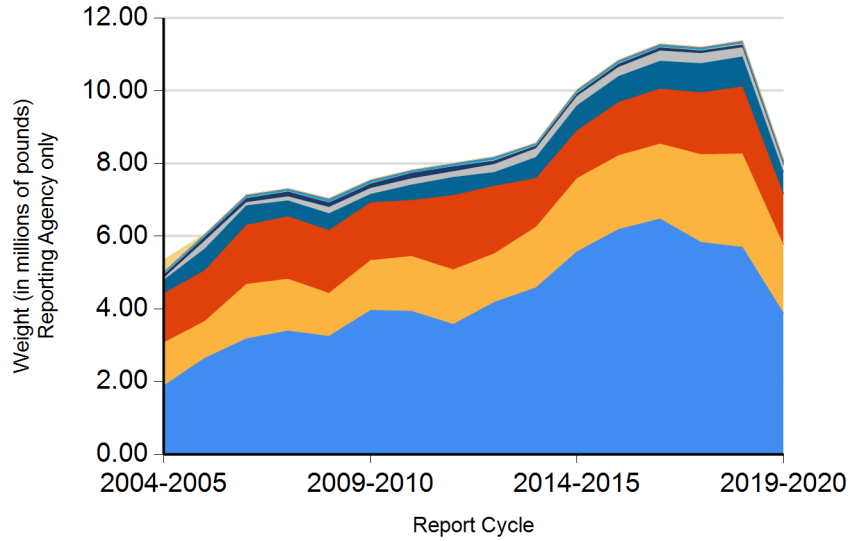




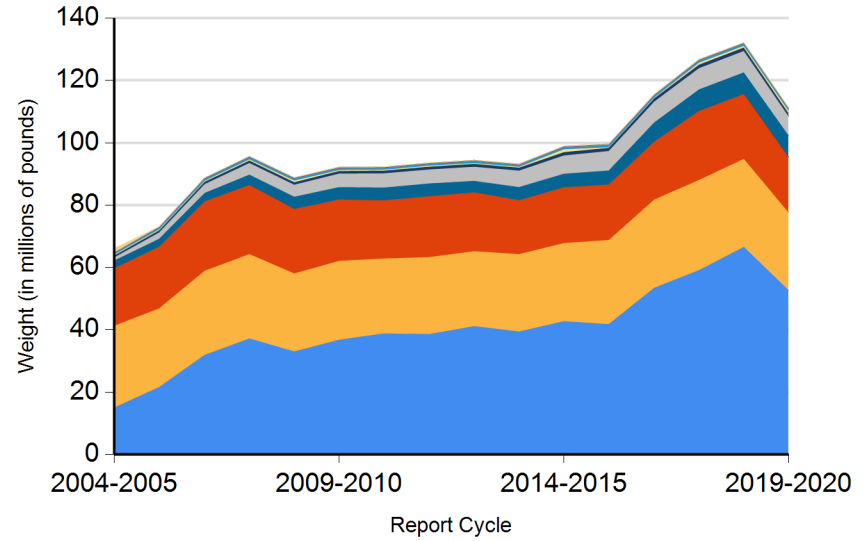
Form CalRecycle 303 Household Hazardous Waste Collection Information For 2019-2020

HHW Collection By Material Categories (City Of Los Angeles)



- Aerosol Containers (UW)
- PCB-containing
- Oxidizer
- Acid
- Asbestos
- Base
- Universal Waste (UW)*
- Other
- Flammable and Poison
- Reclaimable
- Electronic Devices (UW)

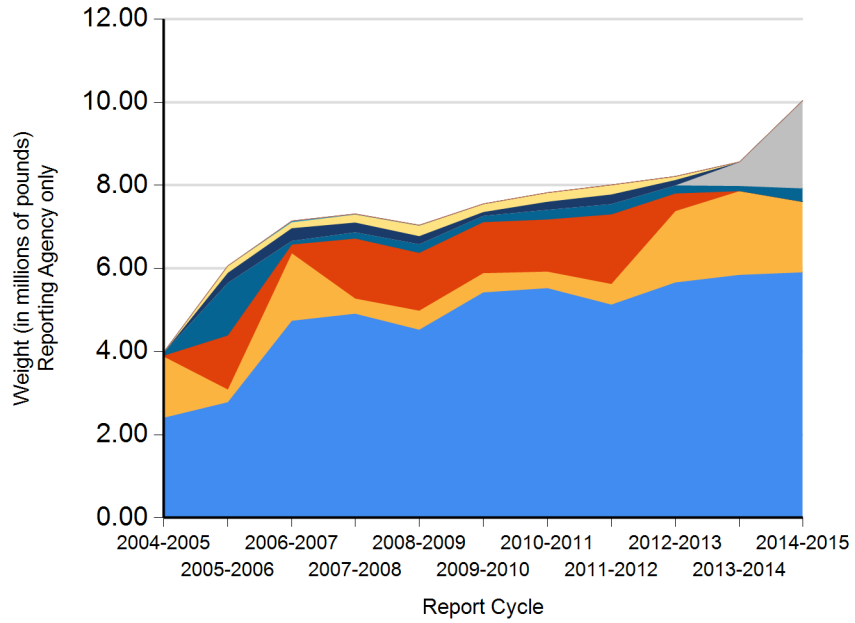
HHW Collection By Material Categories (Statewide)



- Aerosol Containers (UW)
- PCB-containing
- Oxidizer
- Acid
- Asbestos
- Base
- Universal Waste (UW)*
- Other
- Flammable and Poison
- Reclaimable
- Electronic Devices (UW)

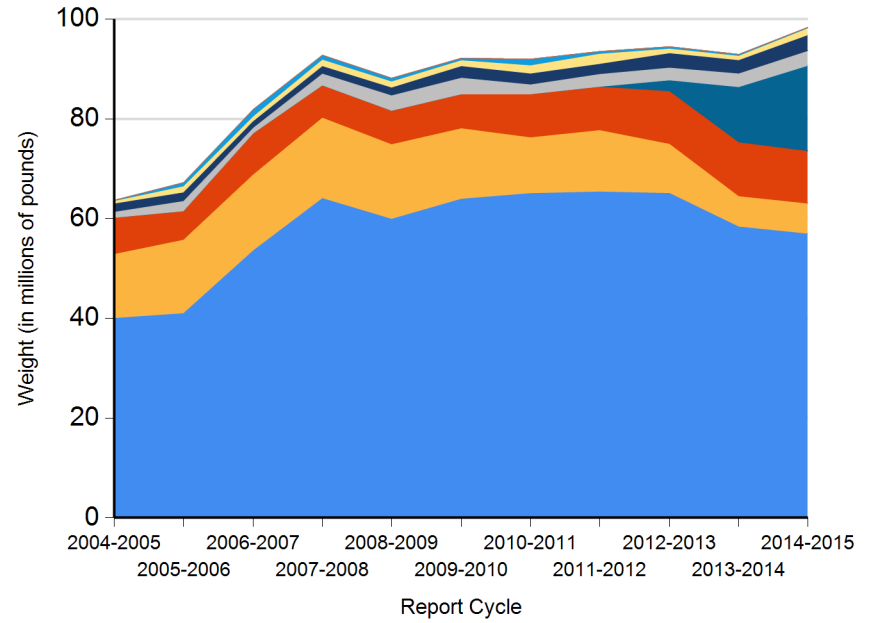


HHW Disposition By Disposition Method (City Of Los Angeles)



- TRC
- Reused
- Neutralization / Treatment
- Stabilization
- PaintCare
- Landfill
- Fuel Incineration
- Destructive Incineration
- Recycled

HHW Disposition By Disposition Method (Statewide)



- TRC
- Stabilization
- Neutralization / Treatment
- Reused
- Landfill
- PaintCare
- Destructive Incineration
- Fuel Incineration
- Recycled



DEPARTMENT OF RESOURCES RECYCLING AND RECOVERY

1001 I STREET, SACRAMENTO, CALIFORNIA 95814 • www.CalRecycle.ca.gov • (916) 322-4027
 P.O. BOX 4025, SACRAMENTO, CALIFORNIA 95812

Name of Public Agency Reporting: City Of Los Angeles
Contractor's Name: Clean Harbors Environmental Services
Participating Households: 104,629 **Method:** Number of Vehicles
 Participating Households includes non-residential (CESQG,schools,nonprofits,etc.): Yes
Service Area Households: 1,407,755

Participants Represented by Reporting Jurisdiction/Agency (i.e., individual city(ies), county(ies), other agency(ies)):

Los Angeles

Program Types:

Program Type	EPAID	Program Type	EPAID	Program Type	EPAID	Program Type	EPAID
Permanent Facility	CAH111000977	Permanent Facility	CAH111000978	Permanent Facility	CAH111000979	Permanent Facility	CAH111000981
Permanent Facility	CAH111000982	Permanent Facility	CAH111001123	Permanent Facility	CAH111001368	Permanent Facility	CAD981575947
Permanent Facility	CAD981692379	Temporary (periodic) Facility	CAH111001156	Temporary (periodic) Facility	CAH111001230	Temporary (periodic) Facility	CAH111001307
Temporary (periodic) Facility	CAH111001168	Temporary (periodic) Facility	CAH111001163	Temporary (periodic) Facility	CAH111001311	Temporary (periodic) Facility	CAH111001219
Temporary (periodic) Facility	CAH111001215	Temporary (periodic) Facility	CAH111001410	Temporary (periodic) Facility	CAH111001391	Curbside Program	CAR000148312
Curbside Program	CAD981690688	Curbside Program	CAD981576259	Curbside Program	CAD981576010	Curbside Program	CAD981692676
Curbside Program	CAL000304259						



DEPARTMENT OF RESOURCES RECYCLING AND RECOVERY

1001 I STREET, SACRAMENTO, CALIFORNIA 95814 • www.CalRecycle.ca.gov • (916) 322-4027
 P.O. BOX 4025, SACRAMENTO, CALIFORNIA 95812

Collection (pounds)	Material Type	Permanent Facility	Temporary (periodic) Facility	Mobile Facility	Recycle-only Facility	Door to Door (residential) Program	Curbside Program	Load Check	Other
Flammable and Poison	Flammable solids / liquids	894,299	15,420						
	Bulked flammable liquids								
	Oil-based paints	257,250	15,000						
	Paint Related Material (PRM)	81,750							
	Poisons	77,600	1,500						
	Reactive and explosive	387							
	Compressed gas cylinders	39,461	335						
	1 lb propane canister	9,029	57						
	Flammable and Poison subtotal	1,359,776	32,312						
PCB-containing	PCB-containing paint								
	Other PCB waste (includes ballasts)	8,017							
	PCB-containing subtotal	8,017							
Reclaimable	Antifreeze	27,900	900						
	Auto type batteries (motor vehicles)	94,202							
	Latex paint	1,660,000	78,250						
	Motor oil/oil products								
	Used oil filters (recyclables only)	9,000	5,170						
	Reclaimable subtotal	1,791,102	84,320						
Acid	Inorganic and organic acid	34,611	500						
Base	Inorganic and organic base	65,675	625						
Oxidizer	Neutral oxidizers, Organic peroxides, Oxidizing acid/base	14,849	250						
Asbestos	Asbestos	9,800							
Universal Waste (UW)*	Mercury containing automatic switches / thermometers / and novelties	151	27						
	Mercury containing thermostats	94							
	Mercury containing waste (other)	10							
	Lamps	47,485	960						
	Rechargeable batteries	16,663							
	Other batteries	125,939	1,950						
Electronic Devices (UW)	Aerosol cans								
	Covered Electronic Devices	870,562	63,328				994,538		



DEPARTMENT OF RESOURCES RECYCLING AND RECOVERY

1001 I STREET, SACRAMENTO, CALIFORNIA 95814 • www.CalRecycle.ca.gov • (916) 322-4027
 P.O. BOX 4025, SACRAMENTO, CALIFORNIA 95812

Collection (pounds)	Material Type	Permanent Facility	Temporary (periodic) Facility	Mobile Facility	Recycle-only Facility	Door to Door (residential) Program	Curbside Program	Load Check	Other
Electronic Devices (UW)	Other Electronic Devices	1,768,550	70,616				132,170		
	Electronic Devices (UW) subtotal	2,639,112	133,944				1,126,708		
	Universal Waste (UW)* + Electronic Devices (UW) subtotal	2,829,454	136,881				1,126,708		
Other	Home-generated sharps waste	45,300	525						
	Home-generated pharmaceutical waste	22,200	400						
	Treated wood	2,100							
	Aerosol Cans (Corrosive, Flammable, Poison)	128,500	2,100						
	Lighters	1,076	20						
	Non-PCB Ballasts	3,750							
	Non-RCRA Liquid-Lotions, Shampoos, Soaps, Cleaners	248,459	1,800						
	Non-RCRA Solid-Waxes and Putties	150,700	2,580						
	Other								
	Reuse Total	3,936							
	Other subtotal	606,021	7,425						
	Grand Total	6,719,305	262,313				1,126,708		



DEPARTMENT OF RESOURCES RECYCLING AND RECOVERY

1001 I STREET, SACRAMENTO, CALIFORNIA 95814 • www.CalRecycle.ca.gov • (916) 322-4027
 P.O. BOX 4025, SACRAMENTO, CALIFORNIA 95812

Disposition (pounds)	Material Type	Destructive Incineration	Fuel Incineration	Landfill	Neutralization / Treatment	Recycled	Reused	Stabilization	Steward
Flammable and Poison	Flammable solids / liquids	909,719							
	Bulked flammable liquids								
	Oil-based paints								272,250
	Paint Related Material (PRM)	81,750							
	Poisons	79,100							
	Reactive and explosive	387							
	Compressed gas cylinders	34					39,762		
	1 lb propane canister						9,086		
	Flammable and Poison subtotal	1,070,990				48,848			272,250
PCB-containing	PCB-containing paint								
	Other PCB waste (includes ballasts)			8,017					
	PCB-containing subtotal			8,017					
Reclaimable	Antifreeze					28,800			
	Auto type batteries (motor vehicles)					94,202			
	Latex paint								1,738,250
	Motor oil/oil products								
	Used oil filters (recyclables only)					14,170			
	Reclaimable subtotal					137,172			1,738,250
Acid	Inorganic and organic acid	35,111							
Base	Inorganic and organic base	66,300							
Oxidizer	Neutral oxidizers, Organic peroxides, Oxidizing acid/base	15,099							
Asbestos	Asbestos			9,800					
Universal Waste (UW)*	Mercury containing automatic switches / thermometers / and novelties					178			
	Mercury containing thermostats					94			
	Mercury containing waste (other)					10			
	Lamps					48,445			
	Rechargeable batteries					16,663			
	Other batteries					127,889			
	Aerosol cans								
Electronic Devices (UW)	Covered Electronic Devices					1,928,428			



DEPARTMENT OF RESOURCES RECYCLING AND RECOVERY

1001 I STREET, SACRAMENTO, CALIFORNIA 95814 • www.CalRecycle.ca.gov • (916) 322-4027
 P.O. BOX 4025, SACRAMENTO, CALIFORNIA 95812

Disposition (pounds)	Material Type	Destructive Incineration	Fuel Incineration	Landfill	Neutralization / Treatment	Recycled	Reused	Stabilization	Steward
Electronic Devices (UW)	Other Electronic Devices					1,971,336			
	Electronic Devices (UW) subtotal					3,899,764			
	Universal Waste (UW)* + Electronic Devices (UW) subtotal					4,093,043			
Other	Home-generated sharps waste	45,825							
	Home-generated pharmaceutical waste	22,600							
	Treated wood	2,100							
	Aerosol Cans (Corrosive, Flammable, Poison)	130,600							
	Lighters	1,096							
	Non-PCB Ballasts	3,750							
	Non-RCRA Liquid-Lotions, Shampoos, Soaps, Cleaners	250,259							
	Non-RCRA Solid-Waxes and Putties	152,100			1,180				
	Other								
	Reuse Total							3,936	
	Other subtotal	608,330		1,180			3,936		
	Grand Total	1,795,830		18,997		4,279,063	3,936		2,010,500