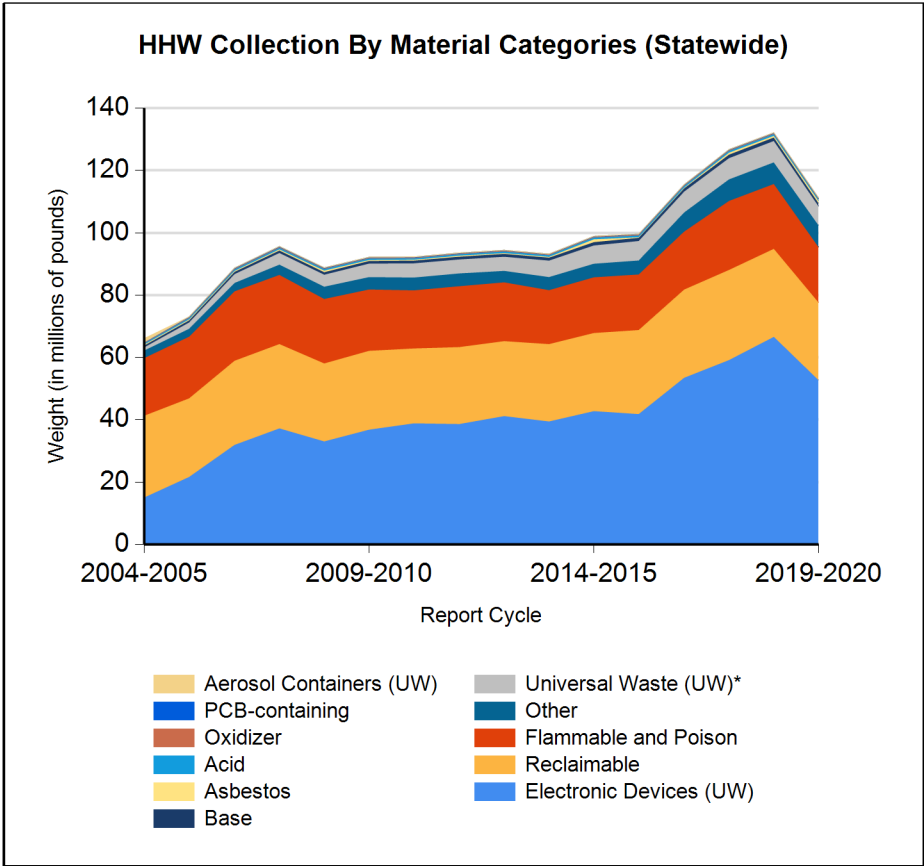
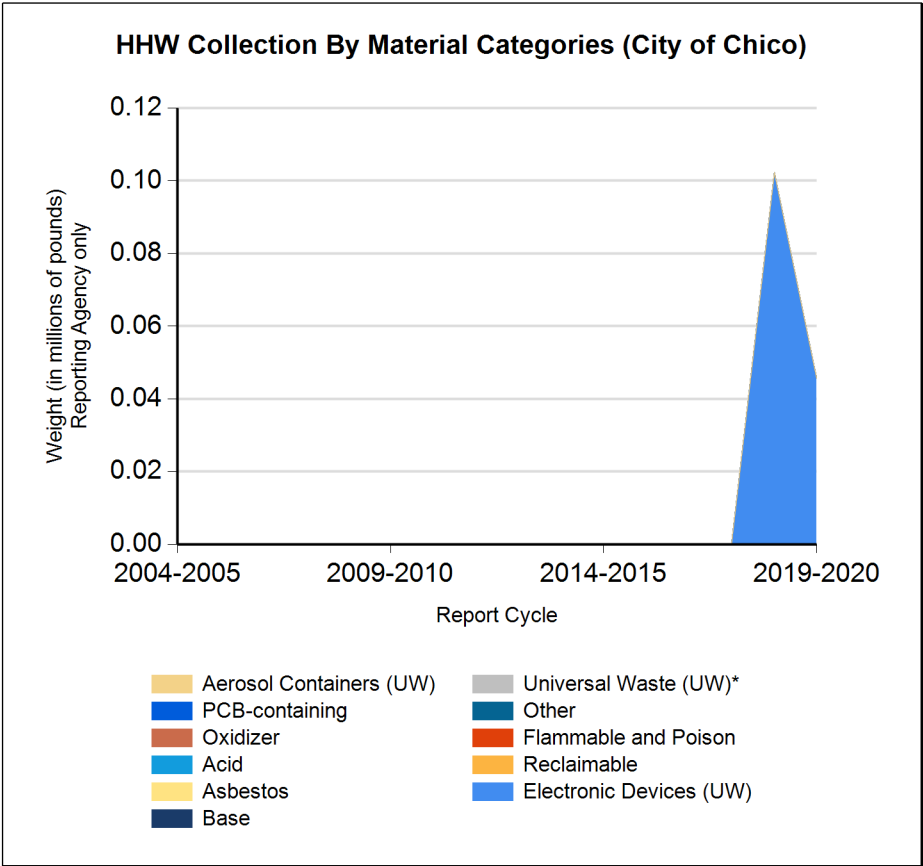


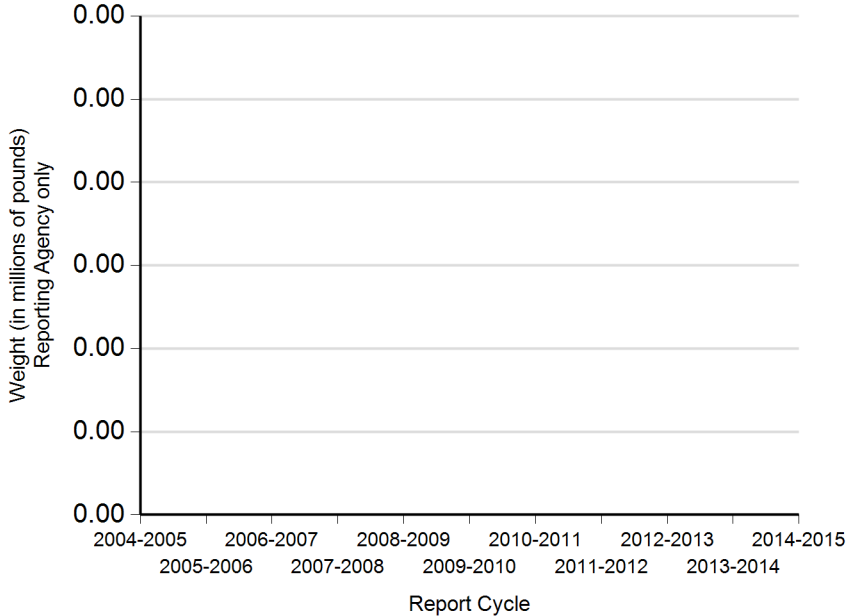


Form CalRecycle 303 Household Hazardous Waste Collection Information For 2019-2020

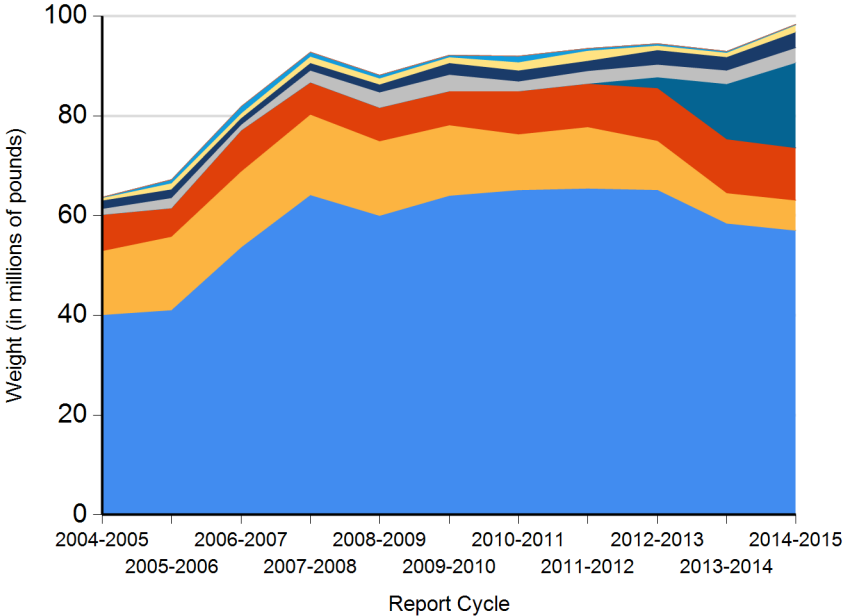




HHW Disposition By Disposition Method (City of Chico)



HHW Disposition By Disposition Method (Statewide)





Name of Public Agency Reporting: City of Chico

Contractor's Name: Onsite Electronics Recycling, and Tycoon Materials dba Happy Recycle

Participating Households: 775 **Method:** Designated Collectors did not track participating households. Estimate number of participating households were derived from the number of units collected and by assuming 1 unit per household. Collectors will begin tracking in the 2020-21 reporting period.

Participating Households includes non-residential (CESQG,schools,nonprofits,etc.): No

Service Area Households: 41,738

Participants Represented by Reporting Jurisdiction/Agency (i.e., individual city(ies), county(ies), other agency(ies)):

Chico

Program Types:

Program Type	EPAID	Program Type	EPAID	Program Type	EPAID
Recycle-only Facility	CAL000418386	Recycle-only Facility	CAL000433237	Recycle-only Facility	CAL000403623



DEPARTMENT OF RESOURCES RECYCLING AND RECOVERY

1001 I STREET, SACRAMENTO, CALIFORNIA 95814 • www.CalRecycle.ca.gov • (916) 322-4027
P.O. BOX 4025, SACRAMENTO, CALIFORNIA 95812

Collection (pounds)	Material Type	Permanent Facility	Temporary (periodic) Facility	Mobile Facility	Recycle-only Facility	Door to Door (residential) Program	Curbside Program	Load Check	Other
Flammable and Poison	Flammable solids / liquids								
	Bulked flammable liquids								
	Oil-based paints								
	Paint Related Material (PRM)								
	Poisons								
	Reactive and explosive								
	Compressed gas cylinders								
	1 lb propane canister								
	Flammable and Poison subtotal								
PCB-containing	PCB-containing paint								
	Other PCB waste (includes ballasts)								
	PCB-containing subtotal								
Reclaimable	Antifreeze								
	Auto type batteries (motor vehicles)								
	Latex paint								
	Motor oil/oil products								
	Used oil filters (recyclables only)								
	Reclaimable subtotal								
Acid	Inorganic and organic acid								
Base	Inorganic and organic base								
Oxidizer	Neutral oxidizers, Organic peroxides, Oxidizing acid/base								
Asbestos	Asbestos								
Universal Waste (UW)*	Mercury containing automatic switches / thermometers / and novelties								
	Mercury containing thermostats								
	Mercury containing waste (other)								
	Lamps								
	Rechargeable batteries								
	Other batteries								
	Aerosol cans								
Electronic Devices (UW)	Covered Electronic Devices				31,558				



DEPARTMENT OF RESOURCES RECYCLING AND RECOVERY

1001 I STREET, SACRAMENTO, CALIFORNIA 95814 • www.CalRecycle.ca.gov • (916) 322-4027
P.O. BOX 4025, SACRAMENTO, CALIFORNIA 95812

Collection (pounds)	Material Type	Permanent Facility	Temporary (periodic) Facility	Mobile Facility	Recycle-only Facility	Door to Door (residential) Program	Curbside Program	Load Check	Other
Electronic Devices (UW)	Other Electronic Devices				14,092				
	Electronic Devices (UW) subtotal				45,650				
	Universal Waste (UW)* + Electronic Devices (UW) subtotal				45,650				
Other	Home-generated sharps waste								
	Home-generated pharmaceutical waste								
	Treated wood								
	Other								
	Reuse Total								
	Other subtotal								
	Grand Total				45,650				



DEPARTMENT OF RESOURCES RECYCLING AND RECOVERY

1001 I STREET, SACRAMENTO, CALIFORNIA 95814 • www.CalRecycle.ca.gov • (916) 322-4027
P.O. BOX 4025, SACRAMENTO, CALIFORNIA 95812

Disposition (pounds)	Material Type	Destructive Incineration	Fuel Incineration	Landfill	Neutralization / Treatment	Recycled	Reused	Stabilization	Steward
Flammable and Poison	Flammable solids / liquids								
	Bulked flammable liquids								
	Oil-based paints								
	Paint Related Material (PRM)								
	Poisons								
	Reactive and explosive								
	Compressed gas cylinders								
	1 lb propane canister								
	Flammable and Poison subtotal								
PCB-containing	PCB-containing paint								
	Other PCB waste (includes ballasts)								
	PCB-containing subtotal								
Reclaimable	Antifreeze								
	Auto type batteries (motor vehicles)								
	Latex paint								
	Motor oil/oil products								
	Used oil filters (recyclables only)								
	Reclaimable subtotal								
Acid	Inorganic and organic acid								
Base	Inorganic and organic base								
Oxidizer	Neutral oxidizers, Organic peroxides, Oxidizing acid/base								
Asbestos	Asbestos								
Universal Waste (UW)*	Mercury containing automatic switches / thermometers / and novelties								
	Mercury containing thermostats								
	Mercury containing waste (other)								
	Lamps								
	Rechargeable batteries								
	Other batteries								
	Aerosol cans								
Electronic Devices (UW)	Covered Electronic Devices					31,558			



DEPARTMENT OF RESOURCES RECYCLING AND RECOVERY

1001 I STREET, SACRAMENTO, CALIFORNIA 95814 • www.CalRecycle.ca.gov • (916) 322-4027
P.O. BOX 4025, SACRAMENTO, CALIFORNIA 95812

Disposition (pounds)	Material Type	Destructive Incineration	Fuel Incineration	Landfill	Neutralization / Treatment	Recycled	Reused	Stabilization	Steward
Electronic Devices (UW)	Other Electronic Devices					14,092			
	Electronic Devices (UW) subtotal					45,650			
	Universal Waste (UW)* + Electronic Devices (UW) subtotal					45,650			
Other	Home-generated sharps waste								
	Home-generated pharmaceutical waste								
	Treated wood								
	Other								
	Reuse Total								
	Other subtotal								
	Grand Total					45,650			