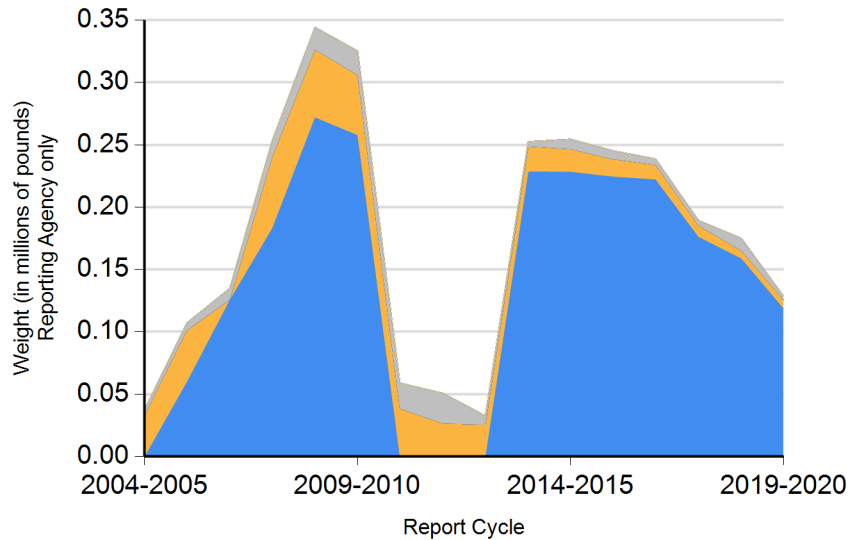




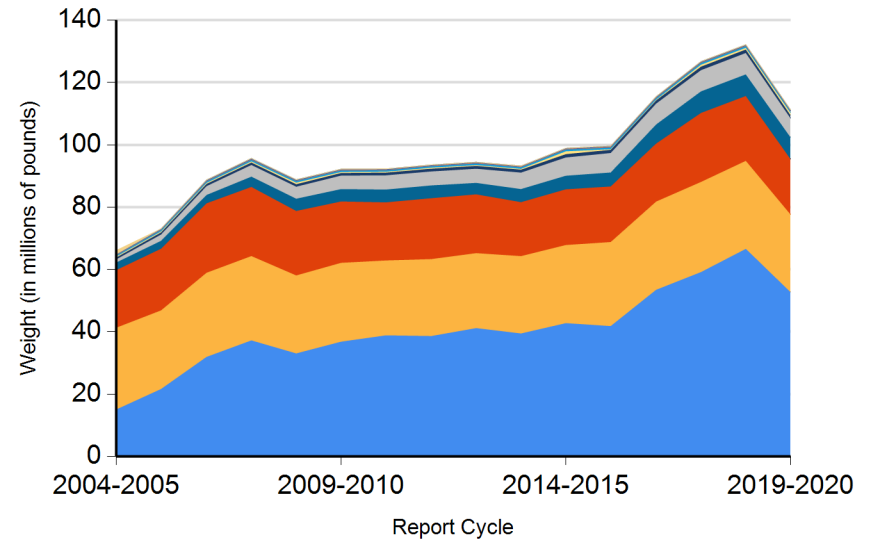
Form CalRecycle 303 Household Hazardous Waste Collection Information For 2019-2020

HHW Collection By Material Categories (City of Calabasas)



Aerosol Containers (UW)	Universal Waste (UW)*
PCB-containing	Other
Oxidizer	Flammable and Poison
Acid	Reclaimable
Asbestos	Electronic Devices (UW)
Base	

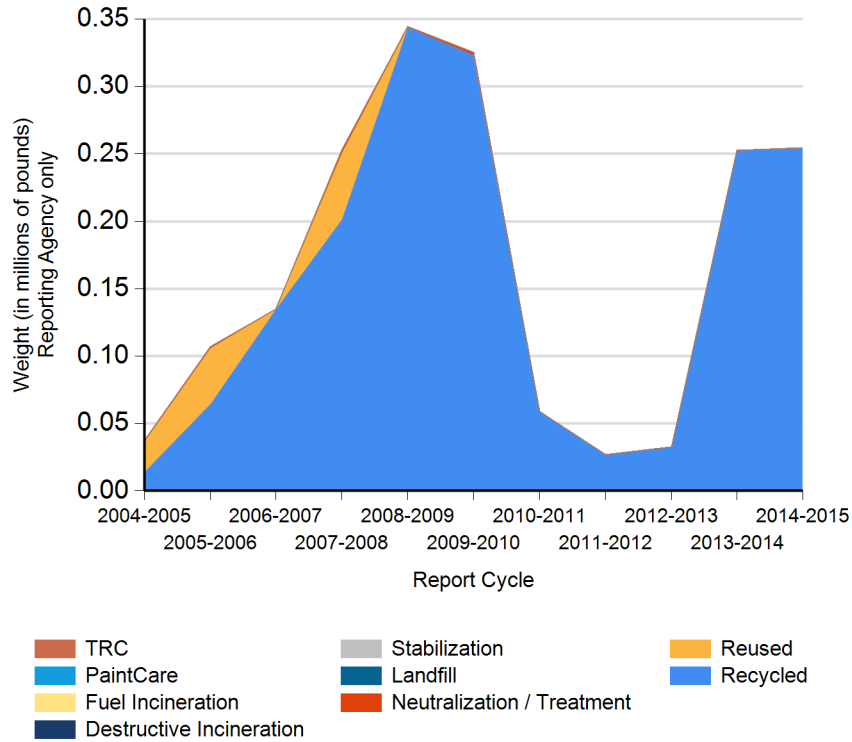
HHW Collection By Material Categories (Statewide)



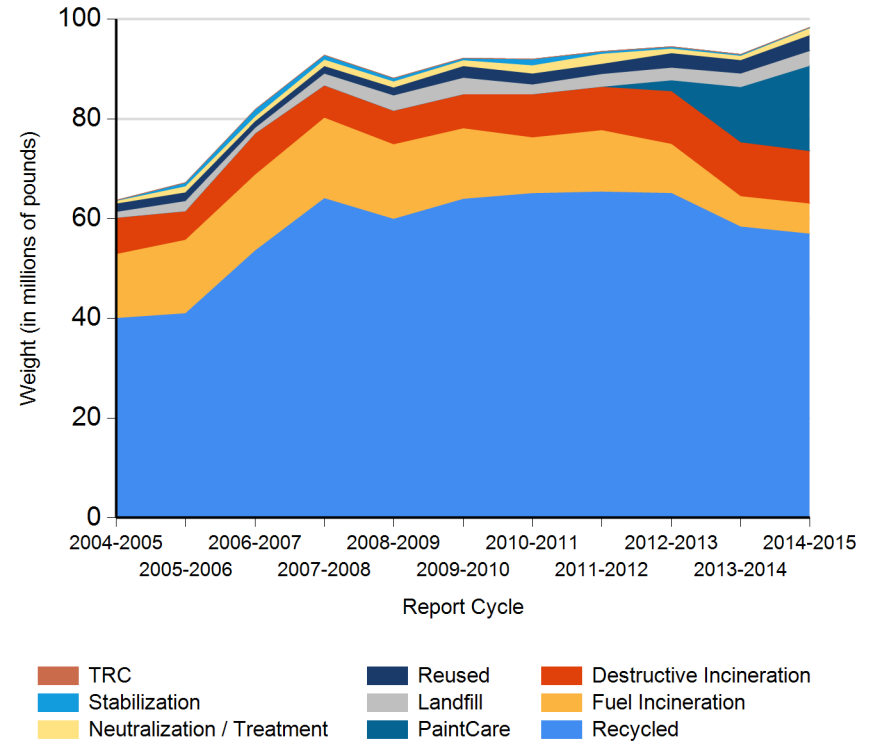
Aerosol Containers (UW)	Universal Waste (UW)*
PCB-containing	Other
Oxidizer	Flammable and Poison
Acid	Reclaimable
Asbestos	Electronic Devices (UW)
Base	



HHW Disposition By Disposition Method (City of Calabasas)



HHW Disposition By Disposition Method (Statewide)





# DEPARTMENT OF RESOURCES RECYCLING AND RECOVERY

1001 I STREET, SACRAMENTO, CALIFORNIA 95814 • [www.CalRecycle.ca.gov](http://www.CalRecycle.ca.gov) • (916) 322-4027  
P.O. BOX 4025, SACRAMENTO, CALIFORNIA 95812

**Name of Public Agency Reporting:** City of Calabasas

**Contractor's Name:** California Recycles & Waste Management

**Participating Households:** 2,000 **Method:** Number of Addresses

Participating Households includes non-residential (CESQG,schools,nonprofits,etc.): No

**Service Area Households:** 24,193

**Participants Represented by Reporting Jurisdiction/Agency (i.e., individual city(ies), county(ies), other agency(ies)):**

Calabasas

**Program Types:**

Program Type	EPAID
Mobile Facility	CAH111001397



# DEPARTMENT OF RESOURCES RECYCLING AND RECOVERY

1001 I STREET, SACRAMENTO, CALIFORNIA 95814 • www.CalRecycle.ca.gov • (916) 322-4027  
P.O. BOX 4025, SACRAMENTO, CALIFORNIA 95812

Collection (pounds)	Material Type	Permanent Facility	Temporary (periodic) Facility	Mobile Facility	Recycle-only Facility	Door to Door (residential) Program	Curbside Program	Load Check	Other
Flammable and Poison	Flammable solids / liquids								
	Bulked flammable liquids								
	Oil-based paints								
	Paint Related Material (PRM)								
	Poisons								
	Reactive and explosive								
	Compressed gas cylinders								
	1 lb propane canister								
	<b>Flammable and Poison subtotal</b>								
PCB-containing	PCB-containing paint								
	Other PCB waste (includes ballasts)								
	<b>PCB-containing subtotal</b>								
Reclaimable	Antifreeze			45					
	Auto type batteries (motor vehicles)			350					
	Latex paint			5,770					
	Motor oil/oil products			600					
	Used oil filters (recyclables only)			6					
	<b>Reclaimable subtotal</b>			<b>6,771</b>					
Acid	Inorganic and organic acid								
Base	Inorganic and organic base								
Oxidizer	Neutral oxidizers, Organic peroxides, Oxidizing acid/base								
Asbestos	Asbestos								
Universal Waste (UW)*	Mercury containing automatic switches / thermometers / and novelties								
	Mercury containing thermostats								
	Mercury containing waste (other)								
	Lamps								
	Rechargeable batteries								
	Other batteries			3,000					
	Aerosol cans								
Electronic Devices (UW)	Covered Electronic Devices			118,719					



DEPARTMENT OF RESOURCES RECYCLING AND RECOVERY

1001 I STREET, SACRAMENTO, CALIFORNIA 95814 • www.CalRecycle.ca.gov • (916) 322-4027  
P.O. BOX 4025, SACRAMENTO, CALIFORNIA 95812

Collection (pounds)	Material Type	Permanent Facility	Temporary (periodic) Facility	Mobile Facility	Recycle-only Facility	Door to Door (residential) Program	Curbside Program	Load Check	Other
Electronic Devices (UW)	Other Electronic Devices								
	Electronic Devices (UW) subtotal	118,719							
	Universal Waste (UW)* + Electronic Devices (UW) subtotal	121,719							
Other	Home-generated sharps waste								
	Home-generated pharmaceutical waste								
	Treated wood								
	Other								
	Reuse Total								
Other subtotal									
Grand Total		128,490							



# DEPARTMENT OF RESOURCES RECYCLING AND RECOVERY

1001 I STREET, SACRAMENTO, CALIFORNIA 95814 • www.CalRecycle.ca.gov • (916) 322-4027  
P.O. BOX 4025, SACRAMENTO, CALIFORNIA 95812

Disposition (pounds)	Material Type	Destructive Incineration	Fuel Incineration	Landfill	Neutralization / Treatment	Recycled	Reused	Stabilization	Steward
Flammable and Poison	Flammable solids / liquids								
	Bulked flammable liquids								
	Oil-based paints								
	Paint Related Material (PRM)								
	Poisons								
	Reactive and explosive								
	Compressed gas cylinders								
	1 lb propane canister								
	Flammable and Poison subtotal								
PCB-containing	PCB-containing paint								
	Other PCB waste (includes ballasts)								
	PCB-containing subtotal								
Reclaimable	Antifreeze					45			
	Auto type batteries (motor vehicles)					350			
	Latex paint					5,770			
	Motor oil/oil products					600			
	Used oil filters (recyclables only)					6			
	Reclaimable subtotal					6,771			
Acid	Inorganic and organic acid								
Base	Inorganic and organic base								
Oxidizer	Neutral oxidizers, Organic peroxides, Oxidizing acid/base								
Asbestos	Asbestos								
Universal Waste (UW)*	Mercury containing automatic switches / thermometers / and novelties								
	Mercury containing thermostats								
	Mercury containing waste (other)								
	Lamps								
	Rechargeable batteries								
	Other batteries					3,000			
	Aerosol cans								
Electronic Devices (UW)	Covered Electronic Devices					118,719			



DEPARTMENT OF RESOURCES RECYCLING AND RECOVERY

1001 I STREET, SACRAMENTO, CALIFORNIA 95814 • www.CalRecycle.ca.gov • (916) 322-4027  
P.O. BOX 4025, SACRAMENTO, CALIFORNIA 95812

Disposition (pounds)	Material Type	Destructive Incineration	Fuel Incineration	Landfill	Neutralization / Treatment	Recycled	Reused	Stabilization	Steward
Electronic Devices (UW)	Other Electronic Devices								
	Electronic Devices (UW) subtotal	118,719							
	Universal Waste (UW)* + Electronic Devices (UW) subtotal	121,719							
Other	Home-generated sharps waste								
	Home-generated pharmaceutical waste								
	Treated wood								
	Other								
	Reuse Total								
Other subtotal									
Grand Total		128,490							