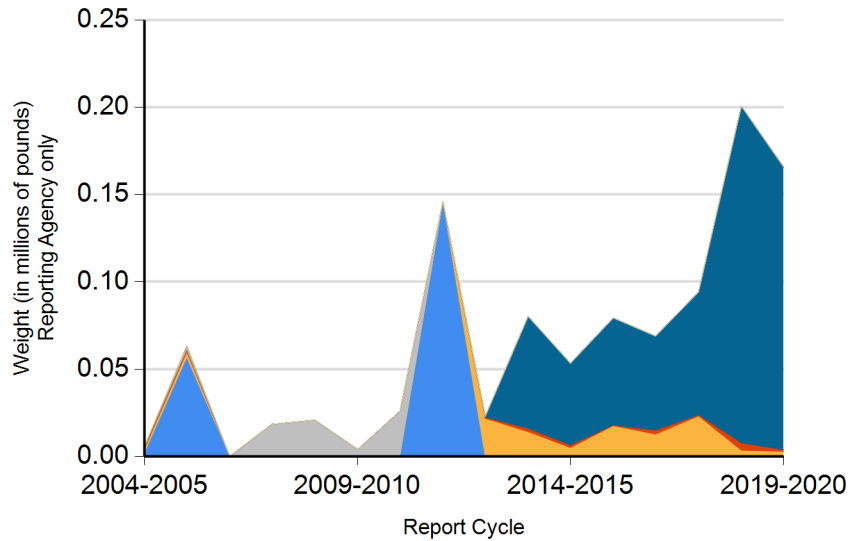




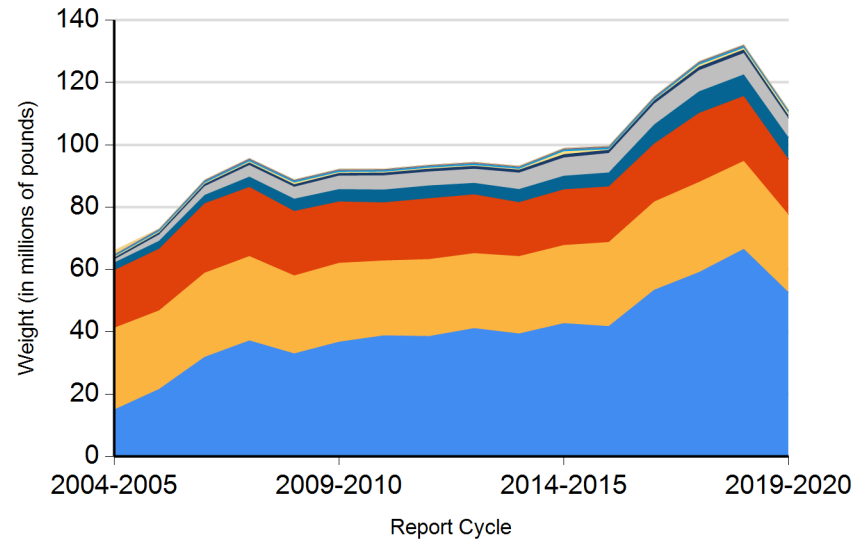
Form CalRecycle 303 Household Hazardous Waste Collection Information For 2019-2020

HHW Collection By Material Categories (City of Berkeley)



- Aerosol Containers (UW)
- PCB-containing
- Oxidizer
- Acid
- Asbestos
- Base
- Universal Waste (UW)*
- Other
- Flammable and Poison
- Reclaimable
- Electronic Devices (UW)

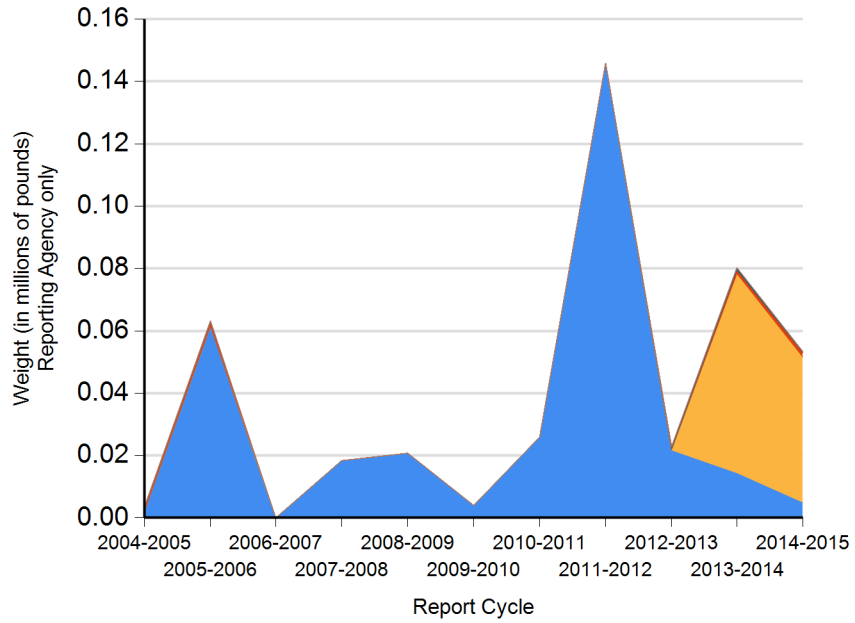
HHW Collection By Material Categories (Statewide)



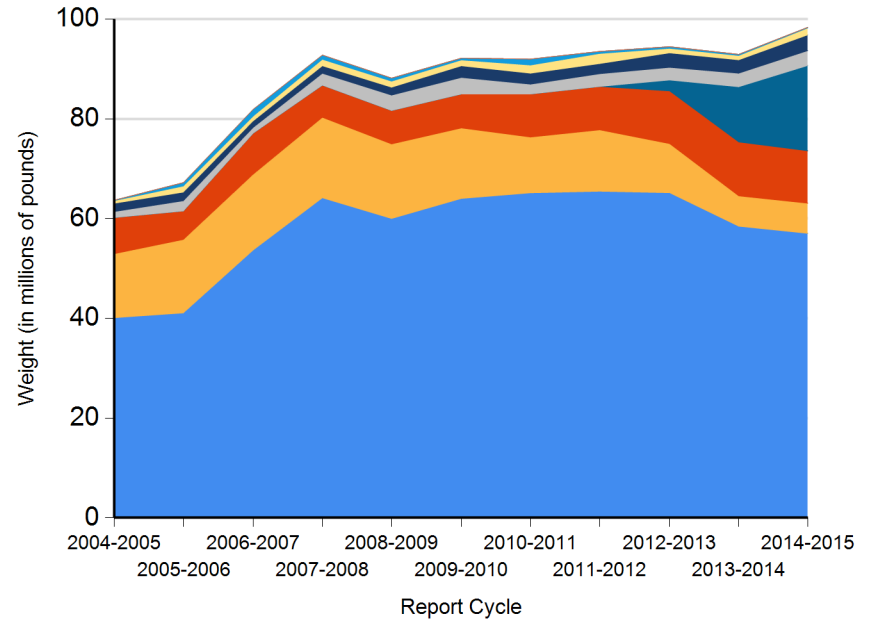
- Aerosol Containers (UW)
- PCB-containing
- Oxidizer
- Acid
- Asbestos
- Base
- Universal Waste (UW)*
- Other
- Flammable and Poison
- Reclaimable
- Electronic Devices (UW)



HHW Disposition By Disposition Method (City of Berkeley)



HHW Disposition By Disposition Method (Statewide)





DEPARTMENT OF RESOURCES RECYCLING AND RECOVERY

1001 I STREET, SACRAMENTO, CALIFORNIA 95814 • www.CalRecycle.ca.gov • (916) 322-4027
P.O. BOX 4025, SACRAMENTO, CALIFORNIA 95812

Name of Public Agency Reporting: City of Berkeley

Contractor's Name: City of Berkeley - Zero Waste

Participating Households: 20,997 **Method:** Number of Vehicles

Participating Households includes non-residential (CESQG,schools,nonprofits,etc.): Yes

Service Area Households: 114,461

Participants Represented by Reporting Jurisdiction/Agency (i.e., individual city(ies), county(ies), other agency(ies)):

Berkeley

Program Types:

Program Type	EPAID	Program Type	EPAID	Program Type	EPAID	Program Type	EPAID
Permanent Facility	CAL000021789	Permanent Facility	CAL000041568	Temporary (periodic) Facility	CAD980888192	Load Check	CAL000021789



DEPARTMENT OF RESOURCES RECYCLING AND RECOVERY

1001 I STREET, SACRAMENTO, CALIFORNIA 95814 • www.CalRecycle.ca.gov • (916) 322-4027
 P.O. BOX 4025, SACRAMENTO, CALIFORNIA 95812

Collection (pounds)	Material Type	Permanent Facility	Temporary (periodic) Facility	Mobile Facility	Recycle-only Facility	Door to Door (residential) Program	Curbside Program	Load Check	Other
Flammable and Poison	Flammable solids / liquids	480							
	Bulked flammable liquids								
	Oil-based paints								
	Paint Related Material (PRM)								
	Poisons							6	
	Reactive and explosive								
	Compressed gas cylinders	343						201	
	1 lb propane canister								
Flammable and Poison subtotal		823						207	
PCB-containing	PCB-containing paint								
	Other PCB waste (includes ballasts)								
	PCB-containing subtotal								
Reclaimable	Antifreeze								
	Auto type batteries (motor vehicles)								
	Latex paint	2,096							
	Motor oil/oil products	671							
	Used oil filters (recyclables only)	85							
	Reclaimable subtotal		2,852						
Acid	Inorganic and organic acid							31	
Base	Inorganic and organic base							27	
Oxidizer	Neutral oxidizers, Organic peroxides, Oxidizing acid/base	220							
Asbestos	Asbestos								
Universal Waste (UW)*	Mercury containing automatic switches / thermometers / and novelties								
	Mercury containing thermostats								
	Mercury containing waste (other)								
	Lamps								
	Rechargeable batteries								
	Other batteries								
	Aerosol cans	35						35	
Electronic Devices (UW)	Covered Electronic Devices								



DEPARTMENT OF RESOURCES RECYCLING AND RECOVERY

1001 I STREET, SACRAMENTO, CALIFORNIA 95814 • www.CalRecycle.ca.gov • (916) 322-4027
 P.O. BOX 4025, SACRAMENTO, CALIFORNIA 95812

Collection (pounds)	Material Type	Permanent Facility	Temporary (periodic) Facility	Mobile Facility	Recycle-only Facility	Door to Door (residential) Program	Curbside Program	Load Check	Other
Electronic Devices (UW)	Other Electronic Devices								
	Electronic Devices (UW) subtotal								
	Universal Waste (UW)* + Electronic Devices (UW) subtotal	35						35	
Other	Home-generated sharps waste	301							
	Home-generated pharmaceutical waste	366							
	Treated wood	161,000							
	Other								
	Reuse Total								
	Other subtotal	161,667							
	Grand Total	165,597						300	



DEPARTMENT OF RESOURCES RECYCLING AND RECOVERY

1001 I STREET, SACRAMENTO, CALIFORNIA 95814 • www.CalRecycle.ca.gov • (916) 322-4027
 P.O. BOX 4025, SACRAMENTO, CALIFORNIA 95812

Disposition (pounds)	Material Type	Destructive Incineration	Fuel Incineration	Landfill	Neutralization / Treatment	Recycled	Reused	Stabilization	Steward
Flammable and Poison	Flammable solids / liquids		480						
	Bulked flammable liquids								
	Oil-based paints								
	Paint Related Material (PRM)								
	Poisons	6							
	Reactive and explosive								
	Compressed gas cylinders	281					263		
	1 lb propane canister								
	Flammable and Poison subtotal	287	480			263			
PCB-containing	PCB-containing paint								
	Other PCB waste (includes ballasts)								
	PCB-containing subtotal								
Reclaimable	Antifreeze								
	Auto type batteries (motor vehicles)								
	Latex paint					2,096			
	Motor oil/oil products					671			
	Used oil filters (recyclables only)					85			
	Reclaimable subtotal					2,852			
Acid	Inorganic and organic acid	31							
Base	Inorganic and organic base	27							
Oxidizer	Neutral oxidizers, Organic peroxides, Oxidizing acid/base	220							
Asbestos	Asbestos								
Universal Waste (UW)*	Mercury containing automatic switches / thermometers / and novelties								
	Mercury containing thermostats								
	Mercury containing waste (other)								
	Lamps								
	Rechargeable batteries								
	Other batteries								
	Aerosol cans			70					
Electronic Devices (UW)	Covered Electronic Devices								



DEPARTMENT OF RESOURCES RECYCLING AND RECOVERY

1001 I STREET, SACRAMENTO, CALIFORNIA 95814 • www.CalRecycle.ca.gov • (916) 322-4027
 P.O. BOX 4025, SACRAMENTO, CALIFORNIA 95812

Disposition (pounds)	Material Type	Destructive Incineration	Fuel Incineration	Landfill	Neutralization / Treatment	Recycled	Reused	Stabilization	Steward
Electronic Devices (UW)	Other Electronic Devices								
	Electronic Devices (UW) subtotal								
	Universal Waste (UW)* + Electronic Devices (UW) subtotal			70					
Other	Home-generated sharps waste	301							
	Home-generated pharmaceutical waste	366							
	Treated wood			161,000					
	Other								
	Reuse Total								
Other subtotal		667		161,000					
Grand Total		1,232	550	161,000		3,115			