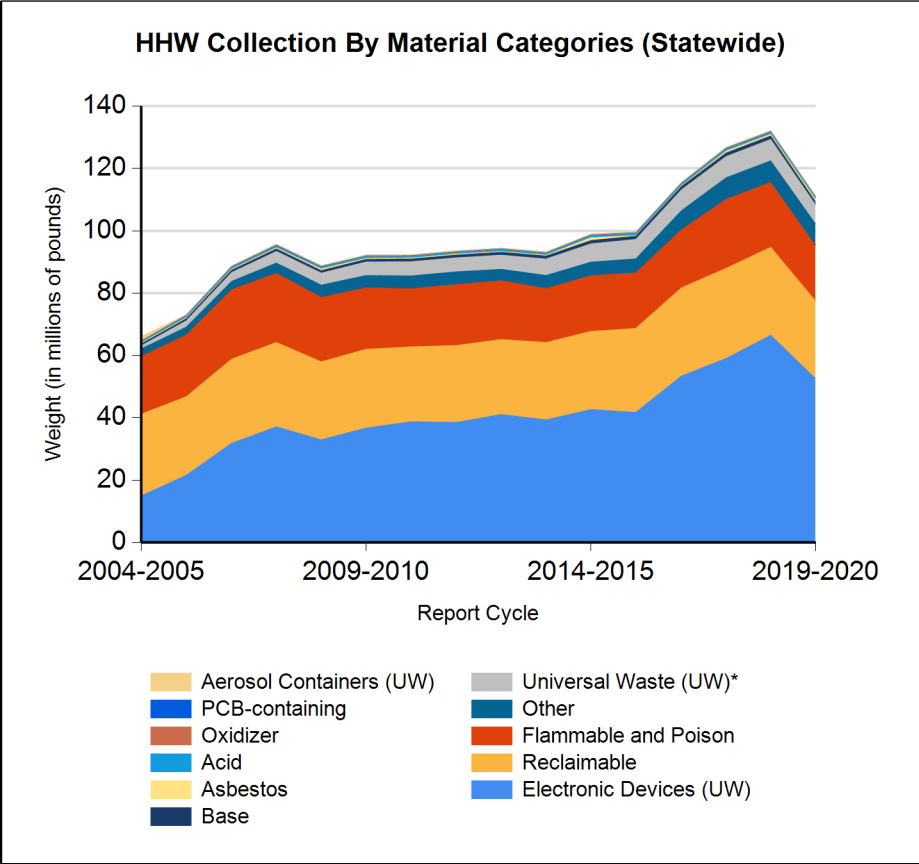
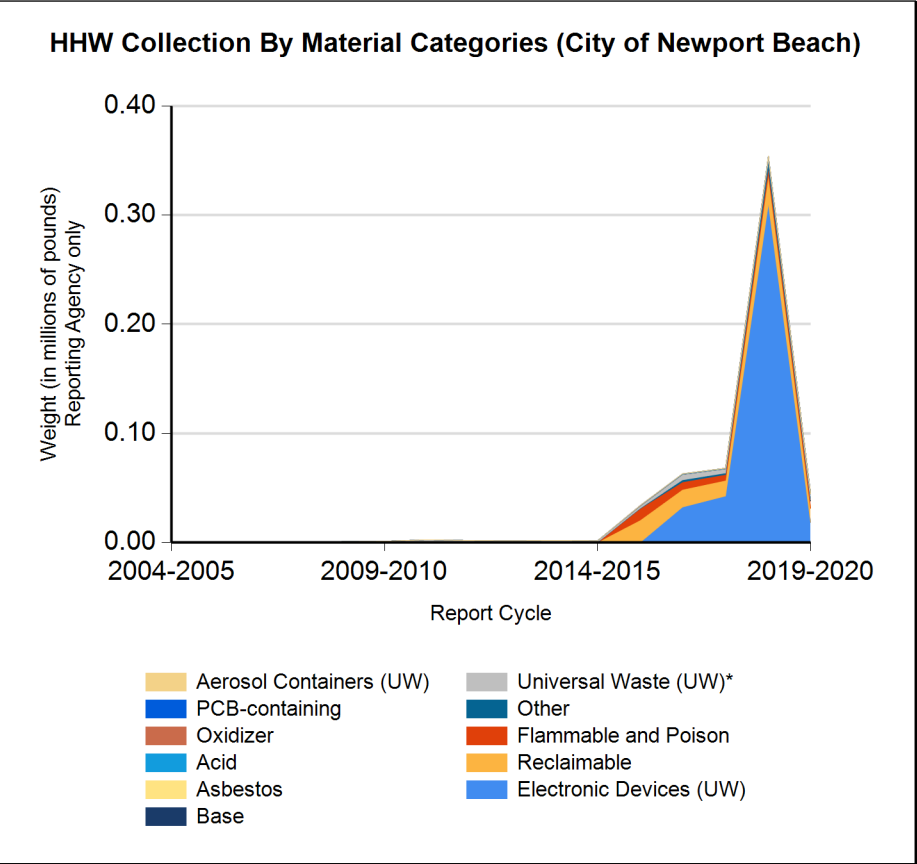


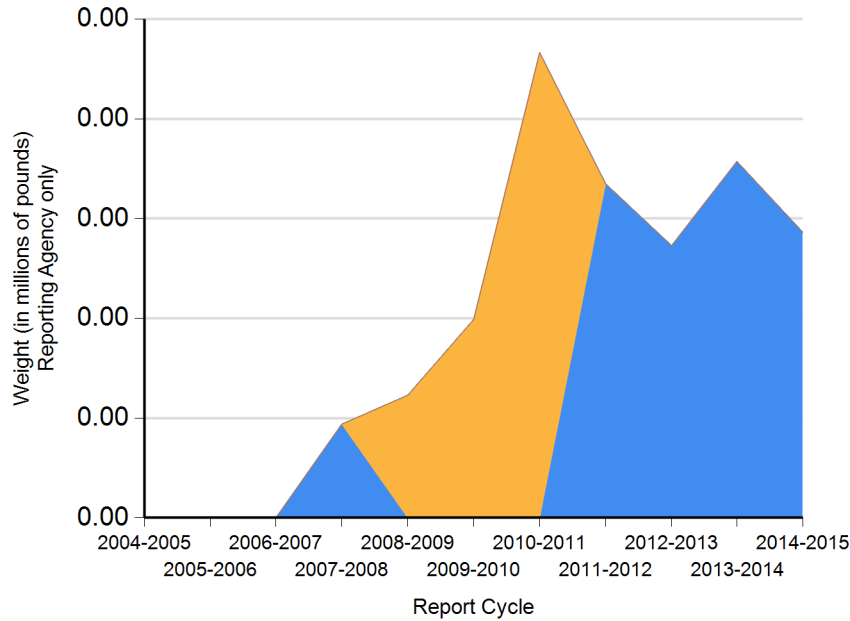


Form CalRecycle 303 Household Hazardous Waste Collection Information For 2019-2020

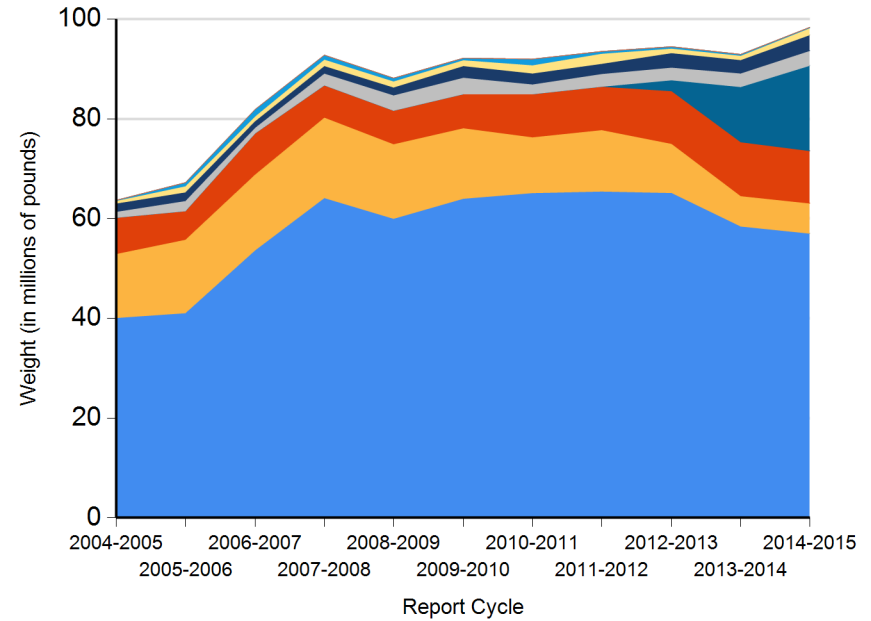




HHW Disposition By Disposition Method (City of Newport Beach)



HHW Disposition By Disposition Method (Statewide)





DEPARTMENT OF RESOURCES RECYCLING AND RECOVERY

1001 I STREET, SACRAMENTO, CALIFORNIA 95814 • www.CalRecycle.ca.gov • (916) 322-4027
P.O. BOX 4025, SACRAMENTO, CALIFORNIA 95812

Name of Public Agency Reporting: City of Newport Beach

Contractor's Name: CR&R

Participating Households: 915 **Method:** Number of Addresses

Participating Households includes non-residential (CESQG,schools,nonprofits,etc.): No

Service Area Households: 44,782

Participants Represented by Reporting Jurisdiction/Agency (i.e., individual city(ies), county(ies), other agency(ies)):

Newport Beach

Program Types:

Program Type	EPAID	Program Type	EPAID	Program Type	EPAID	Program Type	EPAID
Temporary (periodic) Facility	CAD981973431	Door to Door (residential) Program	CAR000202937	National Prescription Drug Take Back Day	CAD981972953	Used Oil Drop-off Locations	CAD981692098
City Operations Collection (949 W. 16th St) of HHW from Public Right of way	CAL920685592	City Operations Collection (592 Superior) of HHW from Public Right of way	CAD981973431				



DEPARTMENT OF RESOURCES RECYCLING AND RECOVERY

1001 I STREET, SACRAMENTO, CALIFORNIA 95814 • www.CalRecycle.ca.gov • (916) 322-4027
P.O. BOX 4025, SACRAMENTO, CALIFORNIA 95812

Collection (pounds)	Material Type	Permanent Facility	Temporary (periodic) Facility	Mobile Facility	Recycle-only Facility	Door to Door (residential) Program	Curbside Program	Load Check	Other
Flammable and Poison	Flammable solids / liquids	1,850				10			
	Bulked flammable liquids								
	Oil-based paints					1,000			
	Paint Related Material (PRM)					2,850			
	Poisons					950			
	Reactive and explosive								
	Compressed gas cylinders					55			
	1 lb propane canister								
	Flammable and Poison subtotal	1,850				4,865			
PCB-containing	PCB-containing paint								
	Other PCB waste (includes ballasts)								
	PCB-containing subtotal								
Reclaimable	Antifreeze								
	Auto type batteries (motor vehicles)								
	Latex paint					12,500			
	Motor oil/oil products	440							
	Used oil filters (recyclables only)								
	Reclaimable subtotal	440				12,500			
Acid	Inorganic and organic acid								
Base	Inorganic and organic base	110				100			
Oxidizer	Neutral oxidizers, Organic peroxides, Oxidizing acid/base	30				10			
Asbestos	Asbestos								
Universal Waste (UW)*	Mercury containing automatic switches / thermometers / and novelties								
	Mercury containing thermostats								
	Mercury containing waste (other)								
	Lamps					650			
	Rechargeable batteries					60			
	Other batteries		3,075			865			
	Aerosol cans	160				500			
Electronic Devices (UW)	Covered Electronic Devices					14,960			



DEPARTMENT OF RESOURCES RECYCLING AND RECOVERY

1001 I STREET, SACRAMENTO, CALIFORNIA 95814 • www.CalRecycle.ca.gov • (916) 322-4027
P.O. BOX 4025, SACRAMENTO, CALIFORNIA 95812

Collection (pounds)	Material Type	Permanent Facility	Temporary (periodic) Facility	Mobile Facility	Recycle-only Facility	Door to Door (residential) Program	Curbside Program	Load Check	Other
Electronic Devices (UW)	Other Electronic Devices					3,276			
	Electronic Devices (UW) subtotal					18,236			
	Universal Waste (UW)* + Electronic Devices (UW) subtotal	160	3,075			20,311			
Other	Home-generated sharps waste					697			
	Home-generated pharmaceutical waste		100						
	Treated wood								
	Non-RCRA Solids					250			
	Other								
	Reuse Total								
	Other subtotal		100			947			
	Grand Total	2,590	3,175			38,733			



DEPARTMENT OF RESOURCES RECYCLING AND RECOVERY

1001 I STREET, SACRAMENTO, CALIFORNIA 95814 • www.CalRecycle.ca.gov • (916) 322-4027
P.O. BOX 4025, SACRAMENTO, CALIFORNIA 95812

Disposition (pounds)	Material Type	Destructive Incineration	Fuel Incineration	Landfill	Neutralization / Treatment	Recycled	Reused	Stabilization	Steward
Flammable and Poison	Flammable solids / liquids	1,860							
	Bulked flammable liquids								
	Oil-based paints		1,000						
	Paint Related Material (PRM)		2,850						
	Poisons			950					
	Reactive and explosive								
	Compressed gas cylinders					55			
	1 lb propane canister								
	Flammable and Poison subtotal	1,860	3,850	950		55			
PCB-containing	PCB-containing paint								
	Other PCB waste (includes ballasts)								
	PCB-containing subtotal								
Reclaimable	Antifreeze								
	Auto type batteries (motor vehicles)								
	Latex paint					12,500			
	Motor oil/oil products					440			
	Used oil filters (recyclables only)								
	Reclaimable subtotal					12,940			
Acid	Inorganic and organic acid								
Base	Inorganic and organic base				210				
Oxidizer	Neutral oxidizers, Organic peroxides, Oxidizing acid/base	40							
Asbestos	Asbestos								
Universal Waste (UW)*	Mercury containing automatic switches / thermometers / and novelties								
	Mercury containing thermostats								
	Mercury containing waste (other)								
	Lamps					650			
	Rechargeable batteries					60			
	Other batteries	50				3,890			
	Aerosol cans	660							
Electronic Devices (UW)	Covered Electronic Devices					14,960			



DEPARTMENT OF RESOURCES RECYCLING AND RECOVERY

1001 I STREET, SACRAMENTO, CALIFORNIA 95814 • www.CalRecycle.ca.gov • (916) 322-4027
P.O. BOX 4025, SACRAMENTO, CALIFORNIA 95812

Disposition (pounds)	Material Type	Destructive Incineration	Fuel Incineration	Landfill	Neutralization / Treatment	Recycled	Reused	Stabilization	Steward
Electronic Devices (UW)	Other Electronic Devices					3,276			
	Electronic Devices (UW) subtotal					18,236			
	Universal Waste (UW)* + Electronic Devices (UW) subtotal	710				22,836			
Other	Home-generated sharps waste	697							
	Home-generated pharmaceutical waste		100						
	Treated wood								
	Non-RCRA Solids			250					
	Other								
	Reuse Total								
	Other subtotal	697	100	250					
	Grand Total	3,307	3,950	1,200	210	35,831			