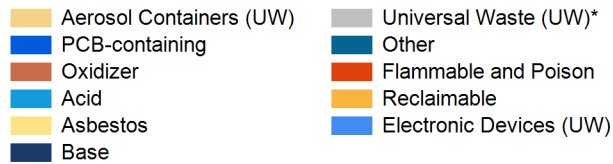
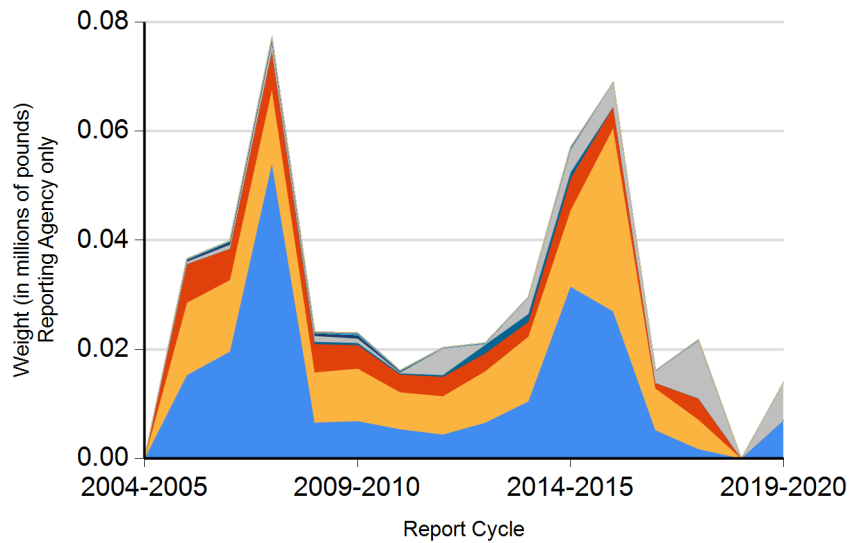


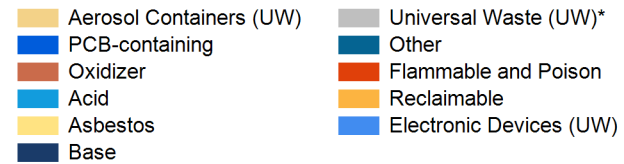
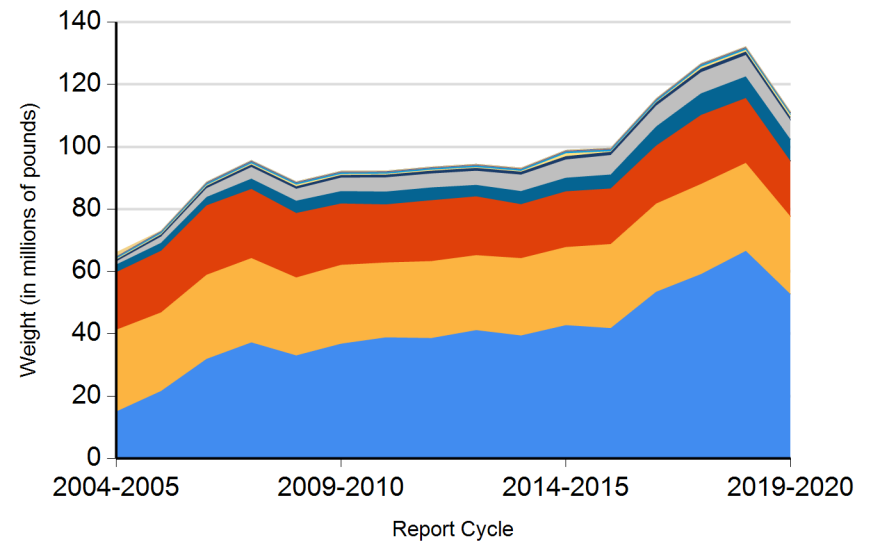


Form CalRecycle 303 Household Hazardous Waste Collection Information For 2019-2020

HHW Collection By Material Categories (City Of Laguna Beach)

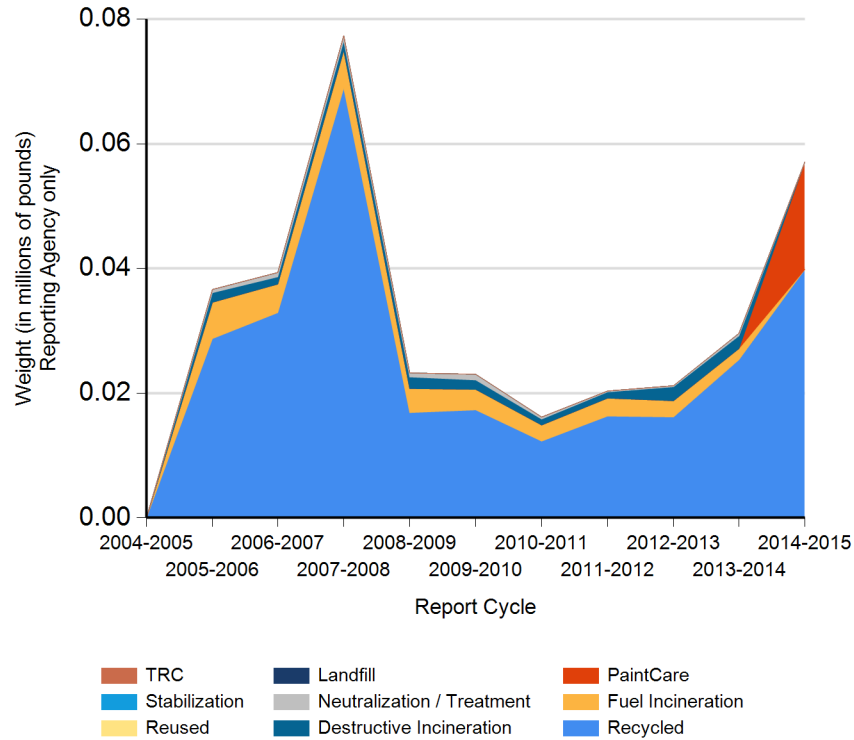


HHW Collection By Material Categories (Statewide)

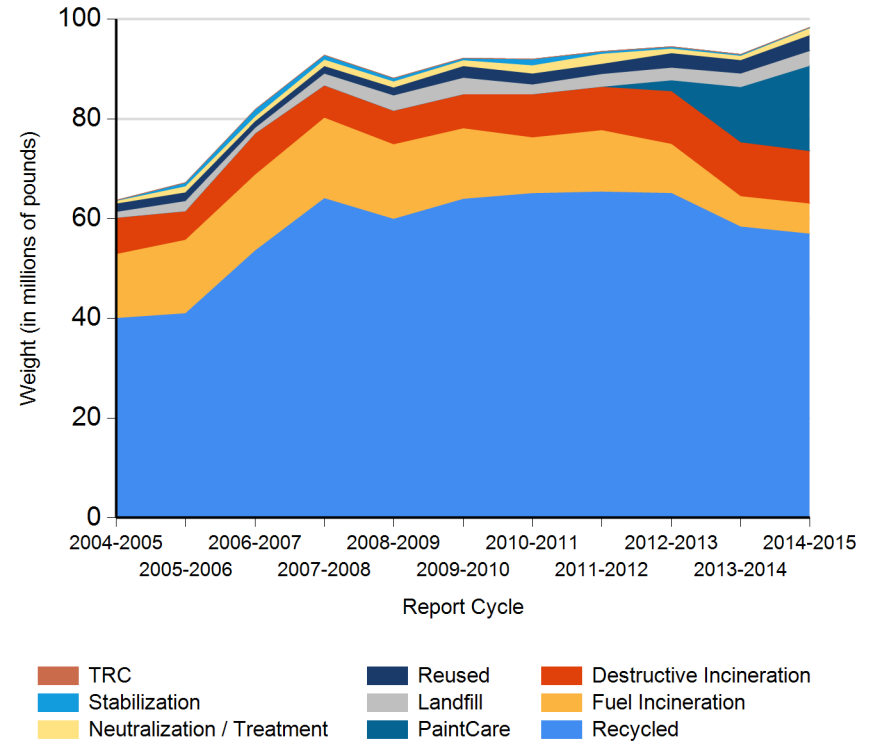




HHW Disposition By Disposition Method (City Of Laguna Beach)



HHW Disposition By Disposition Method (Statewide)





Name of Public Agency Reporting: City Of Laguna Beach

Contractor's Name: Clean Harbors

Participating Households: 10,879 **Method:** Number of Addresses

Participating Households includes non-residential (CESQG,schools,nonprofits,etc.): No

Service Area Households: 10,879

Participants Represented by Reporting Jurisdiction/Agency (i.e., individual city(ies), county(ies), other agency(ies)):

Laguna Beach

Program Types:

Program Type	EPAID	Program Type	EPAID	Program Type	EPAID	Program Type	EPAID
Temporary (periodic) Facility	CAH111001265	Mobile Facility	CAH111001296	Door to Door (residential) Program	CAH111001296	Curbside Program	CAH111001265
community E-waste event							



DEPARTMENT OF RESOURCES RECYCLING AND RECOVERY

1001 I STREET, SACRAMENTO, CALIFORNIA 95814 • www.CalRecycle.ca.gov • (916) 322-4027
P.O. BOX 4025, SACRAMENTO, CALIFORNIA 95812

Collection (pounds)	Material Type	Permanent Facility	Temporary (periodic) Facility	Mobile Facility	Recycle-only Facility	Door to Door (residential) Program	Curbside Program	Load Check	Other
Flammable and Poison	Flammable solids / liquids								
	Bulked flammable liquids								
	Oil-based paints								
	Paint Related Material (PRM)								
	Poisons								
	Reactive and explosive								
	Compressed gas cylinders								
	1 lb propane canister								
	Flammable and Poison subtotal								
PCB-containing	PCB-containing paint								
	Other PCB waste (includes ballasts)								
	PCB-containing subtotal								
Reclaimable	Antifreeze								
	Auto type batteries (motor vehicles)								
	Latex paint								
	Motor oil/oil products								
	Used oil filters (recyclables only)								
	Reclaimable subtotal								
Acid	Inorganic and organic acid								
Base	Inorganic and organic base								
Oxidizer	Neutral oxidizers, Organic peroxides, Oxidizing acid/base								
Asbestos	Asbestos								
Universal Waste (UW)*	Mercury containing automatic switches / thermometers / and novelties								
	Mercury containing thermostats								
	Mercury containing waste (other)								
	Lamps					7,000			
	Rechargeable batteries								
	Other batteries								
	Aerosol cans								
Electronic Devices (UW)	Covered Electronic Devices					7,000			



DEPARTMENT OF RESOURCES RECYCLING AND RECOVERY

1001 I STREET, SACRAMENTO, CALIFORNIA 95814 • www.CalRecycle.ca.gov • (916) 322-4027
P.O. BOX 4025, SACRAMENTO, CALIFORNIA 95812

Collection (pounds)	Material Type	Permanent Facility	Temporary (periodic) Facility	Mobile Facility	Recycle-only Facility	Door to Door (residential) Program	Curbside Program	Load Check	Other
Electronic Devices (UW)	Other Electronic Devices								
	Electronic Devices (UW) subtotal	7,000							
	Universal Waste (UW)* + Electronic Devices (UW) subtotal	14,000							
Other	Home-generated sharps waste								
	Home-generated pharmaceutical waste								
	Treated wood								
	Other								
	Reuse Total								
Other subtotal									
Grand Total		14,000							



DEPARTMENT OF RESOURCES RECYCLING AND RECOVERY

1001 I STREET, SACRAMENTO, CALIFORNIA 95814 • www.CalRecycle.ca.gov • (916) 322-4027
P.O. BOX 4025, SACRAMENTO, CALIFORNIA 95812

Disposition (pounds)	Material Type	Destructive Incineration	Fuel Incineration	Landfill	Neutralization / Treatment	Recycled	Reused	Stabilization	Steward
Flammable and Poison	Flammable solids / liquids								
	Bulked flammable liquids								
	Oil-based paints								
	Paint Related Material (PRM)								
	Poisons								
	Reactive and explosive								
	Compressed gas cylinders								
	1 lb propane canister								
	Flammable and Poison subtotal								
PCB-containing	PCB-containing paint								
	Other PCB waste (includes ballasts)								
	PCB-containing subtotal								
Reclaimable	Antifreeze								
	Auto type batteries (motor vehicles)								
	Latex paint								
	Motor oil/oil products								
	Used oil filters (recyclables only)								
	Reclaimable subtotal								
Acid	Inorganic and organic acid								
Base	Inorganic and organic base								
Oxidizer	Neutral oxidizers, Organic peroxides, Oxidizing acid/base								
Asbestos	Asbestos								
Universal Waste (UW)*	Mercury containing automatic switches / thermometers / and novelties								
	Mercury containing thermostats								
	Mercury containing waste (other)								
	Lamps					7,000			
	Rechargeable batteries								
	Other batteries								
	Aerosol cans								
Electronic Devices (UW)	Covered Electronic Devices					7,000			



DEPARTMENT OF RESOURCES RECYCLING AND RECOVERY

1001 I STREET, SACRAMENTO, CALIFORNIA 95814 • www.CalRecycle.ca.gov • (916) 322-4027
P.O. BOX 4025, SACRAMENTO, CALIFORNIA 95812

Disposition (pounds)	Material Type	Destructive Incineration	Fuel Incineration	Landfill	Neutralization / Treatment	Recycled	Reused	Stabilization	Steward
Electronic Devices (UW)	Other Electronic Devices								
	Electronic Devices (UW) subtotal	7,000							
	Universal Waste (UW)* + Electronic Devices (UW) subtotal	14,000							
Other	Home-generated sharps waste								
	Home-generated pharmaceutical waste								
	Treated wood								
	Other								
	Reuse Total								
Other subtotal									
Grand Total		14,000							