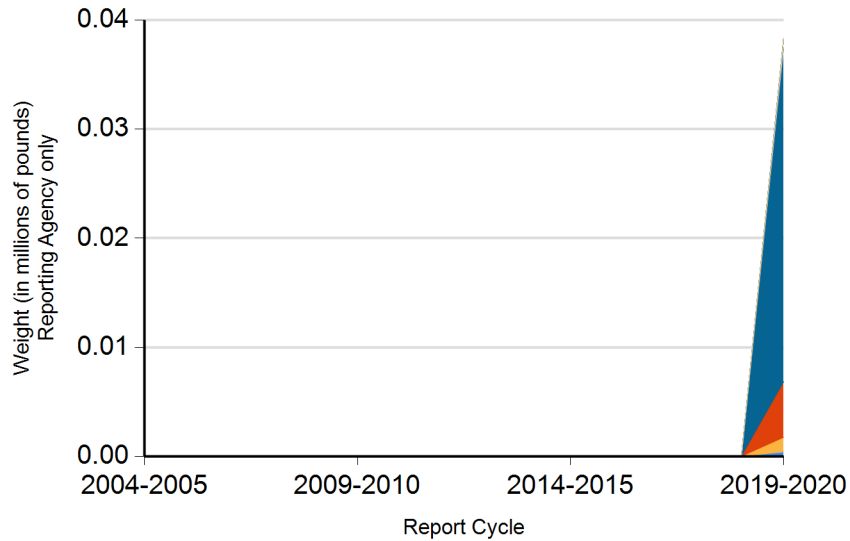




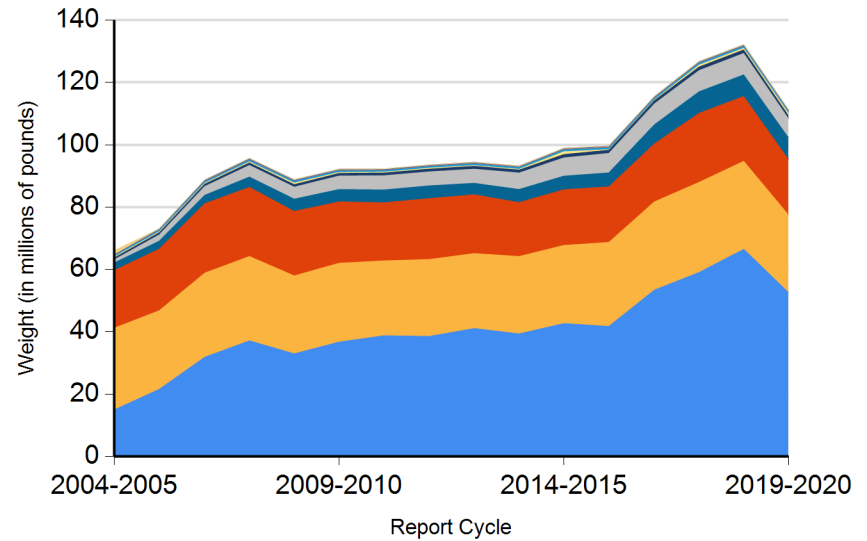
Form CalRecycle 303 Household Hazardous Waste Collection Information For 2019-2020

HHW Collection By Material Categories (City of Inglewood)



- |                         |                         |
|-------------------------|-------------------------|
| Aerosol Containers (UW) | Universal Waste (UW)*   |
| PCB-containing          | Other                   |
| Oxidizer                | Flammable and Poison    |
| Acid                    | Reclaimable             |
| Asbestos                | Electronic Devices (UW) |
| Base                    |                         |

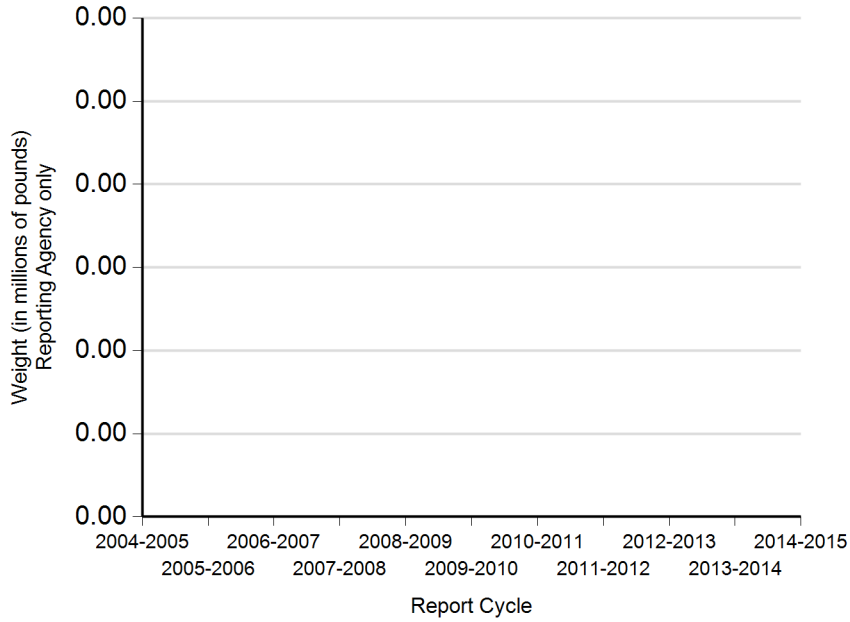
HHW Collection By Material Categories (Statewide)



- |                         |                         |
|-------------------------|-------------------------|
| Aerosol Containers (UW) | Universal Waste (UW)*   |
| PCB-containing          | Other                   |
| Oxidizer                | Flammable and Poison    |
| Acid                    | Reclaimable             |
| Asbestos                | Electronic Devices (UW) |
| Base                    |                         |

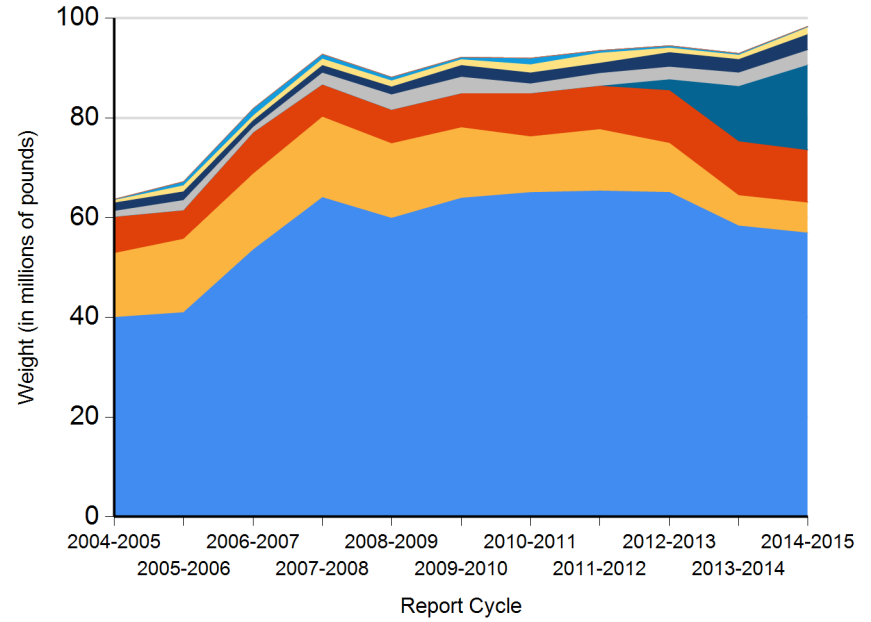


HHW Disposition By Disposition Method (City of Inglewood)



- TRC
- PaintCare
- Stabilization
- Neutralization / Treatment
- Reused
- Landfill
- Fuel Incineration
- Destructive Incineration
- Recycled

HHW Disposition By Disposition Method (Statewide)



- TRC
- Stabilization
- Neutralization / Treatment
- Reused
- Landfill
- PaintCare
- Destructive Incineration
- Fuel Incineration
- Recycled



# DEPARTMENT OF RESOURCES RECYCLING AND RECOVERY

1001 I STREET, SACRAMENTO, CALIFORNIA 95814 • www.CalRecycle.ca.gov • (916) 322-4027  
P.O. BOX 4025, SACRAMENTO, CALIFORNIA 95812

**Name of Public Agency Reporting:** City of Inglewood

**Contractor's Name:** Consolidated Disposal Service, A Republic Services Co.

**Participating Households:** 10                      **Method:** Number of Addresses

Participating Households includes non-residential (CESQG,schools,nonprofits,etc.): No

**Service Area Households:** 35,997

**Participants Represented by Reporting Jurisdiction/Agency (i.e., individual city(ies), county(ies), other agency(ies)):**

Inglewood

**Program Types:**

| Program Type     | EPAID        | Program Type     | EPAID        |
|------------------|--------------|------------------|--------------|
| Curbside Program | CAD982001323 | Curbside Program | CAD982001323 |



DEPARTMENT OF RESOURCES RECYCLING AND RECOVERY

1001 I STREET, SACRAMENTO, CALIFORNIA 95814 • www.CalRecycle.ca.gov • (916) 322-4027  
 P.O. BOX 4025, SACRAMENTO, CALIFORNIA 95812

| Collection (pounds)                  | Material Type  | Permanent Facility | Temporary (periodic) Facility | Mobile Facility | Recycle-only Facility | Door to Door (residential) Program | Curbside Program | Load Check | Other |
|--------------------------------------|--|--------------------|-------------------------------|-----------------|-----------------------|------------------------------------|------------------|------------|-------|
| <b>Flammable and Poison</b>          | Flammable solids / liquids   |                    |                               |                 |                       |                                    | 2,082            |            |       |
|                                      | Bulked flammable liquids   |                    |                               |                 |                       |                                    |                  |            |       |
|                                      | Oil-based paints   |                    |                               |                 |                       |                                    |                  |            |       |
|                                      | Paint Related Material (PRM)   |                    |                               |                 |                       |                                    |                  |            |       |
|                                      | Poisons  |                    |                               |                 |                       |                                    | 3,000            |            |       |
|                                      | Reactive and explosive   |                    |                               |                 |                       |                                    |                  |            |       |
|                                      | Compressed gas cylinders   |                    |                               |                 |                       |                                    |                  |            |       |
|                                      | 1 lb propane canister  |                    |                               |                 |                       |                                    | 25               |            |       |
| <b>Flammable and Poison subtotal</b> |  |                    |                               |                 |                       |                                    | <b>5,107</b>     |            |       |
| <b>PCB-containing</b>                | PCB-containing paint   |                    |                               |                 |                       |                                    |                  |            |       |
|                                      | Other PCB waste (includes ballasts)                                  |                    |                               |                 |                       |                                    |                  |            |       |
| <b>PCB-containing subtotal</b>       |  |                    |                               |                 |                       |                                    |                  |            |       |
| <b>Reclaimable</b>                   | Antifreeze   |                    |                               |                 |                       |                                    | 500              |            |       |
|                                      | Auto type batteries (motor vehicles)                                 |                    |                               |                 |                       |                                    |                  |            |       |
|                                      | Latex paint  |                    |                               |                 |                       |                                    | 835              |            |       |
|                                      | Motor oil/oil products   |                    |                               |                 |                       |                                    |                  |            |       |
|                                      | Used oil filters (recyclables only)                                  |                    |                               |                 |                       |                                    |                  |            |       |
| <b>Reclaimable subtotal</b>          |  |                    |                               |                 |                       |                                    | <b>1,335</b>     |            |       |
| <b>Acid</b>                          | Inorganic and organic acid   |                    |                               |                 |                       |                                    |                  |            |       |
| <b>Base</b>                          | Inorganic and organic base   |                    |                               |                 |                       |                                    |                  |            |       |
| <b>Oxidizer</b>                      | Neutral oxidizers, Organic peroxides, Oxidizing acid/base            |                    |                               |                 |                       |                                    |                  |            |       |
| <b>Asbestos</b>                      | Asbestos   |                    |                               |                 |                       |                                    |                  |            |       |
| <b>Universal Waste (UW)*</b>         | Mercury containing automatic switches / thermometers / and novelties |                    |                               |                 |                       |                                    | 150              |            |       |
|                                      | Mercury containing thermostats                                       |                    |                               |                 |                       |                                    |                  |            |       |
|                                      | Mercury containing waste (other)                                     |                    |                               |                 |                       |                                    |                  |            |       |
|                                      | Lamps  |                    |                               |                 |                       |                                    | 340              |            |       |
|                                      | Rechargeable batteries   |                    |                               |                 |                       |                                    | 20               |            |       |
|                                      | Other batteries  |                    |                               |                 |                       |                                    | 20               |            |       |
|                                      | Aerosol cans   |                    |                               |                 |                       |                                    | 320              |            |       |
| <b>Electronic Devices (UW)</b>       | Covered Electronic Devices   |                    |                               |                 |                       |                                    |                  |            |       |



DEPARTMENT OF RESOURCES RECYCLING AND RECOVERY

1001 I STREET, SACRAMENTO, CALIFORNIA 95814 • www.CalRecycle.ca.gov • (916) 322-4027  
 P.O. BOX 4025, SACRAMENTO, CALIFORNIA 95812

| Collection (pounds)     | Material Type   | Permanent Facility | Temporary (periodic) Facility | Mobile Facility | Recycle-only Facility | Door to Door (residential) Program | Curbside Program | Load Check | Other |
|-------------------------|---|--------------------|-------------------------------|-----------------|-----------------------|------------------------------------|------------------|------------|-------|
| Electronic Devices (UW) | Other Electronic Devices  |                    |                               |                 |                       |                                    | 408              |            |       |
|                         | <b>Electronic Devices (UW) subtotal</b>                         |                    |                               |                 |                       |                                    | <b>408</b>       |            |       |
|                         | <b>Universal Waste (UW)* + Electronic Devices (UW) subtotal</b> |                    |                               |                 |                       |                                    | <b>1,258</b>     |            |       |
| Other                   | Home-generated sharps waste                                     |                    |                               |                 |                       |                                    |                  |            |       |
|                         | Home-generated pharmaceutical waste                             |                    |                               |                 |                       |                                    | 30               |            |       |
|                         | Treated wood  |                    |                               |                 |                       |                                    |                  |            |       |
|                         | CLASS 9 NON RCRA LIQUIDS/SOLIDS                                 |                    |                               |                 |                       |                                    | 30,573           |            |       |
|                         | Other   |                    |                               |                 |                       |                                    |                  |            |       |
|                         | Reuse Total   |                    |                               |                 |                       |                                    | 40               |            |       |
|                         | <b>Other subtotal</b>   |                    |                               |                 |                       |                                    | <b>30,643</b>    |            |       |
|                         | <b>Grand Total</b>  |                    |                               |                 |                       |                                    | <b>38,343</b>    |            |       |



DEPARTMENT OF RESOURCES RECYCLING AND RECOVERY

1001 I STREET, SACRAMENTO, CALIFORNIA 95814 • www.CalRecycle.ca.gov • (916) 322-4027  
 P.O. BOX 4025, SACRAMENTO, CALIFORNIA 95812

| Disposition (pounds)           | Material Type  | Destructive Incineration | Fuel Incineration | Landfill | Neutralization / Treatment | Recycled     | Reused | Stabilization | Steward    |
|--------------------------------|--|--------------------------|-------------------|----------|----------------------------|--------------|--------|---------------|------------|
| <b>Flammable and Poison</b>    | Flammable solids / liquids   | 2,082                    |                   |          |                            |              |        |               |            |
|                                | Bulked flammable liquids   |                          |                   |          |                            |              |        |               |            |
|                                | Oil-based paints   |                          |                   |          |                            |              |        |               |            |
|                                | Paint Related Material (PRM)   |                          |                   |          |                            |              |        |               |            |
|                                | Poisons  |                          |                   |          |                            |              |        |               |            |
|                                | Reactive and explosive   | 3,000                    |                   |          |                            |              |        |               |            |
|                                | Compressed gas cylinders   |                          |                   |          |                            |              |        |               |            |
|                                | 1 lb propane canister  |                          |                   |          |                            |              |        |               |            |
|                                | <b>Flammable and Poison subtotal</b>                                 | <b>5,082</b>             |                   |          |                            |              |        |               |            |
| <b>PCB-containing</b>          | PCB-containing paint   |                          |                   |          |                            |              |        |               |            |
|                                | Other PCB waste (includes ballasts)                                  |                          |                   |          |                            |              |        |               |            |
|                                | <b>PCB-containing subtotal</b>                                       |                          |                   |          |                            |              |        |               |            |
| <b>Reclaimable</b>             | Antifreeze   | 500                      |                   |          |                            |              |        |               |            |
|                                | Auto type batteries (motor vehicles)                                 |                          |                   |          |                            |              |        |               |            |
|                                | Latex paint  |                          |                   |          |                            |              |        |               | 835        |
|                                | Motor oil/oil products   |                          |                   |          |                            |              |        |               |            |
|                                | Used oil filters (recyclables only)                                  |                          |                   |          |                            | 2,000        |        |               |            |
|                                | <b>Reclaimable subtotal</b>  | <b>500</b>               |                   |          |                            | <b>2,000</b> |        |               | <b>835</b> |
| <b>Acid</b>                    | Inorganic and organic acid   |                          |                   |          |                            |              |        |               |            |
| <b>Base</b>                    | Inorganic and organic base   |                          |                   |          |                            |              |        |               |            |
| <b>Oxidizer</b>                | Neutral oxidizers, Organic peroxides, Oxidizing acid/base            |                          |                   |          |                            |              |        |               |            |
| <b>Asbestos</b>                | Asbestos   |                          |                   |          |                            |              |        |               |            |
| <b>Universal Waste (UW)*</b>   | Mercury containing automatic switches / thermometers / and novelties |                          |                   |          | 150                        |              |        |               |            |
|                                | Mercury containing thermostats                                       |                          |                   |          |                            |              |        |               |            |
|                                | Mercury containing waste (other)                                     |                          |                   |          |                            |              |        |               |            |
|                                | Lamps  |                          |                   |          | 340                        |              |        |               |            |
|                                | Rechargeable batteries   |                          |                   |          |                            | 20           |        |               |            |
|                                | Other batteries  |                          |                   |          |                            | 20           |        |               |            |
|                                | Aerosol cans   |                          |                   |          | 320                        |              |        |               |            |
| <b>Electronic Devices (UW)</b> | Covered Electronic Devices   |                          |                   |          |                            |              |        |               |            |



DEPARTMENT OF RESOURCES RECYCLING AND RECOVERY

1001 I STREET, SACRAMENTO, CALIFORNIA 95814 • www.CalRecycle.ca.gov • (916) 322-4027  
 P.O. BOX 4025, SACRAMENTO, CALIFORNIA 95812

| Disposition (pounds)    | Material Type   | Destructive Incineration | Fuel Incineration | Landfill | Neutralization / Treatment | Recycled     | Reused | Stabilization | Steward    |
|-------------------------|---|--------------------------|-------------------|----------|----------------------------|--------------|--------|---------------|------------|
| Electronic Devices (UW) | Other Electronic Devices  |                          |                   |          |                            | 408          |        |               |            |
|                         | <b>Electronic Devices (UW) subtotal</b>                         |                          |                   |          |                            | <b>408</b>   |        |               |            |
|                         | <b>Universal Waste (UW)* + Electronic Devices (UW) subtotal</b> |                          |                   |          | <b>810</b>                 | <b>448</b>   |        |               |            |
| Other                   | Home-generated sharps waste                                     |                          |                   |          |                            |              |        |               |            |
|                         | Home-generated pharmaceutical waste                             |                          |                   |          |                            |              |        |               |            |
|                         | Treated wood  |                          |                   |          |                            |              |        |               |            |
|                         | CLASS 9 NON RCRA LIQUIDS/SOLIDS                                 | 30,573                   |                   |          |                            |              |        |               |            |
|                         | Other   |                          |                   |          |                            |              |        |               |            |
|                         | Reuse Total   |                          |                   |          |                            |              |        |               |            |
|                         | <b>Other subtotal</b>   | <b>30,573</b>            |                   |          |                            |              |        |               |            |
|                         | <b>Grand Total</b>  | <b>36,155</b>            |                   |          | <b>810</b>                 | <b>2,448</b> |        |               | <b>835</b> |