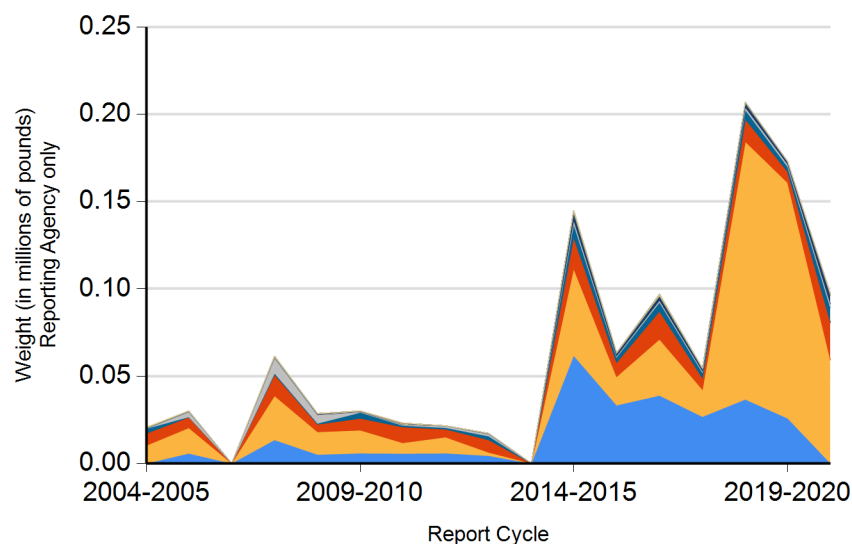




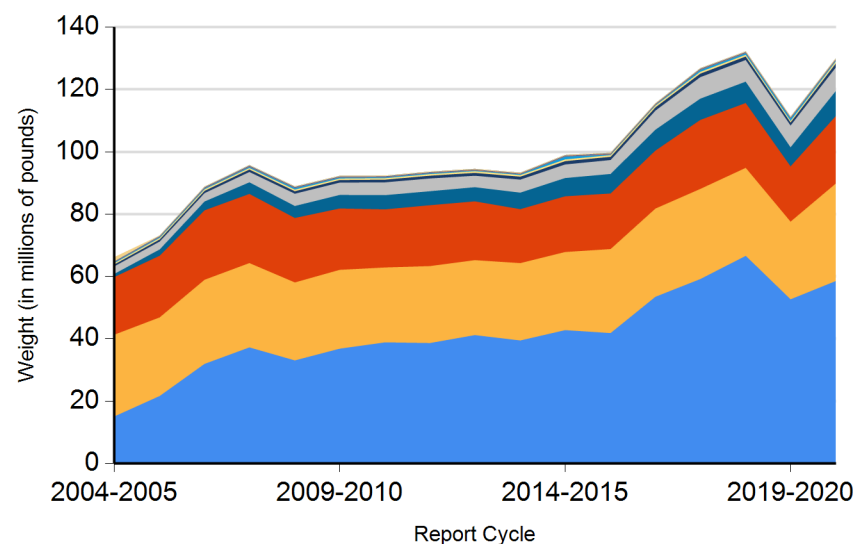
Form CalRecycle 303 Household Hazardous Waste Collection Information For 2020-2021

HHW Collection By Material Categories (City of Lake Forest)



Aerosol Containers (UW) Other  
PCB-containing Universal Waste (UW)\*  
Oxidizer Flammable and Poison  
Asbestos Reclaimable  
Acid Electronic Devices (UW)  
Base

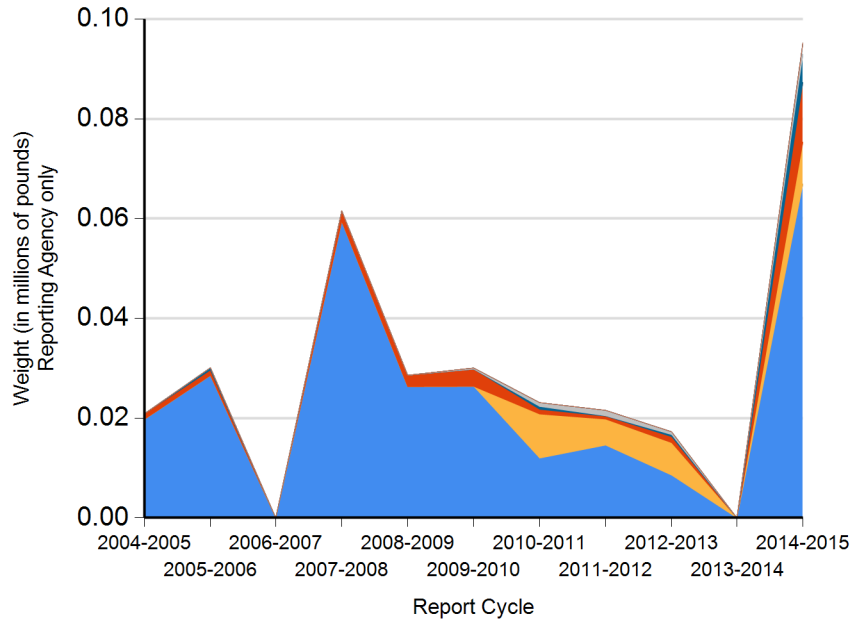
HHW Collection By Material Categories (Statewide)



Aerosol Containers (UW) Other  
PCB-containing Universal Waste (UW)\*  
Oxidizer Flammable and Poison  
Asbestos Reclaimable  
Acid Electronic Devices (UW)  
Base

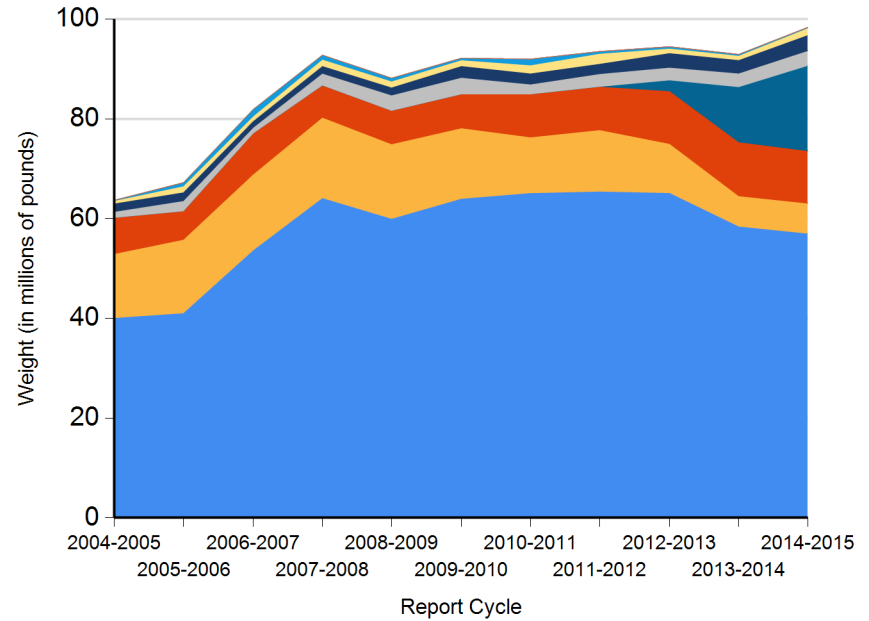


HHW Disposition By Disposition Method (City of Lake Forest)



TRC  
PaintCare  
Reused  
Stabilization  
Landfill  
Neutralization / Treatment  
Destructive Incineration  
Fuel Incineration  
Recycled

HHW Disposition By Disposition Method (Statewide)



TRC  
Stabilization  
Reused  
Landfill  
Neutralization / Treatment  
PaintCare  
Destructive Incineration  
Fuel Incineration  
Recycled



**Name of Public Agency Reporting:** City of Lake Forest

**Contractor's Name:** CR&R Inc.

**Participating Households:** 2,315      **Method:** Number of Addresses

Participating Households includes non-residential (CESQG,schools,nonprofits,etc.): No

**Service Area Households:** 30,567

**Participants Represented by Reporting Jurisdiction/Agency (i.e., individual city(ies), county(ies), other agency(ies)):**

Lake Forest

**Program Types:**

Program Type	EPAID	Program Type	EPAID	Program Type	EPAID
Temporary (periodic) Facility	CAH111000970	Door to Door (residential) Program	CAR000202937	Used Oil Drop-off Locations	CAD981692098



# DEPARTMENT OF RESOURCES RECYCLING AND RECOVERY

1001 I STREET, SACRAMENTO, CALIFORNIA 95814 • www.CalRecycle.ca.gov • (916) 322-4027  
P.O. BOX 4025, SACRAMENTO, CALIFORNIA 95812

Collection (pounds)	Material Type	Permanent Facility	Temporary (periodic) Facility	Mobile Facility	Recycle-only Facility	Door to Door (residential) Program	Curbside Program	Load Check	Other
Flammable and Poison	Flammable solids / liquids			10					
	Bulked flammable liquids								
	Oil-based paints			7,719					
	Paint Related Material (PRM)			6,950					
	Poisons			6,800					
	Reactive and explosive								
	Compressed gas cylinders								
	1 lb propane canister								
Flammable and Poison subtotal				21,479					
PCB-containing	PCB-containing paint								
	Other PCB waste (includes ballasts)								
PCB-containing subtotal									
Reclaimable	Antifreeze			1,400					
	Auto type batteries (motor vehicles)								
	Latex paint			35,878					
	Motor oil/oil products	15,345		3,600					
	Used oil filters (recyclables only)	2,569		400					
Reclaimable subtotal		17,914		41,278					
Acid	Inorganic and organic acid			750					
Base	Inorganic and organic base			5,070					
Oxidizer	Neutral oxidizers, Organic peroxides, Oxidizing acid/base			130					
Asbestos	Asbestos								
Universal Waste (UW)*	Mercury containing automatic switches / thermometers / and novelties			20					
	Mercury containing thermostats								
	Mercury containing waste (other)								
	Lamps			1,160					
	Photovoltaic Modules								
	Other batteries			4,300					
	Aerosol cans			2,230					
	Rechargeable batteries			720					



# DEPARTMENT OF RESOURCES RECYCLING AND RECOVERY

1001 I STREET, SACRAMENTO, CALIFORNIA 95814 • www.CalRecycle.ca.gov • (916) 322-4027  
P.O. BOX 4025, SACRAMENTO, CALIFORNIA 95812

Collection (pounds)	Material Type	Permanent Facility	Temporary (periodic) Facility	Mobile Facility	Recycle-only Facility	Door to Door (residential) Program	Curbside Program	Load Check	Other
Electronic Devices (UW)	Covered Electronic Devices								
	Other Electronic Devices								
	Electronic Devices (UW) subtotal								
	Universal Waste (UW)* + Electronic Devices (UW) subtotal				8,430				
Other	Home-generated sharps waste								
	Home-generated pharmaceutical waste								
	Treated wood								
	Fire Extinguisher and/or expelled fire extinguisher waste			30					
	NON RCRA HAZARDOUS WASTE SOLID (Plaster Grout)			1,300					
	Non-RCRA Labpack/Loosepack			800					
	Other								
	Reuse Total								
Other subtotal				2,130					
Grand Total		17,914		79,267					



# DEPARTMENT OF RESOURCES RECYCLING AND RECOVERY

1001 I STREET, SACRAMENTO, CALIFORNIA 95814 • www.CalRecycle.ca.gov • (916) 322-4027  
P.O. BOX 4025, SACRAMENTO, CALIFORNIA 95812

Disposition (pounds)	Material Type	Destructive Incineration	Fuel Incineration	Landfill	Neutralization / Treatment	Recycled	Reused	Stabilization	Steward
Flammable and Poison	Flammable solids / liquids	10							
	Bulked flammable liquids								
	Oil-based paints								7,719
	Paint Related Material (PRM)		6,950						
	Poisons	6,800							
	Reactive and explosive								
	Compressed gas cylinders								
	1 lb propane canister								
	<b>Flammable and Poison subtotal</b>	<b>6,810</b>	<b>6,950</b>						<b>7,719</b>
PCB-containing	PCB-containing paint								
	Other PCB waste (includes ballasts)								
	<b>PCB-containing subtotal</b>								
Reclaimable	Antifreeze					1,400			
	Auto type batteries (motor vehicles)								
	Latex paint								35,878
	Motor oil/oil products					18,945			
	Used oil filters (recyclables only)					2,969			
	<b>Reclaimable subtotal</b>					<b>23,314</b>			<b>35,878</b>
Acid	Inorganic and organic acid				750				
Base	Inorganic and organic base				5,070				
Oxidizer	Neutral oxidizers, Organic peroxides, Oxidizing acid/base	120			10				
Asbestos	Asbestos								
Universal Waste (UW)*	Mercury containing automatic switches / thermometers / and novelties					20			
	Mercury containing thermostats								
	Mercury containing waste (other)								
	Lamps					1,160			
	Photovoltaic Modules								
	Other batteries					4,300			
	Aerosol cans	2,230							
	Rechargeable batteries	320				400			



DEPARTMENT OF RESOURCES RECYCLING AND RECOVERY

1001 I STREET, SACRAMENTO, CALIFORNIA 95814 • www.CalRecycle.ca.gov • (916) 322-4027  
P.O. BOX 4025, SACRAMENTO, CALIFORNIA 95812

Disposition (pounds)	Material Type	Destructive Incineration	Fuel Incineration	Landfill	Neutralization / Treatment	Recycled	Reused	Stabilization	Steward
Electronic Devices (UW)	Covered Electronic Devices								
	Other Electronic Devices								
	Electronic Devices (UW) subtotal								
	Universal Waste (UW)* + Electronic Devices (UW) subtotal	2,550				5,880			
Other	Home-generated sharps waste								
	Home-generated pharmaceutical waste								
	Treated wood								
	Fire Extinguisher and/or expelled fire extinguisher waste					30			
	NON RCRA HAZARDOUS WASTE SOLID (Plaster Grout)			1,300					
	Non-RCRA Labpack/Loosepack			800					
	Other								
	Reuse Total								
Other subtotal				2,100		30			
Grand Total		9,480	6,950	2,100	5,830	29,224			43,597