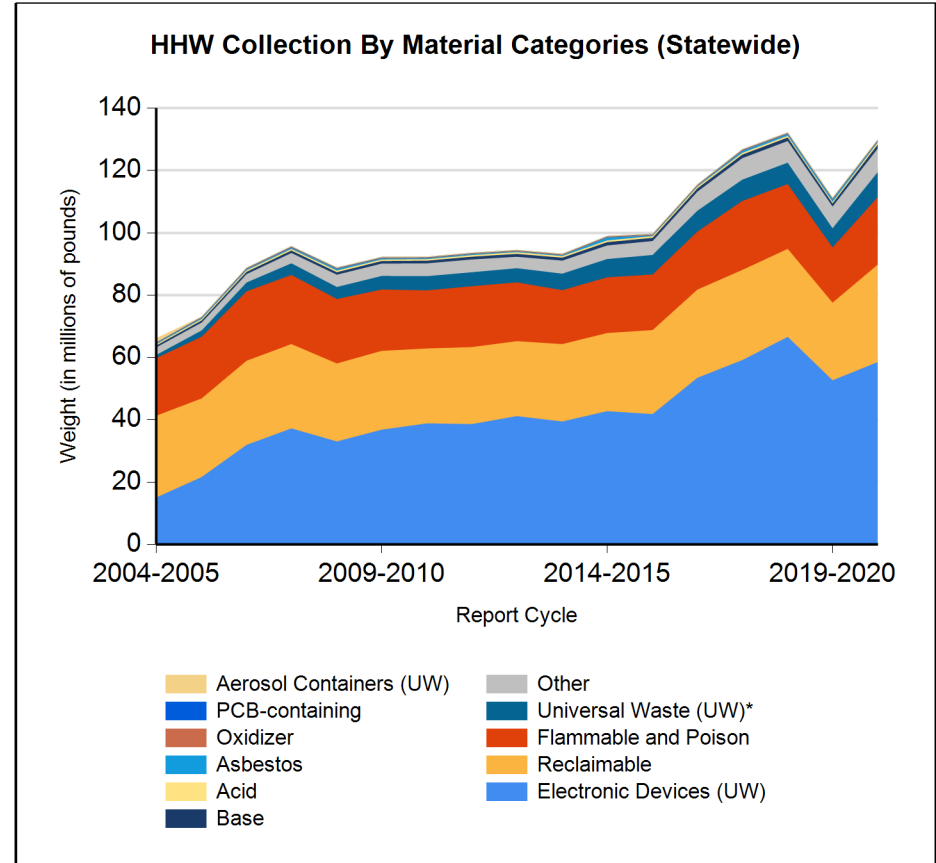
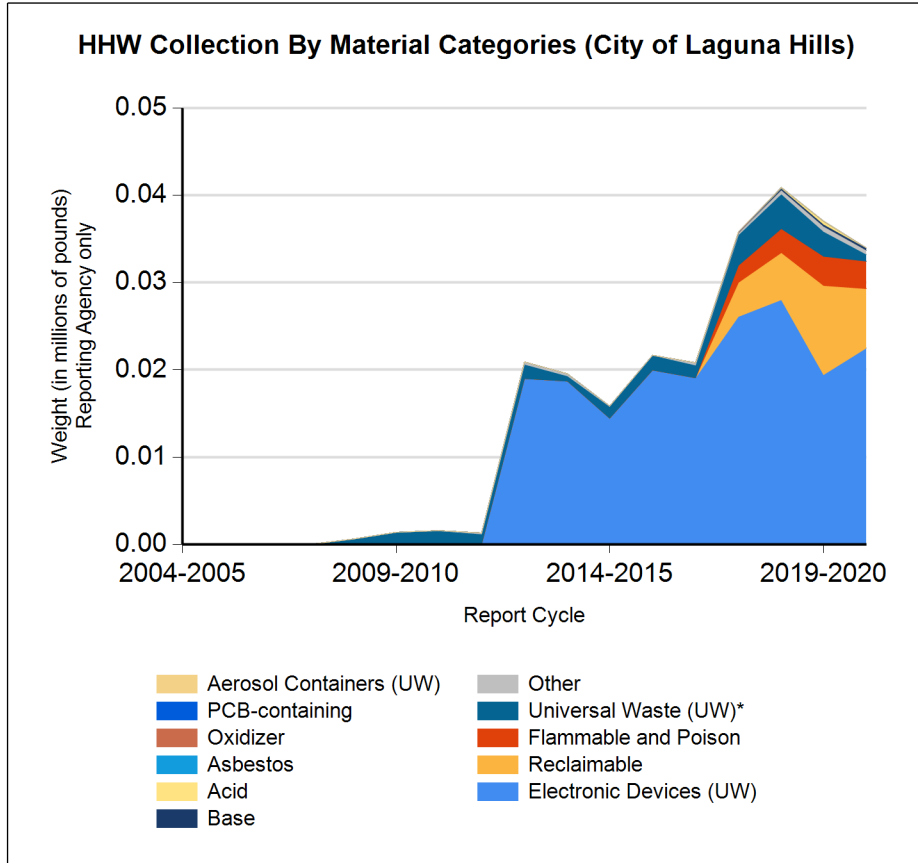


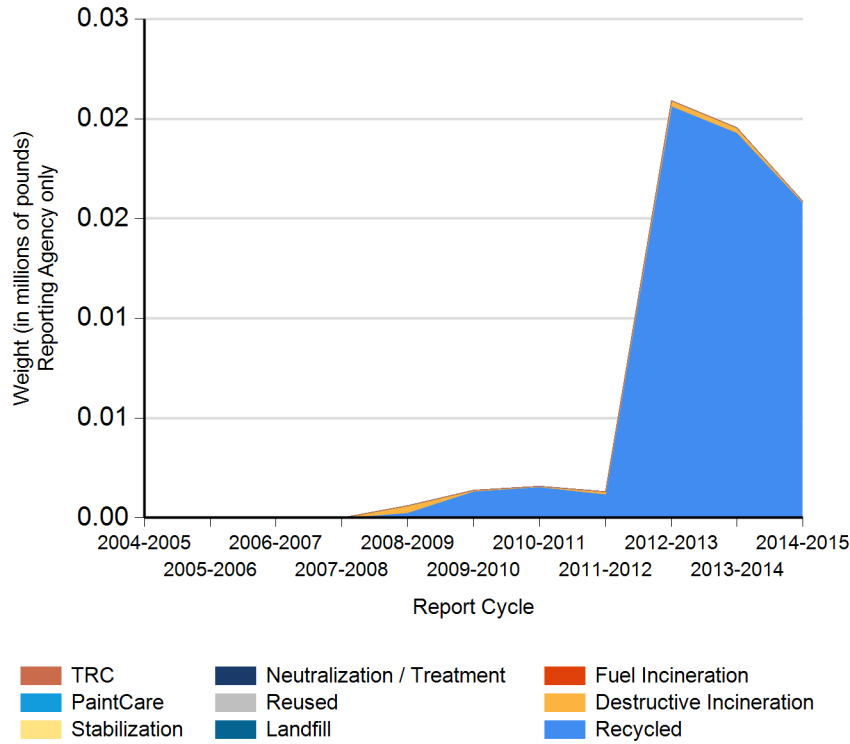


Form CalRecycle 303 Household Hazardous Waste Collection Information For 2020-2021

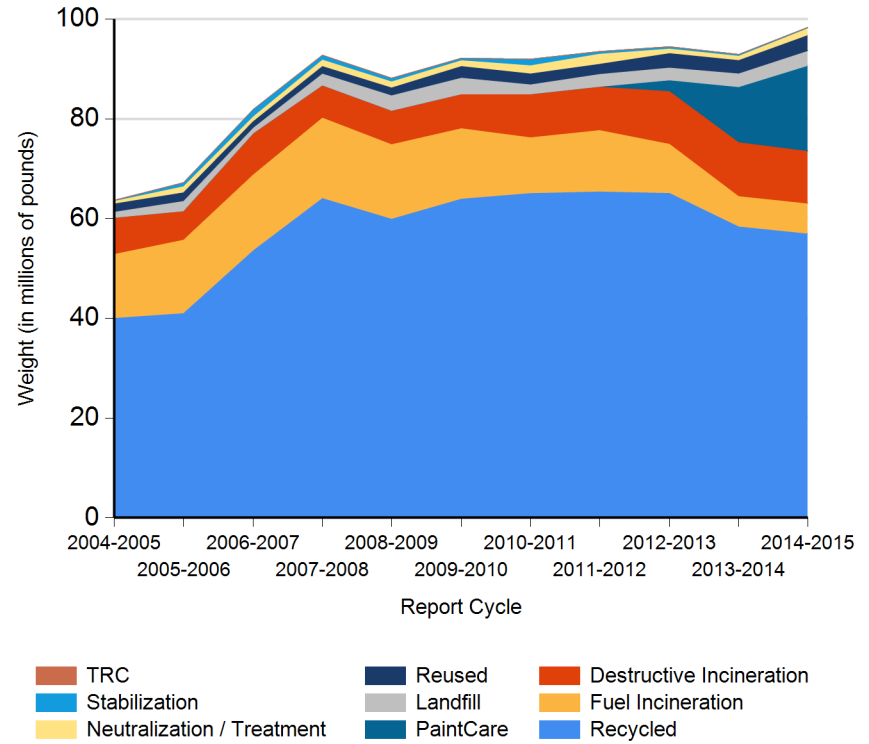




HHW Disposition By Disposition Method (City of Laguna Hills)



HHW Disposition By Disposition Method (Statewide)





DEPARTMENT OF RESOURCES RECYCLING AND RECOVERY

1001 I STREET, SACRAMENTO, CALIFORNIA 95814 • www.CalRecycle.ca.gov • (916) 322-4027
P.O. BOX 4025, SACRAMENTO, CALIFORNIA 95812

Name of Public Agency Reporting: City of Laguna Hills

Contractor's Name: CR&R, Inc., Sharps Compliance, and Mercury Disposal Systems

Participating Households: 235 **Method:** Number of Vehicles

Participating Households includes non-residential (CESQG,schools,nonprofits,etc.): No

Service Area Households: 11,302

Participants Represented by Reporting Jurisdiction/Agency (i.e., individual city(ies), county(ies), other agency(ies)):

Laguna Hills

Program Types:

Program Type	EPAID	Program Type	EPAID	Program Type	EPAID	Program Type	EPAID
Curbside Program	CAR000202937	National Prescription Drug Take Back Day		MDS Battery and CFL Collection	CAL000373650	Sharp Drop-off Program	



DEPARTMENT OF RESOURCES RECYCLING AND RECOVERY

1001 I STREET, SACRAMENTO, CALIFORNIA 95814 • www.CalRecycle.ca.gov • (916) 322-4027
P.O. BOX 4025, SACRAMENTO, CALIFORNIA 95812

Collection (pounds)	Material Type	Permanent Facility	Temporary (periodic) Facility	Mobile Facility	Recycle-only Facility	Door to Door (residential) Program	Curbside Program	Load Check	Other
Flammable and Poison	Flammable solids / liquids								
	Bulked flammable liquids								
	Oil-based paints								
	Paint Related Material (PRM)					2,300			
	Poisons					850			
	Reactive and explosive								
	Compressed gas cylinders								
	1 lb propane canister								
Flammable and Poison subtotal						3,150			
PCB-containing	PCB-containing paint								
	Other PCB waste (includes ballasts)								
PCB-containing subtotal									
Reclaimable	Antifreeze					200			
	Auto type batteries (motor vehicles)								
	Latex paint					6,400			
	Motor oil/oil products					200			
	Used oil filters (recyclables only)								
Reclaimable subtotal						6,800			
Acid	Inorganic and organic acid					10			
Base	Inorganic and organic base					250			
Oxidizer	Neutral oxidizers, Organic peroxides, Oxidizing acid/base					10			
Asbestos	Asbestos								
Universal Waste (UW)*	Mercury containing automatic switches / thermometers / and novelties								
	Mercury containing thermostats								
	Mercury containing waste (other)								
	Lamps					30			188
	Photovoltaic Modules								
	Other batteries					160			250
	Aerosol cans					150			
	Rechargeable batteries								



DEPARTMENT OF RESOURCES RECYCLING AND RECOVERY

1001 I STREET, SACRAMENTO, CALIFORNIA 95814 • www.CalRecycle.ca.gov • (916) 322-4027
P.O. BOX 4025, SACRAMENTO, CALIFORNIA 95812

Collection (pounds)	Material Type	Permanent Facility	Temporary (periodic) Facility	Mobile Facility	Recycle-only Facility	Door to Door (residential) Program	Curbside Program	Load Check	Other
Electronic Devices (UW)	Covered Electronic Devices					17,316			
	Other Electronic Devices					5,194			
	Electronic Devices (UW) subtotal					22,510			
	Universal Waste (UW)* + Electronic Devices (UW) subtotal					22,850			438
Other	Home-generated sharps waste					125			
	Home-generated pharmaceutical waste								
	Treated wood								
	Fire Extinguisher and/or expelled fire extinguisher					100			
	Other								
	Unspecified					250			
	Reuse Total								
	Other subtotal					475			
	Grand Total					33,545			438



DEPARTMENT OF RESOURCES RECYCLING AND RECOVERY

1001 I STREET, SACRAMENTO, CALIFORNIA 95814 • www.CalRecycle.ca.gov • (916) 322-4027
P.O. BOX 4025, SACRAMENTO, CALIFORNIA 95812

Disposition (pounds)	Material Type	Destructive Incineration	Fuel Incineration	Landfill	Neutralization / Treatment	Recycled	Reused	Stabilization	Steward
Flammable and Poison	Flammable solids / liquids								
	Bulked flammable liquids								
	Oil-based paints								
	Paint Related Material (PRM)		2,300						
	Poisons	850							
	Reactive and explosive								
	Compressed gas cylinders								
	1 lb propane canister								
	Flammable and Poison subtotal	850	2,300						
PCB-containing	PCB-containing paint								
	Other PCB waste (includes ballasts)								
	PCB-containing subtotal								
Reclaimable	Antifreeze					200			
	Auto type batteries (motor vehicles)								
	Latex paint					6,400			
	Motor oil/oil products					200			
	Used oil filters (recyclables only)								
	Reclaimable subtotal					6,800			
Acid	Inorganic and organic acid				10				
Base	Inorganic and organic base				250				
Oxidizer	Neutral oxidizers, Organic peroxides, Oxidizing acid/base	10							
Asbestos	Asbestos								
Universal Waste (UW)*	Mercury containing automatic switches / thermometers / and novelties								
	Mercury containing thermostats								
	Mercury containing waste (other)								
	Lamps					218			
	Photovoltaic Modules								
	Other batteries					410			
	Aerosol cans	150							
	Rechargeable batteries								



DEPARTMENT OF RESOURCES RECYCLING AND RECOVERY

1001 I STREET, SACRAMENTO, CALIFORNIA 95814 • www.CalRecycle.ca.gov • (916) 322-4027
P.O. BOX 4025, SACRAMENTO, CALIFORNIA 95812

Disposition (pounds)	Material Type	Destructive Incineration	Fuel Incineration	Landfill	Neutralization / Treatment	Recycled	Reused	Stabilization	Steward
Electronic Devices (UW)	Covered Electronic Devices					17,316			
	Other Electronic Devices					5,194			
	Electronic Devices (UW) subtotal					22,510			
	Universal Waste (UW)* + Electronic Devices (UW) subtotal	150				23,138			
Other	Home-generated sharps waste	125							
	Home-generated pharmaceutical waste								
	Treated wood								
	Fire Extinguisher and/or expelled fire extinguisher					100			
	Other								
	Unspecified			250					
	Reuse Total								
	Other subtotal	125		250		100			
	Grand Total	1,135	2,300	250	260	30,038			