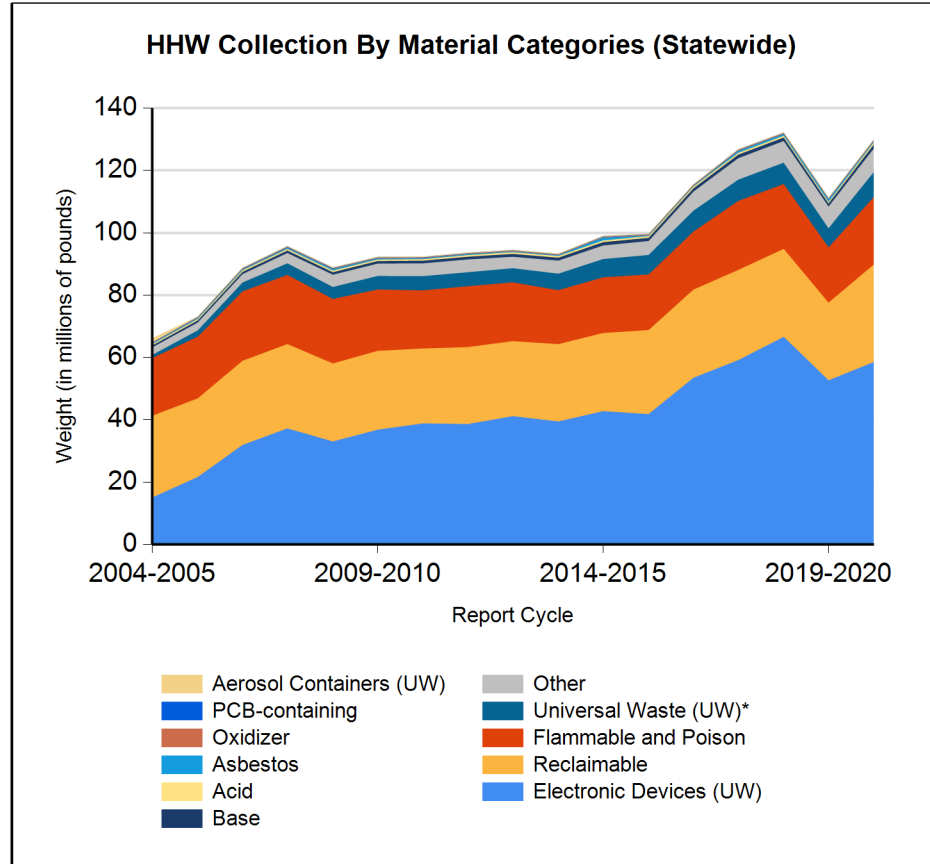
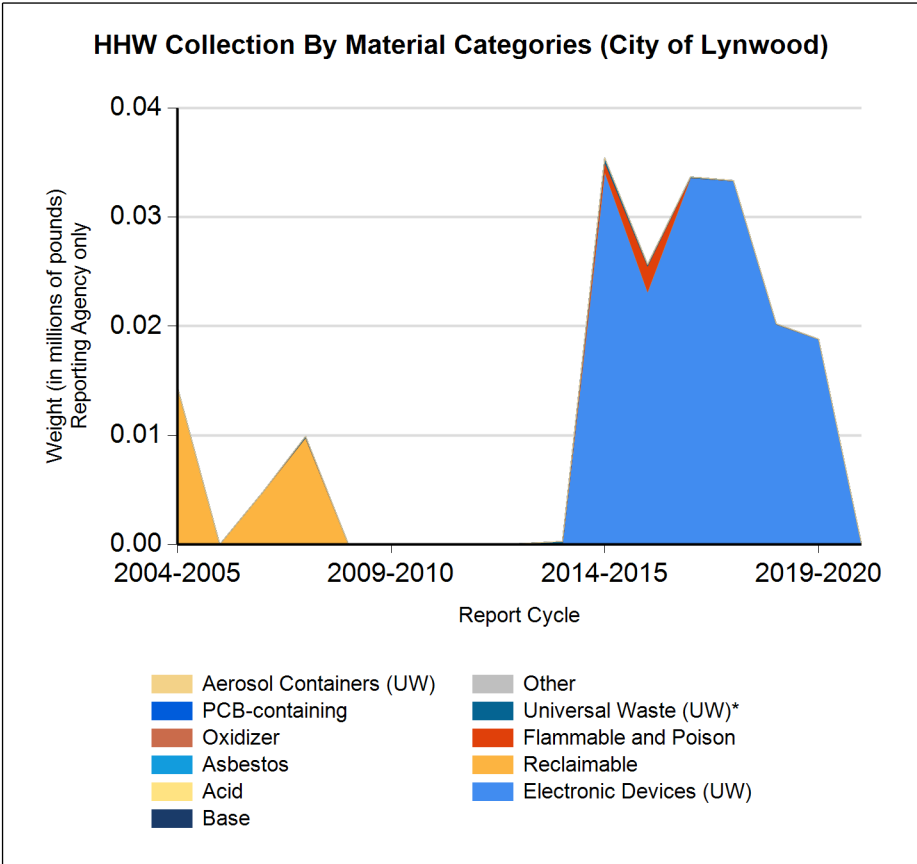


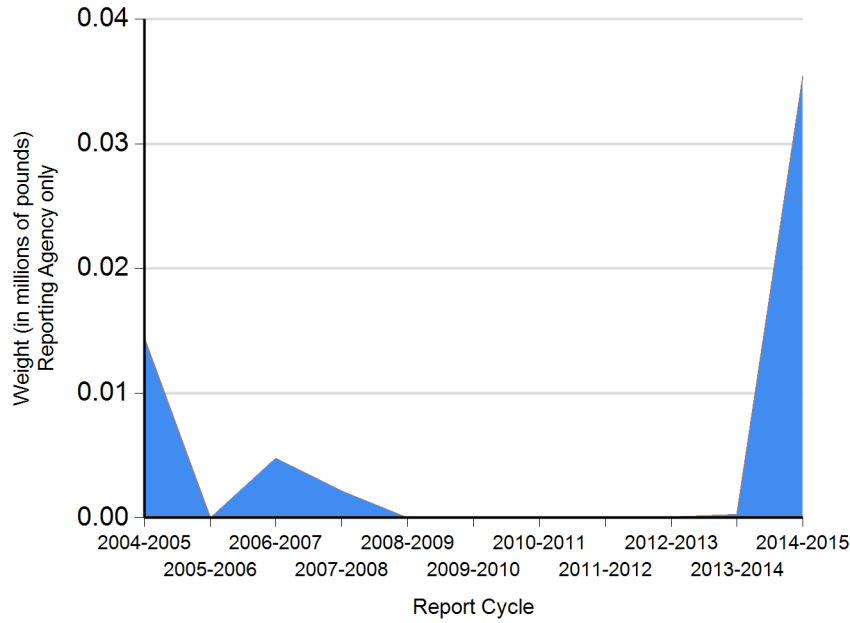


Form CalRecycle 303 Household Hazardous Waste Collection Information For 2020-2021



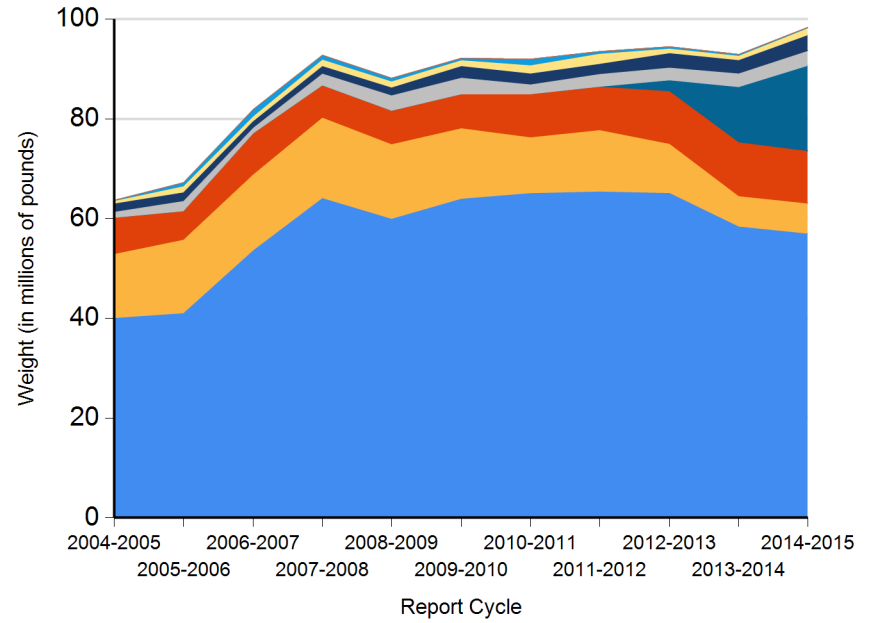


HHW Disposition By Disposition Method (City of Lynwood)



- TRC
- Reused
- Destructive Incineration
- PaintCare
- Landfill
- Neutralization / Treatment
- Stabilization
- Fuel Incineration
- Recycled

HHW Disposition By Disposition Method (Statewide)



- TRC
- Reused
- Destructive Incineration
- Stabilization
- Landfill
- Fuel Incineration
- Neutralization / Treatment
- PaintCare
- Recycled



DEPARTMENT OF RESOURCES RECYCLING AND RECOVERY

1001 I STREET, SACRAMENTO, CALIFORNIA 95814 • www.CalRecycle.ca.gov • (916) 322-4027
P.O. BOX 4025, SACRAMENTO, CALIFORNIA 95812

Name of Public Agency Reporting: City of Lynwood

Contractor's Name: Waste Resources, Inc.

Participating Households: 15,535 **Method:** Number of Addresses

Participating Households includes non-residential (CESQG,schools,nonprofits,etc.): No

Service Area Households: 15,535

Participants Represented by Reporting Jurisdiction/Agency (i.e., individual city(ies), county(ies), other agency(ies)):

Lynwood

Program Types:

Program Type	EPAID	Program Type	EPAID	Program Type	EPAID	Program Type	EPAID
Battery Buckets at City Facilities	CAL000264821	One Day Collection Events	CAL000358089	Sharp Kits Collection	CAL000264821	Residential Call-Ins	CAL000264821



DEPARTMENT OF RESOURCES RECYCLING AND RECOVERY

1001 I STREET, SACRAMENTO, CALIFORNIA 95814 • www.CalRecycle.ca.gov • (916) 322-4027
 P.O. BOX 4025, SACRAMENTO, CALIFORNIA 95812

Collection (pounds)	Material Type	Permanent Facility	Temporary (periodic) Facility	Mobile Facility	Recycle-only Facility	Door to Door (residential) Program	Curbside Program	Load Check	Other
Flammable and Poison	Flammable solids / liquids								
	Bulked flammable liquids								
	Oil-based paints								
	Paint Related Material (PRM)								
	Poisons								
	Reactive and explosive								
	Compressed gas cylinders								
	1 lb propane canister								
	Flammable and Poison subtotal								
PCB-containing	PCB-containing paint								
	Other PCB waste (includes ballasts)								
	PCB-containing subtotal								
Reclaimable	Antifreeze								
	Auto type batteries (motor vehicles)								
	Latex paint								
	Motor oil/oil products								
	Used oil filters (recyclables only)								
	Reclaimable subtotal								
Acid	Inorganic and organic acid								
Base	Inorganic and organic base								
Oxidizer	Neutral oxidizers, Organic peroxides, Oxidizing acid/base								
Asbestos	Asbestos								
Universal Waste (UW)*	Mercury containing automatic switches / thermometers / and novelties								
	Mercury containing thermostats								
	Mercury containing waste (other)								
	Lamps								
	Photovoltaic Modules								
	Other batteries								
	Aerosol cans								
	Rechargeable batteries								



DEPARTMENT OF RESOURCES RECYCLING AND RECOVERY

1001 I STREET, SACRAMENTO, CALIFORNIA 95814 • www.CalRecycle.ca.gov • (916) 322-4027
 P.O. BOX 4025, SACRAMENTO, CALIFORNIA 95812

Collection (pounds)	Material Type	Permanent Facility	Temporary (periodic) Facility	Mobile Facility	Recycle-only Facility	Door to Door (residential) Program	Curbside Program	Load Check	Other	
Electronic Devices (UW)	Covered Electronic Devices					12				
	Other Electronic Devices									
	Electronic Devices (UW) subtotal						12			
	Universal Waste (UW)* + Electronic Devices (UW) subtotal						12			
Other	Home-generated sharps waste					21				
	Home-generated pharmaceutical waste									
	Treated wood									
	Other									
	Reuse Total									
Other subtotal						21				
Grand Total						33				



DEPARTMENT OF RESOURCES RECYCLING AND RECOVERY

1001 I STREET, SACRAMENTO, CALIFORNIA 95814 • www.CalRecycle.ca.gov • (916) 322-4027
 P.O. BOX 4025, SACRAMENTO, CALIFORNIA 95812

Disposition (pounds)	Material Type	Destructive Incineration	Fuel Incineration	Landfill	Neutralization / Treatment	Recycled	Reused	Stabilization	Steward
Flammable and Poison	Flammable solids / liquids								
	Bulked flammable liquids								
	Oil-based paints								
	Paint Related Material (PRM)								
	Poisons								
	Reactive and explosive								
	Compressed gas cylinders								
	1 lb propane canister								
	Flammable and Poison subtotal								
PCB-containing	PCB-containing paint								
	Other PCB waste (includes ballasts)								
	PCB-containing subtotal								
Reclaimable	Antifreeze								
	Auto type batteries (motor vehicles)								
	Latex paint								
	Motor oil/oil products								
	Used oil filters (recyclables only)								
	Reclaimable subtotal								
Acid	Inorganic and organic acid								
Base	Inorganic and organic base								
Oxidizer	Neutral oxidizers, Organic peroxides, Oxidizing acid/base								
Asbestos	Asbestos								
Universal Waste (UW)*	Mercury containing automatic switches / thermometers / and novelties								
	Mercury containing thermostats								
	Mercury containing waste (other)								
	Lamps								
	Photovoltaic Modules								
	Other batteries								
	Aerosol cans								
	Rechargeable batteries								



DEPARTMENT OF RESOURCES RECYCLING AND RECOVERY

1001 I STREET, SACRAMENTO, CALIFORNIA 95814 • www.CalRecycle.ca.gov • (916) 322-4027
 P.O. BOX 4025, SACRAMENTO, CALIFORNIA 95812

Disposition (pounds)	Material Type	Destructive Incineration	Fuel Incineration	Landfill	Neutralization / Treatment	Recycled	Reused	Stabilization	Steward
Electronic Devices (UW)	Covered Electronic Devices					12			
	Other Electronic Devices								
	Electronic Devices (UW) subtotal					12			
	Universal Waste (UW)* + Electronic Devices (UW) subtotal					12			
Other	Home-generated sharps waste	21							
	Home-generated pharmaceutical waste								
	Treated wood								
	Other								
	Reuse Total								
	Other subtotal	21							
	Grand Total	21				12			