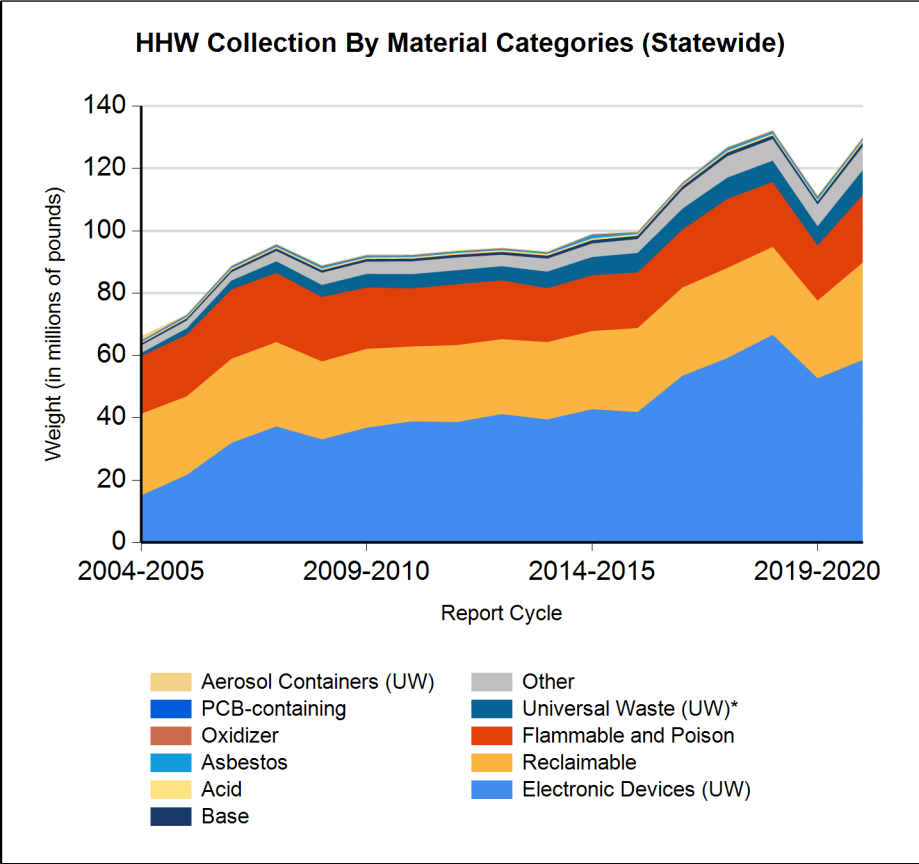
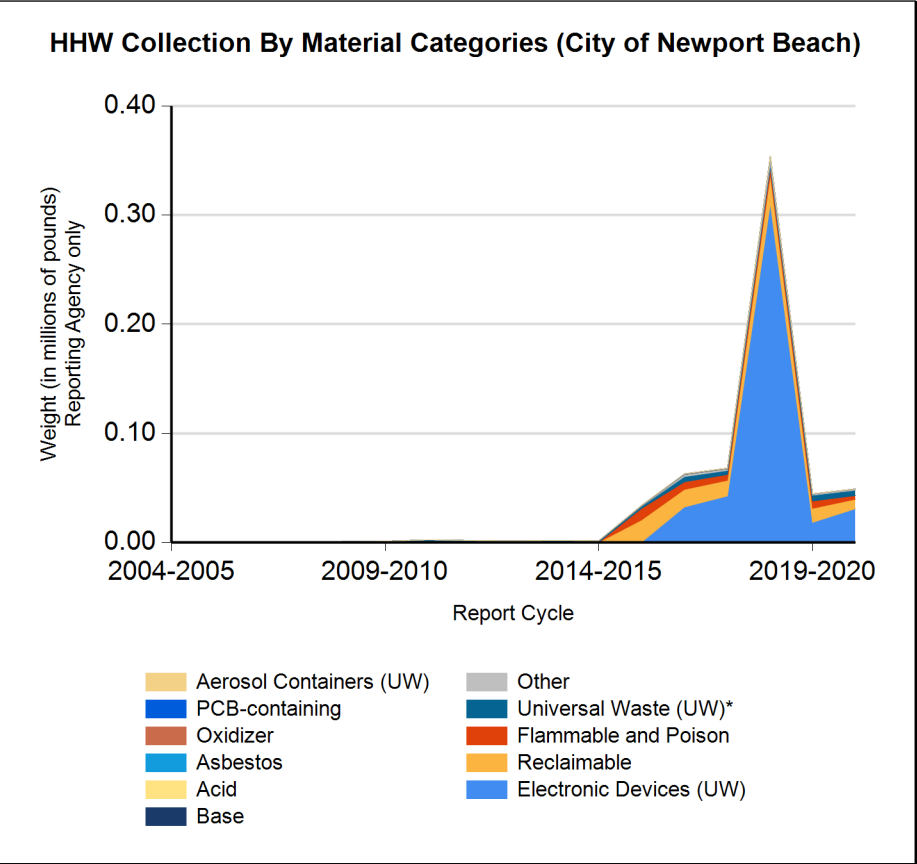


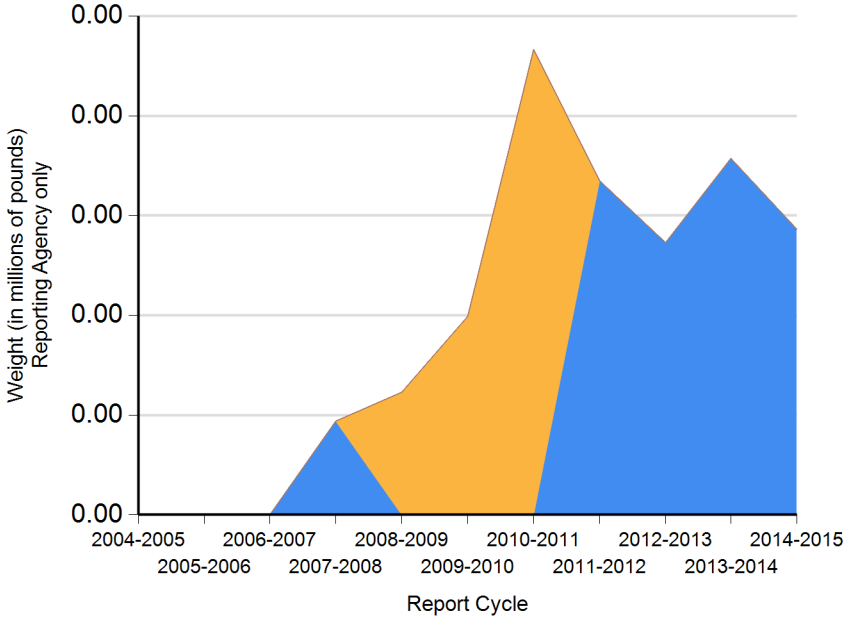


Form CalRecycle 303 Household Hazardous Waste Collection Information For 2020-2021

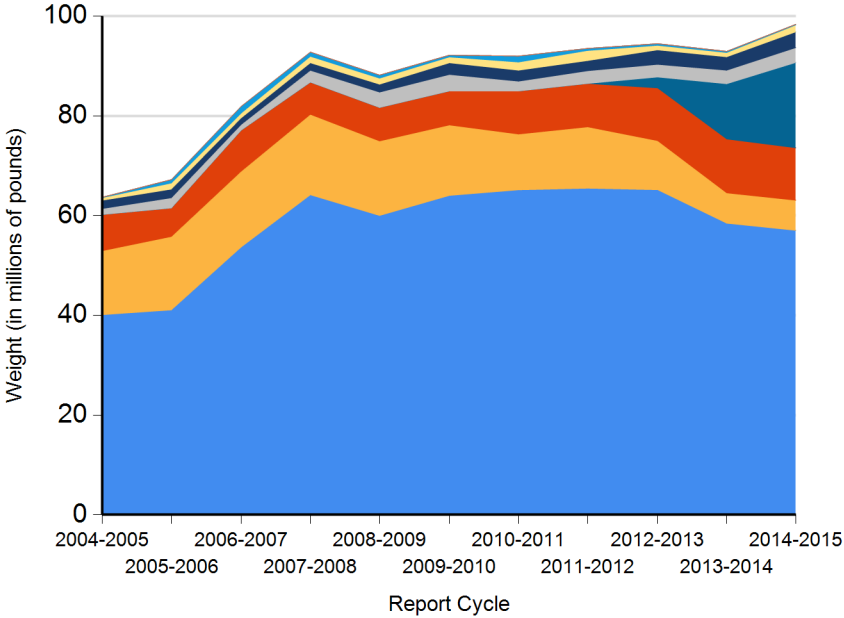




HHW Disposition By Disposition Method (City of Newport Beach)



HHW Disposition By Disposition Method (Statewide)





Name of Public Agency Reporting: City of Newport Beach

Contractor's Name: CR&R

Participating Households: 22,805 **Method:** Number of Addresses

Participating Households includes non-residential (CESQG,schools,nonprofits,etc.): No

Service Area Households: 39,480

Participants Represented by Reporting Jurisdiction/Agency (i.e., individual city(ies), county(ies), other agency(ies)):

Newport Beach

Program Types:

Program Type	EPAID	Program Type	EPAID	Program Type	EPAID	Program Type	EPAID
Temporary (periodic) Facility	CAD981973431	Door to Door (residential) Program	CAR000202937	National Prescription Drug Take Back Day	CAD981972953	Used Oil Drop-off Locations	CAD981692098
City Operations Collection (949 W. 16th St) of HHW from Public Right of way	CAL920685592	City Operations Collection (592 Superior) of HHW from Public Right of way	CAD981973431				



DEPARTMENT OF RESOURCES RECYCLING AND RECOVERY

1001 I STREET, SACRAMENTO, CALIFORNIA 95814 • www.CalRecycle.ca.gov • (916) 322-4027
P.O. BOX 4025, SACRAMENTO, CALIFORNIA 95812

Collection (pounds)	Material Type	Permanent Facility	Temporary (periodic) Facility	Mobile Facility	Recycle-only Facility	Door to Door (residential) Program	Curbside Program	Load Check	Other
Flammable and Poison	Flammable solids / liquids								
	Bulked flammable liquids								
	Oil-based paints					500			
	Paint Related Material (PRM)					2,400			
	Poisons					450			
	Reactive and explosive								
	Compressed gas cylinders					40			
	1 lb propane canister								
Flammable and Poison subtotal						3,390			
PCB-containing	PCB-containing paint								
	Other PCB waste (includes ballasts)								
PCB-containing subtotal									
Reclaimable	Antifreeze					200			
	Auto type batteries (motor vehicles)								
	Latex paint					8,500			
	Motor oil/oil products								
	Used oil filters (recyclables only)								
Reclaimable subtotal						8,700			
Acid	Inorganic and organic acid					100			
Base	Inorganic and organic base					100			
Oxidizer	Neutral oxidizers, Organic peroxides, Oxidizing acid/base								
Asbestos	Asbestos								
Universal Waste (UW)*	Mercury containing automatic switches / thermometers / and novelties								
	Mercury containing thermostats								
	Mercury containing waste (other)								
	Lamps					330			
	Photovoltaic Modules								
	Other batteries					3,870			
	Aerosol cans					500			
	Rechargeable batteries					200			



DEPARTMENT OF RESOURCES RECYCLING AND RECOVERY

1001 I STREET, SACRAMENTO, CALIFORNIA 95814 • www.CalRecycle.ca.gov • (916) 322-4027
P.O. BOX 4025, SACRAMENTO, CALIFORNIA 95812

Collection (pounds)	Material Type	Permanent Facility	Temporary (periodic) Facility	Mobile Facility	Recycle-only Facility	Door to Door (residential) Program	Curbside Program	Load Check	Other
Electronic Devices (UW)	Covered Electronic Devices					23,700			
	Other Electronic Devices					7,110			
	Electronic Devices (UW) subtotal	30,810							
	Universal Waste (UW)* + Electronic Devices (UW) subtotal	35,710							
Other	Home-generated sharps waste					780			
	Home-generated pharmaceutical waste								
	Treated wood								
	non-RCRA Liquids					250			
	Other								
	Reuse Total								
Other subtotal		1,030							
Grand Total		49,030							



DEPARTMENT OF RESOURCES RECYCLING AND RECOVERY

1001 I STREET, SACRAMENTO, CALIFORNIA 95814 • www.CalRecycle.ca.gov • (916) 322-4027
P.O. BOX 4025, SACRAMENTO, CALIFORNIA 95812

Disposition (pounds)	Material Type	Destructive Incineration	Fuel Incineration	Landfill	Neutralization / Treatment	Recycled	Reused	Stabilization	Steward
Flammable and Poison	Flammable solids / liquids								
	Bulked flammable liquids								
	Oil-based paints		500						
	Paint Related Material (PRM)		2,400						
	Poisons	450							
	Reactive and explosive								
	Compressed gas cylinders					40			
	1 lb propane canister								
	Flammable and Poison subtotal	450	2,900			40			
PCB-containing	PCB-containing paint								
	Other PCB waste (includes ballasts)								
	PCB-containing subtotal								
Reclaimable	Antifreeze					200			
	Auto type batteries (motor vehicles)								
	Latex paint					8,500			
	Motor oil/oil products								
	Used oil filters (recyclables only)								
	Reclaimable subtotal					8,700			
Acid	Inorganic and organic acid				100				
Base	Inorganic and organic base				100				
Oxidizer	Neutral oxidizers, Organic peroxides, Oxidizing acid/base								
Asbestos	Asbestos								
Universal Waste (UW)*	Mercury containing automatic switches / thermometers / and novelties								
	Mercury containing thermostats								
	Mercury containing waste (other)								
	Lamps					330			
	Photovoltaic Modules								
	Other batteries					3,870			
	Aerosol cans	500							
	Rechargeable batteries					200			



DEPARTMENT OF RESOURCES RECYCLING AND RECOVERY

1001 I STREET, SACRAMENTO, CALIFORNIA 95814 • www.CalRecycle.ca.gov • (916) 322-4027
P.O. BOX 4025, SACRAMENTO, CALIFORNIA 95812

Disposition (pounds)	Material Type	Destructive Incineration	Fuel Incineration	Landfill	Neutralization / Treatment	Recycled	Reused	Stabilization	Steward
Electronic Devices (UW)	Covered Electronic Devices					23,700			
	Other Electronic Devices					7,110			
	Electronic Devices (UW) subtotal					30,810			
	Universal Waste (UW)* + Electronic Devices (UW) subtotal	500				35,210			
Other	Home-generated sharps waste	780							
	Home-generated pharmaceutical waste								
	Treated wood								
	non-RCRA Liquids			250					
	Other								
	Reuse Total								
	Other subtotal	780		250					
	Grand Total	1,730	2,900	250	200	43,950			