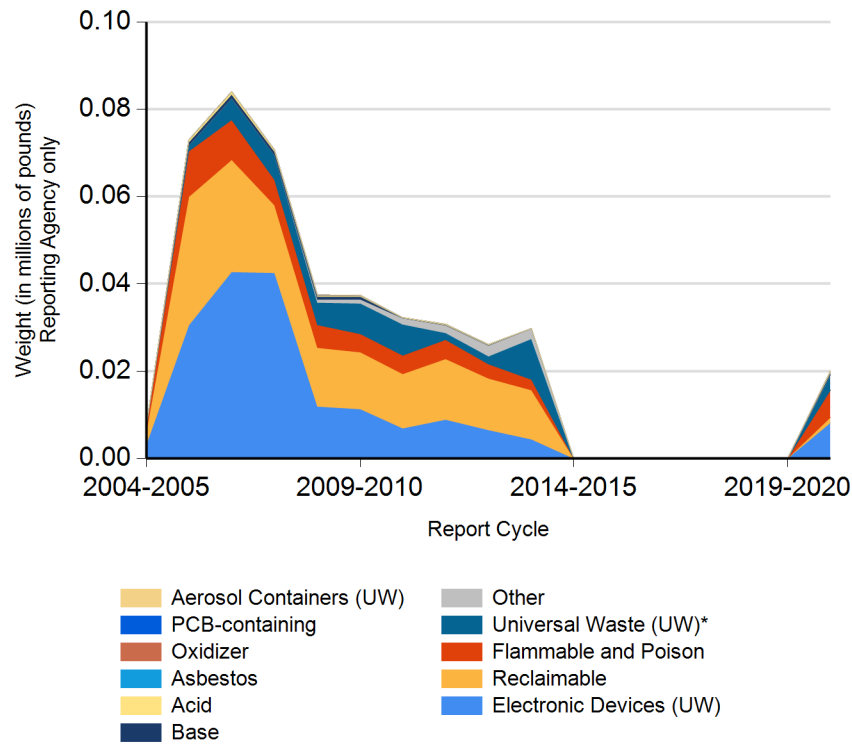


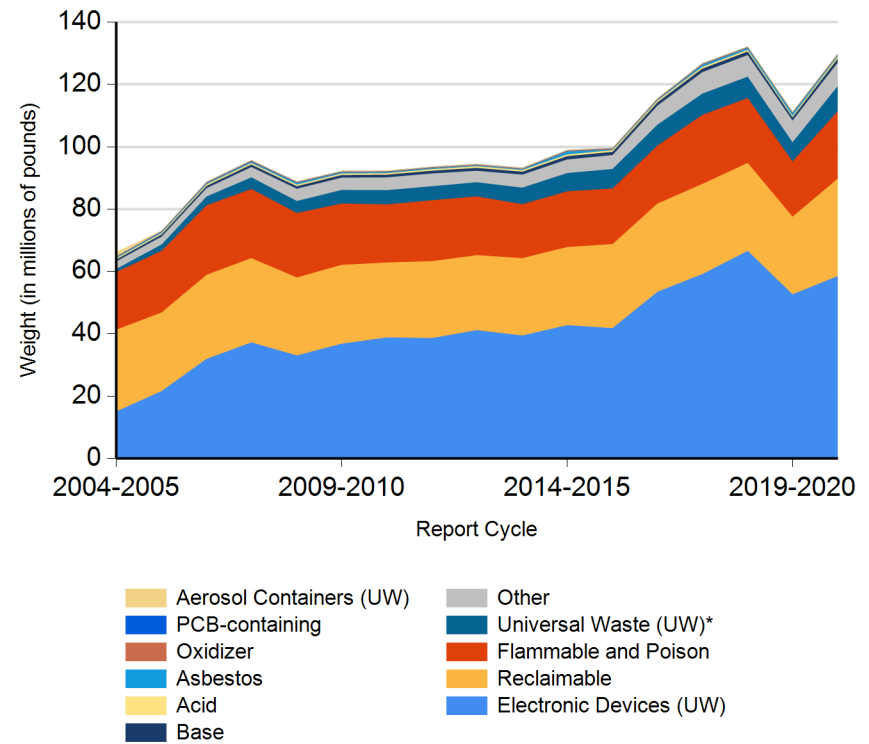


Form CalRecycle 303 Household Hazardous Waste Collection Information For 2020-2021

HHW Collection By Material Categories (City of Mission Viejo)

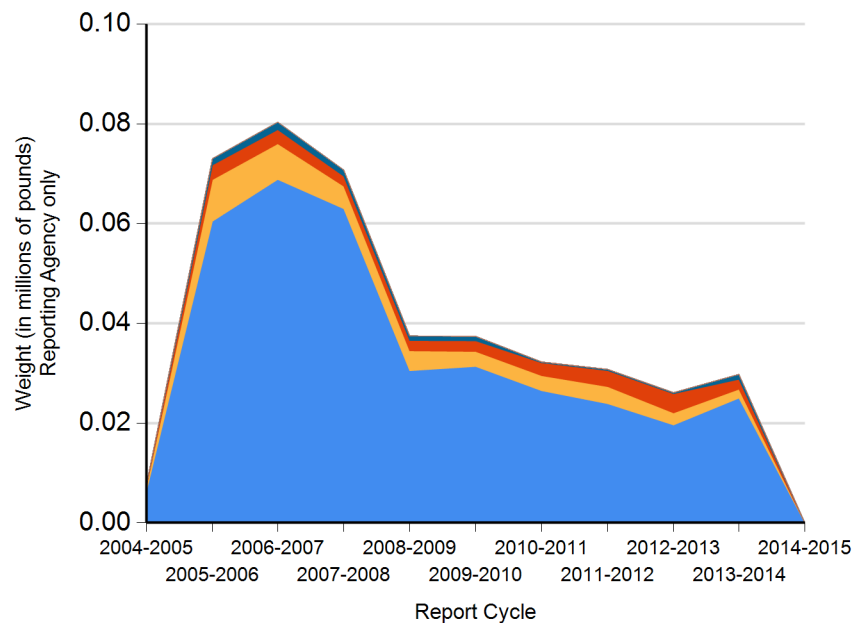


HHW Collection By Material Categories (Statewide)



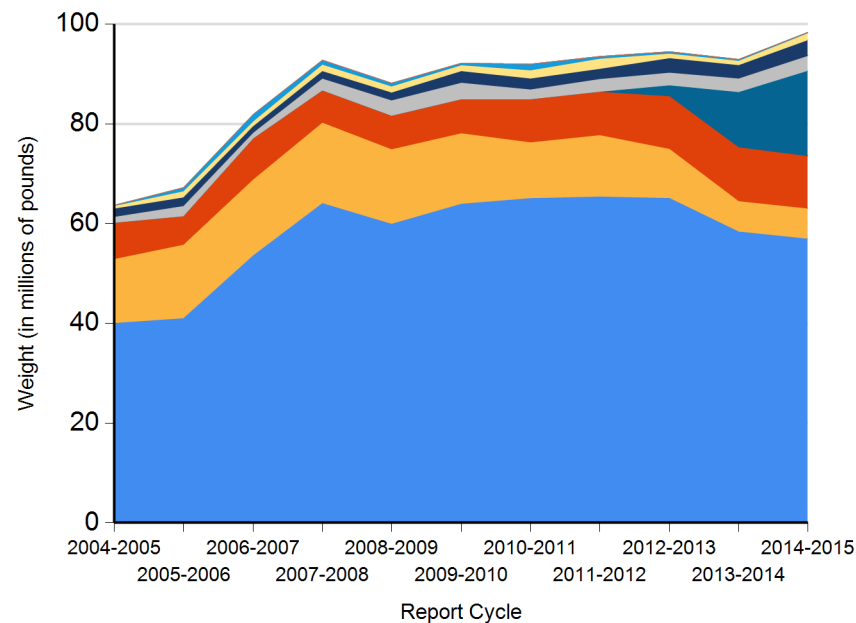


HHW Disposition By Disposition Method (City of Mission Viejo)



TRC Reused Destructive Incineration
PaintCare Landfill Fuel Incineration
Stabilization Neutralization / Treatment Recycled

HHW Disposition By Disposition Method (Statewide)



TRC Reused Destructive Incineration
Stabilization Landfill Fuel Incineration
Neutralization / Treatment PaintCare Recycled



Name of Public Agency Reporting: City of Mission Viejo

Contractor's Name: Waste Management

Participating Households: 550 **Method:** Number of Addresses

Participating Households includes non-residential (CESQG,schools,nonprofits,etc.): No

Service Area Households: 29,632 Different than Finance E-5 report

Participants Represented by Reporting Jurisdiction/Agency (i.e., individual city(ies), county(ies), other agency(ies)):

Mission Viejo

Program Types:

Program Type	EPAID
Temporary (periodic) Facility	CAH111001271



DEPARTMENT OF RESOURCES RECYCLING AND RECOVERY

1001 I STREET, SACRAMENTO, CALIFORNIA 95814 • www.CalRecycle.ca.gov • (916) 322-4027
P.O. BOX 4025, SACRAMENTO, CALIFORNIA 95812

Collection (pounds)	Material Type	Permanent Facility	Temporary (periodic) Facility	Mobile Facility	Recycle-only Facility	Door to Door (residential) Program	Curbside Program	Load Check	Other
Flammable and Poison	Flammable solids / liquids		4,150						
	Bulked flammable liquids								
	Oil-based paints								
	Paint Related Material (PRM)								
	Poisons		2,000						
	Reactive and explosive								
	Compressed gas cylinders		107						
	1 lb propane canister								
	Flammable and Poison subtotal		6,257						
PCB-containing	PCB-containing paint								
	Other PCB waste (includes ballasts)								
	PCB-containing subtotal								
Reclaimable	Antifreeze		517						
	Auto type batteries (motor vehicles)								
	Latex paint								
	Motor oil/oil products		700						
	Used oil filters (recyclables only)								
	Reclaimable subtotal		1,217						
Acid	Inorganic and organic acid		350						
Base	Inorganic and organic base		450						
Oxidizer	Neutral oxidizers, Organic peroxides, Oxidizing acid/base		85						
Asbestos	Asbestos								
Universal Waste (UW)*	Mercury containing automatic switches / thermometers / and novelties		5						
	Mercury containing thermostats								
	Mercury containing waste (other)								
	Lamps		375						
	Photovoltaic Modules								
	Other batteries		2,453						
	Aerosol cans		700						
	Rechargeable batteries								



DEPARTMENT OF RESOURCES RECYCLING AND RECOVERY

1001 I STREET, SACRAMENTO, CALIFORNIA 95814 • www.CalRecycle.ca.gov • (916) 322-4027
P.O. BOX 4025, SACRAMENTO, CALIFORNIA 95812

Collection (pounds)	Material Type	Permanent Facility	Temporary (periodic) Facility	Mobile Facility	Recycle-only Facility	Door to Door (residential) Program	Curbside Program	Load Check	Other
Electronic Devices (UW)	Covered Electronic Devices		3,141						
	Other Electronic Devices		5,036						
	Electronic Devices (UW) subtotal		8,177						
	Universal Waste (UW)* + Electronic Devices (UW) subtotal		11,710						
Other	Home-generated sharps waste		30						
	Home-generated pharmaceutical waste		15						
	Treated wood								
	Other								
	Reuse Total								
	Other subtotal		45						
	Grand Total		20,114						



DEPARTMENT OF RESOURCES RECYCLING AND RECOVERY

1001 I STREET, SACRAMENTO, CALIFORNIA 95814 • www.CalRecycle.ca.gov • (916) 322-4027
P.O. BOX 4025, SACRAMENTO, CALIFORNIA 95812

Disposition (pounds)	Material Type	Destructive Incineration	Fuel Incineration	Landfill	Neutralization / Treatment	Recycled	Reused	Stabilization	Steward
Flammable and Poison	Flammable solids / liquids					4,150			
	Bulked flammable liquids								
	Oil-based paints								
	Paint Related Material (PRM)								
	Poisons	2,000							
	Reactive and explosive								
	Compressed gas cylinders					107			
	1 lb propane canister								
	Flammable and Poison subtotal	2,000				4,257			
PCB-containing	PCB-containing paint								
	Other PCB waste (includes ballasts)								
	PCB-containing subtotal								
Reclaimable	Antifreeze					517			
	Auto type batteries (motor vehicles)								
	Latex paint								
	Motor oil/oil products					700			
	Used oil filters (recyclables only)								
	Reclaimable subtotal					1,217			
Acid	Inorganic and organic acid	350							
Base	Inorganic and organic base	450							
Oxidizer	Neutral oxidizers, Organic peroxides, Oxidizing acid/base	85							
Asbestos	Asbestos								
Universal Waste (UW)*	Mercury containing automatic switches / thermometers / and novelties					5			
	Mercury containing thermostats								
	Mercury containing waste (other)								
	Lamps					375			
	Photovoltaic Modules								
	Other batteries					2,453			
	Aerosol cans					700			
	Rechargeable batteries								



DEPARTMENT OF RESOURCES RECYCLING AND RECOVERY

1001 I STREET, SACRAMENTO, CALIFORNIA 95814 • www.CalRecycle.ca.gov • (916) 322-4027
P.O. BOX 4025, SACRAMENTO, CALIFORNIA 95812

Disposition (pounds)	Material Type	Destructive Incineration	Fuel Incineration	Landfill	Neutralization / Treatment	Recycled	Reused	Stabilization	Steward
Electronic Devices (UW)	Covered Electronic Devices					3,141			
	Other Electronic Devices					5,036			
	Electronic Devices (UW) subtotal					8,177			
	Universal Waste (UW)* + Electronic Devices (UW) subtotal					11,710			
Other	Home-generated sharps waste	30							
	Home-generated pharmaceutical waste	15							
	Treated wood								
	Other								
	Reuse Total								
	Other subtotal	45							
	Grand Total	2,930				17,184			