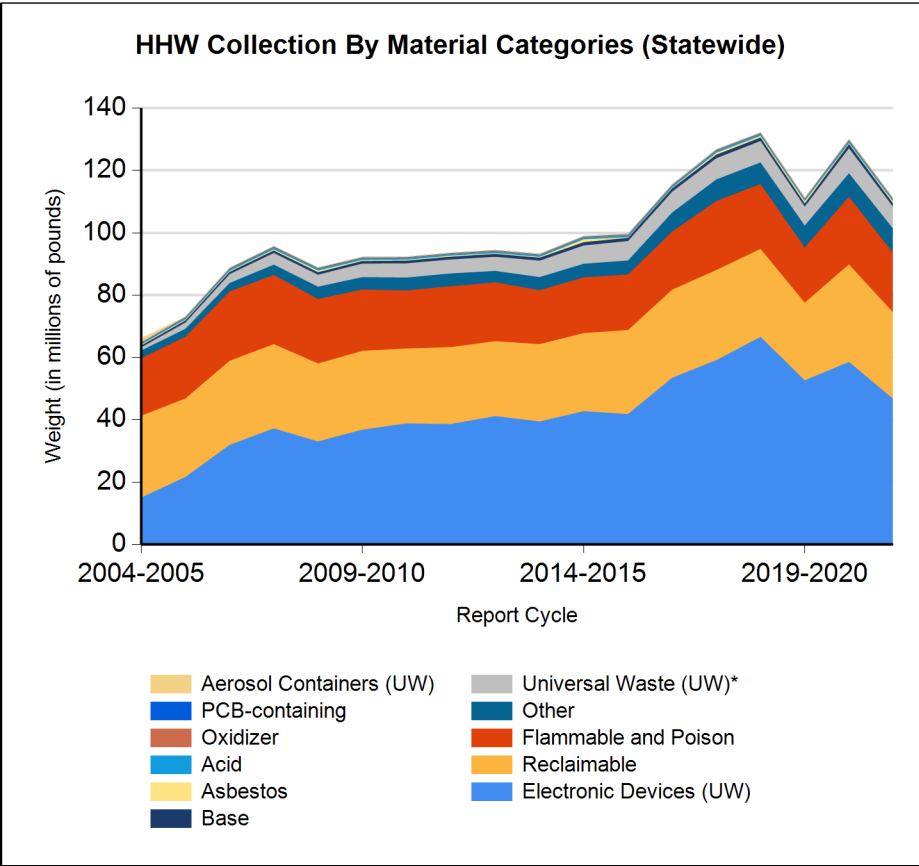
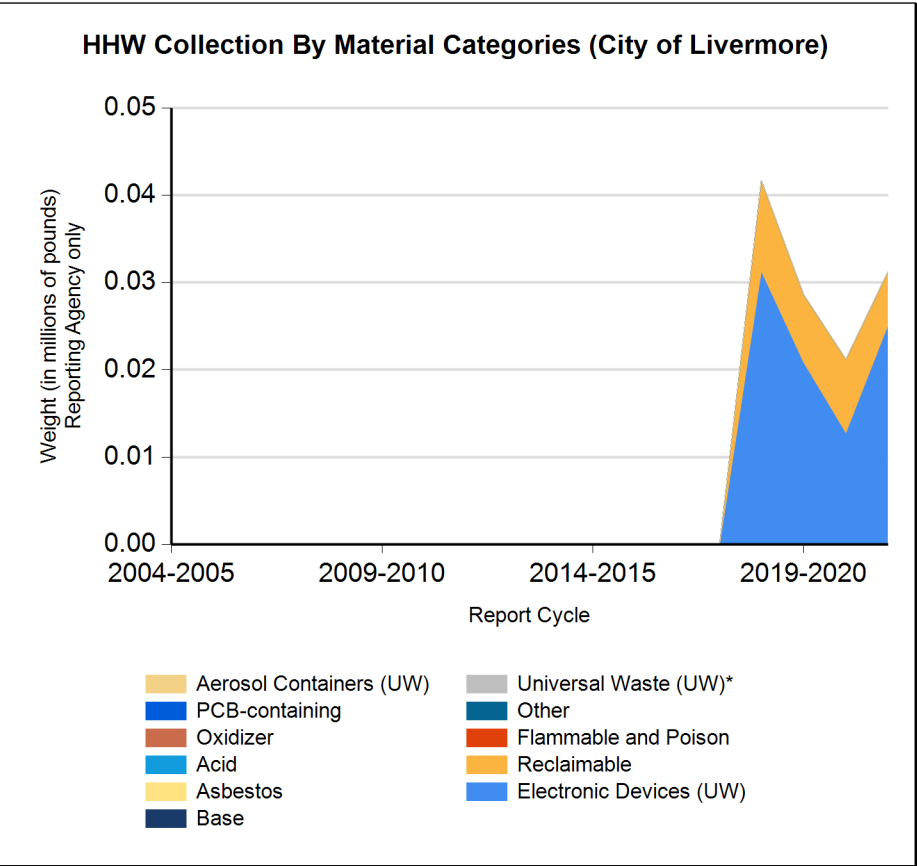


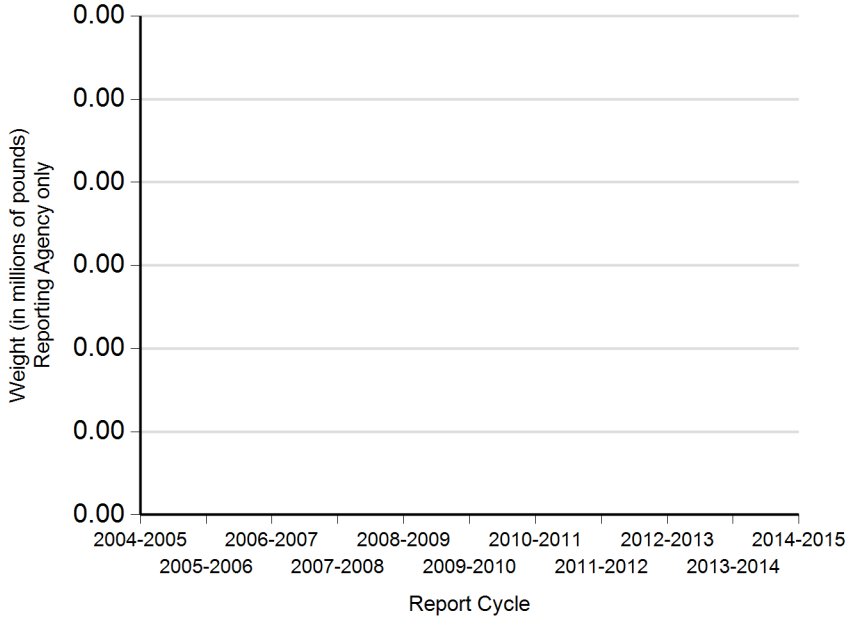


Form CalRecycle 303 Household Hazardous Waste Collection Information For 2021-2022



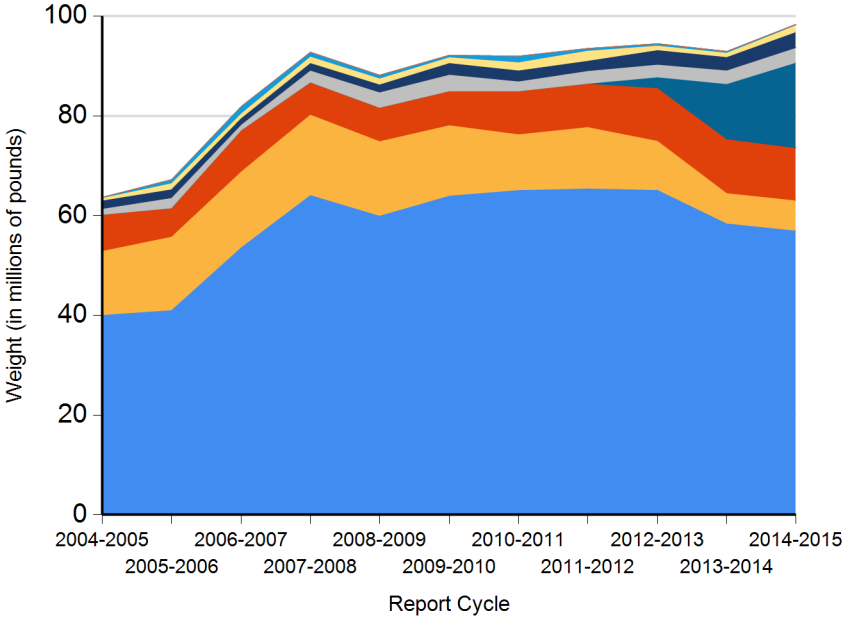


HHW Disposition By Disposition Method (City of Livermore)



TRC Neutralization / Treatment Fuel Incineration  
PaintCare Reused Destructive Incineration  
Stabilization Landfill Recycled

HHW Disposition By Disposition Method (Statewide)



TRC Reused Destructive Incineration  
Stabilization Landfill Fuel Incineration  
Neutralization / Treatment PaintCare Recycled



**Name of Public Agency Reporting:** City of Livermore

**Contractor's Name:** Livermore Sanitation Inc.

**Participating Households:** 26,236 **Method:** Number of Addresses

Participating Households includes non-residential (CESQG,schools,nonprofits,etc.): No

**Service Area Households:** 26,236

**Participants Represented by Reporting Jurisdiction/Agency (i.e., individual city(ies), county(ies), other agency(ies)):**

Livermore

**Program Types:**

Program Type	EPAID
Curbside Program	CAL000352126



# DEPARTMENT OF RESOURCES RECYCLING AND RECOVERY

1001 I STREET, SACRAMENTO, CALIFORNIA 95814 • www.CalRecycle.ca.gov • (916) 322-4027  
P.O. BOX 4025, SACRAMENTO, CALIFORNIA 95812

Collection (pounds)	Material Type	Permanent Facility	Temporary (periodic) Facility	Mobile Facility	Recycle-only Facility	Door to Door (residential) Program	Curbside Program	Load Check	Other
Flammable and Poison	Flammable solids / liquids								
	Bulked flammable liquids								
	Oil-based paints								
	Paint Related Material (PRM)								
	Poisons								
	Reactive and explosive								
	Compressed gas cylinders								
	1 lb propane canister								
	<b>Flammable and Poison subtotal</b>								
PCB-containing	PCB-containing paint								
	Other PCB waste (includes ballasts)								
	<b>PCB-containing subtotal</b>								
Reclaimable	Antifreeze								
	Auto type batteries (motor vehicles)								
	Latex paint								
	Motor oil/oil products						3,845		
	Used oil filters (recyclables only)						2,250		
	<b>Reclaimable subtotal</b>						<b>6,095</b>		
Acid	Inorganic and organic acid								
Base	Inorganic and organic base								
Oxidizer	Neutral oxidizers, Organic peroxides, Oxidizing acid/base								
Asbestos	Asbestos								
Universal Waste (UW)*	Mercury containing automatic switches / thermometers / and novelties								
	Mercury containing thermostats								
	Mercury containing waste (other)								
	Lamps								
	Photovoltaic Modules								
	Other batteries						18		
	Aerosol cans								
	Rechargeable batteries								



DEPARTMENT OF RESOURCES RECYCLING AND RECOVERY

1001 I STREET, SACRAMENTO, CALIFORNIA 95814 • www.CalRecycle.ca.gov • (916) 322-4027  
P.O. BOX 4025, SACRAMENTO, CALIFORNIA 95812

Collection (pounds)	Material Type	Permanent Facility	Temporary (periodic) Facility	Mobile Facility	Recycle-only Facility	Door to Door (residential) Program	Curbside Program	Load Check	Other
Electronic Devices (UW)	Covered Electronic Devices						20,383		
	Other Electronic Devices						4,792		
	Electronic Devices (UW) subtotal							25,175	
	Universal Waste (UW)* + Electronic Devices (UW) subtotal							25,193	
Other	Home-generated sharps waste								
	Home-generated pharmaceutical waste								
	Treated wood								
	Other								
	Reuse Total								
Other subtotal									
Grand Total								31,288	



# DEPARTMENT OF RESOURCES RECYCLING AND RECOVERY

1001 I STREET, SACRAMENTO, CALIFORNIA 95814 • www.CalRecycle.ca.gov • (916) 322-4027  
P.O. BOX 4025, SACRAMENTO, CALIFORNIA 95812

Disposition (pounds)	Material Type	Destructive Incineration	Fuel Incineration	Landfill	Neutralization / Treatment	Recycled	Reused	Stabilization	Steward
Flammable and Poison	Flammable solids / liquids								
	Bulked flammable liquids								
	Oil-based paints								
	Paint Related Material (PRM)								
	Poisons								
	Reactive and explosive								
	Compressed gas cylinders								
	1 lb propane canister								
	<b>Flammable and Poison subtotal</b>								
PCB-containing	PCB-containing paint								
	Other PCB waste (includes ballasts)								
	<b>PCB-containing subtotal</b>								
Reclaimable	Antifreeze								
	Auto type batteries (motor vehicles)								
	Latex paint								
	Motor oil/oil products					3,845			
	Used oil filters (recyclables only)					2,250			
	<b>Reclaimable subtotal</b>					<b>6,095</b>			
Acid	Inorganic and organic acid								
Base	Inorganic and organic base								
Oxidizer	Neutral oxidizers, Organic peroxides, Oxidizing acid/base								
Asbestos	Asbestos								
Universal Waste (UW)*	Mercury containing automatic switches / thermometers / and novelties								
	Mercury containing thermostats								
	Mercury containing waste (other)								
	Lamps								
	Photovoltaic Modules								
	Other batteries					18			
	Aerosol cans								
	Rechargeable batteries								



DEPARTMENT OF RESOURCES RECYCLING AND RECOVERY

1001 I STREET, SACRAMENTO, CALIFORNIA 95814 • www.CalRecycle.ca.gov • (916) 322-4027  
P.O. BOX 4025, SACRAMENTO, CALIFORNIA 95812

Disposition (pounds)	Material Type	Destructive Incineration	Fuel Incineration	Landfill	Neutralization / Treatment	Recycled	Reused	Stabilization	Steward
Electronic Devices (UW)	Covered Electronic Devices					20,383			
	Other Electronic Devices					4,792			
	Electronic Devices (UW) subtotal					25,175			
	Universal Waste (UW)* + Electronic Devices (UW) subtotal					25,193			
Other	Home-generated sharps waste								
	Home-generated pharmaceutical waste								
	Treated wood								
	Other								
	Reuse Total								
	Other subtotal								
	Grand Total					31,288			