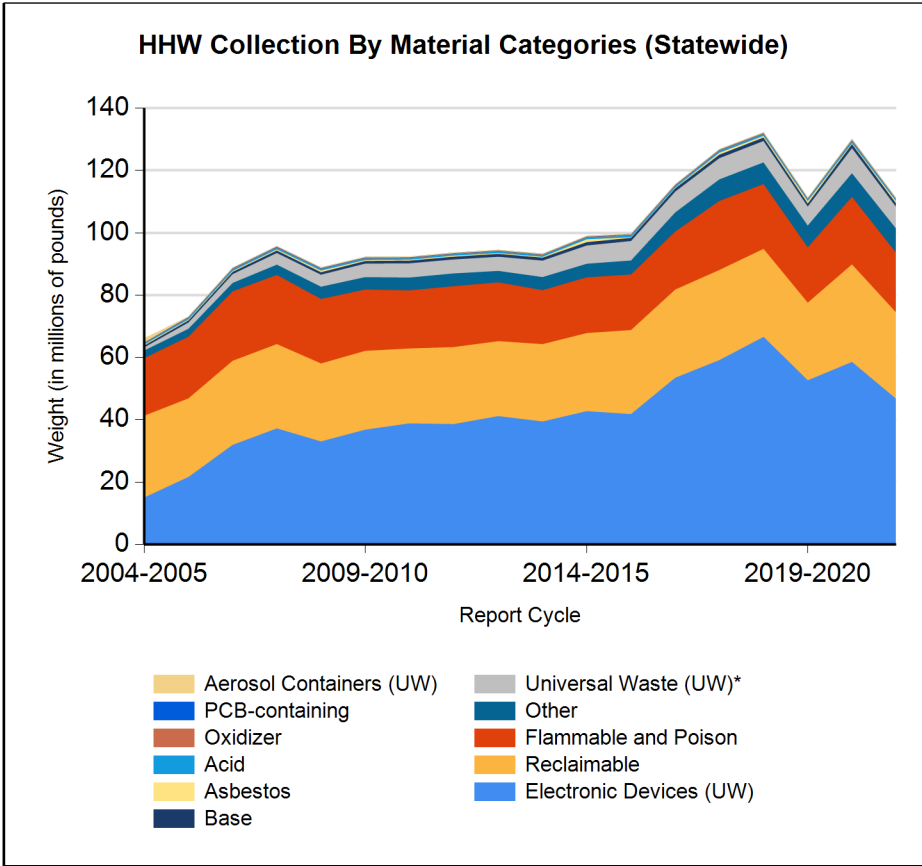
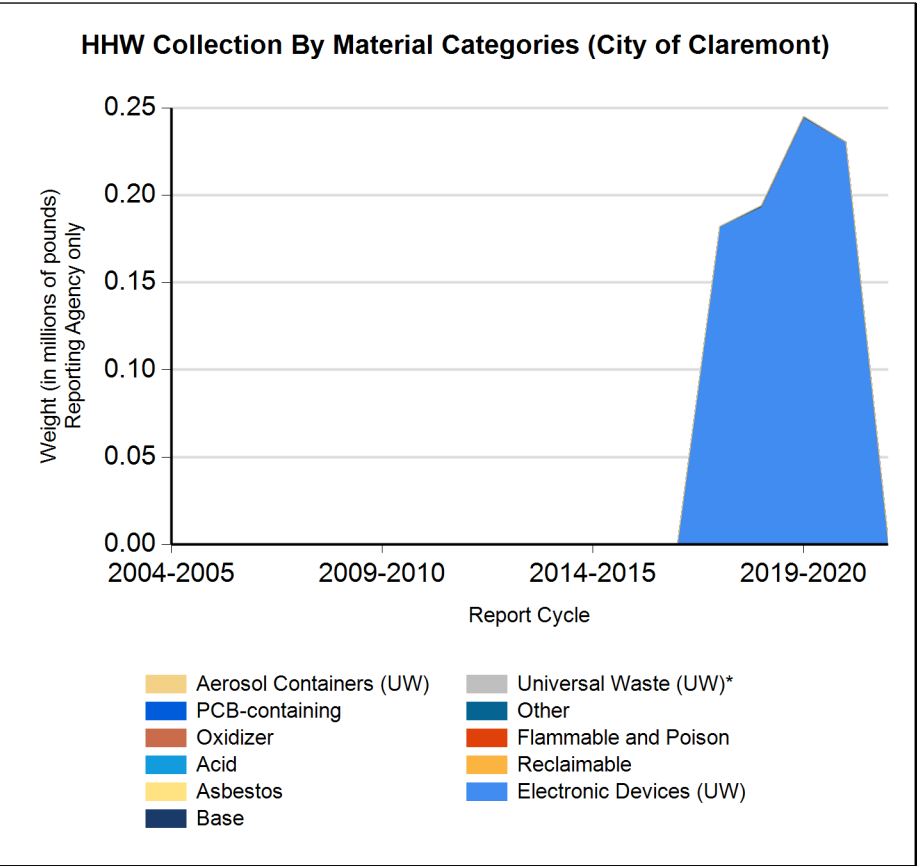


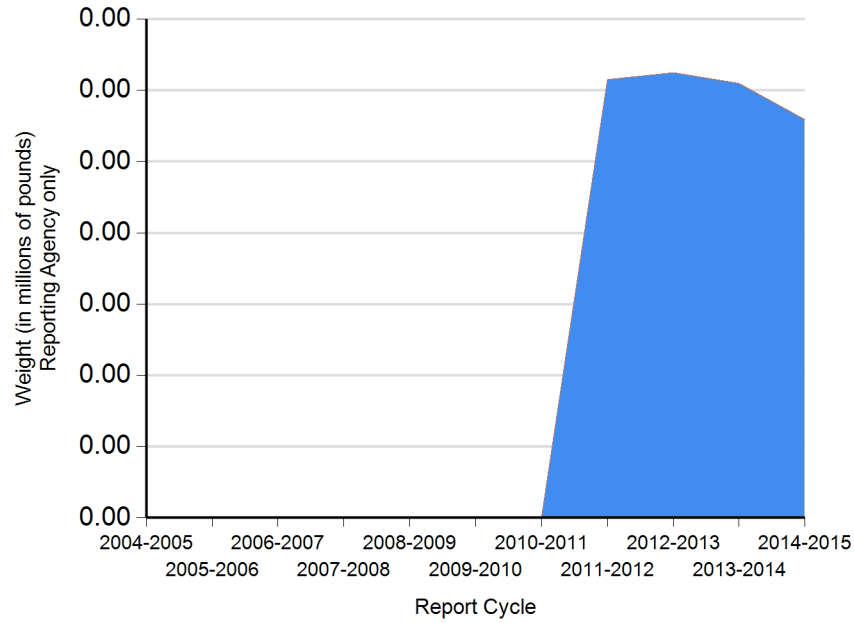


Form CalRecycle 303 Household Hazardous Waste Collection Information For 2021-2022

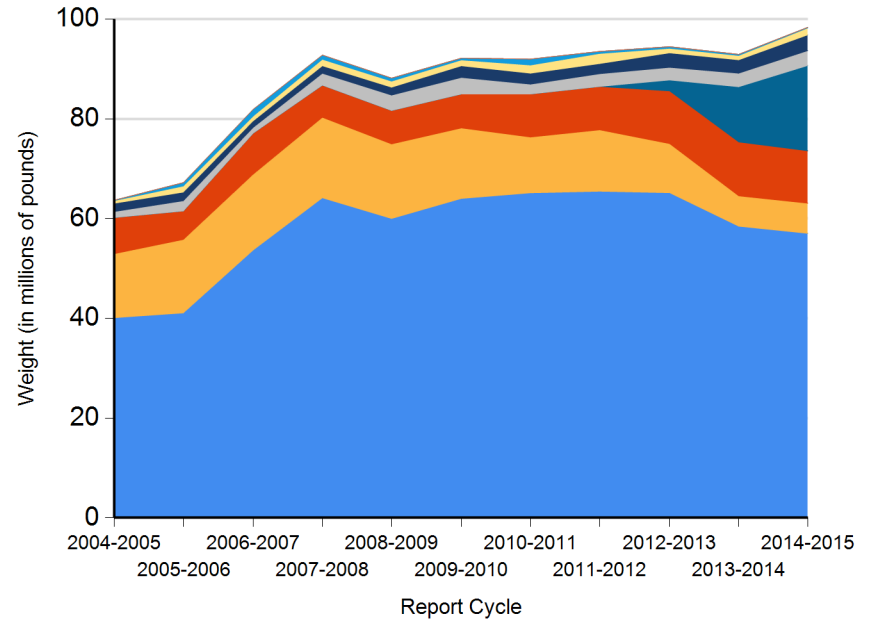




HHW Disposition By Disposition Method (City of Claremont)



HHW Disposition By Disposition Method (Statewide)





Name of Public Agency Reporting: City of Claremont

Contractor's Name: City of Claremont

Participating Households: 12,815

Method:

Participating Households includes non-residential (CESQG,schools,nonprofits,etc.): No

Service Area Households: 12,815

Participants Represented by Reporting Jurisdiction/Agency (i.e., individual city(ies), county(ies), other agency(ies)):

Claremont

Program Types:

Program Type	EPAID
Permanent Facility	CAL000291049



DEPARTMENT OF RESOURCES RECYCLING AND RECOVERY

1001 I STREET, SACRAMENTO, CALIFORNIA 95814 • www.CalRecycle.ca.gov • (916) 322-4027
P.O. BOX 4025, SACRAMENTO, CALIFORNIA 95812

Collection (pounds)	Material Type	Permanent Facility	Temporary (periodic) Facility	Mobile Facility	Recycle-only Facility	Door to Door (residential) Program	Curbside Program	Load Check	Other
Flammable and Poison	Flammable solids / liquids								
	Bulked flammable liquids								
	Oil-based paints								
	Paint Related Material (PRM)								
	Poisons								
	Reactive and explosive								
	Compressed gas cylinders								
	1 lb propane canister								
	Flammable and Poison subtotal								
PCB-containing	PCB-containing paint								
	Other PCB waste (includes ballasts)								
	PCB-containing subtotal								
Reclaimable	Antifreeze								
	Auto type batteries (motor vehicles)								
	Latex paint								
	Motor oil/oil products								
	Used oil filters (recyclables only)								
	Reclaimable subtotal								
Acid	Inorganic and organic acid								
Base	Inorganic and organic base								
Oxidizer	Neutral oxidizers, Organic peroxides, Oxidizing acid/base								
Asbestos	Asbestos								
Universal Waste (UW)*	Mercury containing automatic switches / thermometers / and novelties								
	Mercury containing thermostats								
	Mercury containing waste (other)								
	Lamps								
	Photovoltaic Modules								
	Other batteries								
	Aerosol cans								
	Rechargeable batteries								



DEPARTMENT OF RESOURCES RECYCLING AND RECOVERY

1001 I STREET, SACRAMENTO, CALIFORNIA 95814 • www.CalRecycle.ca.gov • (916) 322-4027
P.O. BOX 4025, SACRAMENTO, CALIFORNIA 95812

Collection (pounds)	Material Type	Permanent Facility	Temporary (periodic) Facility	Mobile Facility	Recycle-only Facility	Door to Door (residential) Program	Curbside Program	Load Check	Other
Electronic Devices (UW)	Covered Electronic Devices						300		
	Other Electronic Devices						1,500		
	Electronic Devices (UW) subtotal							1,800	
	Universal Waste (UW)* + Electronic Devices (UW) subtotal							1,800	
Other	Home-generated sharps waste	916							
	Home-generated pharmaceutical waste								
	Treated wood								
	Other								
	Reuse Total								
Other subtotal		916							
Grand Total		916						1,800	



DEPARTMENT OF RESOURCES RECYCLING AND RECOVERY

1001 I STREET, SACRAMENTO, CALIFORNIA 95814 • www.CalRecycle.ca.gov • (916) 322-4027
P.O. BOX 4025, SACRAMENTO, CALIFORNIA 95812

Disposition (pounds)	Material Type	Destructive Incineration	Fuel Incineration	Landfill	Neutralization / Treatment	Recycled	Reused	Stabilization	Steward
Flammable and Poison	Flammable solids / liquids								
	Bulked flammable liquids								
	Oil-based paints								
	Paint Related Material (PRM)								
	Poisons								
	Reactive and explosive								
	Compressed gas cylinders								
	1 lb propane canister								
	Flammable and Poison subtotal								
PCB-containing	PCB-containing paint								
	Other PCB waste (includes ballasts)								
	PCB-containing subtotal								
Reclaimable	Antifreeze								
	Auto type batteries (motor vehicles)								
	Latex paint								
	Motor oil/oil products								
	Used oil filters (recyclables only)								
	Reclaimable subtotal								
Acid	Inorganic and organic acid								
Base	Inorganic and organic base								
Oxidizer	Neutral oxidizers, Organic peroxides, Oxidizing acid/base								
Asbestos	Asbestos								
Universal Waste (UW)*	Mercury containing automatic switches / thermometers / and novelties								
	Mercury containing thermostats								
	Mercury containing waste (other)								
	Lamps								
	Photovoltaic Modules								
	Other batteries								
	Aerosol cans								
	Rechargeable batteries								



DEPARTMENT OF RESOURCES RECYCLING AND RECOVERY

1001 I STREET, SACRAMENTO, CALIFORNIA 95814 • www.CalRecycle.ca.gov • (916) 322-4027
P.O. BOX 4025, SACRAMENTO, CALIFORNIA 95812

Disposition (pounds)	Material Type	Destructive Incineration	Fuel Incineration	Landfill	Neutralization / Treatment	Recycled	Reused	Stabilization	Steward
Electronic Devices (UW)	Covered Electronic Devices					300			
	Other Electronic Devices					1,500			
	Electronic Devices (UW) subtotal					1,800			
	Universal Waste (UW)* + Electronic Devices (UW) subtotal					1,800			
Other	Home-generated sharps waste				916				
	Home-generated pharmaceutical waste								
	Treated wood								
	Other								
	Reuse Total								
	Other subtotal				916				
	Grand Total				916	1,800			