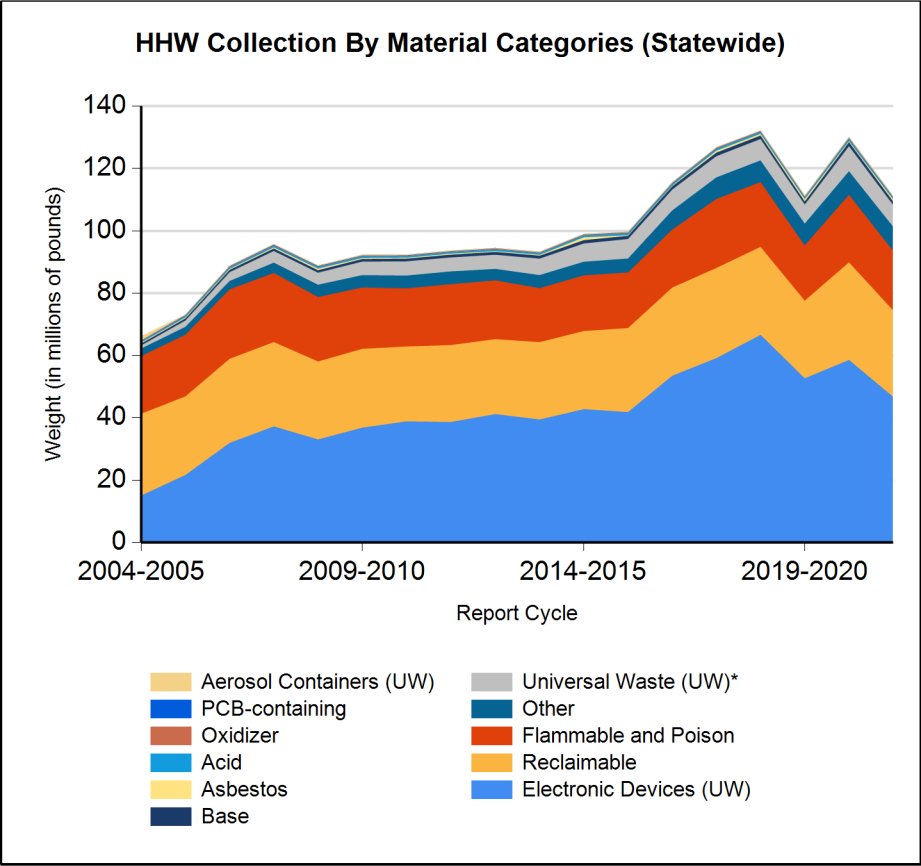
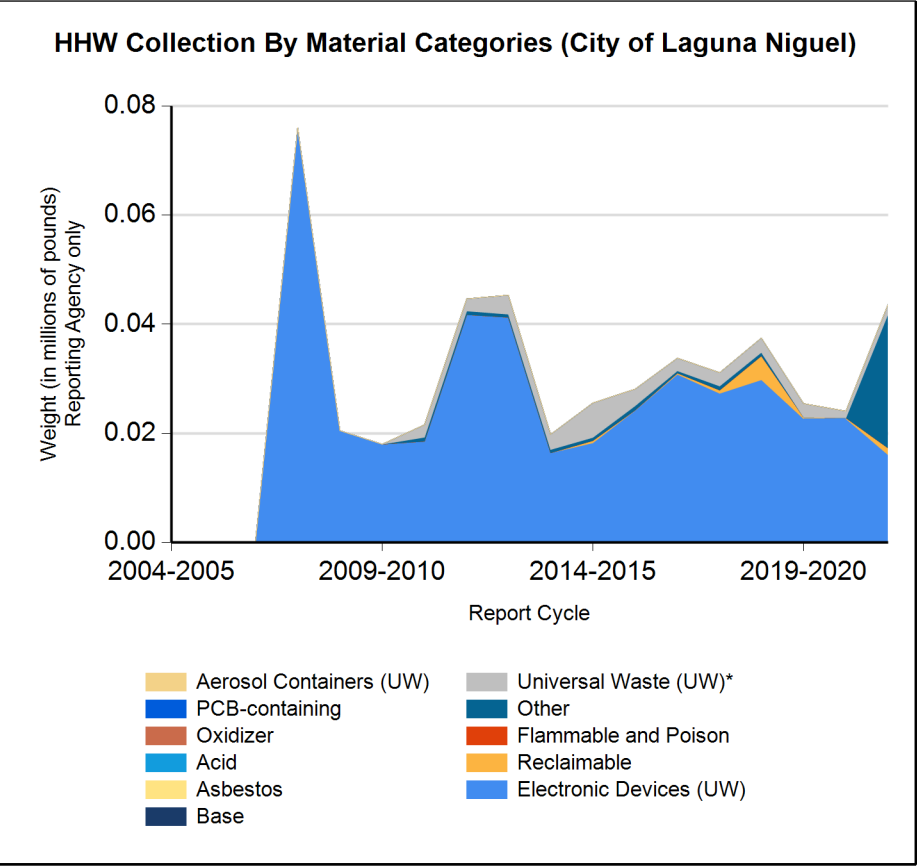


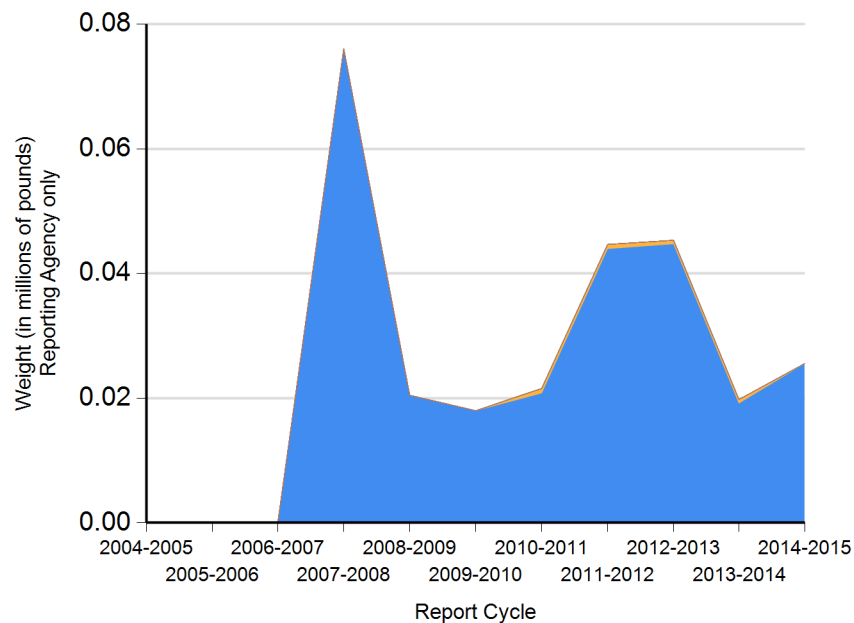


Form CalRecycle 303 Household Hazardous Waste Collection Information For 2021-2022



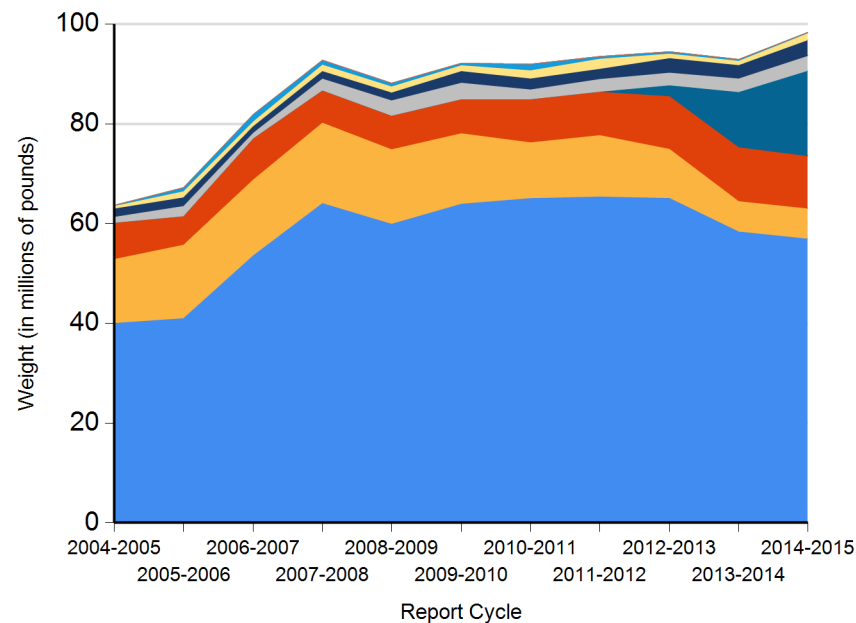


HHW Disposition By Disposition Method (City of Laguna Niguel)



TRC
PaintCare
Stabilization
Neutralization / Treatment
Landfill
Recycled
Fuel Incineration
Destructive Incineration

HHW Disposition By Disposition Method (Statewide)



TRC
Stabilization
Neutralization / Treatment
Reused
Landfill
PaintCare
Fuel Incineration
Destructive Incineration
Recycled



Name of Public Agency Reporting: City of Laguna Niguel

Contractor's Name: CR&R Inc.

Participating Households: 419 **Method:** Number based on # of CR&R requests for e-waste collection, which in this reporting cycle was 419

Participating Households includes non-residential (CESQG,schools,nonprofits,etc.): No

Service Area Households: 28,822

Participants Represented by Reporting Jurisdiction/Agency (i.e., individual city(ies), county(ies), other agency(ies)):

Laguna Niguel

Program Types:

Program Type	EPAID	Program Type	EPAID	Program Type	EPAID	Program Type	EPAID
Temporary (periodic) Facility	CAD981973431	Temporary (periodic) Facility	CAD981433870	Curbside Program	CAR000202937	Used Oil Drop-off Locations	CAD981692098
Sharps Collection	CAC003201531						



DEPARTMENT OF RESOURCES RECYCLING AND RECOVERY

1001 I STREET, SACRAMENTO, CALIFORNIA 95814 • www.CalRecycle.ca.gov • (916) 322-4027
P.O. BOX 4025, SACRAMENTO, CALIFORNIA 95812

Collection (pounds)	Material Type	Permanent Facility	Temporary (periodic) Facility	Mobile Facility	Recycle-only Facility	Door to Door (residential) Program	Curbside Program	Load Check	Other
Flammable and Poison	Flammable solids / liquids								
	Bulked flammable liquids								
	Oil-based paints								
	Paint Related Material (PRM)								
	Poisons								
	Reactive and explosive								
	Compressed gas cylinders								
	1 lb propane canister								
	Flammable and Poison subtotal								
PCB-containing	PCB-containing paint								
	Other PCB waste (includes ballasts)								
	PCB-containing subtotal								
Reclaimable	Antifreeze								
	Auto type batteries (motor vehicles)								
	Latex paint								
	Motor oil/oil products	1,160							
	Used oil filters (recyclables only)	90							
	Reclaimable subtotal	1,250							
Acid	Inorganic and organic acid								
Base	Inorganic and organic base								
Oxidizer	Neutral oxidizers, Organic peroxides, Oxidizing acid/base								
Asbestos	Asbestos								
Universal Waste (UW)*	Mercury containing automatic switches / thermometers / and novelties								
	Mercury containing thermostats								
	Mercury containing waste (other)								
	Lamps	365							
	Photovoltaic Modules								
	Other batteries	1,416							
	Aerosol cans								
	Rechargeable batteries								



DEPARTMENT OF RESOURCES RECYCLING AND RECOVERY

1001 I STREET, SACRAMENTO, CALIFORNIA 95814 • www.CalRecycle.ca.gov • (916) 322-4027
P.O. BOX 4025, SACRAMENTO, CALIFORNIA 95812

Collection (pounds)	Material Type	Permanent Facility	Temporary (periodic) Facility	Mobile Facility	Recycle-only Facility	Door to Door (residential) Program	Curbside Program	Load Check	Other
Electronic Devices (UW)	Covered Electronic Devices	12,922							
	Other Electronic Devices	3,115							
	Electronic Devices (UW) subtotal	16,037							
	Universal Waste (UW)* + Electronic Devices (UW) subtotal	17,818							
Other	Home-generated sharps waste	24,637							
	Home-generated pharmaceutical waste								
	Treated wood								
	Other								
	Reuse Total								
	Other subtotal	24,637							
	Grand Total	43,705							



DEPARTMENT OF RESOURCES RECYCLING AND RECOVERY

1001 I STREET, SACRAMENTO, CALIFORNIA 95814 • www.CalRecycle.ca.gov • (916) 322-4027
P.O. BOX 4025, SACRAMENTO, CALIFORNIA 95812

Disposition (pounds)	Material Type	Destructive Incineration	Fuel Incineration	Landfill	Neutralization / Treatment	Recycled	Reused	Stabilization	Steward
Flammable and Poison	Flammable solids / liquids								
	Bulked flammable liquids								
	Oil-based paints								
	Paint Related Material (PRM)								
	Poisons								
	Reactive and explosive								
	Compressed gas cylinders								
	1 lb propane canister								
	Flammable and Poison subtotal								
PCB-containing	PCB-containing paint								
	Other PCB waste (includes ballasts)								
	PCB-containing subtotal								
Reclaimable	Antifreeze								
	Auto type batteries (motor vehicles)								
	Latex paint								
	Motor oil/oil products					1,160			
	Used oil filters (recyclables only)					90			
	Reclaimable subtotal					1,250			
Acid	Inorganic and organic acid								
Base	Inorganic and organic base								
Oxidizer	Neutral oxidizers, Organic peroxides, Oxidizing acid/base								
Asbestos	Asbestos								
Universal Waste (UW)*	Mercury containing automatic switches / thermometers / and novelties								
	Mercury containing thermostats								
	Mercury containing waste (other)								
	Lamps					365			
	Photovoltaic Modules								
	Other batteries					1,416			
	Aerosol cans								
	Rechargeable batteries								



DEPARTMENT OF RESOURCES RECYCLING AND RECOVERY

1001 I STREET, SACRAMENTO, CALIFORNIA 95814 • www.CalRecycle.ca.gov • (916) 322-4027
P.O. BOX 4025, SACRAMENTO, CALIFORNIA 95812

Disposition (pounds)	Material Type	Destructive Incineration	Fuel Incineration	Landfill	Neutralization / Treatment	Recycled	Reused	Stabilization	Steward
Electronic Devices (UW)	Covered Electronic Devices					12,922			
	Other Electronic Devices					3,115			
	Electronic Devices (UW) subtotal					16,037			
	Universal Waste (UW)* + Electronic Devices (UW) subtotal					17,818			
Other	Home-generated sharps waste	24,637							
	Home-generated pharmaceutical waste								
	Treated wood								
	Other								
	Reuse Total								
	Other subtotal	24,637							
	Grand Total	24,637				19,068			