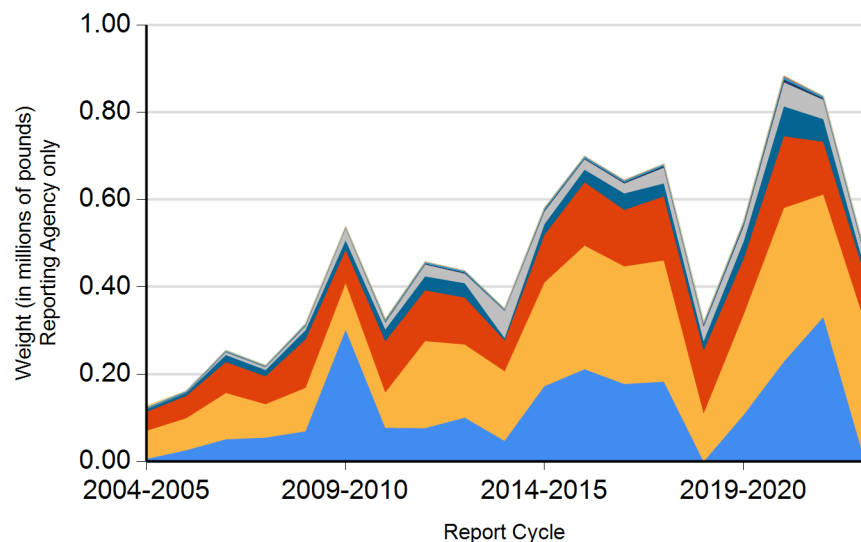




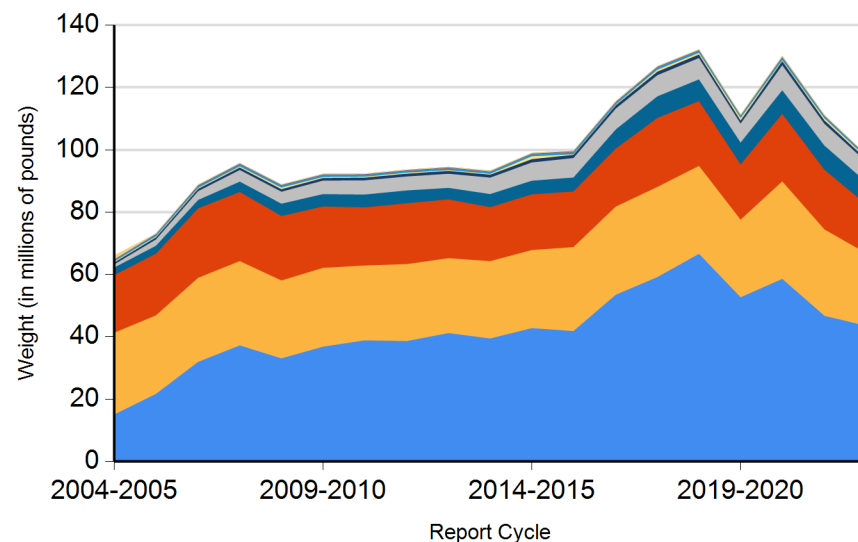
Form CalRecycle 303 Household Hazardous Waste Collection Information For 2022-2023

HHW Collection By Material Categories (City of Chula Vista)



- Aerosol Containers (UW)
- PCB-containing
- Oxidizer
- Acid
- Asbestos
- Base
- Universal Waste (UW)\*
- Other
- Flammable and Poison
- Reclaimable
- Electronic Devices (UW)

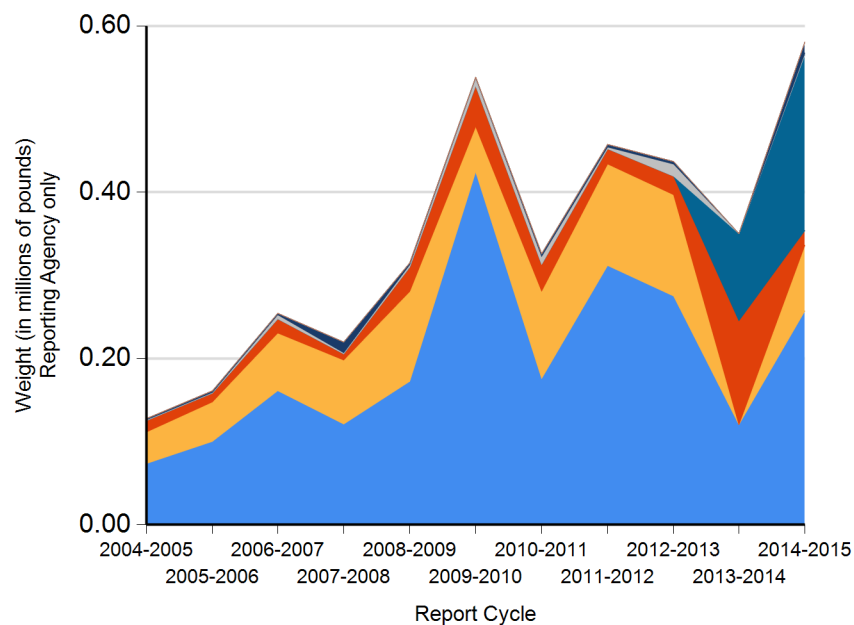
HHW Collection By Material Categories (Statewide)



- Aerosol Containers (UW)
- PCB-containing
- Oxidizer
- Acid
- Asbestos
- Base
- Universal Waste (UW)\*
- Other
- Flammable and Poison
- Reclaimable
- Electronic Devices (UW)

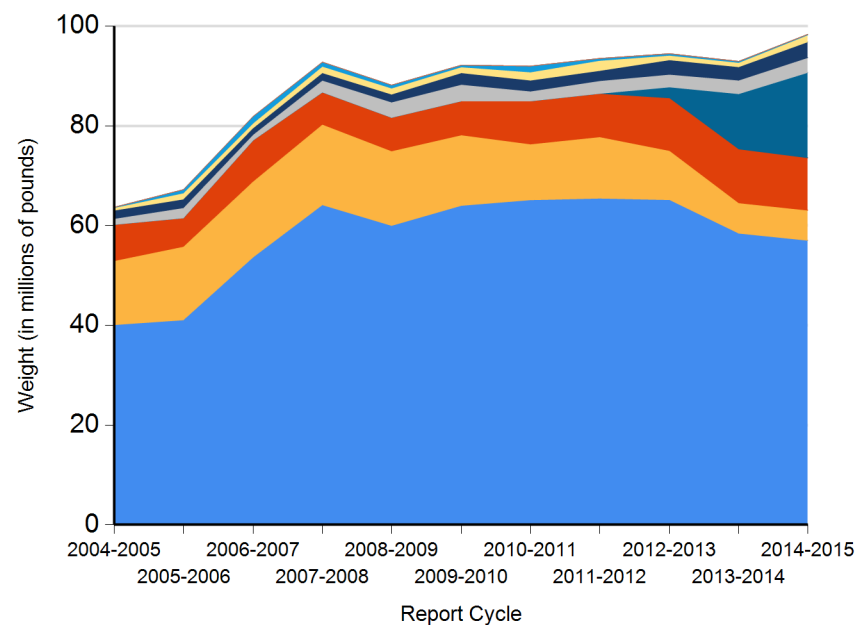


HHW Disposition By Disposition Method (City of Chula Vista)



TRC  
Stabilization  
Reused  
Neutralization / Treatment  
Landfill  
PaintCare  
Destructive Incineration  
Fuel Incineration  
Recycled

HHW Disposition By Disposition Method (Statewide)



TRC  
Stabilization  
Neutralization / Treatment  
Reused  
Landfill  
PaintCare  
Destructive Incineration  
Fuel Incineration  
Recycled



# DEPARTMENT OF RESOURCES RECYCLING AND RECOVERY

1001 I STREET, SACRAMENTO, CALIFORNIA 95814 • [www.CalRecycle.ca.gov](http://www.CalRecycle.ca.gov) • (916) 322-4027  
P.O. BOX 4025, SACRAMENTO, CALIFORNIA 95812

**Name of Public Agency Reporting:** City of Chula Vista

**Contractor's Name:** Clean Harbors

**Participating Households:** 10,076      **Method:** Number of Vehicles

Participating Households includes non-residential (CESQG,schools,nonprofits,etc.): No

**Service Area Households:** 285,511

**Participants Represented by Reporting Jurisdiction/Agency (i.e., individual city(ies), county(ies), other agency(ies)):**

Chula Vista

Imperial Beach

National City

San Diego-Unincorporated

**Program Types:**

Program Type	EPAID
Permanent Facility	CAH111000895



# DEPARTMENT OF RESOURCES RECYCLING AND RECOVERY

1001 I STREET, SACRAMENTO, CALIFORNIA 95814 • www.CalRecycle.ca.gov • (916) 322-4027  
P.O. BOX 4025, SACRAMENTO, CALIFORNIA 95812

Collection (pounds)	Material Type	Permanent Facility	Temporary (periodic) Facility	Mobile Facility	Recycle-only Facility	Door to Door (residential) Program	Curbside Program	Load Check	Other
Flammable and Poison	Flammable solids / liquids	76,200							
	Bulked flammable liquids								
	Oil-based paints	17,600							
	Paint Related Material (PRM)								
	Poisons	9,600							
	Reactive and explosive	314							
	Compressed gas cylinders	4,425							
	1 lb propane canister								
	<b>Flammable and Poison subtotal</b>	<b>108,139</b>							
PCB-containing	PCB-containing paint								
	Other PCB waste (includes ballasts)	158							
	<b>PCB-containing subtotal</b>	<b>158</b>							
Reclaimable	Antifreeze	21,241							
	Auto type batteries (motor vehicles)	36,435							
	Latex paint	194,000							
	Motor oil/oil products	63,495							
	Used oil filters (recyclables only)	1,300							
	<b>Reclaimable subtotal</b>	<b>316,471</b>							
Acid	Inorganic and organic acid	3,766							
Base	Inorganic and organic base	4,620							
Oxidizer	Neutral oxidizers, Organic peroxides, Oxidizing acid/base	598							
Asbestos	Asbestos								
Universal Waste (UW)*	Mercury containing automatic switches / thermometers / and novelties	26							
	Mercury containing thermostats	100							
	Mercury containing waste (other)								
	Lamps	6,875							
	Photovoltaic Modules								
	Other batteries	18,550							
	Aerosol cans								
	Rechargeable batteries	2,840							



# DEPARTMENT OF RESOURCES RECYCLING AND RECOVERY

1001 I STREET, SACRAMENTO, CALIFORNIA 95814 • [www.CalRecycle.ca.gov](http://www.CalRecycle.ca.gov) • (916) 322-4027  
P.O. BOX 4025, SACRAMENTO, CALIFORNIA 95812

Collection (pounds)	Material Type	Permanent Facility	Temporary (periodic) Facility	Mobile Facility	Recycle-only Facility	Door to Door (residential) Program	Curbside Program	Load Check	Other
Electronic Devices (UW)	Covered Electronic Devices	977							
	Other Electronic Devices	14,538							
	<b>Electronic Devices (UW) subtotal</b>	<b>15,515</b>							
	<b>Universal Waste (UW)* + Electronic Devices (UW) subtotal</b>	<b>43,906</b>							
Other	Home-generated sharps waste	15,250							
	Home-generated pharmaceutical waste								
	Treated wood	1,960							
	Other								
	Reuse Total								
	<b>Other subtotal</b>	<b>17,210</b>							
	<b>Grand Total</b>	<b>494,868</b>							



# DEPARTMENT OF RESOURCES RECYCLING AND RECOVERY

1001 I STREET, SACRAMENTO, CALIFORNIA 95814 • www.CalRecycle.ca.gov • (916) 322-4027  
P.O. BOX 4025, SACRAMENTO, CALIFORNIA 95812

Disposition (pounds)	Material Type	Destructive Incineration	Fuel Incineration	Landfill	Neutralization / Treatment	Recycled	Reused	Stabilization	Steward
Flammable and Poison	Flammable solids / liquids	5	95						
	Bulked flammable liquids		100						
	Oil-based paints		100						
	Paint Related Material (PRM)								
	Poisons	95		5					
	Reactive and explosive	100							
	Compressed gas cylinders	70	10		20				
	1 lb propane canister								
	<b>Flammable and Poison subtotal</b>	<b>270</b>	<b>305</b>	<b>5</b>	<b>20</b>				
PCB-containing	PCB-containing paint	40	60						
	Other PCB waste (includes ballasts)	20		60		20			
	<b>PCB-containing subtotal</b>	<b>60</b>	<b>60</b>	<b>60</b>		<b>20</b>			
Reclaimable	Antifreeze					100			
	Auto type batteries (motor vehicles)					100			
	Latex paint		10	10		80			
	Motor oil/oil products					100			
	Used oil filters (recyclables only)					100			
	<b>Reclaimable subtotal</b>		<b>10</b>	<b>10</b>		<b>480</b>			
Acid	Inorganic and organic acid	50			50				
Base	Inorganic and organic base	50			50				
Oxidizer	Neutral oxidizers, Organic peroxides, Oxidizing acid/base	5			95				
Asbestos	Asbestos			100					
Universal Waste (UW)*	Mercury containing automatic switches / thermometers / and novelties					100			
	Mercury containing thermostats					100			
	Mercury containing waste (other)					100			
	Lamps					100			
	Photovoltaic Modules								
	Other batteries					100			
	Aerosol cans								
	Rechargeable batteries					100			



# DEPARTMENT OF RESOURCES RECYCLING AND RECOVERY

1001 I STREET, SACRAMENTO, CALIFORNIA 95814 • www.CalRecycle.ca.gov • (916) 322-4027  
P.O. BOX 4025, SACRAMENTO, CALIFORNIA 95812

Disposition (pounds)	Material Type	Destructive Incineration	Fuel Incineration	Landfill	Neutralization / Treatment	Recycled	Reused	Stabilization	Steward
Electronic Devices (UW)	Covered Electronic Devices				100				
	Other Electronic Devices				100				
	Electronic Devices (UW) subtotal				200				
	Universal Waste (UW)* + Electronic Devices (UW) subtotal				200	600			
Other	Home-generated sharps waste	100							
	Home-generated pharmaceutical waste								
	Treated wood			100					
	Other								
	Reuse Total								
Other subtotal		100		100					
Grand Total		535	375	275	415	1,100			