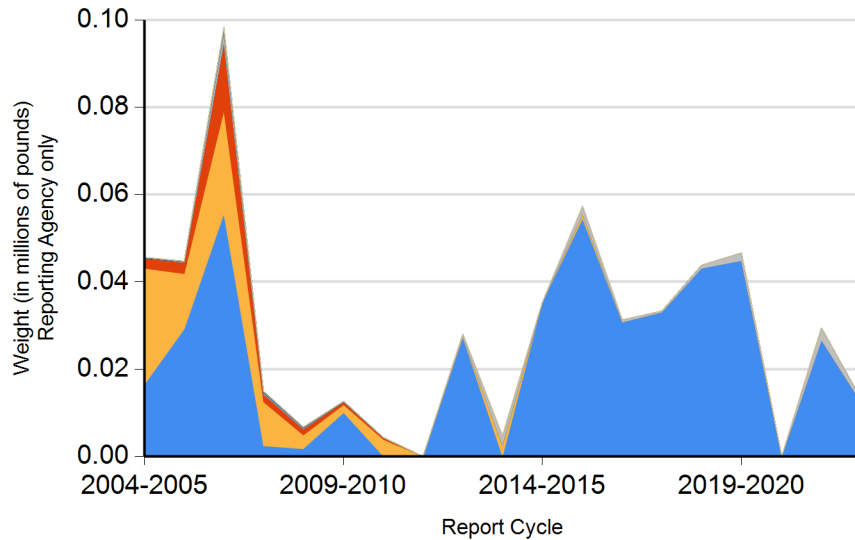




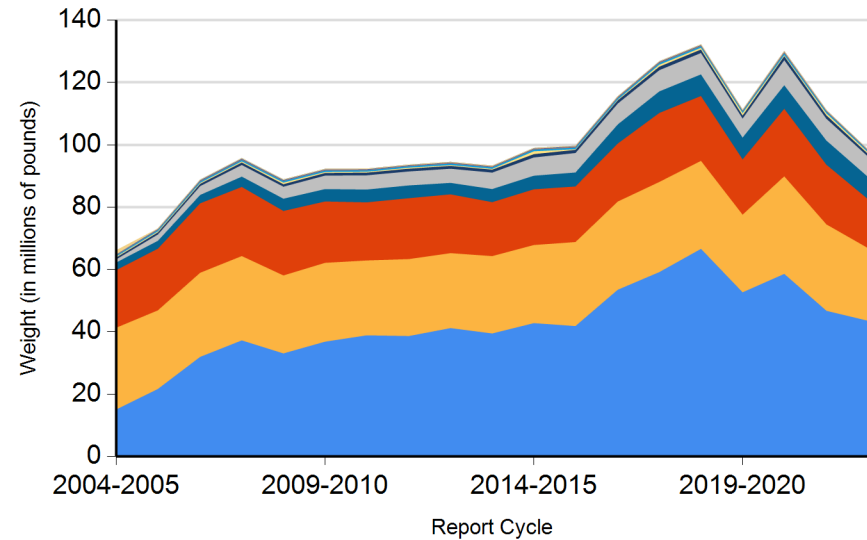
Form CalRecycle 303 Household Hazardous Waste Collection Information For 2022-2023

HHW Collection By Material Categories (City of Norwalk)



- Aerosol Containers (UW)
- PCB-containing
- Oxidizer
- Acid
- Asbestos
- Base
- Universal Waste (UW)\*
- Other
- Flammable and Poison
- Reclaimable
- Electronic Devices (UW)

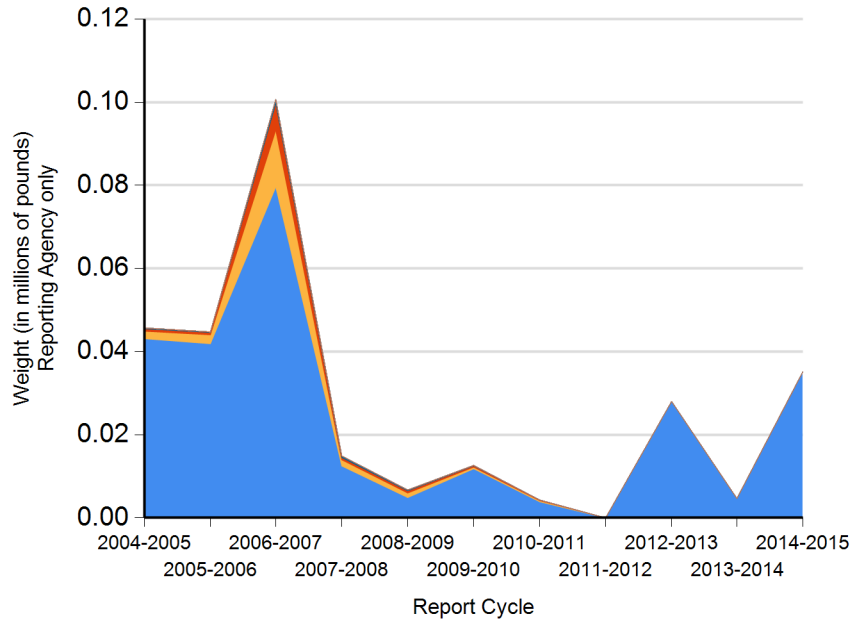
HHW Collection By Material Categories (Statewide)



- Aerosol Containers (UW)
- PCB-containing
- Oxidizer
- Acid
- Asbestos
- Base
- Universal Waste (UW)\*
- Other
- Flammable and Poison
- Reclaimable
- Electronic Devices (UW)

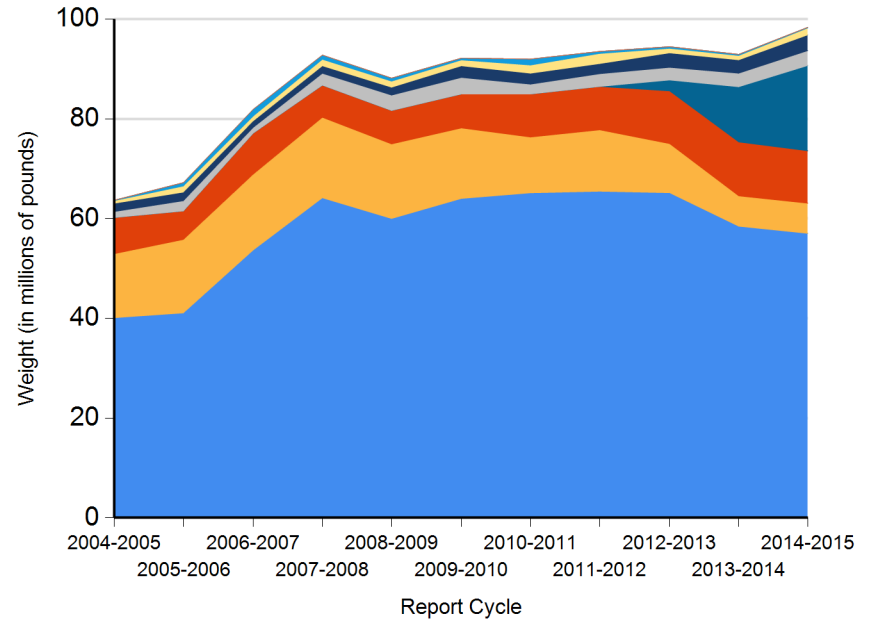


HHW Disposition By Disposition Method (City of Norwalk)



TRC Reused Destructive Incineration  
PaintCare Landfill Fuel Incineration  
Stabilization Neutralization / Treatment Recycled

HHW Disposition By Disposition Method (Statewide)



TRC Reused Destructive Incineration  
Stabilization Landfill Fuel Incineration  
Neutralization / Treatment PaintCare Recycled



**Name of Public Agency Reporting:** City of Norwalk

**Contractor's Name:**

**Participating Households:** 923                      **Method:** Number of Vehicles

Participating Households includes non-residential (CESQG,schools,nonprofits,etc.): No

**Service Area Households:** 28,738

**Participants Represented by Reporting Jurisdiction/Agency (i.e., individual city(ies), county(ies), other agency(ies)):**

Norwalk

**Program Types:**

Program Type	EPAID	Program Type	EPAID
Curbside Program	CAL000361542	Battery Collections	CAD982411993



# DEPARTMENT OF RESOURCES RECYCLING AND RECOVERY

1001 I STREET, SACRAMENTO, CALIFORNIA 95814 • www.CalRecycle.ca.gov • (916) 322-4027  
P.O. BOX 4025, SACRAMENTO, CALIFORNIA 95812

Collection (pounds)	Material Type	Permanent Facility	Temporary (periodic) Facility	Mobile Facility	Recycle-only Facility	Door to Door (residential) Program	Curbside Program	Load Check	Other
Flammable and Poison	Flammable solids / liquids								
	Bulked flammable liquids								
	Oil-based paints								
	Paint Related Material (PRM)								
	Poisons								
	Reactive and explosive								
	Compressed gas cylinders								
	1 lb propane canister								
Flammable and Poison subtotal									
PCB-containing	PCB-containing paint								
	Other PCB waste (includes ballasts)								
PCB-containing subtotal									
Reclaimable	Antifreeze								
	Auto type batteries (motor vehicles)								
	Latex paint								
	Motor oil/oil products								
	Used oil filters (recyclables only)								
Reclaimable subtotal									
Acid	Inorganic and organic acid								
Base	Inorganic and organic base								
Oxidizer	Neutral oxidizers, Organic peroxides, Oxidizing acid/base								
Asbestos	Asbestos								
Universal Waste (UW)*	Mercury containing automatic switches / thermometers / and novelties								
	Mercury containing thermostats								
	Mercury containing waste (other)								
	Lamps								
	Photovoltaic Modules								
	Other batteries						828		
	Aerosol cans								
	Rechargeable batteries								



DEPARTMENT OF RESOURCES RECYCLING AND RECOVERY

1001 I STREET, SACRAMENTO, CALIFORNIA 95814 • www.CalRecycle.ca.gov • (916) 322-4027  
P.O. BOX 4025, SACRAMENTO, CALIFORNIA 95812

Collection (pounds)	Material Type	Permanent Facility	Temporary (periodic) Facility	Mobile Facility	Recycle-only Facility	Door to Door (residential) Program	Curbside Program	Load Check	Other
Electronic Devices (UW)	Covered Electronic Devices						6,647		
	Other Electronic Devices						5,705		
	Electronic Devices (UW) subtotal								12,352
	Universal Waste (UW)* + Electronic Devices (UW) subtotal								13,180
Other	Home-generated sharps waste								
	Home-generated pharmaceutical waste								
	Treated wood								
	Other								
	Reuse Total								
Other subtotal									
Grand Total							13,180		



# DEPARTMENT OF RESOURCES RECYCLING AND RECOVERY

1001 I STREET, SACRAMENTO, CALIFORNIA 95814 • www.CalRecycle.ca.gov • (916) 322-4027  
P.O. BOX 4025, SACRAMENTO, CALIFORNIA 95812

Disposition (pounds)	Material Type	Destructive Incineration	Fuel Incineration	Landfill	Neutralization / Treatment	Recycled	Reused	Stabilization	Steward
Flammable and Poison	Flammable solids / liquids								
	Bulked flammable liquids								
	Oil-based paints								
	Paint Related Material (PRM)								
	Poisons								
	Reactive and explosive								
	Compressed gas cylinders								
	1 lb propane canister								
	Flammable and Poison subtotal								
PCB-containing	PCB-containing paint								
	Other PCB waste (includes ballasts)								
	PCB-containing subtotal								
Reclaimable	Antifreeze								
	Auto type batteries (motor vehicles)								
	Latex paint								
	Motor oil/oil products								
	Used oil filters (recyclables only)								
	Reclaimable subtotal								
Acid	Inorganic and organic acid								
Base	Inorganic and organic base								
Oxidizer	Neutral oxidizers, Organic peroxides, Oxidizing acid/base								
Asbestos	Asbestos								
Universal Waste (UW)*	Mercury containing automatic switches / thermometers / and novelties								
	Mercury containing thermostats								
	Mercury containing waste (other)								
	Lamps								
	Photovoltaic Modules								
	Other batteries					828			
	Aerosol cans								
	Rechargeable batteries								



DEPARTMENT OF RESOURCES RECYCLING AND RECOVERY

1001 I STREET, SACRAMENTO, CALIFORNIA 95814 • www.CalRecycle.ca.gov • (916) 322-4027  
P.O. BOX 4025, SACRAMENTO, CALIFORNIA 95812

Disposition (pounds)	Material Type	Destructive Incineration	Fuel Incineration	Landfill	Neutralization / Treatment	Recycled	Reused	Stabilization	Steward
Electronic Devices (UW)	Covered Electronic Devices					6,647			
	Other Electronic Devices					5,705			
	Electronic Devices (UW) subtotal					12,352			
	Universal Waste (UW)* + Electronic Devices (UW) subtotal					13,180			
Other	Home-generated sharps waste								
	Home-generated pharmaceutical waste								
	Treated wood								
	Other								
	Reuse Total								
	Other subtotal								
	Grand Total					13,180			