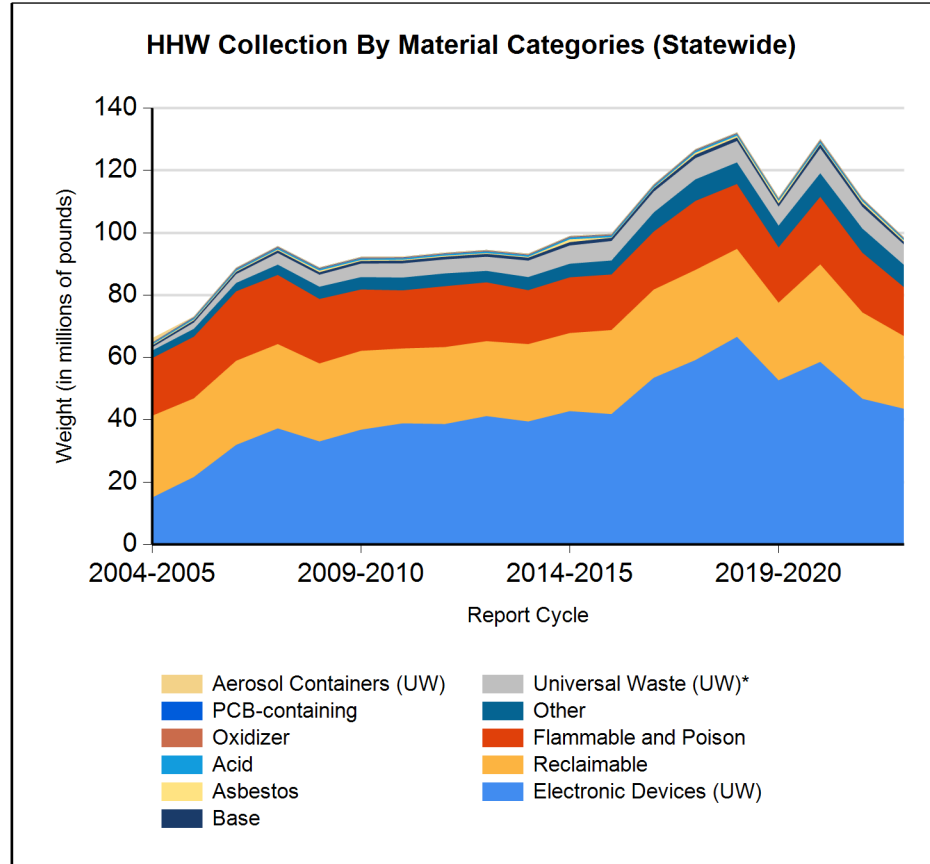
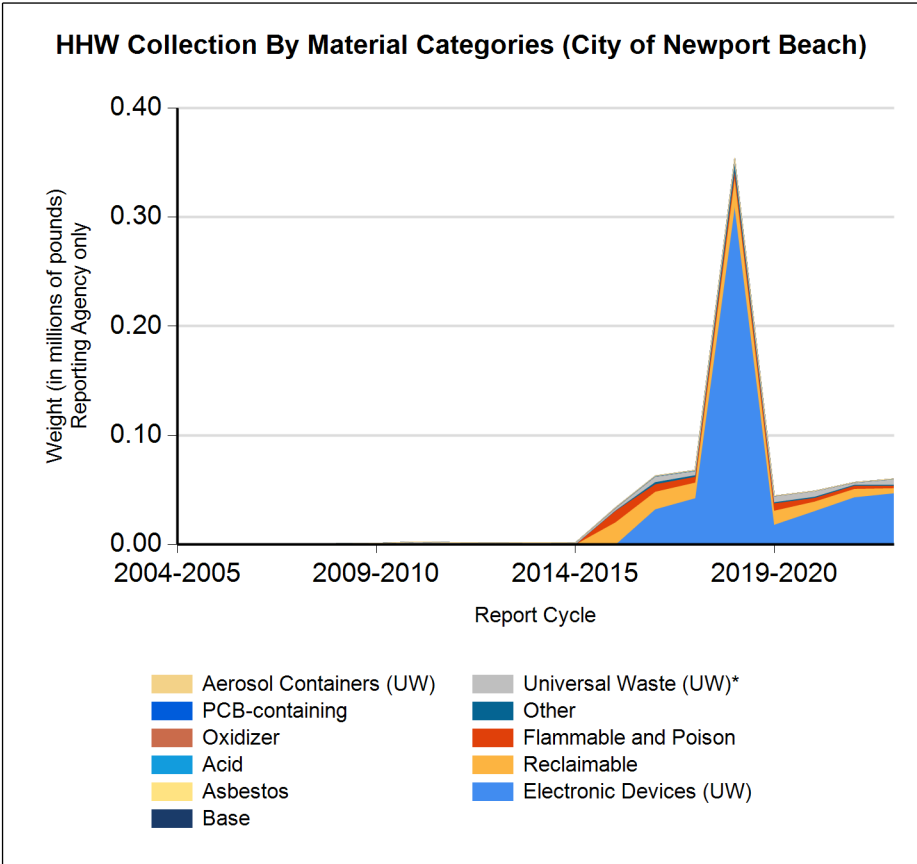


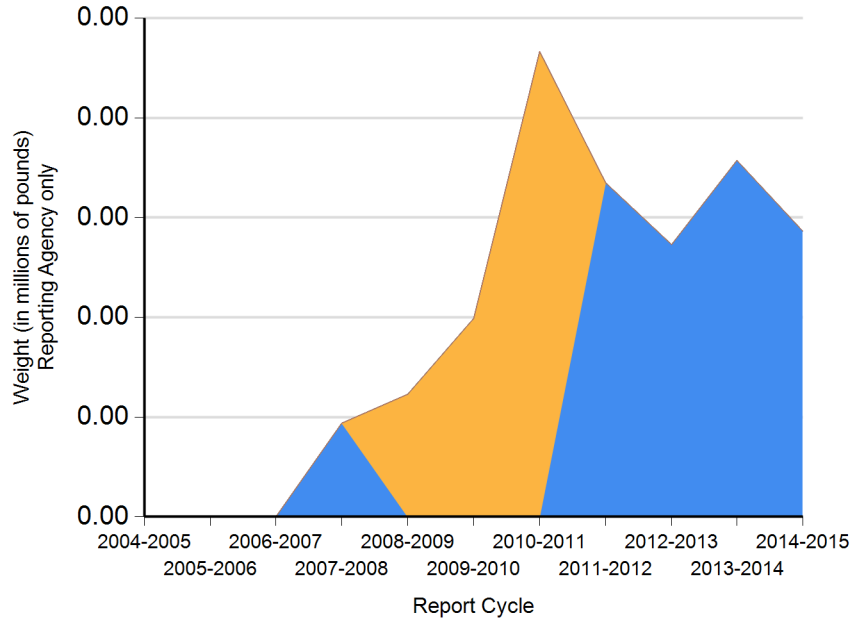


Form CalRecycle 303 Household Hazardous Waste Collection Information For 2022-2023



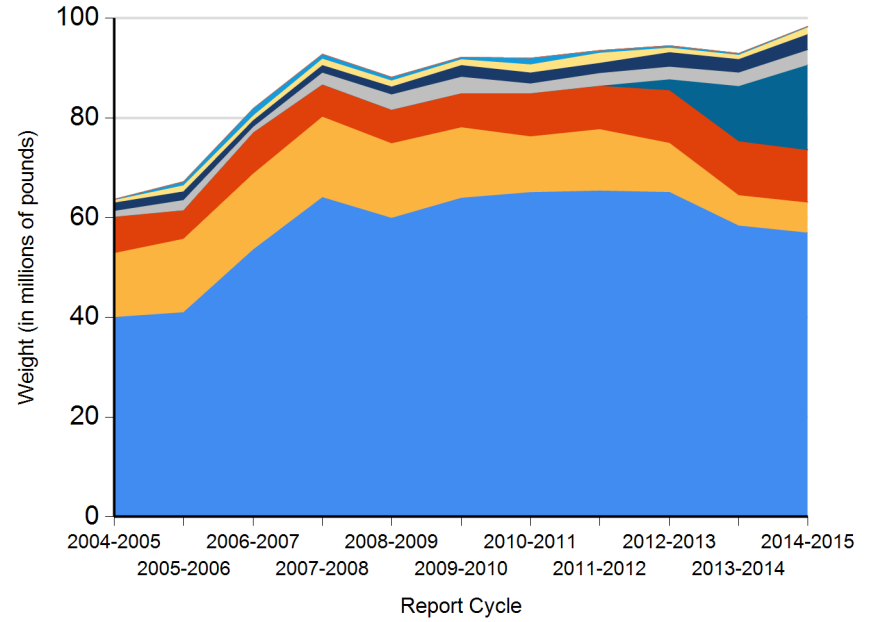


HHW Disposition By Disposition Method (City of Newport Beach)



- TRC
- Reused
- Destructive Incineration
- PaintCare
- Landfill
- Neutralization / Treatment
- Fuel Incineration
- Recycled

HHW Disposition By Disposition Method (Statewide)



- TRC
- Reused
- Destructive Incineration
- Stabilization
- Landfill
- Fuel Incineration
- Neutralization / Treatment
- PaintCare
- Recycled



DEPARTMENT OF RESOURCES RECYCLING AND RECOVERY

1001 I STREET, SACRAMENTO, CALIFORNIA 95814 • www.CalRecycle.ca.gov • (916) 322-4027
P.O. BOX 4025, SACRAMENTO, CALIFORNIA 95812

Name of Public Agency Reporting: City of Newport Beach

Contractor's Name: CR&R

Participating Households: 27,340 **Method:** Number of Addresses

Participating Households includes non-residential (CESQG,schools,nonprofits,etc.): No

Service Area Households: 45,072

Participants Represented by Reporting Jurisdiction/Agency (i.e., individual city(ies), county(ies), other agency(ies)):

Newport Beach

Program Types:

Program Type	EPAID	Program Type	EPAID	Program Type	EPAID	Program Type	EPAID
Recycle-only Facility	CAR000202937	Recycle-only Facility	CAL000469735	Recycle-only Facility	CAL000440451	Door to Door (residential) Program	CAH111001402



DEPARTMENT OF RESOURCES RECYCLING AND RECOVERY

1001 I STREET, SACRAMENTO, CALIFORNIA 95814 • www.CalRecycle.ca.gov • (916) 322-4027
 P.O. BOX 4025, SACRAMENTO, CALIFORNIA 95812

Collection (pounds)	Material Type	Permanent Facility	Temporary (periodic) Facility	Mobile Facility	Recycle-only Facility	Door to Door (residential) Program	Curbside Program	Load Check	Other
Flammable and Poison	Flammable solids / liquids								
	Bulked flammable liquids								
	Oil-based paints								
	Paint Related Material (PRM)					1,400			
	Poisons					800			
	Reactive and explosive								
	Compressed gas cylinders					40			
	1 lb propane canister								
Flammable and Poison subtotal						2,240			
PCB-containing	PCB-containing paint								
	Other PCB waste (includes ballasts)								
PCB-containing subtotal									
Reclaimable	Antifreeze								
	Auto type batteries (motor vehicles)								
	Latex paint					4,650			
	Motor oil/oil products								
	Used oil filters (recyclables only)								
Reclaimable subtotal						4,650			
Acid	Inorganic and organic acid					150			
Base	Inorganic and organic base					150			
Oxidizer	Neutral oxidizers, Organic peroxides, Oxidizing acid/base					40			
Asbestos	Asbestos								
Universal Waste (UW)*	Mercury containing automatic switches / thermometers / and novelties								
	Mercury containing thermostats								
	Mercury containing waste (other)								
	Lamps	1,143				380			
	Photovoltaic Modules								
	Other batteries	2,658				370			
	Aerosol cans					350			
	Rechargeable batteries								



DEPARTMENT OF RESOURCES RECYCLING AND RECOVERY

1001 I STREET, SACRAMENTO, CALIFORNIA 95814 • www.CalRecycle.ca.gov • (916) 322-4027
 P.O. BOX 4025, SACRAMENTO, CALIFORNIA 95812

Collection (pounds)	Material Type	Permanent Facility	Temporary (periodic) Facility	Mobile Facility	Recycle-only Facility	Door to Door (residential) Program	Curbside Program	Load Check	Other
Electronic Devices (UW)	Covered Electronic Devices	3,115				25,622			
	Other Electronic Devices	9,454				8,921			
	Electronic Devices (UW) subtotal	12,569				34,543			
	Universal Waste (UW)* + Electronic Devices (UW) subtotal	16,370				35,643			
Other	Home-generated sharps waste					940			
	Home-generated pharmaceutical waste								
	Treated wood								
	Other								
	Reuse Total								
	Other subtotal					940			
	Grand Total	16,370				43,813			



DEPARTMENT OF RESOURCES RECYCLING AND RECOVERY

1001 I STREET, SACRAMENTO, CALIFORNIA 95814 • www.CalRecycle.ca.gov • (916) 322-4027
 P.O. BOX 4025, SACRAMENTO, CALIFORNIA 95812

Disposition (pounds)	Material Type	Destructive Incineration	Fuel Incineration	Landfill	Neutralization / Treatment	Recycled	Reused	Stabilization	Steward
Flammable and Poison	Flammable solids / liquids								
	Bulked flammable liquids								
	Oil-based paints								
	Paint Related Material (PRM)		1,400						
	Poisons	800							
	Reactive and explosive								
	Compressed gas cylinders					40			
	1 lb propane canister								
	Flammable and Poison subtotal	800	1,400			40			
PCB-containing	PCB-containing paint								
	Other PCB waste (includes ballasts)								
	PCB-containing subtotal								
Reclaimable	Antifreeze								
	Auto type batteries (motor vehicles)								
	Latex paint					4,650			
	Motor oil/oil products								
	Used oil filters (recyclables only)								
	Reclaimable subtotal					4,650			
Acid	Inorganic and organic acid				150				
Base	Inorganic and organic base				150				
Oxidizer	Neutral oxidizers, Organic peroxides, Oxidizing acid/base	15			25				
Asbestos	Asbestos								
Universal Waste (UW)*	Mercury containing automatic switches / thermometers / and novelties								
	Mercury containing thermostats								
	Mercury containing waste (other)								
	Lamps					1,523			
	Photovoltaic Modules								
	Other batteries					3,028			
	Aerosol cans	350							
	Rechargeable batteries								



DEPARTMENT OF RESOURCES RECYCLING AND RECOVERY

1001 I STREET, SACRAMENTO, CALIFORNIA 95814 • www.CalRecycle.ca.gov • (916) 322-4027
 P.O. BOX 4025, SACRAMENTO, CALIFORNIA 95812

Disposition (pounds)	Material Type	Destructive Incineration	Fuel Incineration	Landfill	Neutralization / Treatment	Recycled	Reused	Stabilization	Steward
Electronic Devices (UW)	Covered Electronic Devices					28,737			
	Other Electronic Devices					18,375			
	Electronic Devices (UW) subtotal					47,112			
	Universal Waste (UW)* + Electronic Devices (UW) subtotal		350				51,663		
Other	Home-generated sharps waste	940							
	Home-generated pharmaceutical waste								
	Treated wood								
	Other								
	Reuse Total								
Other subtotal		940							
Grand Total		2,105	1,400		325	56,353			