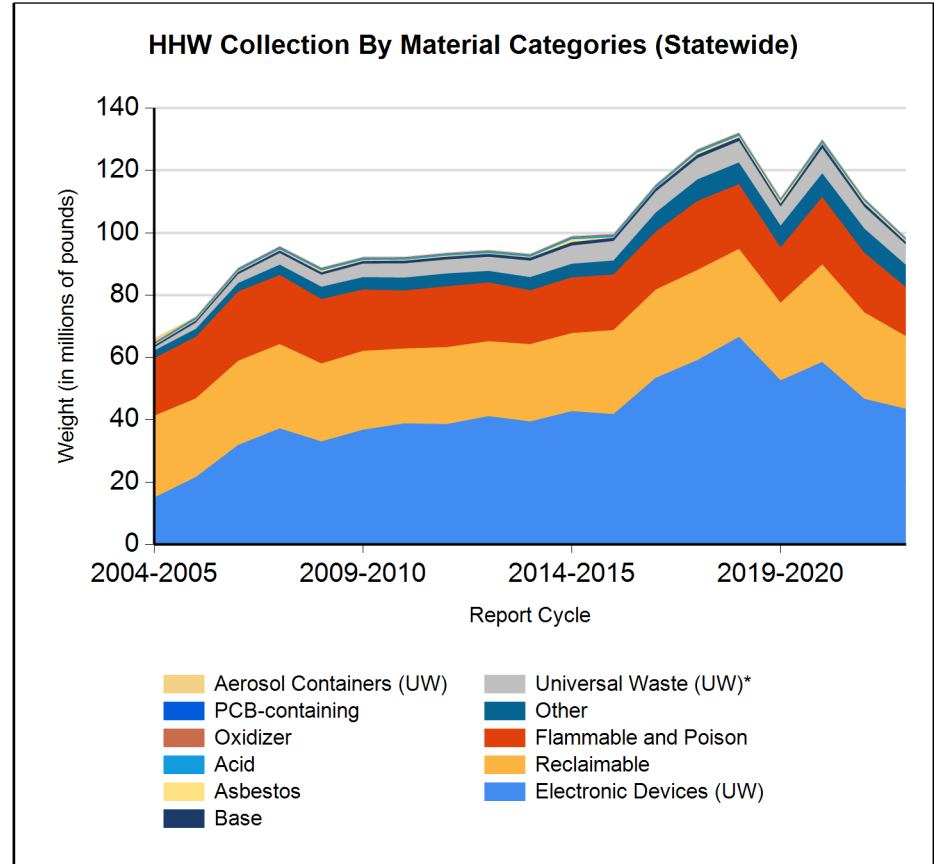
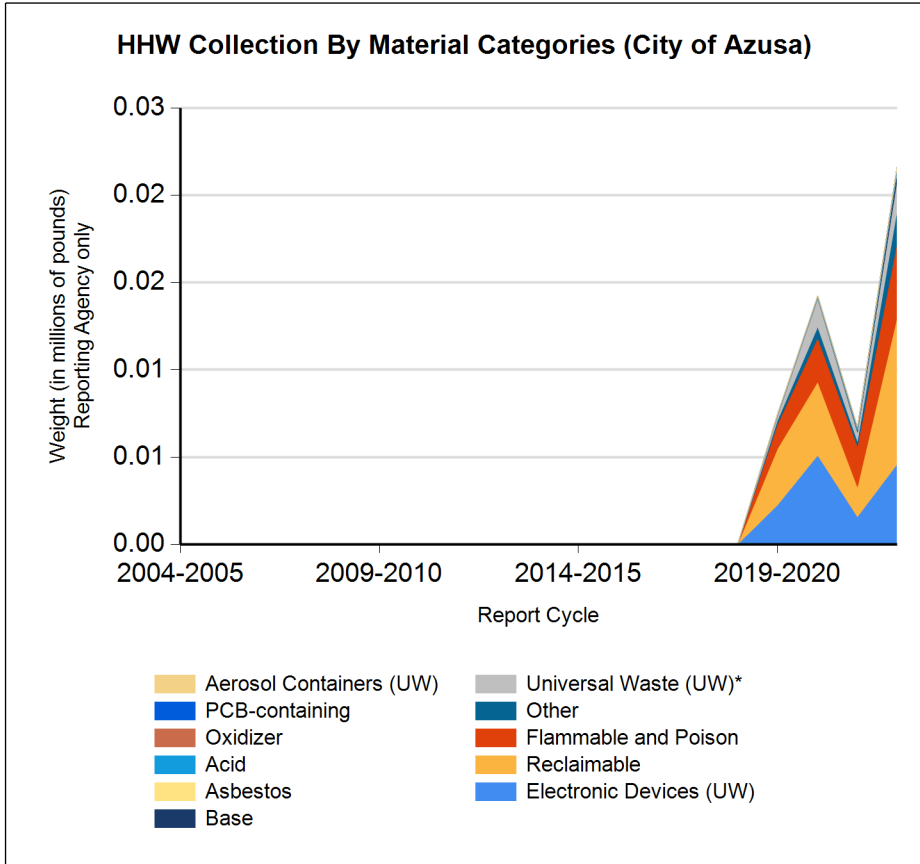


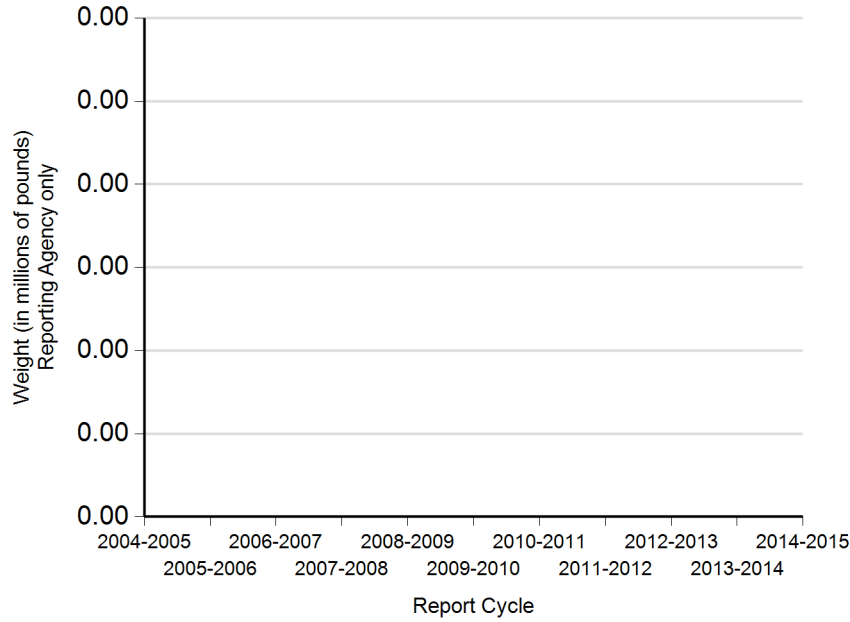


Form CalRecycle 303 Household Hazardous Waste Collection Information For 2022-2023



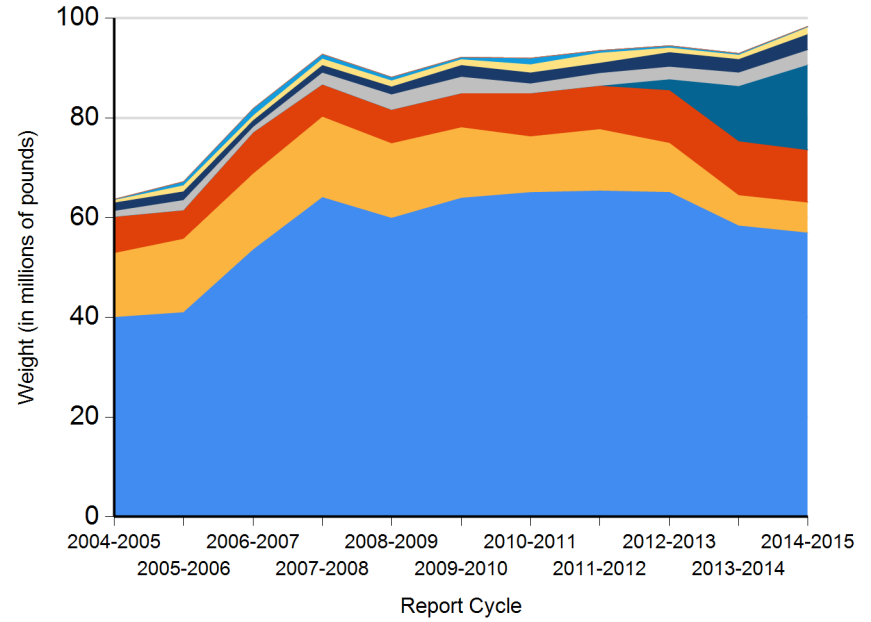


HHW Disposition By Disposition Method (City of Azusa)



- TRC
- PaintCare
- Stabilization
- Neutralization / Treatment
- Reused
- Landfill
- Fuel Incineration
- Destructive Incineration
- Recycled

HHW Disposition By Disposition Method (Statewide)



- TRC
- Stabilization
- Neutralization / Treatment
- Reused
- Landfill
- PaintCare
- Destructive Incineration
- Fuel Incineration
- Recycled



# DEPARTMENT OF RESOURCES RECYCLING AND RECOVERY

1001 I STREET, SACRAMENTO, CALIFORNIA 95814 • www.CalRecycle.ca.gov • (916) 322-4027  
P.O. BOX 4025, SACRAMENTO, CALIFORNIA 95812

**Name of Public Agency Reporting:** City of Azusa

**Contractor's Name:** Veolia NA

**Participating Households:** 156                      **Method:** Number of Vehicles

Participating Households includes non-residential (CESQG,schools,nonprofits,etc.): No

**Service Area Households:** 17,100

**Participants Represented by Reporting Jurisdiction/Agency (i.e., individual city(ies), county(ies), other agency(ies)):**

Azusa

**Program Types:**

<b>Program Type</b>	<b>EPAID</b>
Temporary (periodic) Facility	CAH111000625



DEPARTMENT OF RESOURCES RECYCLING AND RECOVERY

1001 I STREET, SACRAMENTO, CALIFORNIA 95814 • www.CalRecycle.ca.gov • (916) 322-4027  
 P.O. BOX 4025, SACRAMENTO, CALIFORNIA 95812

Collection (pounds)	Material Type	Permanent Facility	Temporary (periodic) Facility	Mobile Facility	Recycle-only Facility	Door to Door (residential) Program	Curbside Program	Load Check	Other
<b>Flammable and Poison</b>	Flammable solids / liquids		725						
	Bulked flammable liquids		1,200						
	Oil-based paints		1,350						
	Paint Related Material (PRM)								
	Poisons		975						
	Reactive and explosive								
	Compressed gas cylinders		29						
	1 lb propane canister								
<b>Flammable and Poison subtotal</b>			<b>4,279</b>						
<b>PCB-containing</b>	PCB-containing paint								
	Other PCB waste (includes ballasts)								
<b>PCB-containing subtotal</b>									
<b>Reclaimable</b>	Antifreeze		501						
	Auto type batteries (motor vehicles)		600						
	Latex paint		5,875						
	Motor oil/oil products		1,459						
	Used oil filters (recyclables only)								
<b>Reclaimable subtotal</b>			<b>8,435</b>						
<b>Acid</b>	Inorganic and organic acid		224						
<b>Base</b>	Inorganic and organic base		510						
<b>Oxidizer</b>	Neutral oxidizers, Organic peroxides, Oxidizing acid/base		38						
<b>Asbestos</b>	Asbestos								
<b>Universal Waste (UW)*</b>	Mercury containing automatic switches / thermometers / and novelties								
	Mercury containing thermostats								
	Mercury containing waste (other)								
	Lamps		240						
	Photovoltaic Modules								
	Other batteries		550						
	Aerosol cans		800						
	Rechargeable batteries		150						



DEPARTMENT OF RESOURCES RECYCLING AND RECOVERY

1001 I STREET, SACRAMENTO, CALIFORNIA 95814 • www.CalRecycle.ca.gov • (916) 322-4027  
 P.O. BOX 4025, SACRAMENTO, CALIFORNIA 95812

Collection (pounds)	Material Type	Permanent Facility	Temporary (periodic) Facility	Mobile Facility	Recycle-only Facility	Door to Door (residential) Program	Curbside Program	Load Check	Other
<b>Electronic Devices (UW)</b>	Covered Electronic Devices		1,640						
	Other Electronic Devices		2,958						
	<b>Electronic Devices (UW) subtotal</b>			<b>4,598</b>					
	<b>Universal Waste (UW)* + Electronic Devices (UW) subtotal</b>			<b>6,338</b>					
<b>Other</b>	Home-generated sharps waste		300						
	Home-generated pharmaceutical waste								
	Treated wood								
	NON-RCRA		1,548						
	Other								
	Reuse Total								
<b>Other subtotal</b>			<b>1,848</b>						
<b>Grand Total</b>			<b>21,672</b>						



DEPARTMENT OF RESOURCES RECYCLING AND RECOVERY

1001 I STREET, SACRAMENTO, CALIFORNIA 95814 • www.CalRecycle.ca.gov • (916) 322-4027  
 P.O. BOX 4025, SACRAMENTO, CALIFORNIA 95812

Disposition (pounds)	Material Type	Destructive Incineration	Fuel Incineration	Landfill	Neutralization / Treatment	Recycled	Reused	Stabilization	Steward
<b>Flammable and Poison</b>	Flammable solids / liquids	435	290						
	Bulked flammable liquids		1,200						
	Oil-based paints								1,350
	Paint Related Material (PRM)								
	Poisons	975							
	Reactive and explosive								
	Compressed gas cylinders	29							
	1 lb propane canister								
	<b>Flammable and Poison subtotal</b>	<b>1,439</b>	<b>1,490</b>						<b>1,350</b>
<b>PCB-containing</b>	PCB-containing paint								
	Other PCB waste (includes ballasts)								
	<b>PCB-containing subtotal</b>								
<b>Reclaimable</b>	Antifreeze			501					
	Auto type batteries (motor vehicles)					600			
	Latex paint								5,875
	Motor oil/oil products		1,459						
	Used oil filters (recyclables only)								
	<b>Reclaimable subtotal</b>		<b>1,459</b>	<b>501</b>		<b>600</b>			<b>5,875</b>
<b>Acid</b>	Inorganic and organic acid				224				
<b>Base</b>	Inorganic and organic base				510				
<b>Oxidizer</b>	Neutral oxidizers, Organic peroxides, Oxidizing acid/base	38							
<b>Asbestos</b>	Asbestos								
<b>Universal Waste (UW)*</b>	Mercury containing automatic switches / thermometers / and novelties								
	Mercury containing thermostats								
	Mercury containing waste (other)								
	Lamps					240			
	Photovoltaic Modules								
	Other batteries			550					
	Aerosol cans	320	480						
	Rechargeable batteries	38					113		



DEPARTMENT OF RESOURCES RECYCLING AND RECOVERY

1001 I STREET, SACRAMENTO, CALIFORNIA 95814 • www.CalRecycle.ca.gov • (916) 322-4027  
 P.O. BOX 4025, SACRAMENTO, CALIFORNIA 95812

Disposition (pounds)	Material Type	Destructive Incineration	Fuel Incineration	Landfill	Neutralization / Treatment	Recycled	Reused	Stabilization	Steward
<b>Electronic Devices (UW)</b>	Covered Electronic Devices					1,640			
	Other Electronic Devices					2,958			
	<b>Electronic Devices (UW) subtotal</b>					<b>4,598</b>			
	<b>Universal Waste (UW)* + Electronic Devices (UW) subtotal</b>		<b>358</b>	<b>480</b>	<b>550</b>		<b>4,951</b>		
<b>Other</b>	Home-generated sharps waste	300							
	Home-generated pharmaceutical waste								
	Treated wood								
	NON-RCRA	1,393				155			
	Other								
	Reuse Total								
<b>Other subtotal</b>		<b>1,693</b>				<b>155</b>			
<b>Grand Total</b>		<b>3,528</b>	<b>3,429</b>	<b>1,051</b>	<b>734</b>	<b>5,705</b>			<b>7,225</b>