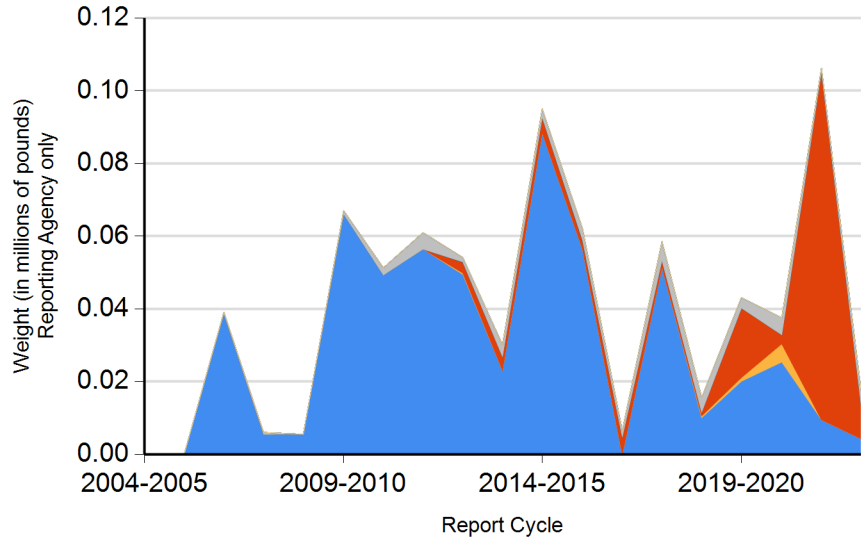




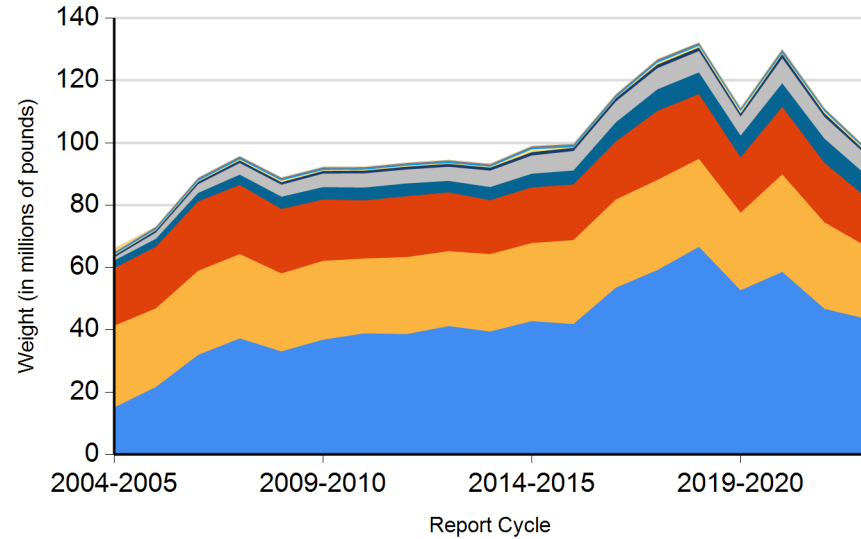
Form CalRecycle 303 Household Hazardous Waste Collection Information For 2022-2023

HHW Collection By Material Categories (City of Lakewood)



- Aerosol Containers (UW)
- PCB-containing
- Oxidizer
- Acid
- Asbestos
- Base
- Universal Waste (UW)\*
- Other
- Flammable and Poison
- Reclaimable
- Electronic Devices (UW)

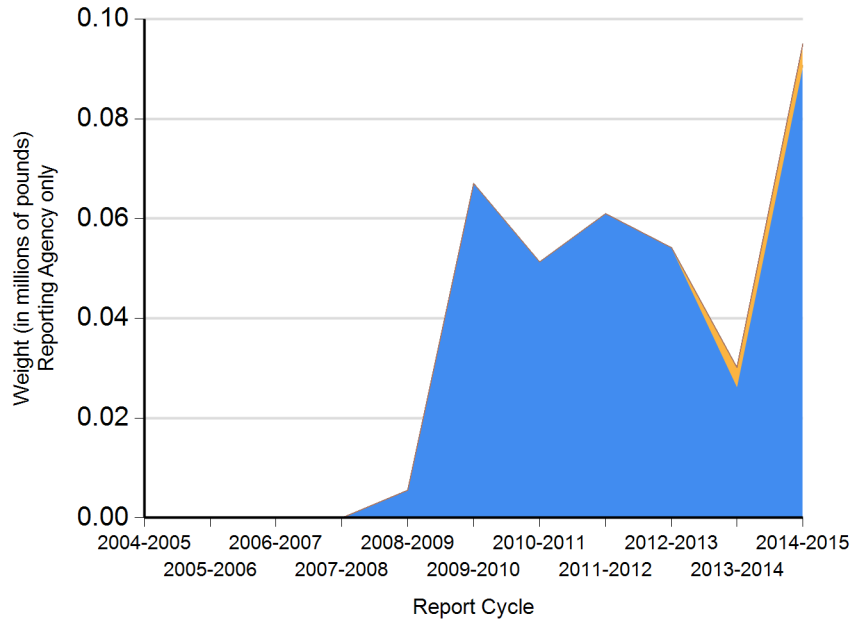
HHW Collection By Material Categories (Statewide)



- Aerosol Containers (UW)
- PCB-containing
- Oxidizer
- Acid
- Asbestos
- Base
- Universal Waste (UW)\*
- Other
- Flammable and Poison
- Reclaimable
- Electronic Devices (UW)

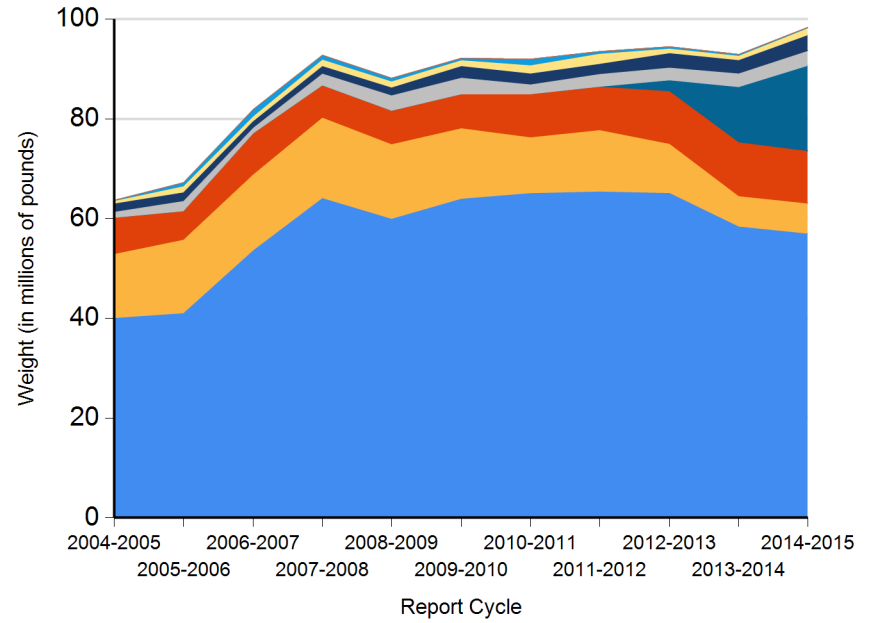


HHW Disposition By Disposition Method (City of Lakewood)



- TRC
- PaintCare
- Stabilization
- Reused
- Landfill
- Fuel Incineration
- Destructive Incineration
- Neutralization / Treatment
- Recycled

HHW Disposition By Disposition Method (Statewide)



- TRC
- Stabilization
- Neutralization / Treatment
- Reused
- Landfill
- PaintCare
- Destructive Incineration
- Fuel Incineration
- Recycled



# DEPARTMENT OF RESOURCES RECYCLING AND RECOVERY

1001 I STREET, SACRAMENTO, CALIFORNIA 95814 • www.CalRecycle.ca.gov • (916) 322-4027  
P.O. BOX 4025, SACRAMENTO, CALIFORNIA 95812

**Name of Public Agency Reporting:** City of Lakewood

**Contractor's Name:** Nicholls Consulting, Inc.

**Participating Households:** 27,975      **Method:** Number of Addresses

Participating Households includes non-residential (CESQG,schools,nonprofits,etc.): No

**Service Area Households:** 27,975

**Participants Represented by Reporting Jurisdiction/Agency (i.e., individual city(ies), county(ies), other agency(ies)):**

Lakewood

**Program Types:**

Program Type	EPAID	Program Type	EPAID	Program Type	EPAID
Curbside Program		Drop-off at City Hall (batteries only)		City Operations	



DEPARTMENT OF RESOURCES RECYCLING AND RECOVERY

1001 I STREET, SACRAMENTO, CALIFORNIA 95814 • www.CalRecycle.ca.gov • (916) 322-4027  
 P.O. BOX 4025, SACRAMENTO, CALIFORNIA 95812

Collection (pounds)	Material Type	Permanent Facility	Temporary (periodic) Facility	Mobile Facility	Recycle-only Facility	Door to Door (residential) Program	Curbside Program	Load Check	Other
<b>Flammable and Poison</b>	Flammable solids / liquids								9,270
	Bulked flammable liquids								
	Oil-based paints								
	Paint Related Material (PRM)								
	Poisons								
	Reactive and explosive								
	Compressed gas cylinders								
	1 lb propane canister								
<b>Flammable and Poison subtotal</b>									<b>9,270</b>
<b>PCB-containing</b>	PCB-containing paint								
	Other PCB waste (includes ballasts)								
<b>PCB-containing subtotal</b>									
<b>Reclaimable</b>	Antifreeze								
	Auto type batteries (motor vehicles)								
	Latex paint								
	Motor oil/oil products								
	Used oil filters (recyclables only)								
<b>Reclaimable subtotal</b>									
<b>Acid</b>	Inorganic and organic acid								
<b>Base</b>	Inorganic and organic base								
<b>Oxidizer</b>	Neutral oxidizers, Organic peroxides, Oxidizing acid/base								
<b>Asbestos</b>	Asbestos								
<b>Universal Waste (UW)*</b>	Mercury containing automatic switches / thermometers / and novelties								
	Mercury containing thermostats								
	Mercury containing waste (other)								
	Lamps								
	Photovoltaic Modules								
	Other batteries								3,816
	Aerosol cans								
	Rechargeable batteries								



DEPARTMENT OF RESOURCES RECYCLING AND RECOVERY

1001 I STREET, SACRAMENTO, CALIFORNIA 95814 • www.CalRecycle.ca.gov • (916) 322-4027  
 P.O. BOX 4025, SACRAMENTO, CALIFORNIA 95812

Collection (pounds)	Material Type	Permanent Facility	Temporary (periodic) Facility	Mobile Facility	Recycle-only Facility	Door to Door (residential) Program	Curbside Program	Load Check	Other
Electronic Devices (UW)	Covered Electronic Devices								
	Other Electronic Devices						4,235		
	<b>Electronic Devices (UW) subtotal</b>						<b>4,235</b>		
<b>Universal Waste (UW)* + Electronic Devices (UW) subtotal</b>							<b>4,235</b>		<b>3,816</b>
Other	Home-generated sharps waste								
	Home-generated pharmaceutical waste								
	Treated wood								
	Other								
	Reuse Total								
<b>Other subtotal</b>									
<b>Grand Total</b>							<b>4,235</b>		<b>13,086</b>



DEPARTMENT OF RESOURCES RECYCLING AND RECOVERY

1001 I STREET, SACRAMENTO, CALIFORNIA 95814 • www.CalRecycle.ca.gov • (916) 322-4027  
 P.O. BOX 4025, SACRAMENTO, CALIFORNIA 95812

Disposition (pounds)	Material Type	Destructive Incineration	Fuel Incineration	Landfill	Neutralization / Treatment	Recycled	Reused	Stabilization	Steward
<b>Flammable and Poison</b>	Flammable solids / liquids				9,270				
	Bulked flammable liquids								
	Oil-based paints								
	Paint Related Material (PRM)								
	Poisons								
	Reactive and explosive								
	Compressed gas cylinders								
	1 lb propane canister								
	<b>Flammable and Poison subtotal</b>				<b>9,270</b>				
<b>PCB-containing</b>	PCB-containing paint								
	Other PCB waste (includes ballasts)								
	<b>PCB-containing subtotal</b>								
<b>Reclaimable</b>	Antifreeze								
	Auto type batteries (motor vehicles)								
	Latex paint								
	Motor oil/oil products								
	Used oil filters (recyclables only)								
	<b>Reclaimable subtotal</b>								
<b>Acid</b>	Inorganic and organic acid								
<b>Base</b>	Inorganic and organic base								
<b>Oxidizer</b>	Neutral oxidizers, Organic peroxides, Oxidizing acid/base								
<b>Asbestos</b>	Asbestos								
<b>Universal Waste (UW)*</b>	Mercury containing automatic switches / thermometers / and novelties								
	Mercury containing thermostats								
	Mercury containing waste (other)								
	Lamps								
	Photovoltaic Modules								
	Other batteries					3,816			
	Aerosol cans								
	Rechargeable batteries								



DEPARTMENT OF RESOURCES RECYCLING AND RECOVERY

1001 I STREET, SACRAMENTO, CALIFORNIA 95814 • www.CalRecycle.ca.gov • (916) 322-4027  
 P.O. BOX 4025, SACRAMENTO, CALIFORNIA 95812

Disposition (pounds)	Material Type	Destructive Incineration	Fuel Incineration	Landfill	Neutralization / Treatment	Recycled	Reused	Stabilization	Steward
<b>Electronic Devices (UW)</b>	Covered Electronic Devices								
	Other Electronic Devices					4,235			
	<b>Electronic Devices (UW) subtotal</b>					<b>4,235</b>			
	<b>Universal Waste (UW)* + Electronic Devices (UW) subtotal</b>					<b>8,051</b>			
<b>Other</b>	Home-generated sharps waste								
	Home-generated pharmaceutical waste								
	Treated wood								
	Other								
	Reuse Total								
<b>Other subtotal</b>									
<b>Grand Total</b>					<b>9,270</b>	<b>8,051</b>			