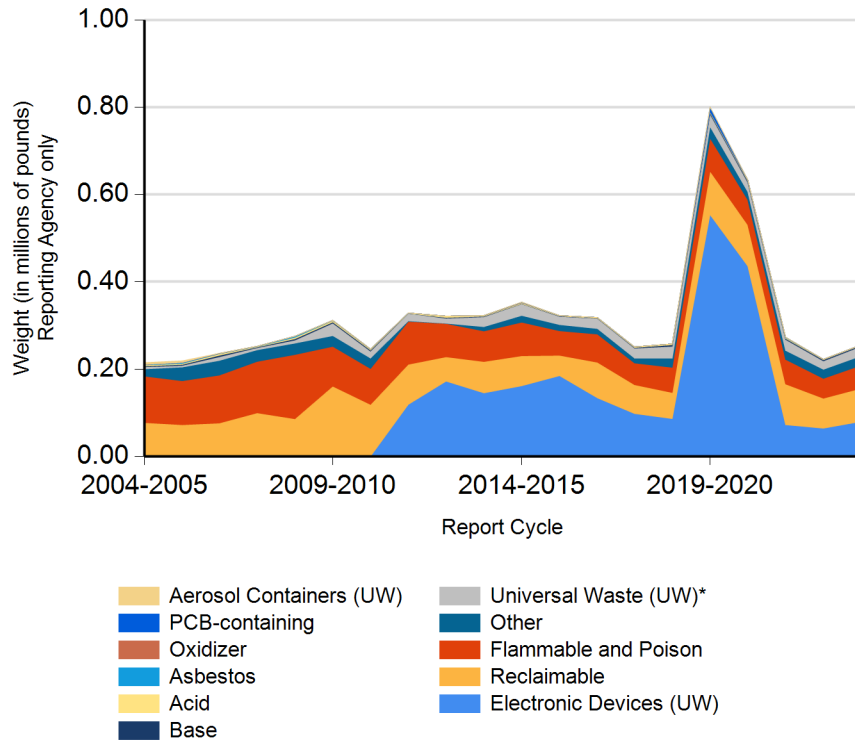


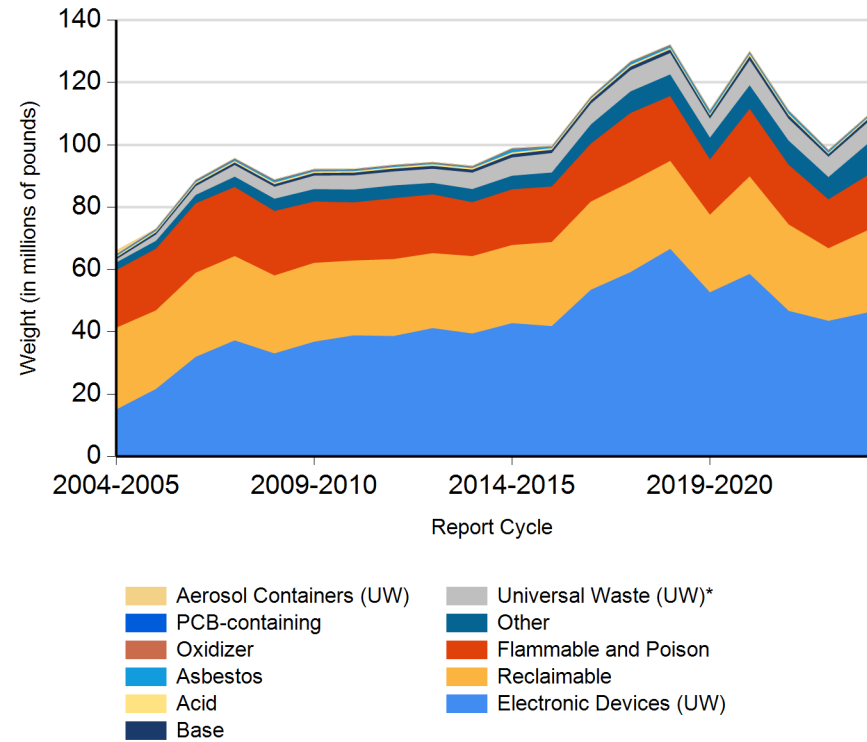


Form CalRecycle 303 Household Hazardous Waste Collection Information For 2023-2024

HHW Collection By Material Categories (City of Glendale)

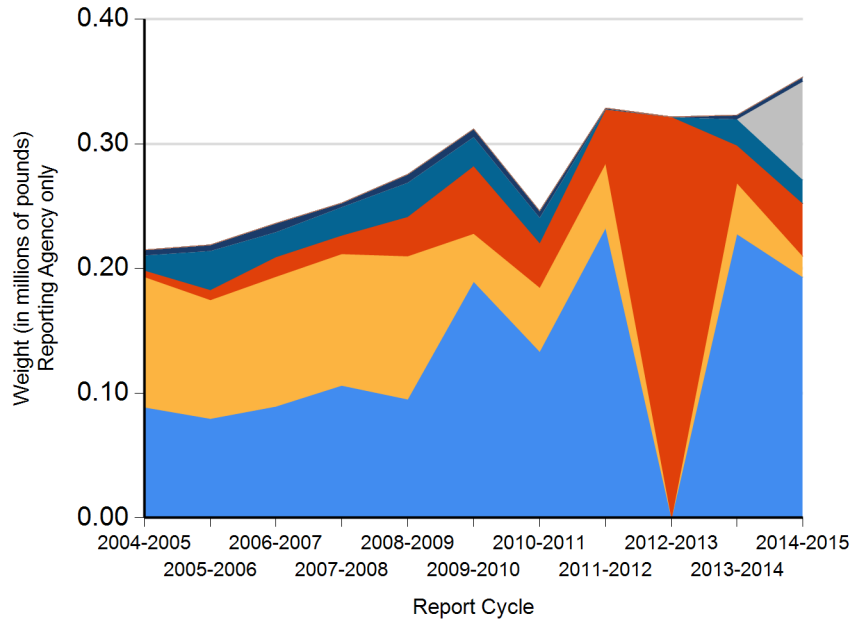


HHW Collection By Material Categories (Statewide)

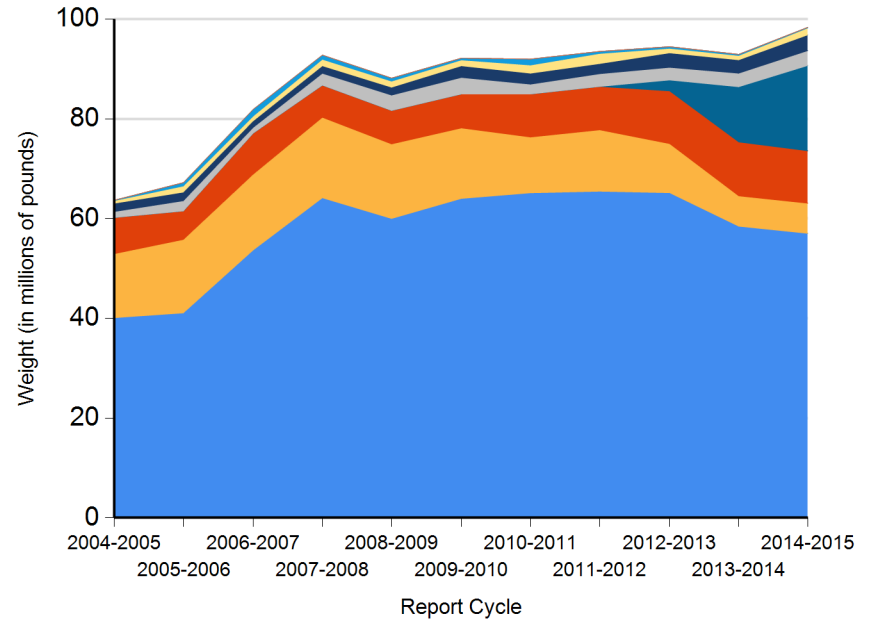




HHW Disposition By Disposition Method (City of Glendale)



HHW Disposition By Disposition Method (Statewide)





Name of Public Agency Reporting: City of Glendale

Contractor's Name: Dave Stimson

Participating Households: 4,973 **Method:** Number of Vehicles

Participating Households includes non-residential (CESQG,schools,nonprofits,etc.): Yes

Service Area Households: 348,000

Participants Represented by Reporting Jurisdiction/Agency (i.e., individual city(ies), county(ies), other agency(ies)):

Glendale La Canada Flintridge

Program Types:

Program Type	EPAID
Permanent Facility	CAH111000178



DEPARTMENT OF RESOURCES RECYCLING AND RECOVERY

1001 I STREET, SACRAMENTO, CALIFORNIA 95814 • www.CalRecycle.ca.gov • (916) 322-4027
P.O. BOX 4025, SACRAMENTO, CALIFORNIA 95812

Collection (pounds)	Material Type	Permanent Facility	Temporary (periodic) Facility	Mobile Facility	Recycle-only Facility	Door to Door (residential) Program	Curbside Program	Load Check	Other
Flammable and Poison	Flammable solids / liquids	32,050							
	Bulked flammable liquids								
	Oil-based paints	14,000							
	Paint Related Material (PRM)								
	Poisons	5,105							
	Reactive and explosive								
	Compressed gas cylinders	1,080							
	1 lb propane canister	555							
	Flammable and Poison subtotal	52,790							
PCB-containing	PCB-containing paint								
	Other PCB waste (includes ballasts)								
	PCB-containing subtotal								
Reclaimable	Antifreeze	260							
	Auto type batteries (motor vehicles)								
	Latex paint	75,800							
	Motor oil/oil products								
	Used oil filters (recyclables only)								
	Reclaimable subtotal	76,060							
Acid	Inorganic and organic acid	1,000							
Base	Inorganic and organic base	2,250							
Oxidizer	Neutral oxidizers, Organic peroxides, Oxidizing acid/base	200							
Asbestos	Asbestos								
Universal Waste (UW)*	Mercury containing automatic switches / thermometers / and novelties	20							
	Mercury containing thermostats								
	Mercury containing waste (other)								
	Lamps	3,071							
	Photovoltaic Modules								
	Other batteries	14,669							
	Aerosol cans	4,000							
	Rechargeable batteries	100							



DEPARTMENT OF RESOURCES RECYCLING AND RECOVERY

1001 I STREET, SACRAMENTO, CALIFORNIA 95814 • www.CalRecycle.ca.gov • (916) 322-4027
P.O. BOX 4025, SACRAMENTO, CALIFORNIA 95812

Collection (pounds)	Material Type	Permanent Facility	Temporary (periodic) Facility	Mobile Facility	Recycle-only Facility	Door to Door (residential) Program	Curbside Program	Load Check	Other
Electronic Devices (UW)	Covered Electronic Devices	52,473							
	Other Electronic Devices	27,400							
	Electronic Devices (UW) subtotal	79,873							
	Universal Waste (UW)* + Electronic Devices (UW) subtotal	101,733							
Other	Home-generated sharps waste	2,298							
	Home-generated pharmaceutical waste								
	Treated wood								
	Non RCRA Liquid/Solid	19,330							
	Other								
	Reuse Total								
	Other subtotal	21,628							
	Grand Total	255,661							



DEPARTMENT OF RESOURCES RECYCLING AND RECOVERY

1001 I STREET, SACRAMENTO, CALIFORNIA 95814 • www.CalRecycle.ca.gov • (916) 322-4027
P.O. BOX 4025, SACRAMENTO, CALIFORNIA 95812

Disposition (pounds)	Material Type	Destructive Incineration	Fuel Incineration	Landfill	Neutralization / Treatment	Recycled	Reused	Stabilization	Steward
Flammable and Poison	Flammable solids / liquids	32,050							
	Bulked flammable liquids								
	Oil-based paints								14,000
	Paint Related Material (PRM)								
	Poisons	5,105							
	Reactive and explosive								
	Compressed gas cylinders	1,080							
	1 lb propane canister					555			
	Flammable and Poison subtotal	38,235				555			14,000
PCB-containing	PCB-containing paint								
	Other PCB waste (includes ballasts)								
	PCB-containing subtotal								
Reclaimable	Antifreeze					260			
	Auto type batteries (motor vehicles)								
	Latex paint								75,800
	Motor oil/oil products								
	Used oil filters (recyclables only)								
	Reclaimable subtotal					260			75,800
Acid	Inorganic and organic acid	1,000							
Base	Inorganic and organic base	2,250							
Oxidizer	Neutral oxidizers, Organic peroxides, Oxidizing acid/base	200							
Asbestos	Asbestos								
Universal Waste (UW)*	Mercury containing automatic switches / thermometers / and novelties	20							
	Mercury containing thermostats								
	Mercury containing waste (other)								
	Lamps					3,071			
	Photovoltaic Modules								
	Other batteries					14,699			
	Aerosol cans	4,000							
	Rechargeable batteries					100			



DEPARTMENT OF RESOURCES RECYCLING AND RECOVERY

1001 I STREET, SACRAMENTO, CALIFORNIA 95814 • www.CalRecycle.ca.gov • (916) 322-4027
P.O. BOX 4025, SACRAMENTO, CALIFORNIA 95812

Disposition (pounds)	Material Type	Destructive Incineration	Fuel Incineration	Landfill	Neutralization / Treatment	Recycled	Reused	Stabilization	Steward
Electronic Devices (UW)	Covered Electronic Devices					52,473			
	Other Electronic Devices					27,400			
	Electronic Devices (UW) subtotal					79,873			
	Universal Waste (UW)* + Electronic Devices (UW) subtotal	4,020				97,743			
Other	Home-generated sharps waste	2,298							
	Home-generated pharmaceutical waste								
	Treated wood								
	Non RCRA Liquid/Solid	19,330							
	Other								
	Reuse Total								
	Other subtotal	21,628							
	Grand Total	67,333				98,558			89,800