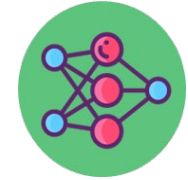


Dealer Cooperatives: Basic Overview



Tasked with Regulation and Oversight

- Develop regulations
- May provide sample Dealer Cooperative Redemption Plan by Jan 1, 2024
- Approve Dealer Cooperative Redemption Plans
- Ensure compliance

Beverage Containers

- Beer and malt beverages
- Carbonated water, soda, soft drinks
- Noncarbonated water, soft drinks, sport drinks
- Fruit drinks
- Coffee and tea
- Vegetable juice
- Wine and distilled spirits (**NEW!**)

Product Stewardship Programs

- Environmental policy approach that holds businesses responsible for product or packaging management through its lifecycle
- Businesses can work together through a non-profit organization to comply, or may comply individually

Dealer Cooperatives

- Non-profit stewardship organization (IRC 501(c)(3)) formed to provide CRV redemption opportunities, and create a Redemption Plan
- Dealers voluntarily join as members of the Dealer Cooperative as one possible pathway to meet their redemption obligations