

# Responsible Textile Recovery Act

## Needs Assessment Informational Workshop

April 7, 2026

California Department of  
Resources Recycling and Recovery

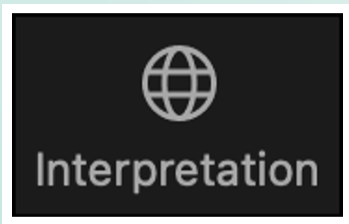
**CalRecycle** 



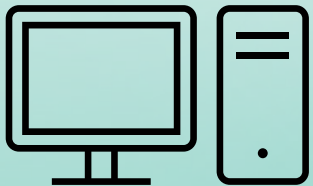
# Interpretation Services | Servicios de Interpretación



**In Person – Ask our team for a translation headset**  
**En persona – Solicite asistencia si necesita audífonos de traducción**



**Zoom – Select your language on the Interpretation icon**  
**Zoom - Seleccione su idioma en el icono Interpretación**



**Webcast - <https://video.calepa.ca.gov/#/>**  
**Transmisión en línea - <https://video.calepa.ca.gov/#/>**

# Disclaimer

*This communication is neither intended to, nor does it constitute definitive legal counseling, conclusions, or advice in any way. Instead, the contents of this communication and any analysis, guidance, or other information is intended to objectively address the question(s) presented based on the current existing, known facts and legal authority as described to and understood by the author and/or CalRecycle at the time of this communication. Please be advised that any relevant facts or legal authority or authorities that are undisclosed or unknown at the time of this communication may affect or alter any analysis, guidance, or other information herein. Please be further advised that any analysis, guidance, or other information herein may be subject to change and/or correction based on changed facts or legal authority, actual or understood, subsequent to the time of this communication. No analysis, guidance, or other information herein should be construed as a waiver of any rights or remedies available to CalRecycle. Recipients of this communication are encouraged to seek the assistance of legal counsel to comply with applicable state law based on current facts and circumstances.*

# Agenda

---

## **Opening Remarks**

Linnea Whitney Skierski, Deputy Director  
Office of Policy Development and Analysis

## **Statutory Overview of the Needs Assessment**

Ken Pereira, Senior Environmental Scientist  
Product Stewardship Branch

## **Landbell USA Introduction**

Patrick Gibbs, Executive Director  
Landbell USA

# **Statutory Overview of the Needs Assessment**

---

**Department of Resources Recycling and Recovery  
Product Stewardship Branch**

---

**Ken Pereira**  
*Senior Environmental Scientist*

# Purpose of the Needs Assessment

Needs assessments are an essential tool for identifying gaps between current conditions and desired outcomes. The assessment must:

- Determine the steps and investments needed to achieve the requirements of the Act.
- Inform the producer responsibility plan and budget.



See PRC sections 42984.6(a)(1) and (b)(1)

# PRO Responsibilities

The PRO is responsible for preparing one or more statewide needs assessments directly or through a third-party contractor, including:

- Covering needs assessment costs.
- Consulting with interested parties.
- Submitting initial needs assessment(s) to CalRecycle by March 1, 2027.
- Updating the needs assessment every five years or as necessary.



See PRC section 42984.6(a) - (c)

# CalRecycle Responsibilities

CalRecycle is responsible for guiding the development of the needs assessments, including:

- Consulting with the PRO.
- Reviewing the needs assessment.
- Approving, conditionally approving, or disapproving the needs assessment within 90 days of submission or by June 1, 2027.



See PRC sections 42984.6(a)(4), (a)(5), and (c)

# Consultation Requirements

The PRO must consult with:

- CalRecycle
- Local jurisdictions
- Recycling service providers
- Processors
- Others that reflect different needs and challenges of managing covered products



See PRC sections 42984.6(a)(4) and (c)

# Covered Product Scope and Scale

The needs assessment must evaluate types, material composition, and volumes of:

- Covered products currently being landfilled and
- Covered products currently being diverted to reuse, repair, or recycling.

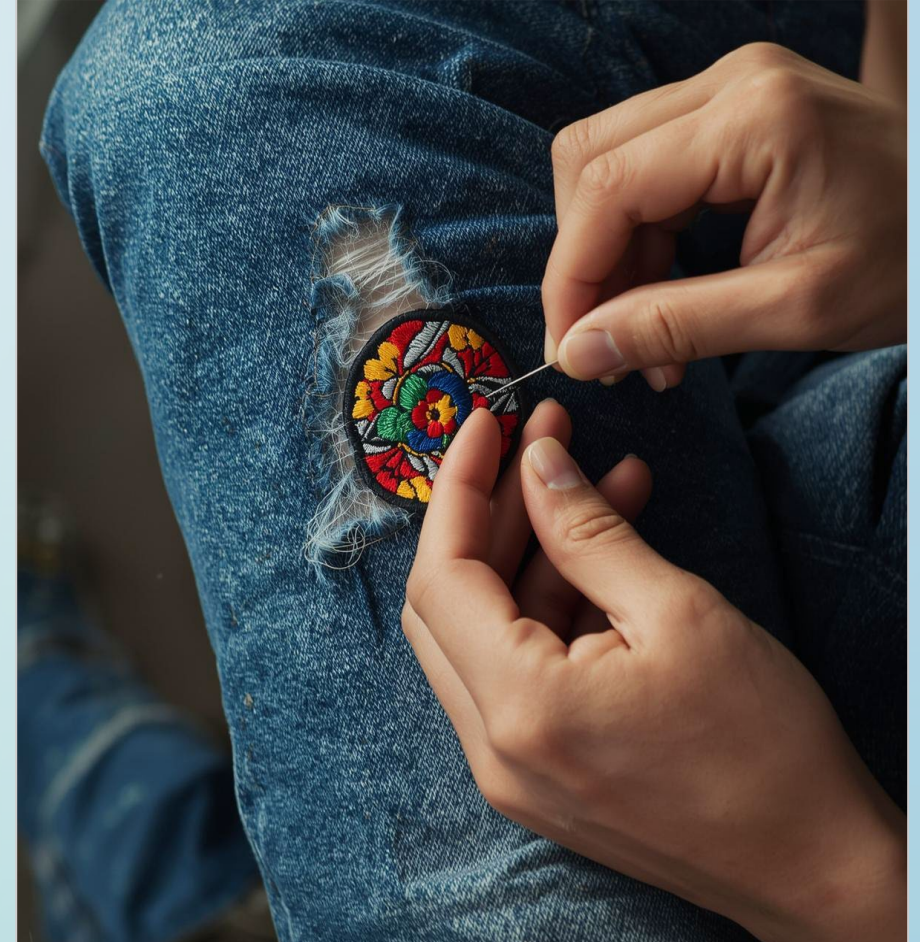


See PRC sections 42984.6(b)(2)(A)

# Infrastructure and End Markets

The needs assessment must evaluate:

- Current repair, reuse, recycling, collection, sorting, disassembly, and hauling systems and necessary expansions.
- Current market conditions, availability or lack of availability of responsible end markets, and need to create end markets.
- Actions and investments needed to provide access to collection, recycling, composting, processing, and transportation to end markets.



See PRC sections 42984.6(b)(2)(B), (C), (I), and (J)

# Incentives and Investments

The needs assessment must evaluate:

- Existing statutes and funding sources related to market development and financial incentives.
- Necessary funding and incentive mechanisms.
- Need to incentivize reused products or recycled material market development.
- Actions and investments needed to ensure covered products are reused or recycled and have sufficient responsible end markets.



See PRC sections 42984.6(b)(2)(D), (G), and (J)

# Eco-modulated Fees



The needs assessment must evaluate:

- Fee reduction or redistribution mechanisms, which may consider existing producer collection, repair, reuse, and recycling programs.
- Important factors to implement the eco-modulated fee structure and associated data collection needs.

See PRC sections 42984.6(b)(2)(H) and (M)

# Consumer Education

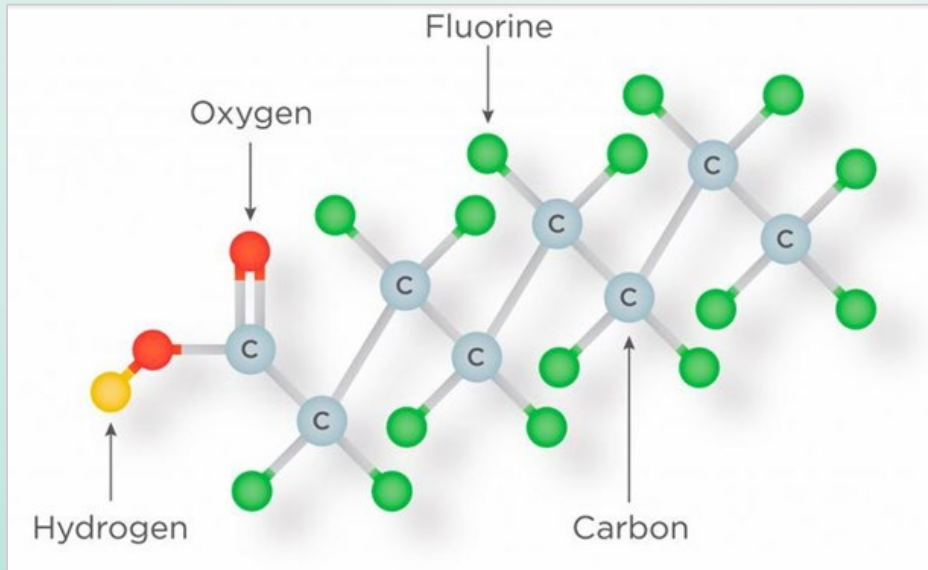


The needs assessment must evaluate:

- Consumer education needs and methods to reach consumers.
- Consumer behaviors to drive repair, reuse, and recycling.

See PRC sections 42984.6(b)(2)(E) and (F)

# Chemical Contamination



The needs assessment must evaluate:

- Perfluoroalkyl and polyfluoroalkyl substances (PFAS) and other regulated chemicals in covered products.
- Actions and investments needed to avoid contamination related to recycling products containing PFAS.

See PRC section 42984.6(b)(2)(K)

# Needs Assessment Timeline

**March 2026 –  
March 2027**

- CalRecycle approved Landbell USA
- PRO conducts initial needs assessment



**March 2027**

PRO submits initial needs assessment to CalRecycle for review



**June 2027**

CalRecycle approves, conditionally approves, or disapproves the initial needs assessment

# Implementation Timeline

2026

**January:**  
Producers form  
PRO(s)

**March:**  
CalRecycle  
approved Landbell  
USA as PRO

**July:**  
Producers join  
approved PRO

2028

**March:**  
PRO submits  
initial needs  
assessment

**June:**  
CalRecycle  
approves,  
conditionally  
approves,  
or disapproves  
needs assessment

2030

**July:**  
PRO must  
have  
approved  
plan

2031

PRO fully  
implements  
plan

# Landbell USA Introduction

---



**Patrick Gibbs**  
**Executive Director**  
**Landbell USA**

# Landbell USA History

- Part of Landbell Group
- Founded in Mainz, Germany in 1995
- Supporting companies and organizations throughout the world with Environmental and Chemical Compliance Solutions
- Involved in policy & advocacy on waste management, circular economy & EPR
- Managing 43 PROs for multiple waste streams including E-Waste, Batteries, Packaging, and Textiles
- Textiles PRO in the Netherlands
- Blue Box Packaging PRO in Ontario for packaging management



# Landbell USA Will Outsource the Needs Assessment

- Preliminary discussions are in progress.
- Encourage interested, fit parties to contact Landbell USA.



# Needs Assessment Timeline Milestones

- CalRecycle Needs Assessment Meeting April 7 - Understand/Deploy Directives
- RFQ - Expression of Interest Letter - April 8
- RFQ - Finalize & Launch to Interested Contractors - April 15
- RFQ - Review & Scoring of Responses Due - May 13
- RFQ - Approve & Contact Selected Contractor(s) - June 3
- RFQ - Contract signed - June 24
- Launch Needs Assessment - July 1



# Needs Assessment Stakeholder Team Engagement

## Board and advisory committee engagement

- Consult and align needs assessment plan/progress with our board, advisory team, and various interest groups through contractor selection and deployment process to ensure success.



# Landbell USA Encourages Comments and Suggestions

- Incorporating a holistic and efficient needs assessment operation.
- Reflecting operational realities of current available data, textile collection, sortation, hauling, repair, resale, recycling, and processing infrastructure and systems.
- Cataloging downstream local and global flow of textile material markets.
- Understanding current capabilities, capacity, expansion potential, and challenges of current textile systems and stakeholder operations.
- Tracking, validating, and reporting comprehensive textile material system flows.
- Deploying efficient system scaling mechanisms and understanding cost implications.
- Driving successful regulatory compliance.
- General alignment on best practices.



# Producer Registration and Contacting Landbell USA

## Producer Registration Portal is Live

- Landbell USA has initiated identification of producers

## Potential Needs Assessment Contractors and Various Interested Stakeholders May Contact Landbell USA:

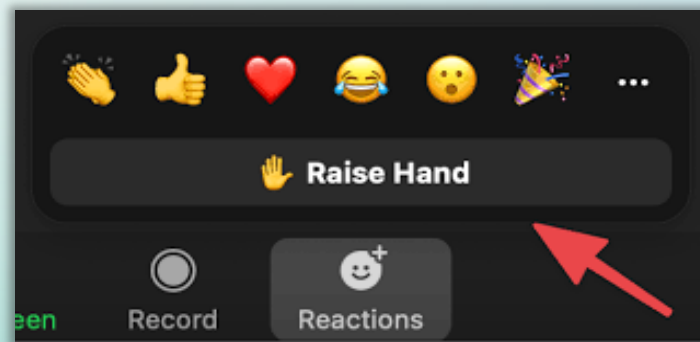
- [Landbellusa.support@landbellgroup.com](mailto:Landbellusa.support@landbellgroup.com)



# Questions and Comments

To make a comment in-person, please line up at the podium.

To make an oral comment via Zoom, please raise your hand and the host will unmute you.

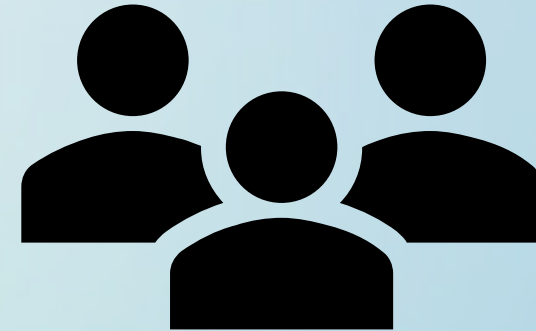


# Save the Date: Regulatory Concepts Workshop

August 13, 2026, at 10:00 AM

1001 I Street, Sacramento  
Byron Sher Auditorium (2nd Floor)

- [Zoom](#)
- [Webcast](#)





## Ways to stay informed



Sign-up for Email Updates: [Textile Stewardship GovDelivery](#)



Textile Stewardship Webpage: <https://calrecycle.ca.gov/epr/textiles>



Questions about textile stewardship: [Textiles@CalRecycle.ca.gov](mailto:Textiles@CalRecycle.ca.gov)