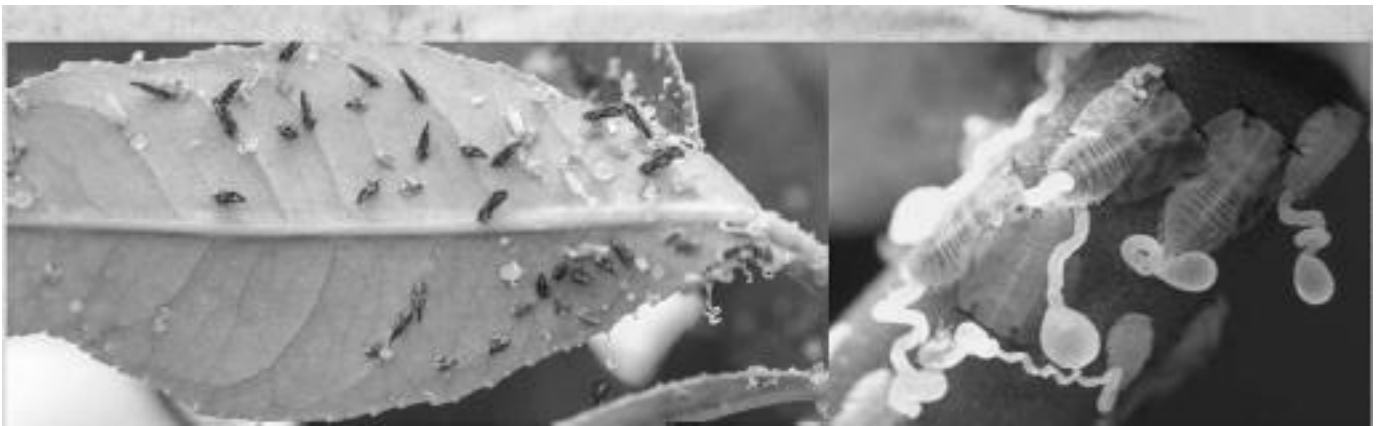


Wanted Dead

The Asian Citrus Psyllid



Adults are about the size of an aphid and have brownish, mottled wings. They feed with their head down and their "tail" in the air.



Nymphs are tiny and yellowish and excrete white, waxy tubules.



They cause yellowing in leaves, incomplete color change and small, misshapen, bitter fruit.

Do Not Spread This Pest!

The Asian citrus psyllid is devastating the commercial citrus industry all over the globe. This bug spreads a disease called Citrus Greening or Huanglongbing (HLB), for which there is no cure. The disease makes the fruit lopsided and bitter, and kills citrus trees in as little as five years. The psyllid and disease can spread rapidly, especially if infested plants or cuttings are moved. It is especially critical to ensure that citrus trees with the greening disease are not used as mulch. If you see diseased citrus pruning's, be safe, not sorry. Send these materials to composting or to biomass power production, but never to mulch, or direct application to farmland. If you find the infested materials containing psyllid in any life stage, cover them at once and contact your agriculture commissioner's office or call the California Department of Food & Agriculture Exotic Pest Hotline (800-491-1899).