



# 2021 Beverage Container Recycling in California

## Beverage Container Recycling Rates

$$\left( \text{Beverage Container Recycling Rate} \right) = \left( \text{Number of Beverage Containers returned} \right) \div \left( \text{Number of Beverage Containers Sold in CA} \right)$$

The BCRP Recycling rate goal is 80%

**68%**  
Recycling Rate



**18.6 Billion**  
Bottles and Cans Returned



**27.4 Billion**  
Beverages Sold

## Recycling Rates by Container Material Type



**73%**  
Aluminum



**64%**  
Glass



**66%**  
#1 PET



**53%**  
#2 HDPE



**1%**  
#3 PVC

**Sales:**  
10.2 Billion  
**Returns:**  
7,421.18 Million

**Sales:**  
3 Billion  
**Returns:**  
1,923.23 Million

**Sales:**  
13.7 Billion  
**Returns:**  
9.09845 Billion

**Sales:**  
186.89 Million  
**Returns:**  
99.85 Million

**Sales:**  
0.27 Million  
**Returns:**  
0.00 Million



**4%**  
#4 LDPE



**25%**  
#5 PP



**20%**  
#6 PS



**6%**  
#7 Other



**9%**  
Bimetal

**Sales:**  
6.02 Million  
**Returns:**  
0.21 Million

**Sales:**  
5.33 Million  
**Returns:**  
1.35 Million

**Sales:**  
202.78 Million  
**Returns:**  
39.88 Million

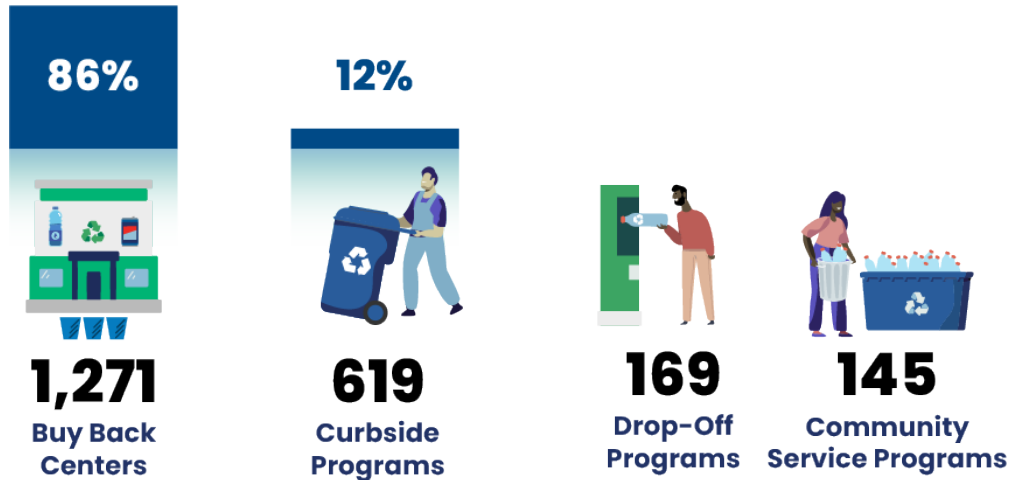
**Sales:**  
42.9 Million  
**Returns:**  
2.71 Million

**Sales:**  
54.76 Million  
**Returns:**  
4.96 Million



# Program Participants

## CRV Recycling Collection Distribution



## Other Program Participants



## Rates paid for Containers Per Pound at Recycling Centers

Recycling centers may issue the CRV refund by weight when consumers redeem more than 50 containers of a material type.

CalRecycle calculates the number of containers per pound to ensure refund value by weight equals the value by container (5 or 10 cents).

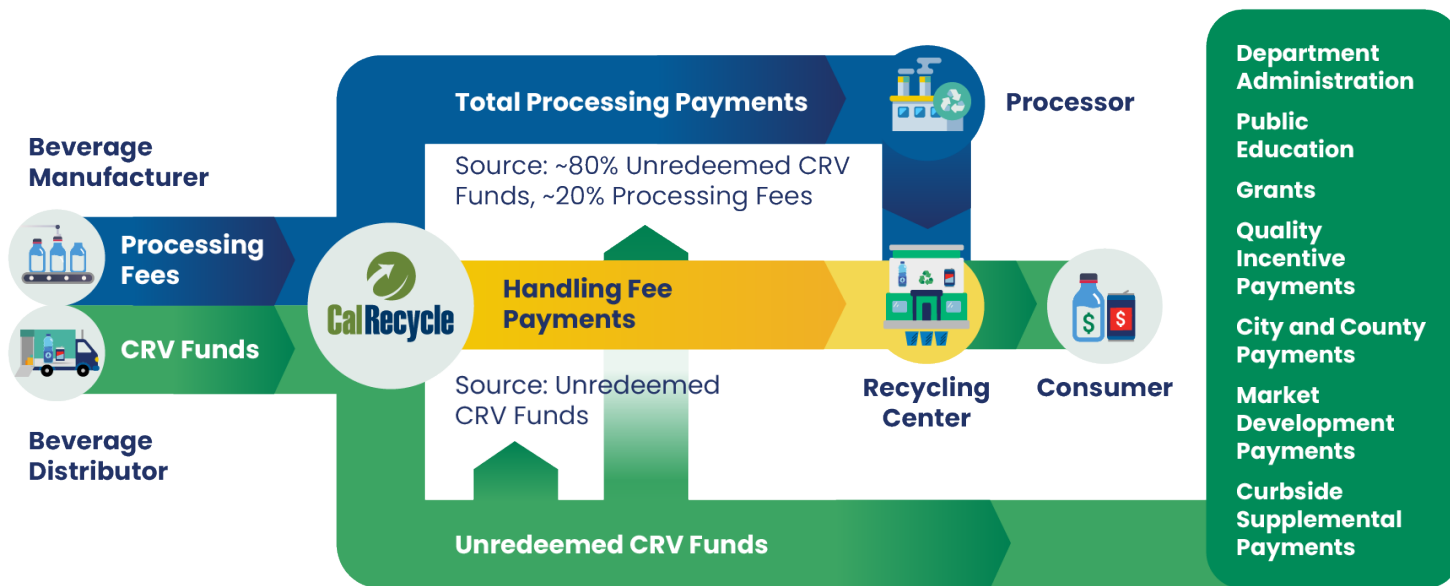
The per pound rate fluctuates with changes in the amount of material manufacturers use in each container.

Material Type	# of Containers per Pound	Refund Value per Pound
Aluminum	30.2	\$1.65
Glass	2.01	\$0.105
#1 PET	24.4	\$1.33
#2 HDPE	7.3	\$0.58
#3 PVC	9.7	\$0.48
#4 LDPE	41.1	\$2.05
#5 PP	10.8	\$0.54
#6 PS	110.1	\$5.51
#7 Other	3.1	\$0.31
Bimetal	7.6	\$0.38



# Flow of Funds to Support Program Operation

Beverage Container Recycling Program funds pay to run the program, subsidize recycling businesses, and expand redemption and demand for recycled materials.



## Processing Payments and Fees

Beverage manufacturers' processing fees help pay processors for the cost to recycle materials whose scrap value doesn't cover costs.

The processing payments CalRecycle makes to processors fluctuate with the market value of materials.

## 2021 Processing Payments to Businesses

# \$179.6 M

## How Processing Fees and Payments Are Calculated

(Jan. 1, 2022)

Processing payments and fees are paid for materials that cost more to recycle than scrap value is worth.

Processing payments equal the difference between scrap value per ton and cost per ton.

A formula in the law dictates processing fees.

Material Type	Scrap Value per Ton	Cost per Ton **	PP per Ton	PF per Container
Aluminum	\$1,458.51*	\$598.82	N/A	N/A
Glass	\$-7.25	\$158.07	\$165.32	\$0.00426
#1 PET	\$250.43	\$516.01	\$265.58	\$0.00045
#2 HDPE	\$408.13	\$1,023.40	\$615.27	\$0.00574
#3 PVC	\$0.01	\$1,609.74	\$1,609.73	\$0.05393
#4 LDPE	\$0.27	\$2,296.44	\$2,296.17	\$0.01794
#5 PP	\$11.40	\$2,060.21	\$2,048.81	\$0.06109
#6 PS	\$9.60	\$1,276.12	\$1,266.52	\$0.00385
#7 Other	\$2.92	\$1,398.20	\$1,395.28	\$0.14628
Bimetal	\$0.91	\$1,290.00	\$1,289.09	\$0.05371

## Processing Payments and Fees Calendar Year 2021 (Millions)

Recycling centers may issue the CRV refund by weight when consumers redeem more than 50 containers of a material type.

CalRecycle calculates the number of containers per pound to ensure refund value by weight equals the value by container (5 or 10 cents).

The per pound rate fluctuates with changes in the amount of material manufacturers use in each container.

Material Type	Processing Payments Paid	Processing Fees Paid
Glass	\$77.874	\$13.040
#1 PET	\$94.631	\$16.774
#2 HDPE	\$5.797	\$1.633
#3 PVC	\$0.000	\$0.001
#4 LDPE	\$0.005	\$0.262
#5 PP	\$0.131	\$0.777
#6 PS	\$0.225	\$1.042
#7 Other	\$0.587	\$2.730
Bimetal	\$0.388	\$3.428
<b>Total</b>	<b>\$179.638</b>	<b>\$39.686</b>

Source: Division of Recycling Integrated Information System

## 2021 Handling Fees

# \$49.3 M

## Handling Fees

CalRecycle pays handling fees to help supermarket, nonprofit, and rural recycling center businesses operate in high-cost locations, giving consumers convenient places to recycle bottles and cans.

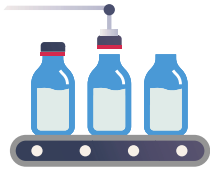
## All Beverage Container Recycling Program Payments for 2021

CalRecycle makes different payments to expand redemption sites, educate communities and increase the amount of materials actually recycled into new products.

<b>1,271 Recycling Centers</b>	Processing Payments	\$134,614,000
	Administrative Fees	\$6,585,000
	Handling Fees	\$49,316,000
	Pilot Project Recycler Grants	\$1,361,000
<b>619 Curbside Programs</b>	Processing Payments	\$37,194,000
	Administrative Fees	\$925,000
	Curbside Supplemental Payments	\$15,000,000
<b>614 Dropoff, Collection, and Community Service Programs</b>	Processing Payments	\$7,821,000
<b>160 Certified Processors</b>	Administrative Fees	\$22,444,000
<b>400 Local Governments</b>	City and County Payments	\$9,569,000
<b>14 Local Community Conservation Corps</b>	Local Conservation Corps Grants	\$8,123,000
<b>30 Glass Beneficiators</b>	Quality Incentive Payments	\$8,045,000
<b>25 Plastic Reclaimers and Plastic Product manufacturers</b>	Plastic Market Development Payments	\$10,000,000
<b>16 Competitive Grantees</b>	Beverage Container Recycling Grants	\$1,723,000

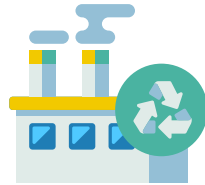


# Enforcement Actions and Inspections During 2021



## Beverage Container Manufacturers and Distributors

Compliance Audits Completed: 61  
Audit Findings: \$ 1.563 Million Owed



## Processors

Load Inspections: 3,089  
Claims Denied or Reduced: 51



## Dealers (Retailers)

Inspections: 2,431  
Notice of Noncompliance Issued: 808  
Notice of Violation Issued: 742



## Recycling Centers

Notice of Noncompliance Issued: 281  
Notice of Violation Issued: 186  
Investigations: 166  
Businesses Placed on Prepayment Controls: 23  
Probationary Reviews Completed: 575  
Handling Fee Reviewed: 17  
Handling Fee Denied: 6

## Legislative Bills Enacted in 2021



### AB 148

Adds 5 Pilot Projects and Extends Pilot Program Sunset to 6/30/26 (Committee on Budget, Chapter 115, Statutes of 2021)



### AB 962

Expands Program to Include Reusable Containers (Kamlager, Chapter 502, Statutes of 2021)

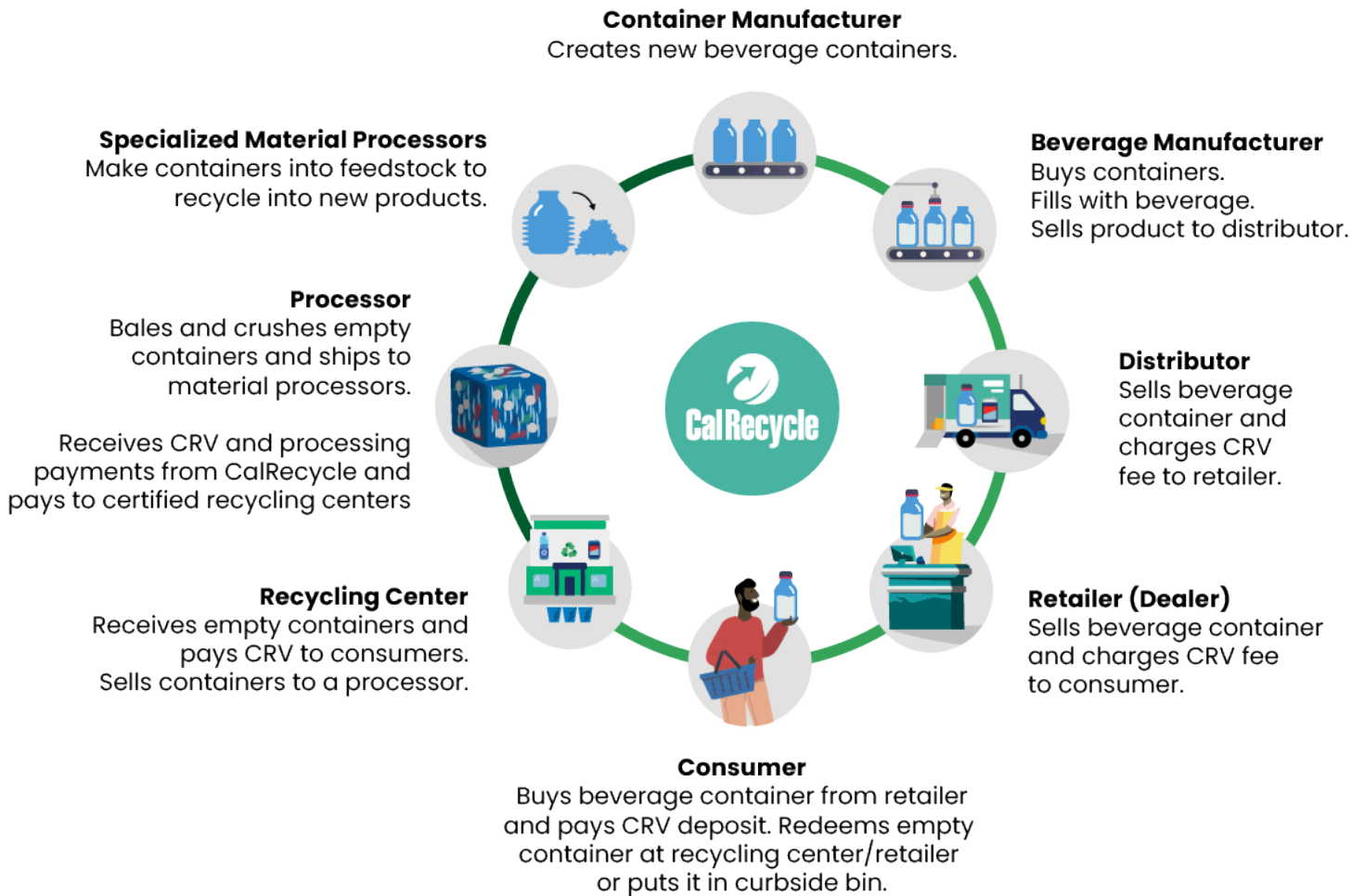


### AB 1311

Expands Program to Include Bag Drop Centers and Alternative Schedules (Wood, Chapter 506, Statutes of 2021)



# Overview of Beverage Container Recycling Program



## Flow of Consumer Funds through CRV Program

