



2022 Beverage Container Recycling in California

Beverage Container Recycling Rates

$$\left(\text{Beverage Container Recycling Rate} \right) = \left(\text{Number of Beverage Containers returned} \right) \div \left(\text{Number of Beverage Containers Sold in CA} \right)$$

The BCRP Recycling rate goal is 80%

70%
Recycling Rate

=



19.6 Billion

Bottles and Cans Returned

÷



27.8 Billion

Beverages Sold

Recycling Rates by Container Material Type



74%
Aluminum

Sales:
10.4 Billion
Returns:
7,715.52 Million



64%
Glass

Sales:
2.8 Billion
Returns:
1,810.78 Million



70%
#1 PET

Sales:
14.0 Billion
Returns:
9,866.10 Million



55%
#2 HDPE

Sales:
179.2 Million
Returns:
98.35 Million



4%
#3 PVC

Sales:
0.06 Million
Returns:
0.00 Million



3%
#4 LDPE

Sales:
6.99 Million
Returns:
0.21 Million



76%
#5 PP

Sales:
9.07 Million
Returns:
6.88 Million



20%
#6 PS

Sales:
226.83 Million
Returns:
44.84 Million



5%
#7 Other

Sales:
53.98 Million
Returns:
2.50 Million



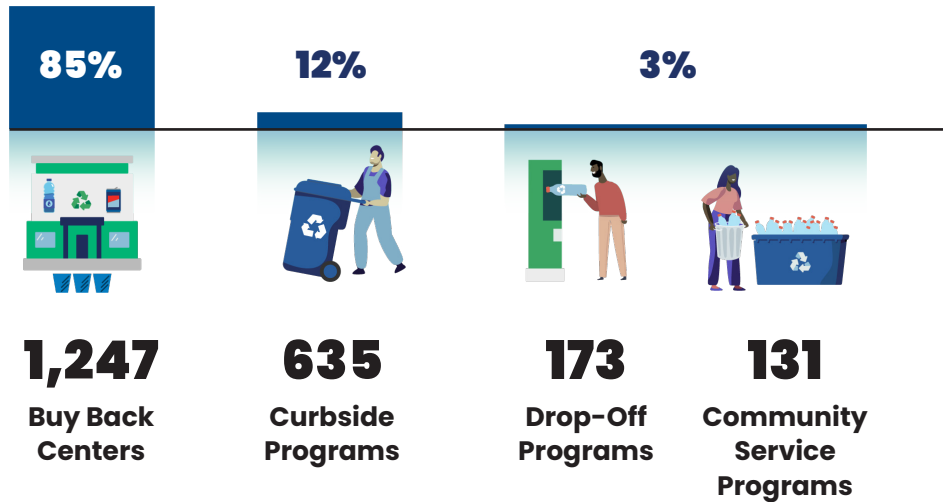
11%
Bimetal

Sales:
43.76 Million
Returns:
4.84 Million

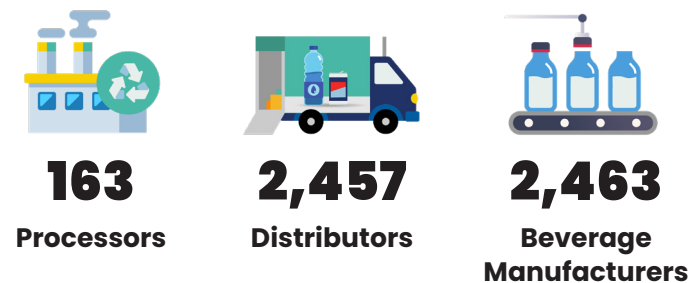


Program Participants

CRV Recycling Collection Distribution



Other Program Participants



Rates paid for Containers Per Pound at Recycling Centers

Recycling centers may issue the CRV refund by weight when consumers redeem more than 50 containers of a material type.

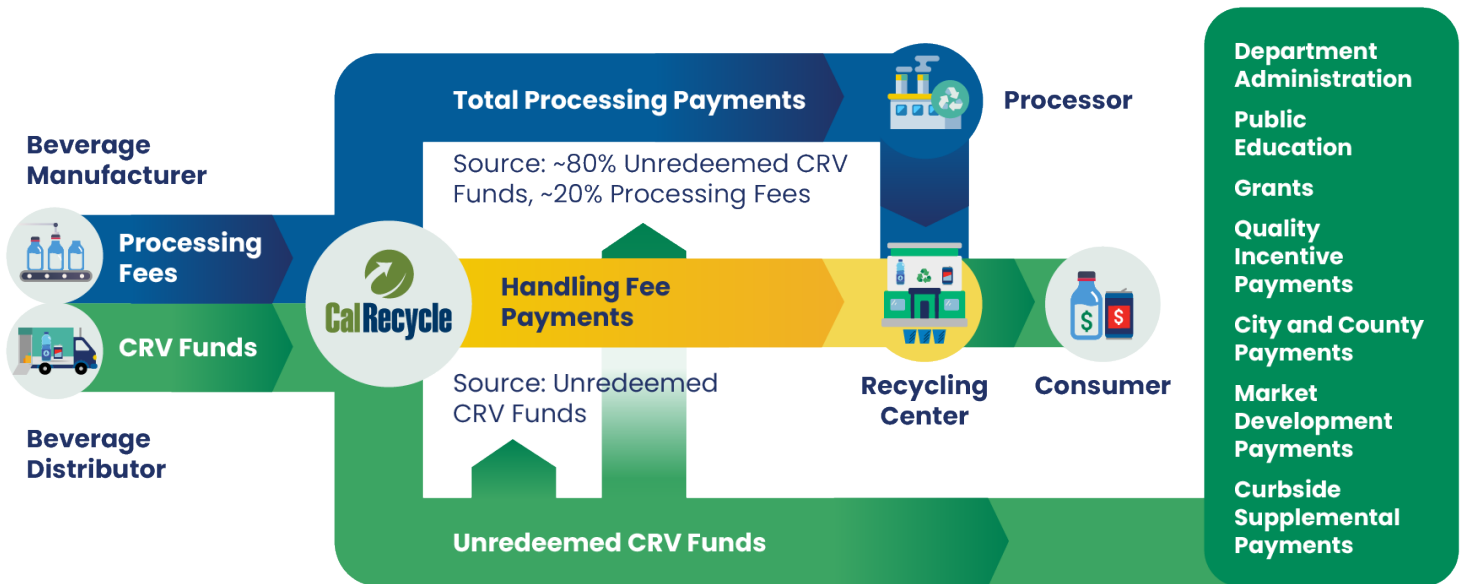
CalRecycle calculates the number of containers per pound to ensure refund value by weight equals the value by container (5 or 10 cents).

The per pound rate fluctuates with changes in the amount of material manufacturers use in each container.

Material Type	# of Containers per Pound	Refund Value per Pound
Aluminum	30.0	\$1.68
Glass	1.96	\$0.105
#1 PET	24.3	\$1.32
#2 HDPE	7.6	\$0.59
#3 PVC	9.7	\$0.48
#4 LDPE	40.8	\$2.04
#5 PP	10.9	\$0.55
#6 PS	100.2	\$5.01
#7 Other	3.1	\$0.31
Bimetal	8.0	\$0.40

Flow of Funds to Support Program Operation

Beverage Container Recycling Program funds pay to run the program, subsidize recycling businesses, and expand redemption and demand for recycled materials.



Processing Payments and Fees

Beverage manufacturers' processing fees help pay processors for the cost to recycle materials whose scrap value doesn't cover costs.

The processing payments CalRecycle makes to processors fluctuate with the market value of materials.

2022 Processing Payments to Businesses

\$139.8 M

How Processing Fees and Payments Are Calculated

(Jan. 1, 2023)

Processing payments and fees are paid for materials that cost more to recycle than scrap value is worth.

Processing payments equal the difference between scrap value per ton and cost per ton.

A formula in the law dictates processing fees.

Material Type	Scrap Value per Ton	Cost per Ton **	PP per Ton	PF per Container
Aluminum	\$1,745.61	\$643.83	N/A	N/A
Glass	\$-4.19	\$169.95	\$174.14	\$0.00452
#1 PET	\$469.93	\$554.80	\$84.87	\$0.00005
#2 HDPE	\$305.28	\$1,100.32	\$795.04	\$0.00762
#3 PVC	\$2.07	\$1,730.74	\$1,728.67	\$0.05792
#4 LDPE	\$1.46	\$2,469.06	\$2,467.60	\$0.01951
#5 PP	\$9.32	\$2,215.08	\$2,205.76	\$0.01021
#6 PS	\$6.19	\$1,372.05	\$1,365.86	\$0.00403
#7 Other	\$4.36	\$1,503.29	\$1,498.93	\$0.15715
Bimetal	\$3.64	\$1,386.97	\$1,383.33	\$0.05916

Processing Payments and Fees Calendar Year 2022 (Millions)

Recycling centers may issue the CRV refund by weight when consumers redeem more than 50 containers of a material type.

CalRecycle calculates the number of containers per pound to ensure refund value by weight equals the value by container (5 or 10 cents).

The per pound rate fluctuates with changes in the amount of material manufacturers use in each container.

Material Type	Processing Payments Paid	Processing Fees Paid
Glass	\$76.292	\$12.514
#1 PET	\$57.029	\$7.519
#2 HDPE	\$4.612	\$1.200
#3 PVC	\$0.000	\$0.001
#4 LDPE	\$0.006	\$0.335
#5 PP	\$0.648	\$1.203
#6 PS	\$0.263	\$1.202
#7 Other	\$0.564	\$2.613
Bimetal	\$0.406	\$3.549
Total	\$139.820	\$30.137

Source: Division of Recycling Integrated Information System

2022 Handling Fees

\$59.1 M

Handling Fees

CalRecycle pays handling fees to help supermarket, nonprofit, and rural recycling center businesses operate in high-cost locations, giving consumers convenient places to recycle bottles and cans.

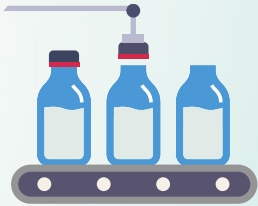
All Beverage Container Recycling Program Payments for 2022

CalRecycle makes different payments to expand redemption sites, educate communities and increase the amount of materials actually recycled into new products.

1,247 Recycling Centers	Processing Payments	\$98,377,000
	Administrative Fees	\$6,738,000
	Handling Fees	\$59,104,000
	Pilot Project Recycler Grants	\$2,550,000
635 Curbside Programs	Processing Payments	\$32,112,000
	Administrative Fees	\$970,000
	Curbside Supplemental Payments	\$15,000,000
304 Dropoff, Collection, and Community Service Programs	Processing Payments	\$6,791,000
163 Certified Processors	Administrative Fees	\$26,958,000
405 Local Governments	City and County Payments	\$9,620,000
14 Local Community Conservation Corps	Local Conservation Corps Grants	\$10,289,000
28 Glass Beneficiators	Quality Incentive Payments	\$7,622,000
24 Plastic Reclaimers and Plastic Product manufacturers	Plastic Market Development Payments	\$10,000,000
16 Competitive Grantees	Beverage Container Recycling Grants	\$1,473,000

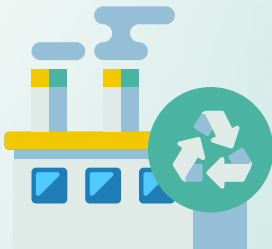


Enforcement Actions and Inspections During 2022



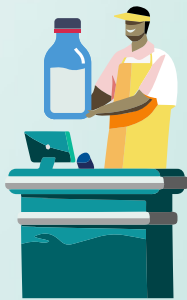
Beverage Container Manufacturers and Distributors

Compliance Audits Completed: **68**
Audit Findings: **\$9.064 Million Owed**



Processors

Load Inspections: **3,961**
Claims Denied or Reduced: **34**



Dealers (Retailers)

Inspections: **2,364**
Notice of Noncompliance Issued: **459**
Notice of Violation Issued: **844**



Recycling Centers

Notice of Noncompliance Issued: **334**
Notice of Violation Issued: **218**
Investigations: **125**
Businesses Placed on Prepayment Controls: **6**
Probationary Reviews Completed: **566**
Handling Fee Reviewed: **16**
Handling Fee Denied: **3**

Legislative Bills Enacted in 2022



AB 179

Appropriates funding to support beverage container recycling programs and creates new grants, loans, and payments. (Ting, Chapter 249, Budget Act of 2022)



AB 211

Amends the bag drop recycling center definition; requires CalRecycle to provide redemption locations on its website; adds a Quality Incentive Payment program for thermoform plastic containers; requires CalRecycle to provide a Budget Act of 2022 report to the Legislature. (Committee on Budget, Chapter 574, Statutes of 2022)



SB 895

Amends the criteria for eligibility for a nonprofit convenience zone recycler. (Laird, Chapter 262, Statutes of 2022)



AB 203

Adds an exemption from the minimum recycled content requirement for plastic beverage containers; sets the handling fee amount until June 30, 2024; sets the handling fee cost of living amount for the 2022/23 fiscal year. (Committee on Budget, Chapter 60, Statutes of 2022)



SB 38

Authorizes CalRecycle to study the issue of glass contamination and develop a process to improve the quality of glass material collected. (Wieckowski, Chapter 977, Statutes of 2022)

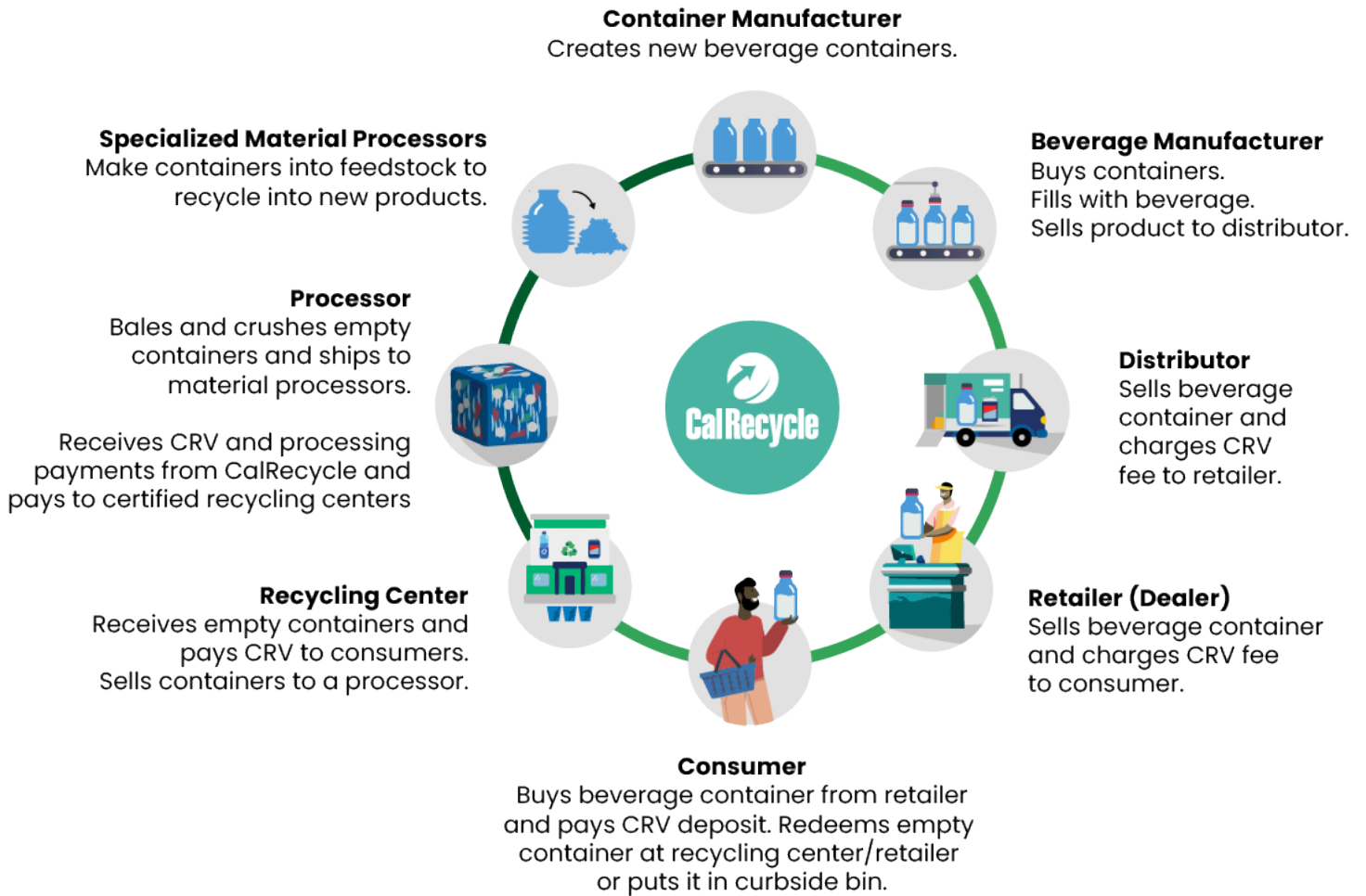


SB 1013

Expands the convenience zone area; authorizes new dealer cooperatives in unserved convenience zones; reduces the number of convenience zone exemptions allowed; adds new grant and payment programs with funding; adds wine and distilled spirit beverages to the CRV program; exempts wine and distilled spirits beverage manufacturers from labeling until 7/1/25; adds new container types for wine and distilled spirits; extends the plastic market development program; amends the criteria for glass quality incentive payments. (Atkins, Chapter 610, Statutes of 2022)



Overview of Beverage Container Recycling Program



Flow of Consumer Funds through CRV Program

