

Beverage Container Recycling *in California*



2023

Beverage Container Recycling Rates

$$\left\{ \begin{array}{l} \text{Number of Beverage Containers Returned in CA} \\ \div \\ \text{Number of Beverage Containers Sold in CA} \\ = \\ \text{Beverage Container Recycling Rate} \end{array} \right\}$$

**The Beverage Container Recycling Program (BCRP)
Recycling Rate Goal is 80%**

The 2023 BCRP Recycling Rate is 71%

$$\left\{ \begin{array}{l} \text{18.8 Billion Bottles and Cans Returned} \\ \div \\ \text{26.6 Billion Beverages sold} \\ = \\ \text{71\%} \end{array} \right\}$$



Collection Rates by Container Material Type



75%
Aluminum

Sales:
10.2 Billion

Returns:
7.6 Billion



63%
Glass

Sales:
2.7 Billion

Returns:
1.7 Billion



71%
#1 PET

Sales:
13.3 Billion

Returns:
9.4 Billion



56%
#2 HDPE

Sales:
166.93 Million

Returns:
92.83 Million



4%
#3 PVC

Sales:
122,394

Returns:
4,747



3%
#4 LDPE

Sales:
7.14 Million

Returns:
0.21 Million



29%
#5 PP

Sales:
9.98 Million

Returns:
2.93 Million



19%
#6 PS

Sales:
211 Million

Returns:
40.68 Million



5%
#7 Other

Sales:
42.78 Million

Returns:
2.25 Million



11%
Bimetal

Sales:
43.21 Million

Returns:
4.96 Million

Program Participants

CRV Recycling Collection Distribution



16.26 Billion
Containers Collected



2.31 Billion
Containers Collected



0.23 Billion Containers Collected

1,217

**Buy Back
Centers**

Primarily Privately
Owned Businesses

621

**Curbside
Programs**

171

**Drop-Off
Programs**

125

**Community
Service
Programs**

Other Program Participants



163

Processors



4,194

Distributors



4,232

**Beverage
Manufacturers**

Program Participant Payments for 2023

	Consumer	Recycling Centers	Curbside Programs	Community Service/ Neighborhood Dropoff Programs
Total Containers	N/A	16,262,645,926	2,310,888,128	230,618,301
Refund Value	\$890,755,038	Refund Value passes through recycling centers as it goes to consumers.	\$131,432,329.17	\$33,016,365.79
Handling Fee	N/A	\$68,302,493	N/A	N/A
Curbside Supplemental	N/A	N/A	\$15,000,000	N/A
Processing Payment	N/A	\$91,200,219	\$30,568,999	\$6,467,325
Administrative Fees	N/A	\$6,545,119	\$959,422	N/A

Participant Shares for 2023

Percentage of CRV paid out by each certified recycling program. Percentage of each material type redeemed through each certified recycling program.

Certified Recycling Programs

	Recycling Centers	Curbside Programs	Community Service/ Neighborhood Dropoff Programs
CRV Paid Out	85%	12%	3%
Aluminum	86%	11%	3%
Glass	63%	31%	6%
PET	83%	14%	3%
HDPE	57%	36%	7%

Grants and Other Payments for 2023

CalRecycle makes different payments to expand redemption sites, educate communities and increase the amount of materials actually recycled into new products.

163 Certified Processors	Administrative Fees	\$26,016,043
7 Competitive Grantees	Beverage Container Recycling Grants	\$1,500,000
6 Grantees	Pilot Project Recycler Grants	\$3,500,000
395 Local Governments	City and County Payments	\$9,564,504
14 Local Community Conservation Corps	Local Conservation Corps Grants	\$12,769,208
28 Quality Incentive Payment Participants	Glass Quality Incentive Payments	\$5,379,450
4 Glass Beverage Container Manufacturers	Glass Market Development Payments	\$4,226,695
27 Plastic Reclaimers and Plastic Product Manufacturers	Plastic Market Development Payments	\$10,000,000

Rates Paid for Containers Per Pound at Recycling Centers

(Effective Jan. 1, 2024)

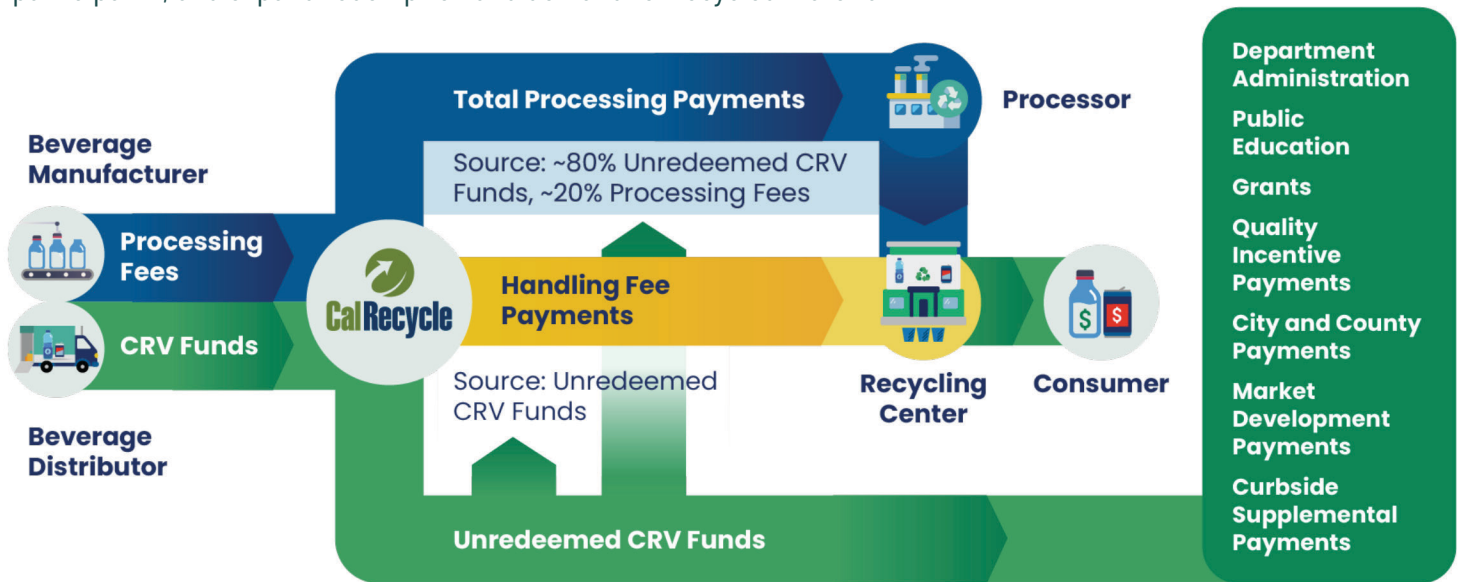
Recycling centers may issue CRV refunds by weight if customers do not request payment by count.

CalRecycle calculates the average number of containers per pound by conducting recycling center surveys.

Material Type	# of Containers per Pound	Refund Value per Pound
Aluminum	30.0	\$1.68
Glass	1.96	\$0.105
#1 PET	24.3	\$1.32
#2 HDPE	7.6	\$0.59
#3 PVC	9.7	\$0.48
#4 LDPE	40.8	\$2.04
#5 PP	10.9	\$0.55
#6 PS	100.2	\$5.01
#7 Other	3.1	\$0.31
Bimetal	8.0	\$0.40
WDS-BBP	3.1	\$0.31

Flow of Funds to Support Program Operation

Beverage Container Recycling Program funds pay to run the program, subsidize recycling participants, and expand redemption and demand for recycled materials.



Processing Payments and Fees

Beverage manufacturers' processing fees help pay processors for the cost to recycle materials whose scrap value doesn't cover costs.

The processing payments CalRecycle makes to processors fluctuate with the market value of materials.

2023 Processing Payments to Businesses:

\$128.6 MILLION

How Processing Fees and Payments Are Calculated

The formulas for determining the calculation of processing fees and payments are set by statute.

Processing payments equal the difference between the scrap values offered to recyclers and the sum of the actual costs of recycling for certified recycling centers, excluding centers receiving handling fees, plus a reasonable financial return. Processing fees equal the processing payments converted into pounds then reduced based on the recyclability of the material type.

(Jan. 1, 2024)

Material Type	Scrap Value per Ton	Cost per Ton	PP per Ton	PF per Container
Aluminum	\$1,257.31	\$760.92	N/A	N/A
Glass	-\$1.39	\$211.08	\$212.47	\$0.00576
#1 PET	\$144.31	\$696.33	\$552.02	\$0.00110
#2 HDPE	\$248.74	\$1,005.74	\$757.00	\$0.00697
#3 PVC	\$0.00	\$1,581.90	\$1,581.90	\$0.05300
#4 LDPE	\$4.23	\$2,256.72	\$2,252.49	\$0.01794
#5 PP	\$28.46	\$2,024.58	\$1,996.12	\$0.05952
#6 PS	\$2.90	\$1,254.06	\$1,251.16	\$0.00406
#7 Other	\$3.49	\$1,374.01	\$1,370.52	\$0.14368
Bimetal	\$15.33	\$1,267.68	\$1,252.35	\$0.05088

Processing Payments Paid and Fees Collected in Calendar Year 2023 (Millions)

Material Type	Processing Payments Paid	Processing Fees Collected
Glass	\$74.329	\$12.143
#1 PET	\$46.813	\$0.849
#2 HDPE	\$5.883	\$1.500
#3 PVC	\$0.000	\$0.009
#4 LDPE	\$0.006	\$0.209
#5 PP	\$0.298	\$0.222
#6 PS	\$0.266	\$1.214
#7 Other	\$0.547	\$2.678
Bimetal	\$0.440	\$4.162
Total	\$128.583	\$22.987

Handling Fees

CalRecycle pays handling fees to help supermarket, nonprofit, and rural recycling center businesses operate in high-cost locations, giving consumers convenient places to recycle containers.

2023 Handling Fees:

\$68.3 MILLION

.....



Enforcement Actions and Inspections During 2023



Beverage Container Manufacturers and Distributors

Compliance Audits Completed: **55**
Audit Findings: **\$2,397,774**

Processors

Load Inspections: **1,687**
Claims Denied or Reduced: **16**

Dealers (Retailers)

Inspections: **1,978**
Notice of Noncompliance Issued: **546**
Notice of Violation Issued: **608**

Recycling Centers

Inspections Conducted: **903**
Notice of Noncompliance Issued: **242**
Notice of Violation Issued: **162**
Investigations: **300**
Businesses Placed on Prepayment Controls: **48**
Probationary Reviews Completed: **356**
Handling Fee Reviewed: **43**
Handling Fee Denied: **1**

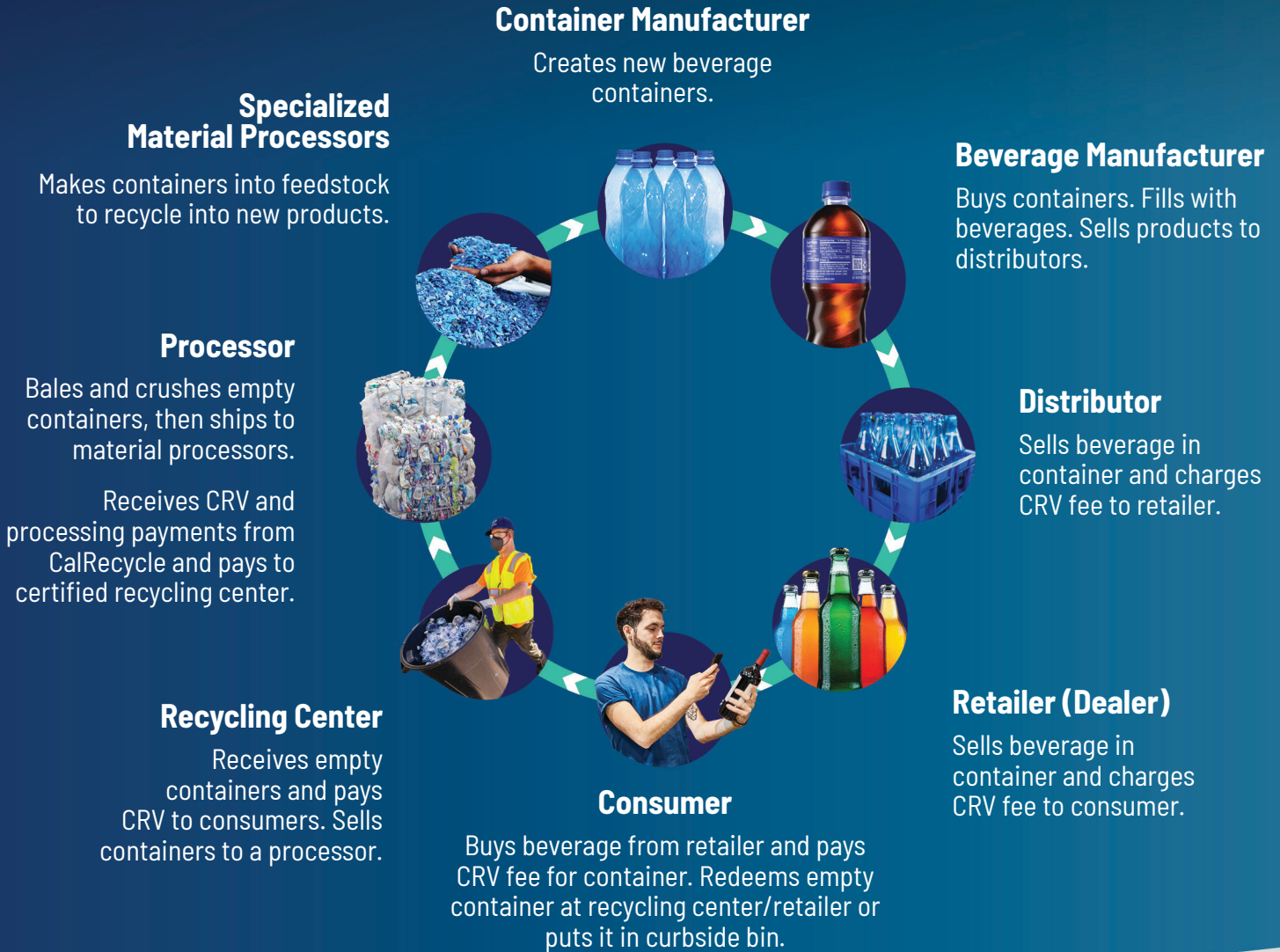
Legislative Bills Enacted in 2023

SB 353

(Dodd, Chapter 868, Statutes of 2023)

- Adds fruit juices that are 46 ounces or more in volume.
- Adds vegetable juices that are over 16 ounces in volume.
- Amends the definition of beverage manufacturers to include beer, wine, or distilled spirits.
- Amends the definition of a dealer.
- Delays plastic minimum content applicability until January 1, 2026 for fruit and vegetable juices added by this bill.
- Requires posting the Semi-Annual report to the Legislature on CalRecycle's website.
- Exempts distributors of wine, beer, or distilled spirits consumed in tasting rooms from CRV redemption payments.
- Delays CRV labeling until July 1, 2025 for all beverage containers added on January 1, 2024.
- Authorizes a transportation, operations, and logistics payment for rural region recyclers until January 1, 2030.
- Amends the basis for processing payment adjustments.
- Sets the processing payment rate for wine and distilled spirit boxes, bladders, and pouches until January 1, 2026.

Overview of Beverage Container Recycling Program



Flow of Consumer Funds through CRV Program

